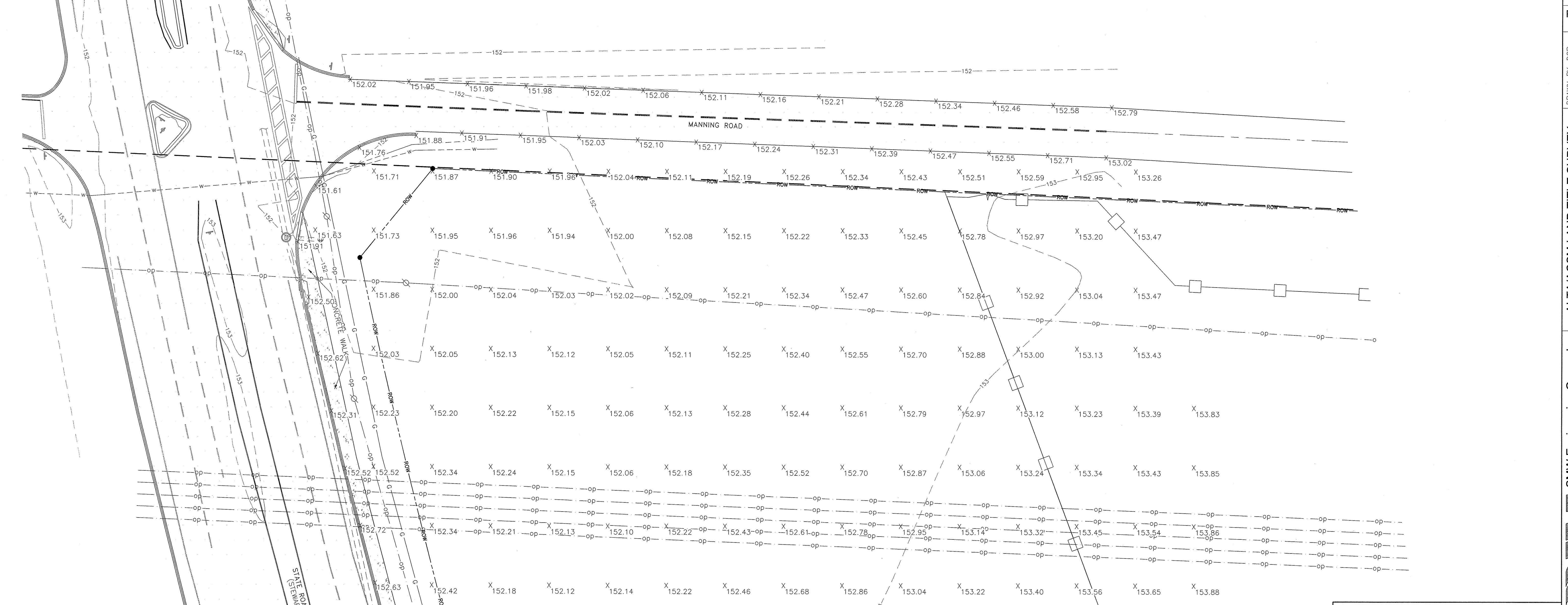
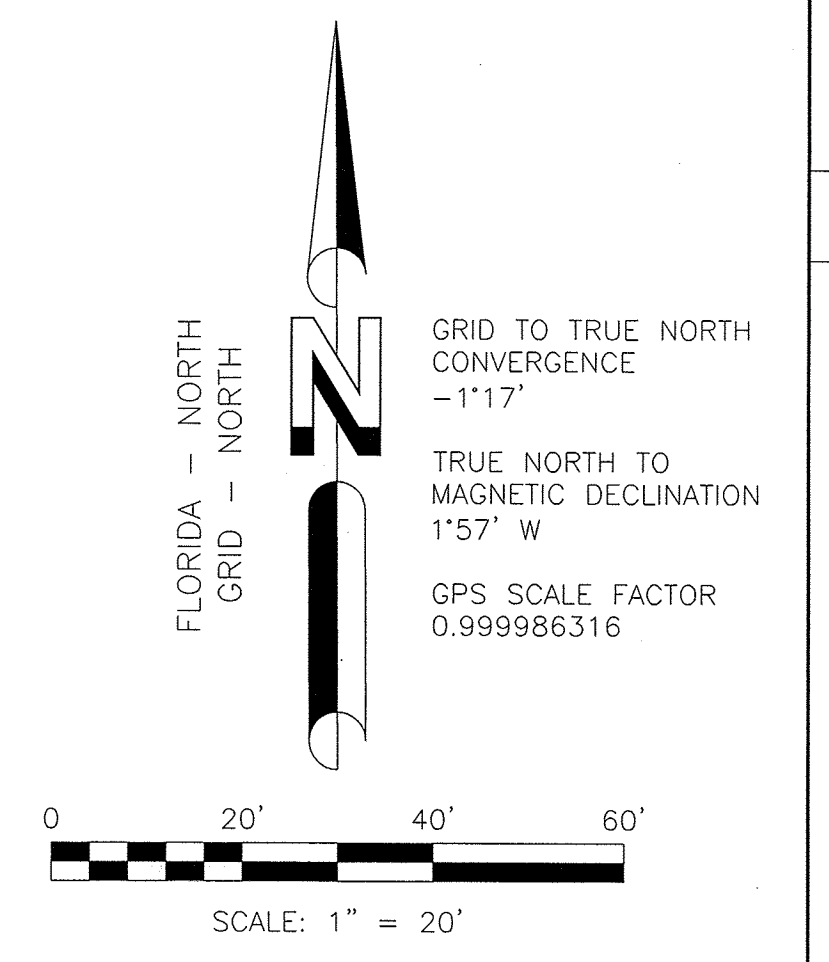


LEGEND	
☐ = POWER BOX	○ = OAK TREE
⊕ = TELEPHONE PEDESTAL	⊖ = PINE TREE
⊙ = WATER VALVE	⊕ = WATER METER
⊛ = LIGHT POLE	⊙ = SIGN
⊚ = POWER POLE	⊚ = TRAFFIC SIGNAL POLE
⊙ = GUY ANCHOR	⊙ = FIRE HYDRANT
⊙ = STORM SEWER MANHOLE	⊙ = TELEPHONE MANHOLE
⊙ = GRATE INLET	⊙ = SIGNAL BOX
⊙ = UNDERGROUND ELECTRIC BOX	⊙ = SETBACK
— = STORM SEWER LINE	— = 3" H.P. UNDERGROUND GAS LINE
— = RIGHT-OF-WAY	— = UNDERGROUND WATER LINE
— = OVERHEAD POWER	— = 6" WOOD FENCE WITH HOGWIRE
— = UNDERGROUND FIBER OPTIC CABLE	

○ = 5/8" CAPPED REBAR SET (SMW LS 0006141)  
 ● = FOUND 5/8" CAPPED REBAR (BENCHMARK, LB5170) UNLESS OTHERWISE NOTED  
 ■ = FOUND CONCRETE MONUMENT  
 ⊕ = TEMPORARY BENCH MARK  
 POB = POINT OF BEGINNING  
 POC = POINT OF COMMENCEMENT  
 (R) = RECORDED INFORMATION  
 (M) = MEASURED INFORMATION

**SITE ADDRESS**  
 6384 HWY 87 N  
 MILTON, FL 32583



NO.	REVISION	DATE	BY
1	MANNING RD ROW	05/22/09	DCP
2	WATER & FOC LINES	05/28/09	DCP
3	FAMILY DOLLAR UPDATE	12/23/09	DCP
4	COMMENTS FROM CLIENT	01/14/10	AAK

**MILTON, FL**

PROJECT NO. 09-0109

DRAWN BY: DCP  
 CHECKED BY: AAK  
 FIELD CREW: CS  
 APPROVED BY: WHS  
 DATE: 03/24/09  
 SCALE: 1" = 20'  
 SHEET 6 OF 7

**ALTA/ACSM LAND TITLE SURVEY**  
**FOR:**  
**FORESITE GROUP, INC**  
 5185 PEACHTREE PARKWAY, SUITE 240  
 NORCROSS, GA 30092

**SMW Engineering Group, Inc.**  
 1550 Woods of Riverchase Drive  
 Suite 100  
 Hoover, Alabama 35244  
 Ph: 205-252-6985  
 www.smweng.com

**MILTON, FL**  
**PROJECT# 163.017**  
**SE 1/4, SEC. 21, T-2-N, R-28-W**  
**SANTA ROSA COUNTY, FLORIDA**

