

C.L. Helt, Architect Inc.

1136 Greenwood Cliff
Charlotte, NC 28204

Ph. 704-342-1686
Fx. 704-343-0054
E-MAIL CHELTHLT @ CLHELT.COM

ARCHITECT'S PROJECT • 09127

Project #
FAMILY DOLLAR
FOR
BOOS DEVELOPMENT GROUP, INC
STATE ROUTE 89
MILTON, FLORIDA
DESIGN BASED ON 2009-04 FD PROTOTYPE

Sheet Description #
WALL SECTIONS AND DETAILS

THIS DRAWING AND ITS COPIES ARE THE COPYRIGHT OF THE ARCHITECT. THEY MAY NOT BE USED FOR PROJECTS OTHER THAN THE DESIGNATED PROJECT WITHOUT THE SPECIFIC WRITTEN APPROVAL OF C. L. HELT ARCHITECT INC. AND OR CHESTER LEROY HELT, ARCHITECT

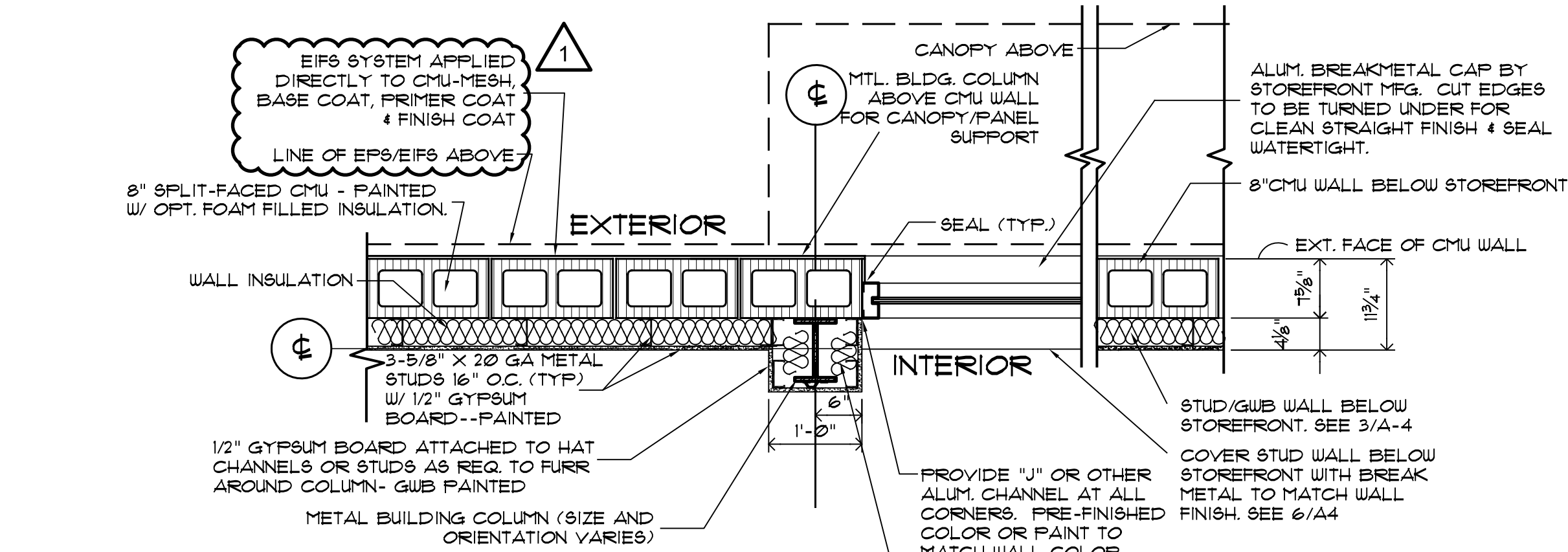
Drawn By :
D. MYERS

Checked By :
D. MYERS

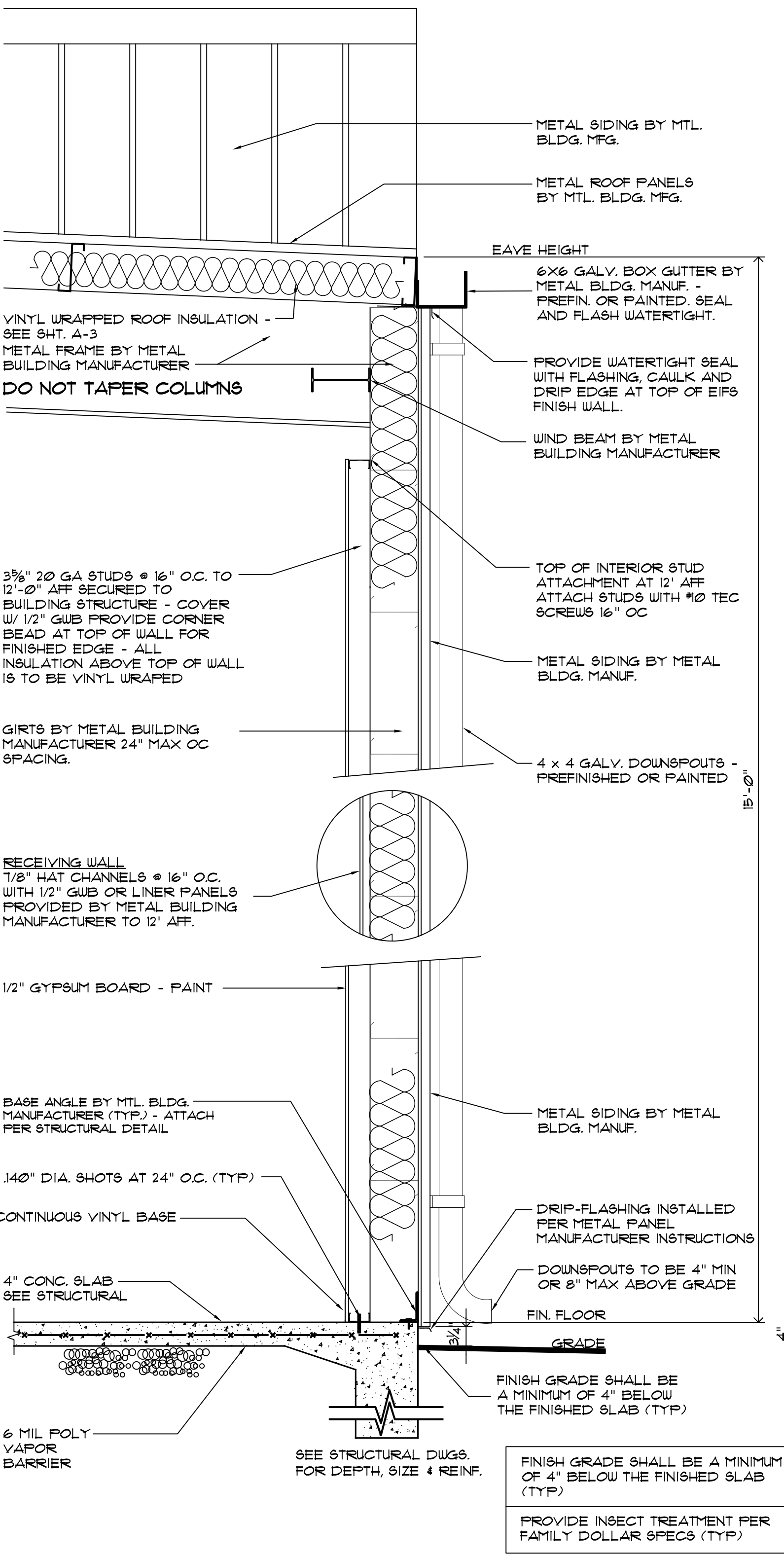
Revisions :	
2.5.10	① Added EIFS
②	
③	
④	

Seal
Date :
12/22/09

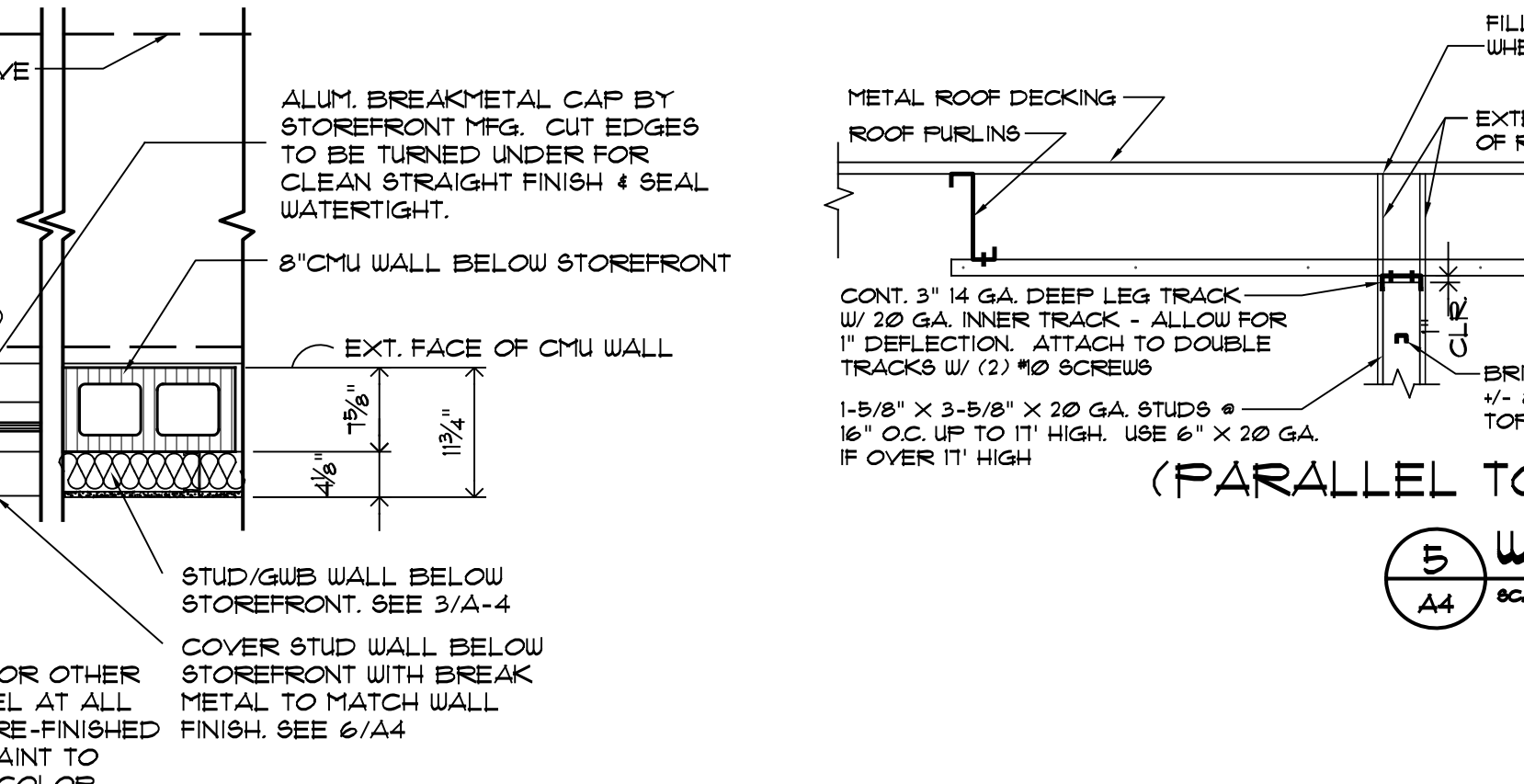
Sheet No.
A-4
of : 6



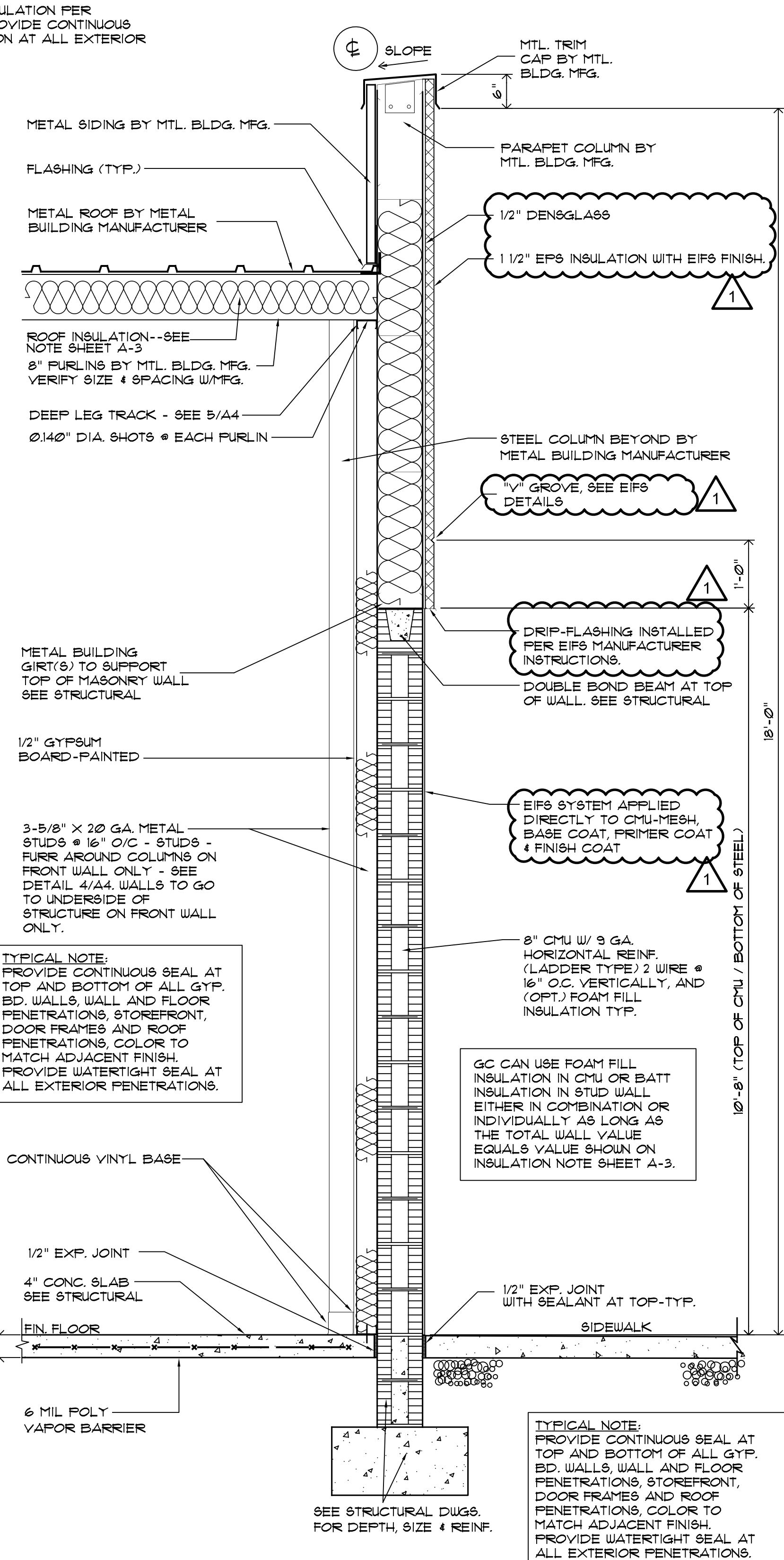
4 PLAN SECTION
SCALE = 3/4" = 1'-0"



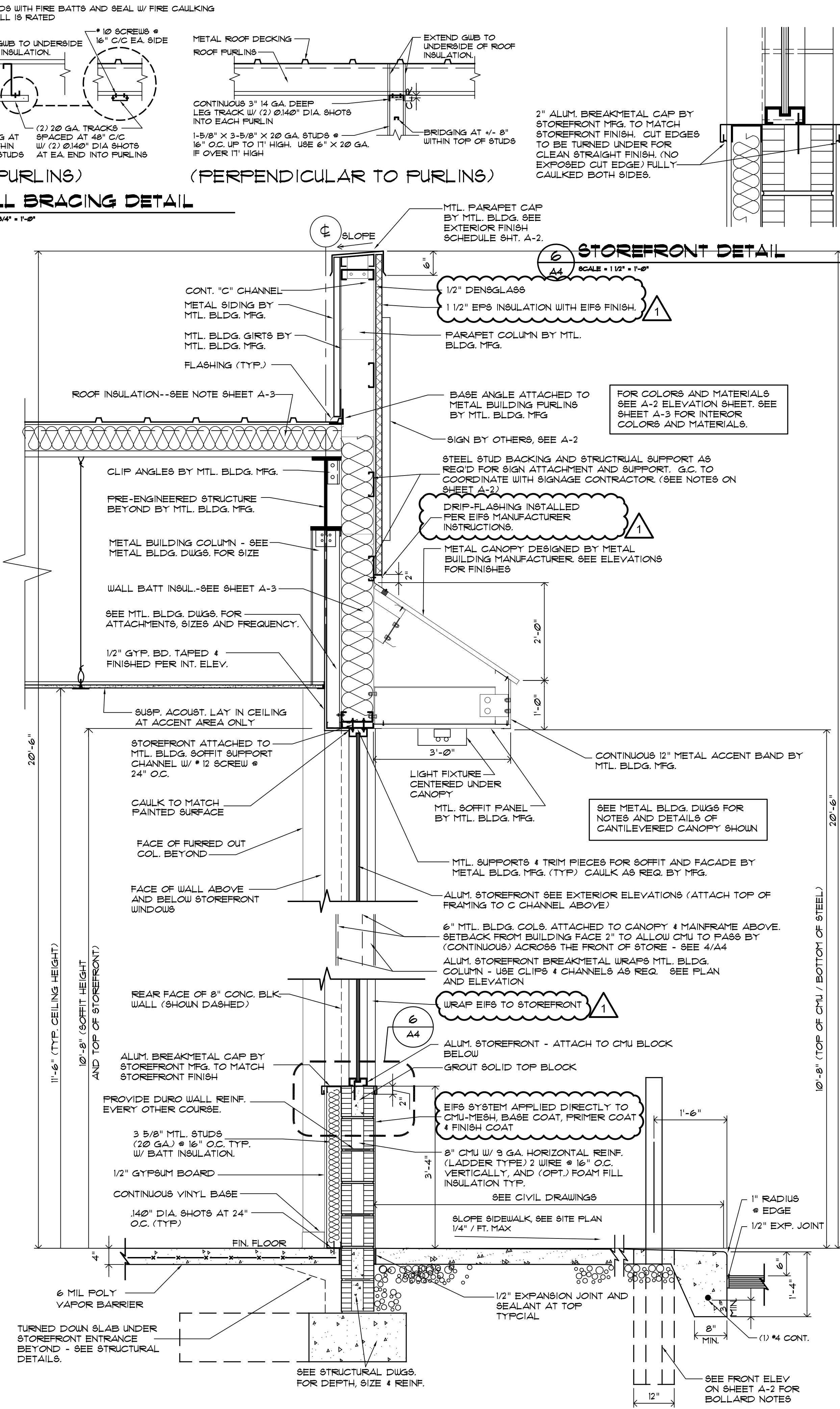
1 WALL SECTION AT GUTTER
SCALE = 3/4" = 1'-0"



5 WALL BRACING DETAIL
SCALE = 3/4" = 1'-0"



2 WALL SECTION AT PILASTER
SCALE = 3/4" = 1'-0"



3 WALL SECTION AT STOREFRONT
SCALE = 3/4" = 1'-0"