

C.L. Helt, Architect Inc.

1136 Greenwood Cliff  
Charlotte, NC 28204

Ph. 704-342-1686  
Fx. 704-343-0054  
E-MAIL CHETHELT @ CLHEL.COM

ARCHITECT'S PROJECT # 09177

Project:  
**FAMILY DOLLAR**  
FOR  
**BOOS DEVELOPMENT GROUP, INC**  
STATE ROUTE 89  
MILTON, FLORIDA  
DESIGN BASED ON 2009-04 FD PROTOTYPE

Sheet Description:  
**SECURITY**  
**EQUIPMENT**  
**PLAN**  
SCALE 1/8" = 1'-0"

THIS DRAWING AND ITS COPIES ARE THE COPYRIGHT OF THE ARCHITECT. THEY MAY NOT BE USED FOR PROJECTS OTHER THAN THE DESIGNATED PROJECT WITHOUT THE SPECIFIC WRITTEN APPROVAL OF C. L. HELT ARCHITECT INC. AND OR CHESTER LEROY HELT, ARCHITECT

Drawn By :

D. MYERS

Checked By :

D. MYERS

Revisions :

1
2
3
4

Seal

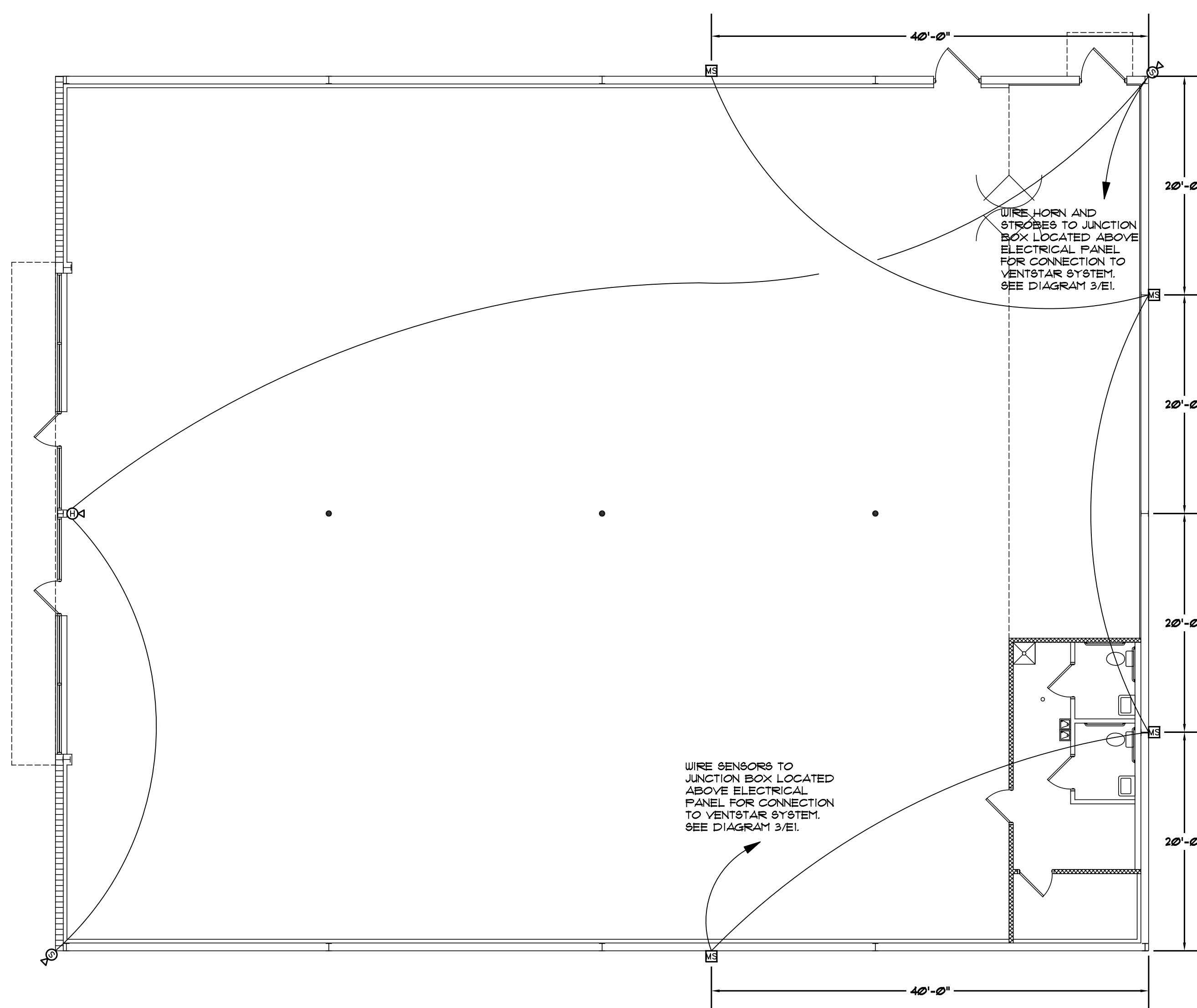
Date :

12/22/09

Sheet No.

SE-1

of 1



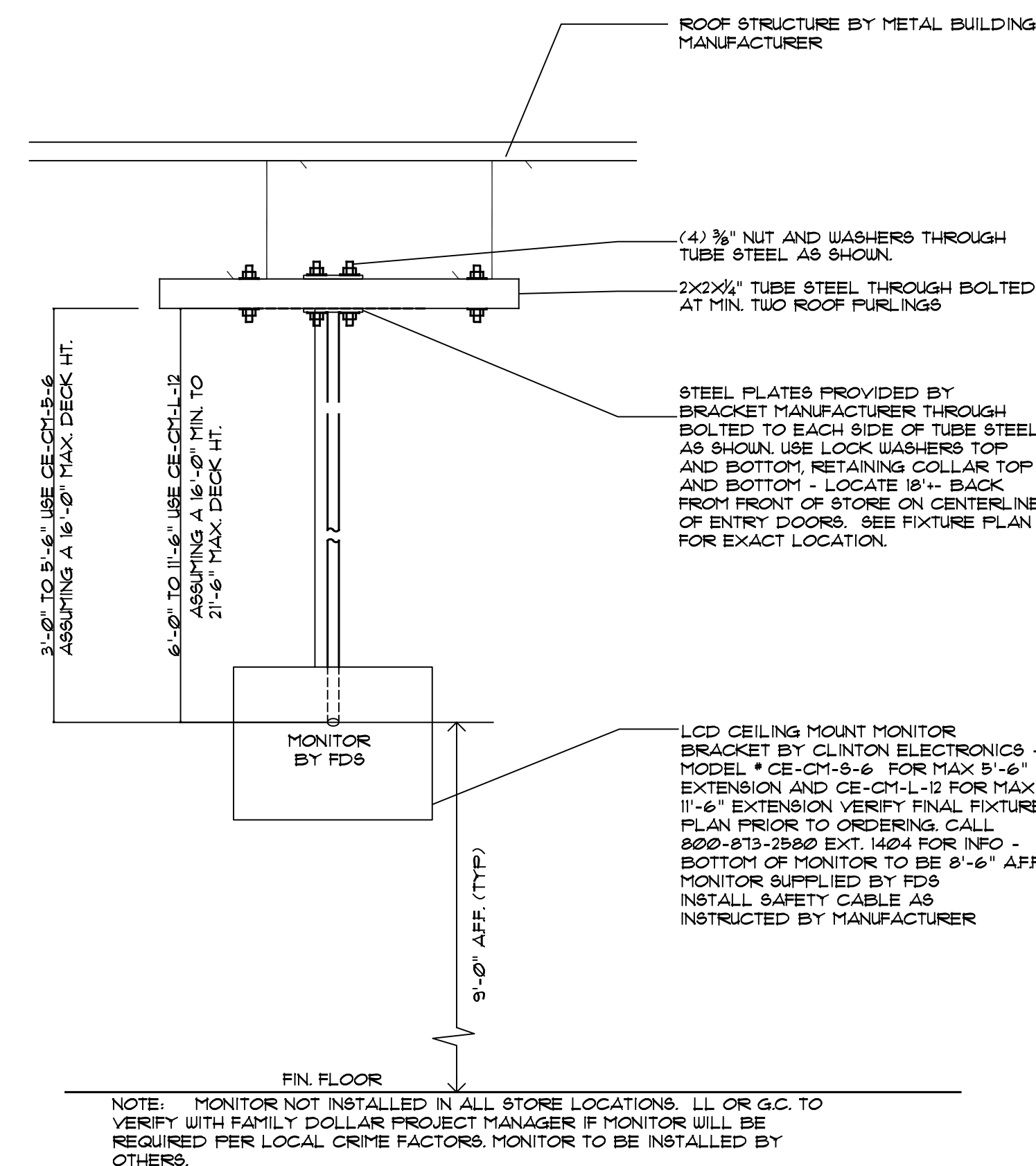
1 OUTDOOR SECURITY FLOOR PLAN  
SE-1 SCALE: 1/8" = 1'-0"

EXTERIOR MOTION SENSOR SYSTEM SYMBOL LEGEND

	SECURITY HORN MOUNTED ON ROOF ON BACKSIDE OF PARAFET. FEDERAL SIGNAL MODEL 302GC-120.
	SECURITY STROBE LIGHT (CLEAR) MOUNTED ON FASCIA AT CORNER OF BUILDING BELOW PARAFET CAP. FEDERAL SIGNAL MODEL 191-ST-120C. PROVIDE WITH MODEL LUMB2 (WALL MOUNT BRACKET) OR LCM2 (CORNER MOUNT BRACKET).
	MOTION SENSOR MOUNTED BELOW GUTTER AND NO CLOSER THAN 4 FEET TO DOWNSPOUT. PROVIDE RAB LIGHTING MODEL 5TL200W (120V).

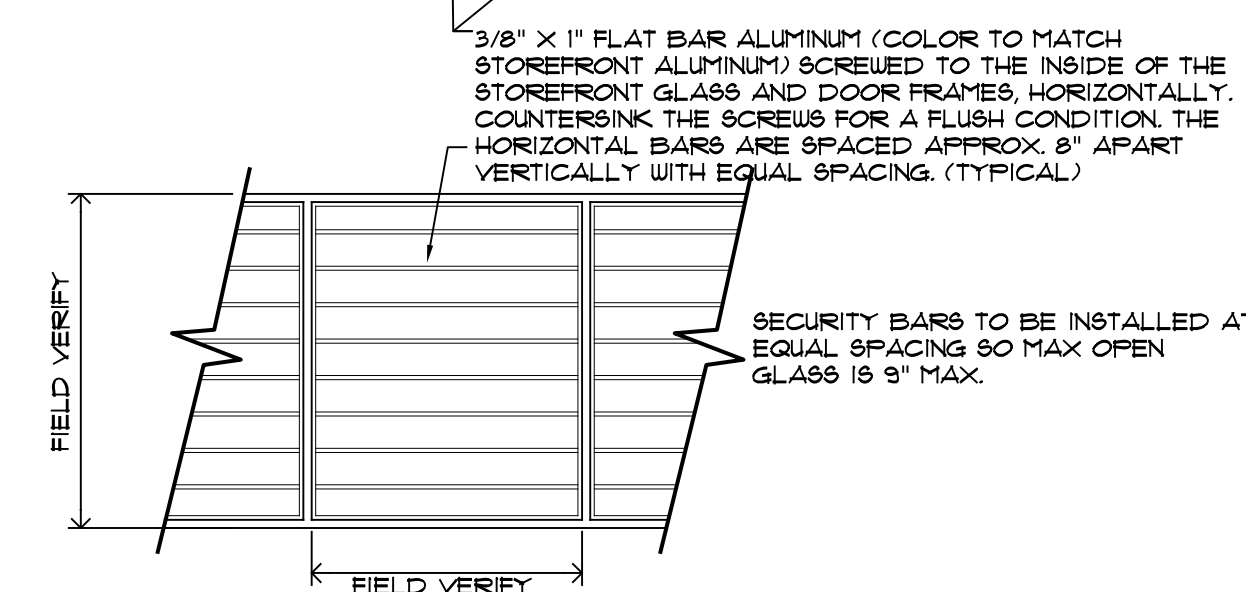
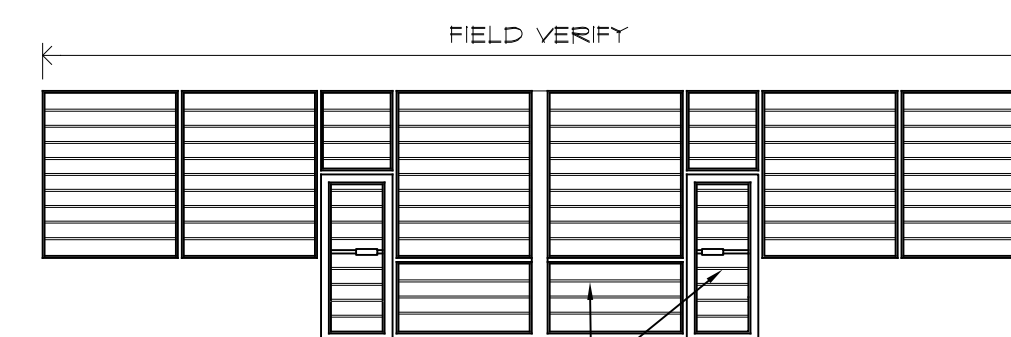
EXTERIOR MOTION SENSOR SYSTEM NOTES:

- ELECTRICAL CONTRACTOR SHALL PURCHASE COMPONENTS OF EXTERIOR MOTION SENSOR SYSTEM THROUGH A NATIONAL ACCOUNT PROGRAM. ELECTRICAL CONTRACTOR SHALL CONTACT CHRIS STUDDY WITH EDI (ELECTRICAL DISTRIBUTORS, INC.) # 104-312-3040 FOR INFORMATION REGARDING THIS PROGRAM.
- ELECTRICAL CONTRACTOR SHALL WIRE ALL COMPONENTS OF EXTERIOR MOTION SENSOR SYSTEM ACCORDING TO THE MANUFACTURER'S INSTALLATION INSTRUCTIONS. SEE DETAIL 3, EXTERIOR MOTION SENSOR SYSTEM DETAIL, ON SHEET EI.
- ALL MOTION SENSORS SHALL BE WIRED IN SERIES.



NOTE: MONITOR NOT INSTALLED IN ALL STORE LOCATIONS. LL OR G.C. TO VERIFY WITH FAMILY DOLLAR PROJECT MANAGER IF MONITOR WILL BE REQUIRED PER LOCAL CRIME FACTORS. MONITOR TO BE INSTALLED BY OTHERS.

2 MONITOR DETAILS  
SE-1 1/2" = 1'-0"



NOTE: SECURITY BARS NOT INSTALLED IN ALL STORE LOCATIONS. LL OR G.C. TO VERIFY WITH FAMILY DOLLAR PROJECT MANAGER IF SECURITY BARS WILL BE REQUIRED PER LOCAL RISK FACTORS. IF BARS ARE NOT ALLOWED BY COKE ROLL DOWN GATES ARE REQUIRED.

NOTE: FAMILY DOLLAR MAY REQUIRE ROLL-DOWN GATES IN LIEU OF SECURITY BARS AT DOORS AND WINDOWS. CONFIRM WITH TENANT CONSTRUCTION REPRESENTATIVE IN ADVANCE IF ROLL-DOWN GATES ARE A REQUIREMENT FOR THIS LOCATION SO SPECIFICATIONS CAN BE PROVIDED AND THE DESIGN MODIFIED UP FRONT IF REQUIRED TO ALLOW FOR ROLL-DOWN GATES.

3 SECURITY BARS  
SE-1 1/8" = 1'-0"