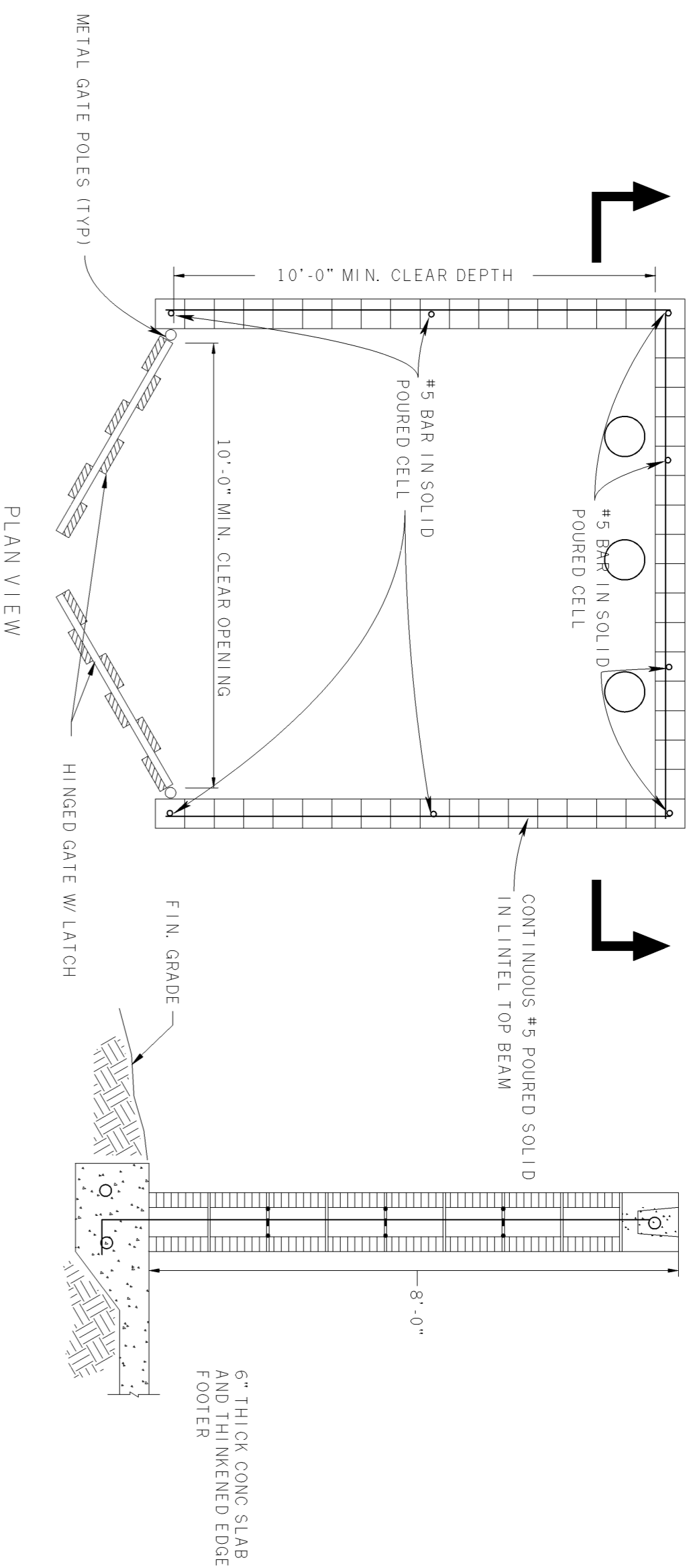
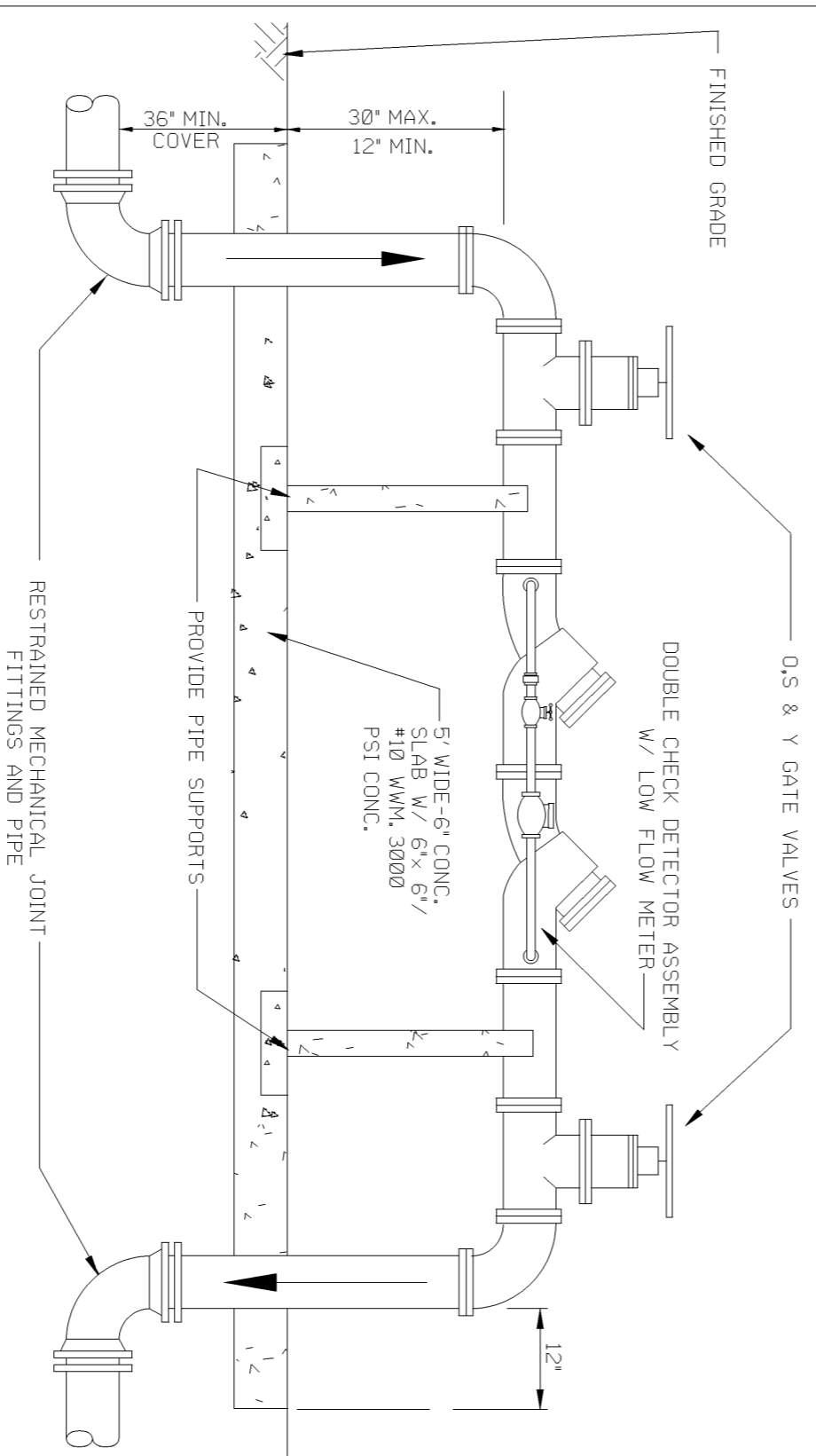


DUMPFSTER TEXTURE TO MATCH BUILDING
COLOR AND TEXTURE



SOLID WASTE CONTAINER DETAIL



- NOTES: 1. ALL PIPE & FITTINGS ABOVE GRADE SHALL BE FLANGED
2. ALL PIPING, FITTINGS AND SUPPORTS TO BE PAINTED, COLOR TO
3. DOUBLE CHECK DETECTOR ASSEMBLY SHALL HAVE A FUSED EPOXY
4. ASSEMBLY SHALL BE EQUIPPED WITH A LOW FLOW METERING DEVICE
TO DETECTED LEAKS.

DOUBLE CHECK DETECTOR ASSEMBLY

VOL. UTIL. STD.

(FIG. 2310)

Electronic Disks for Gravity Mains
Electronic disks shall be provided at one foot from the termination of all sanitary sewer service laterals. Disks shall be Scotchmark model 1253, Electronic Full-Range Marker manufactured by 3M.

Electronic Disks for Sewer Force Mains
Electronic disks shall be provided at fittings, valves, crosses, tees, changes in direction and every 100-ft on straight sections of pipe. Disks shall also be provided at the termination of sewer services. Electronic disks shall be Scotchmark model 1253, Electronic Full-Range Marker manufactured by 3M.

Electronic Disks for Potable Water Mains
Electronic disks shall be provided at fittings, valves, crosses, tees, changes in direction and every 100-ft on straight sections of pipe. Disks shall also be provided at the termination of water services. Disks shall be Scotchmark model 1252, Electronic Full-Range Marker manufactured by 3M.

Electronic Disks for Reclaimed Water Mains
Electronic disks shall be at fittings, valves, crosses, tees, changes in direction and every 100-ft on straight sections of pipe. Disks shall also be provided at the termination of water services. Disks shall be Scotchmark model 1253, Electronic Full-Range Marker manufactured by 3M.

VOL. UTIL. STD.

VIDEO INSPECTION REPORTS

UTILITY RECORD DRAWING REQUIREMENTS

1. Record drawings shall be provided to Volusia County Utilities by the engineer of record with the data provided by a Florida licensed surveyor. Record drawing information relative to all constructed utilities and structures shall include, but not be limited to, the following items:
 - a. Drawings shall depict actual location of all underground and above ground water, wastewater, and reclaimed water improvements and related appurtenances.
 - b. Drawings shall clearly depict all details not on the original contract drawings but which are necessary for the proper installation of all equipment and piping relocation shall be accurately depicted to scale.
 - c. The location of existing utilities where crossed or unworked during the course of the work shall be depicted.
 - d. Dimensions between all manholes shall be field verified and depicted. The inverts and grade elevations of all lines entering and leaving manholes shall be depicted. Sewer laterals shall be accurately located and depicted.
 - e. The depth from finish grade to the top of potable water mains, reclaimed water mains and sewer force mains shall be indicated at all valve and fitting locations.
 - f. The record drawings shall consist of all sheets included in the construction plans.
2. The record drawings shall be submitted in the following format:
 - a. Five (5) sets of signed and sealed blue-line prints
 - b. One (1) CD or DVD provided in AutoCAD 2004 (or later version) dwg format and in Adobe PDF format. This data will be referenced by a minimum of three (3) coordinates in the Florida State Plane Coordinate System, East Zone in US Survey Feet. The horizontal datum is NAD83(1990) HARN and the vertical datum is NAVD 88 Feet, in accordance with Florida Statutes, Chapter 177.151.

REVISIONS:

SHEET TITLE:
DETAILS

ENGINEERED PERMITS, INC.
220 SOUTH WOODLAND BOULEVARD
SUITE D
DELAND, FL 32720
PHONE: 386-734-0830
CERT NO. 26298



MICHAEL WOLUTUNIAK, P.E.
P.E. NO. 60934
220 SOUTH WOODLAND BOULEVARD
SUITE D
DELAND, FL 32720
PHONE: 386-734-0830
EMAIL: mwoluniak@epieng.net

PROJECT:
GATEWAY CENTER
FOR THE ARTS

DRAWN BY:
EPI

DATE:
1/31/2008

SCALE:
N/A

FILE NAME:
DETAILS89.DGN

PROJECT NO.:
07-629

SHEET NO.:
6 OF 11