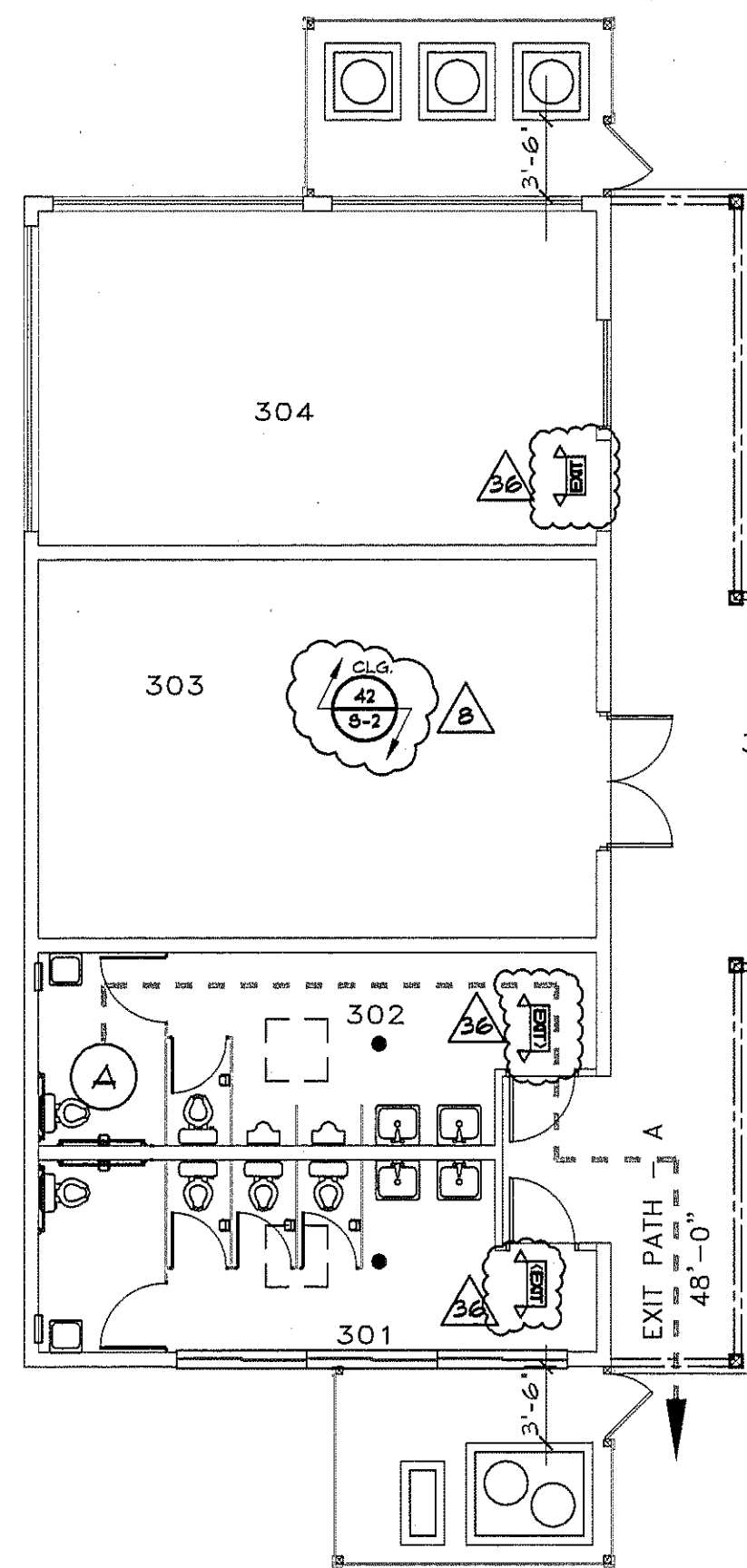


NOTE:
SPRINKLER CONTRACTOR TO PROVIDE
SHOP DRAWINGS TO BUILDER, ARCHITECT,
AND BUILDING OFFICIAL PRIOR TO
INSTALLATION AND FABRICATION

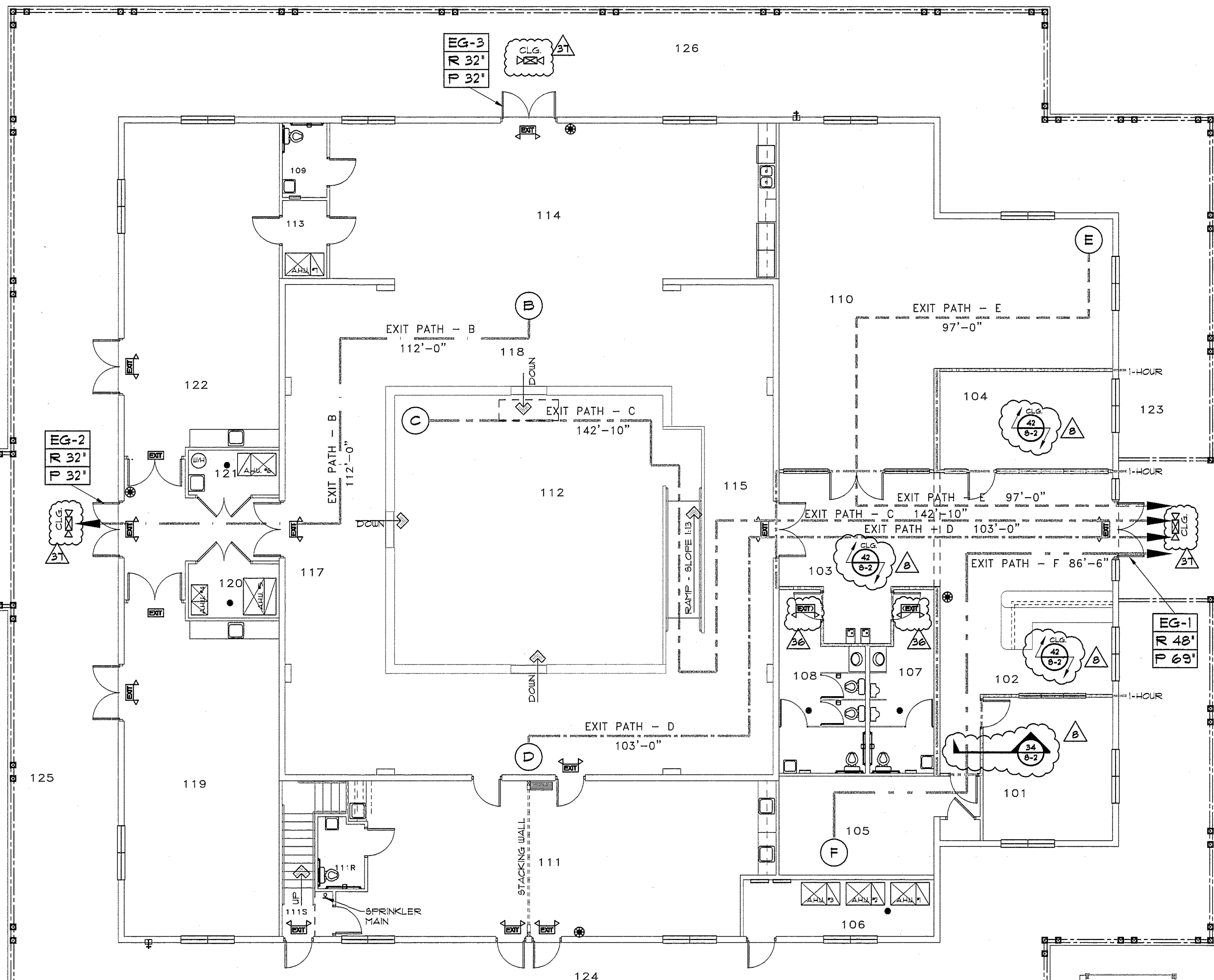


LIFE SAFETY SYMBOLS

- EMERGENCY LIGHT
- EMERGENCY LIGHT (CEILING MTD.)
- LIGHTED EXIT SIGN
- EMERGENCY LIGHT/LIGHTED EXIT SIGN
- FIRE EXTINGUISHER IN CABINET
- SMOKE DETECTOR

FIRE PARTITION LEGEND

(1) HOUR FIRE CORRIDOR
INDICATION BY SHADING OR SCHEDULES AS INDICATED BY NOTES



LIFE SAFETY PLAN - FIRST FLOOR

SCALE: 1/8" = 1'-0"

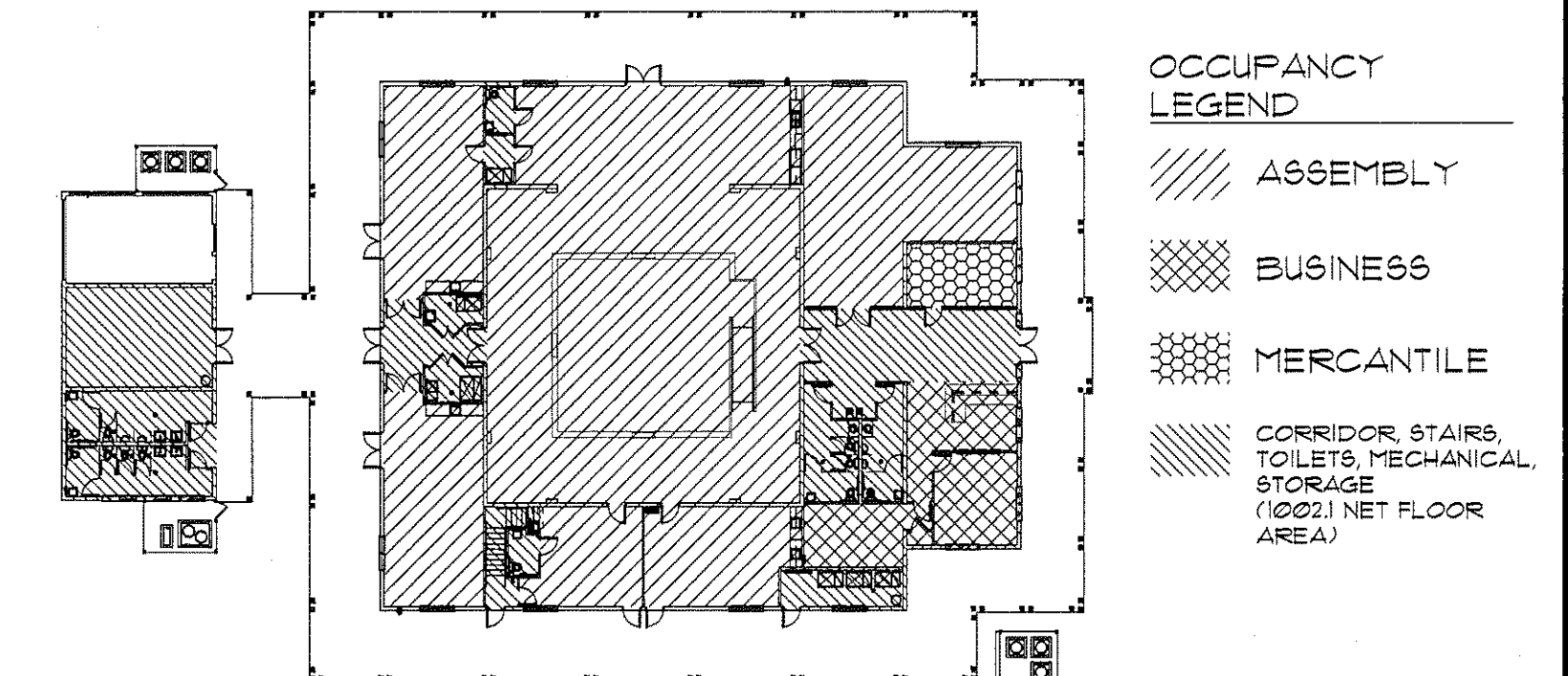
CODES USED FOR BUILDING DESIGN:
FLORIDA BUILDING CODE 2004: BUILDING
(WITH 2006 AMENDMENTS)
FLORIDA BUILDING CODE 2004: PLUMBING
FLORIDA BUILDING CODE 2004: MECHANICAL
2005 NATIONAL ELECTRICAL CODE
2004 FLORIDA FIRE PREVENTION CODE

ZONING DESIGNATION: PUBLIC

TYPE OF CONSTRUCTION:
ONE STORY
FULLY SPRINKLED

CONSTRUCTION TYPE:	TYPE VB-	ALLOWABLE	PROVIDED
BUILDING AREA	18,000 SF. (6,000 X 300%) (506.3)	11,811 SF.	
BUILDING HEIGHT	60 FEET (40' + 20') (504.2)	38.66'	

OCCUPANCY KEY PLAN:



OCCUPANCY CLASSIFICATION and CALCULATIONS:

USE	FLOOR AREA (S.F.)	FLOOR AREA PER OCCUP. (S.F.)	OCCUPANTS	OCCUPANCY SEPARATION (HR.)
ASSEMBLY A-3 ALLOWABLE AREA: 18,000 SF. (6,000 SF. X 300%) (506.3)	6,950 NET	15 NET	464	0
BUSINESS * ACCESSORY ASSEMBLY (3022) (LESS THAN 10% OF A-3)	633 GROSS	100 GROSS	7	0
MERCANTILE (1) HOUR REDUCTION IF FIRE RESISTANCE RATING (30222 EXCEPTION)	213 GROSS	60 GROSS	4	1
MEZZANINE/STORAGE (STORAGE 201 + SOUND/LIGHTING BOOTH 202)	970 GROSS	300 GROSS	3	0
MAX. OCCUPANCY:				478 OCCUPANTS

PLUMBING FIXTURE CALCULATIONS:

WATER CLOSETS:	REQUIRED	PROVIDED
MALE (1 PER 125)	3	7
FEMALE (1 PER 65)	6	7
CHILDREN'S (UNISEX)		1
LAVATORIES:		
MALE (1 PER 200)	2	4
FEMALE (1 PER 200)	2	4
WATER FOUNTAINS:		
(1 PER 500)	1 (HI/LO)	1 (HI/LO)

MEANS OF EGRESS:

	ALLOWABLE	PROVIDED
MAX TRAVEL DISTANCE (1015.1) + 1024.1)	200'	143' MAX
MAX. DEAD END:	20'	19' MAX
EGRESS WIDTH/OCCUPANT (1005.1):	0.2'	
MIN. CORRIDOR/AISLE WIDTH (1016.4):	44"	
CORRIDOR/AISLE FIRE RATING (1016.1) (1) HR (OVER 30')		LOBBY CORRIDOR
MIN. CLEAR OPENING OF EXIT DR.	32"	
COMMON PATH OF TRAVEL (1013.3):	75'	37'
MIN. NO. OF EXITS (1018.1):	2	3

EGRESS WIDTH PER OCCUPANT:

TOTAL REQUIRED (1005.1): 96.5' WIDTH
50% WIDTH AT MAIN ENTRANCE (1024.2): 47.8' WIDTH

EG-*	CLEAR WIDTH	EG-1 (MAIN)	EG-2 (REAR)	EG-3 (LEFT SIDE)
REQR		47.8'	32'	32'
PROV		69'	69'	69'

THE BUILDING SHALL BE EQUIPPED WITH AN AUTOMATIC FIRE ALARM SYSTEM THAT IS ACTIVATED UPON DETECTION OF WATER FLOW IN THE BUILDING SPRINKLER SYSTEM.

WIND ZONE DESIGN LOADS:

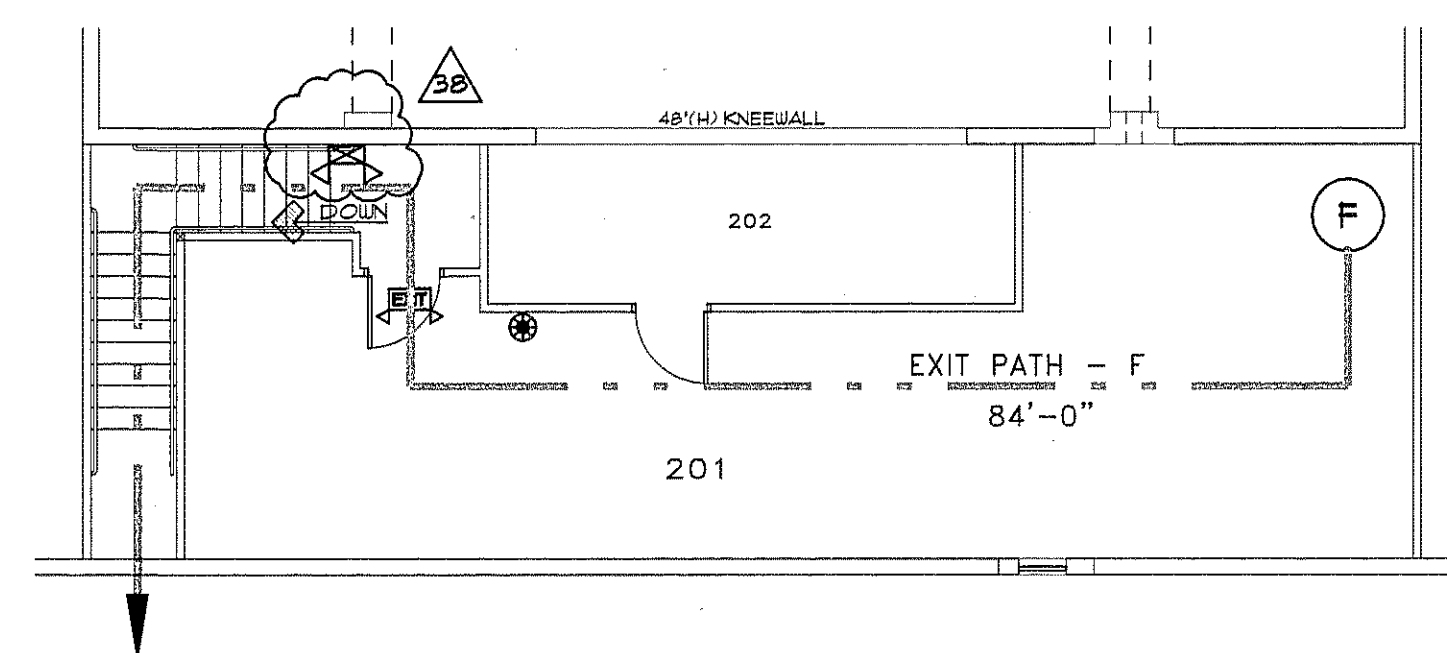
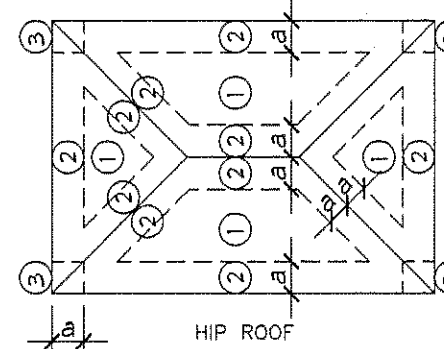
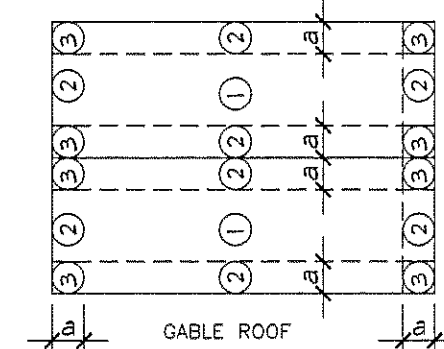
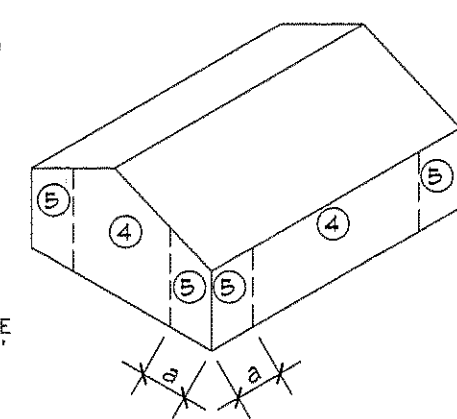
DESIGN STATEMENT: THIS STRUCTURE HAS BEEN DESIGNED IN ACCORDANCE WITH THE FBC 2004 BUILDING WITH 2006 AMENDMENTS THE DESIGN CRITERIA ARE AS FOLLOWS:

BASIC WIND SPEED: 120mph (3 SEC. GUST)
WIND IMPORTANCE FACTOR: I
BUILDING CATEGORY: II
WIND EXPOSURE: B
INTERNAL PRESSURE COEFFICIENT: 0.18

DESIGN WIND PRESSURES (psf) FOR SELECTION OF COMPONENTS AND CLADDING:

ROOF DESIGN VARIABLES:
ROOF PITCH: 6:12 PITCH
MEAN ROOF HEIGHT: 26.5' ABV. GRADE
MAIN BUILDING HEIGHT (H): 38.66' ABV. GRADE
MAIN BUILDING LENGTH/WIDTH: 135.33' X 116.66'
EDGE DISTANCE (e): 13.5'
(e = 10%L or W or 0.4H or 3'MIN.)

DESIGN PRESSURES (psf):
ROOF: ZONE 1: 14.9/-23.7
 ZONE 2: 14.9/-41.3
 ZONE 3: 14.9/-61.0 (INCLUDES OVER HANG, FASCIA and SOFFIT)
WALL: ZONE 4: 23.9/-28.1
 ZONE 5: 25.9/-34.7



LIFE SAFETY PLAN - STORAGE/CONTROL ROOM

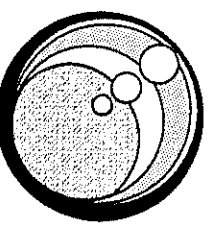
SCALE: 1/8" = 1'-0"

AREAS (GROSS SF.)

MAIN BLDG.	ATTACHED BLDG.
ASSEMBLY	RESTROOMS
GALLERIES A-D	STORAGE
FORMAL GALLERY	FIRING ROOM
STUDIO	BREEZE/PORCH
BUSINESS/OFFICES COMMON/RESTROOMS	
MECHANICAL	
COV. WRAP PORCH	
UPSTAIRS STORAGE/SOUND BOOTH	
TOTAL MAIN BLDG.	TOTAL ATTACHED BLDG.
16,167	1,856
TOTAL AREA	18,123

DESIGN SPECIFICATIONS

BEARD GROSS ARCHITECT
780 Deltona Blvd., Suite 105
Deltona, Florida 32725
386-574-2961
FL REG. ARCHITECT NO. 5998



Ver. 10

LIFE SAFETY and DESIGN SPECS.

Gateway Center for the Arts
DEBARY, FLORIDA

REVISIONS

PROJECT NO: 06CA1080
DATE: 4 APR 2008
DRAWN BY: TML

SHEET NO:

A-0