

29 - SECTION @ RECESS IN CONCRETE SLAB

SCALE: 1" = 1'-0"

SLAB HEIGHT SCHEDULE

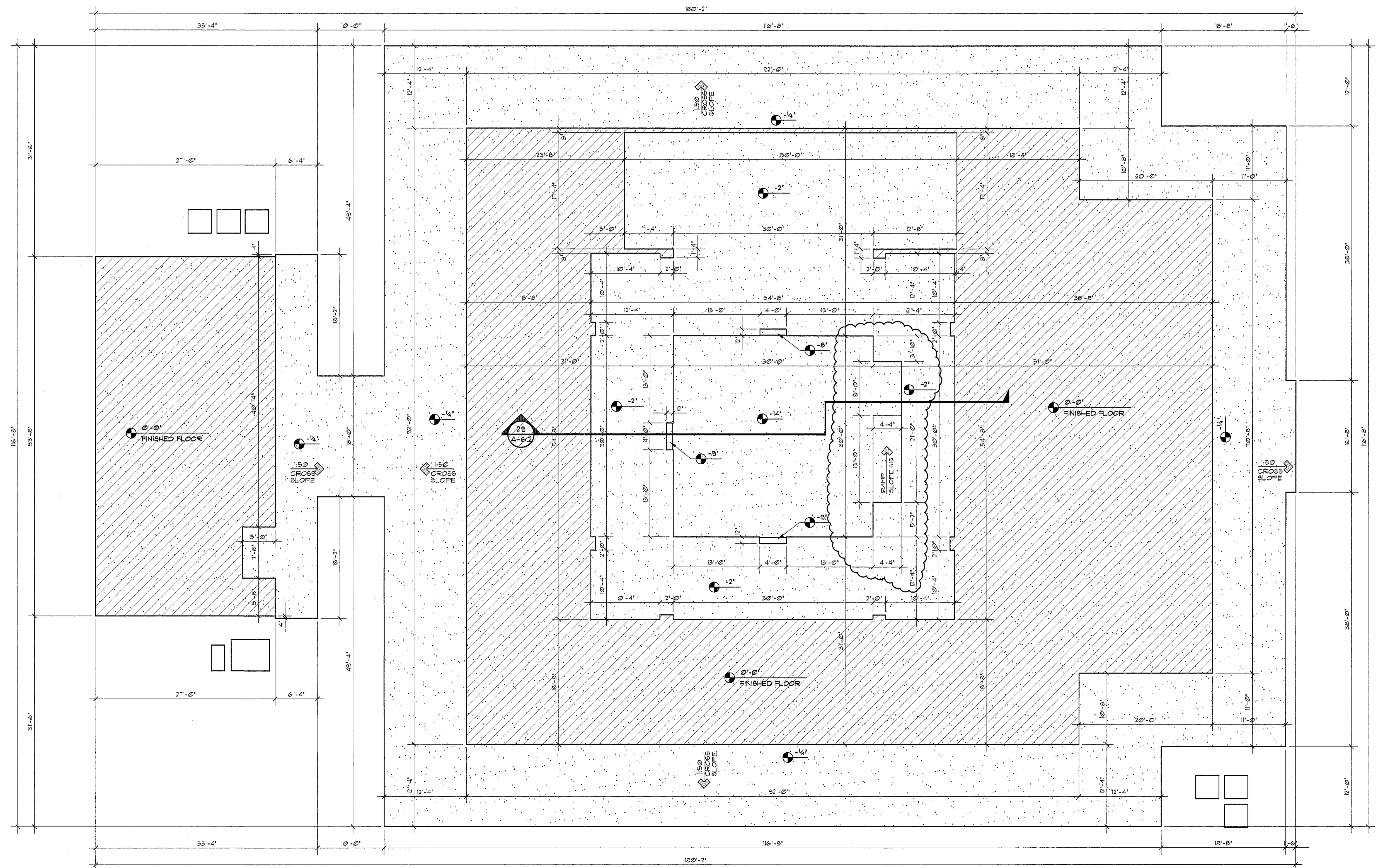
	0'-0" FIN. FLR.
--	-----------------

REINFORCED CONCRETE

- RC-1. ALL CONCRETE DESIGN AND PLACEMENT SHALL BE IN STRICT ACCORDANCE WITH ACI 318-08, "BUILDING REQUIREMENTS FOR REINFORCED CONCRETE".
- RC-2. STRUCTURAL CONCRETE SHALL CONFORM TO ACI 308 SPECIFICATIONS, AND SHALL DEVELOP THE FOLLOWING MINIMUM COMPRESSIVE STRENGTHS AT 28 DAYS, AS WELL AS OTHER PROPERTIES SPECIFIED IN THESE DOCUMENTS. (SEE SPECIFICATIONS FOR ADDITIONAL DESIGN MIX REQUIREMENTS.)

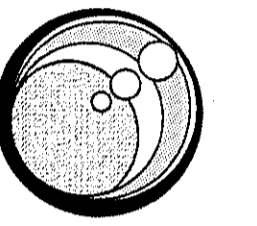
FOOTINGS:	3,000 PSI
SLABS ON GRADE:	3,000 PSI
WALL LINTELS:	4,000 PSI
FILLED CELLS:	4,000 PSI
CMU COLUMN FILL:	4,000 PSI
- RC-3. CONCRETE SHALL BE READY-MIX, REGULAR WEIGHT FOR ALL STRUCTURAL USES, WITH MINIMUM DRY DENSITY OF 145 LB. PER CUBIC FOOT.
- RC-4. CHAMFER ALL EXPOSED CONCRETE EDGES, INCLUDING THOSE TO RECEIVE STUCCO FINISH (3/4") UNLESS NOTED OTHERWISE.
- RC-5. REINFORCING STEEL SHALL BE DETAILED, FABRICATED AND INSTALLED IN ACCORDANCE WITH ACI 318-08 AND ACI DETAILING MANUAL, ACI 315.
- RC-6. REINFORCING STEEL SHALL BE NEW, DEFORMED BARS, FREE OF RUST, SCALE AND OIL, CONFORMING TO ASTM A-615, GRADE 60 WITH A MINIMUM YIELD STRENGTH + 60 PSI, UNLESS OTHERWISE SHOWN.
- RC-7. PROVIDE CONTINUOUS REINFORCEMENT WITH ACI CLASS 'B' LAB SPLICES, OR AS NOTED OTHERWISE.
- RC-8. WELDED WIRE FABRIC REINFORCEMENT SHALL CONFORM TO ASTM A-185. PROVIDE MINIMUM 6" LAPS, TYPICAL. PROVIDE ADEQUATE SUPPORTS AND BOLSTERING TO PRESERVE THE SPECIFIED POSITION OF THE MESH DURING CONCRETE PLACEMENT AND FINISHING.
- RC-9. TERMINATE ALL DISCONTINUOUS ENDS OF TOP BARS WITH STANDARD ACI HOOKS. TURN HOOKS UP OR DOWN INTO SUPPORTING STRUCTURE. CORNER BARS SHALL BE SUPPLIED AND PLACED IN ADDITION TO HOOKED ENDS, PER THE DETAILS IN THESE DOCUMENTS.
- RC-10. PROVIDE THE FOLLOWING MINIMUM CONCRETE COVERAGE OVER REINFORCING UNLESS NOTED OTHERWISE:

FOOTINGS, BOTTOM AND ENDS:	3"
FOOTINGS, TOP:	2"
SLAB ON GRADE, BOTTOM:	3"
SLAB ON GRADE, TOP:	1"
- RC-11. PROVIDE CORE TESTING EVERY 50 SF. DURING SLAB POUR.
- RC-12. OWNER/DEVELOPER TO PROVIDE GEOTECHNICAL REPORT TO THE ARCHITECT AND STRUCTURAL ENGINEER PRIOR TO FINAL DESIGN.
- RC-13. A COMPACTION OF 95% MODIFIED PROCTOR DENSITY MUST BE ACHIEVED AND CONFIRMED BY GEOTECHNICAL ENGINEER PRIOR TO PLACEMENT OF CONCRETE FOOTINGS AND PAD.



SLAB PLAN

SCALE: 1/8" = 1'-0"



GERALD GROSS AIA FABA
architect
780 Deltona Blvd, Suite 105
Deltona, Florida 32725
386-574-2961
FL REG. ARCHITECT NO. 5998

Ver. 10

SLAB PLAN
Gateway Center for the Arts
DEBARY, FLORIDA

REVISIONS

PROJECT NO:
06CA1006.2
DATE:
4 APR 2008
DRAWN BY:
JTR

SHEET NO:
A-6.2

DESIGNER HEREBY EXPRESSLY RESERVES HIS COPYRIGHT AND OTHER PROPERTY RIGHTS IN THESE PLANS. THESE PLANS AND DRAWINGS ARE NOT TO BE REPRODUCED, CHANGED OR COPIED IN ANY FORM OR MANNER WHATSOEVER, NOR ARE THEY TO BE ASSIGNED TO ANY PARTY WITHOUT FIRST OBTAINING THE EXPRESSED WRITTEN PERMISSION AND CONSENT OF GERALD GROSS ARCHITECT.