

SAFE LOAD TABLE NOTES

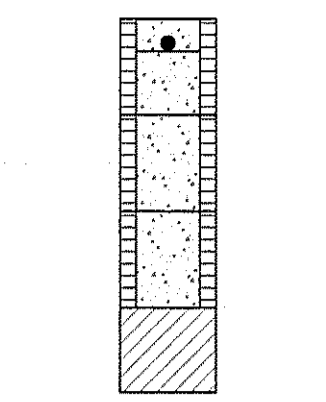
- All values based on minimum 4" bearing. Exception: Safe loads for unfilled lintels must be reduced by 20% if bearing length is less than 6-1/2". Safe loads for all recessed lintels based on 8" nominal bearing.
- NR = Not Rated.
- Safe loads are total superimposed allowable load on the section specified.
- Safe loads based on grade 40 or grade 60 field rebar.
- Additional lateral load capacity can be obtained by the designer by providing additional reinforced masonry above the precast lintel.
- One #1 rebar may be substituted for two #5 rebars in 8" lintels only.
- The designer may evaluate concentrated loads from the safe load tables by calculating the maximum resisting moment and shear at d-away from the face of support.
- For composite lintel heights not shown, use safe load from next lower height.
- All safe loads in units of pounds per linear foot.

GENERAL NOTES

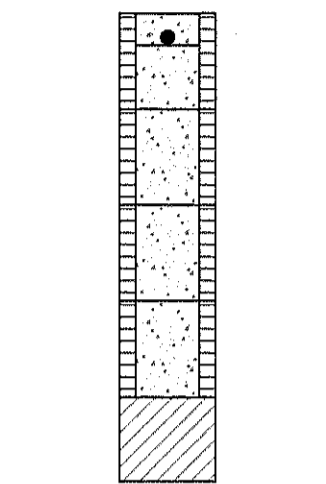
- Provide full mortar head and bed joints.
- Shore filled lintels as required.
- Installation of lintel must comply with the architectural and/or structural drawings.
- Lintels are manufactured with 3-1/2" long notches at the ends to accommodate vertical cell reinforcing and grouting.
- All lintels meet or exceed L/360 vertical deflection, except lintels 17'-4" and longer with a nominal height of 8" meet or exceed L/80.
- Bottom field added rebar to be located at the bottom of the lintel cavity.
- 7/32" diameter wire stirrups are welded to the bottom steel for mechanical anchorage.
- Cast-in-place concrete may be provided in composite lintel in lieu of concrete masonry units.
- Safe load ratings based on rational design analysis per ACI 308 and ACI 530.

MATERIALS

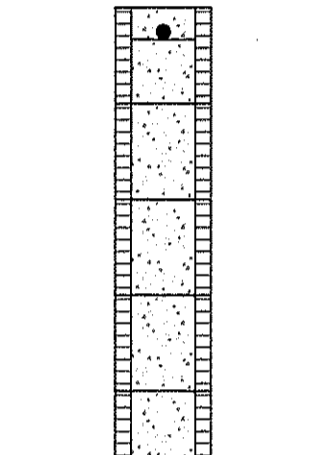
- FC precast lintels = 3500 psi.
- FC prestressed lintels = 6000 psi.
- FC grout = 3000 psi w/ maximum 3/8" aggregate.
- Concrete masonry units (CMU) per ASTM C90 w/ minimum net area compressive strength = 1900 psi.
- Rebar provided in precast lintel per ASTM A615 GR60. Field rebar per ASTM A615 GR40 or GR60.
- Prestressing strand per ASTM A416 grade 270 low relaxation.
- 7/32 wire per ASTM A510.
- Mortar per ASTM C270 type M or S.



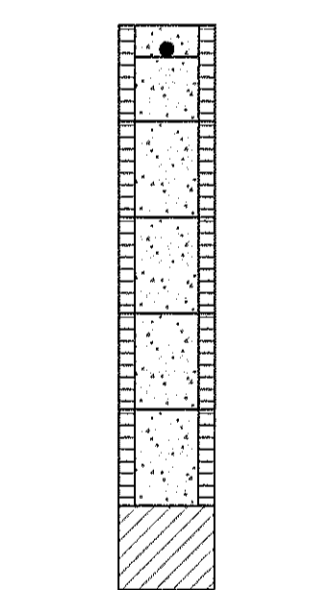
8F32-1B/1T



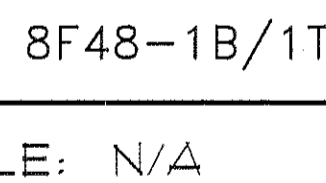
8F40-1B/1T



8F46-1B/1T RECESSED



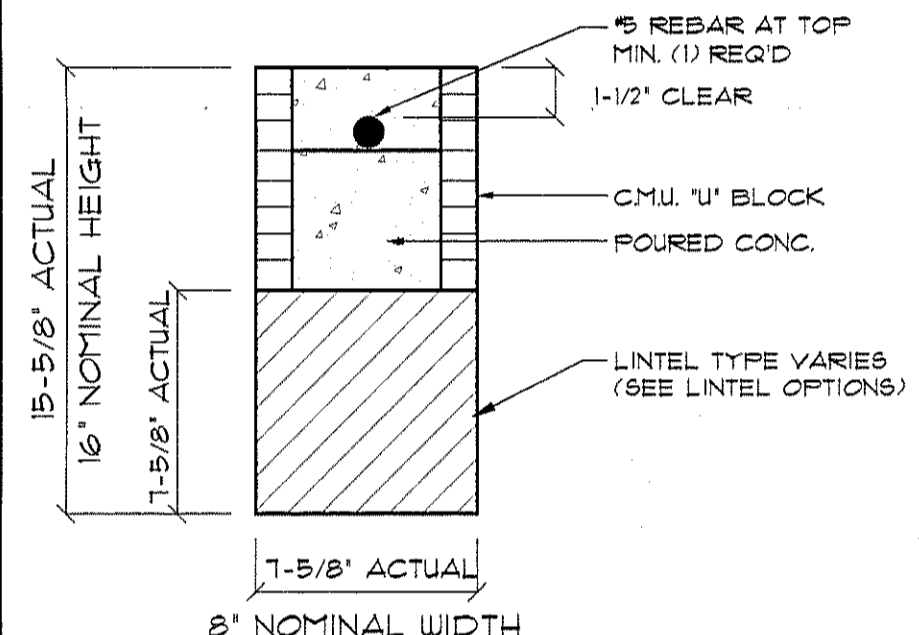
8F22-1B/1T RECESSED



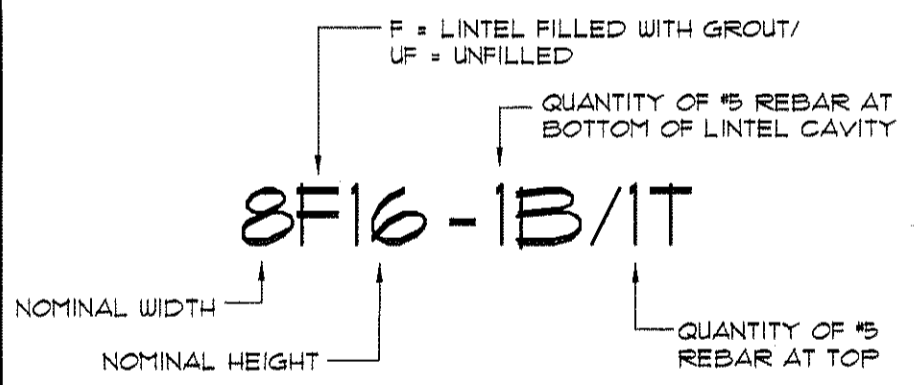
8F24-1B/1T



8F48-1B/1T

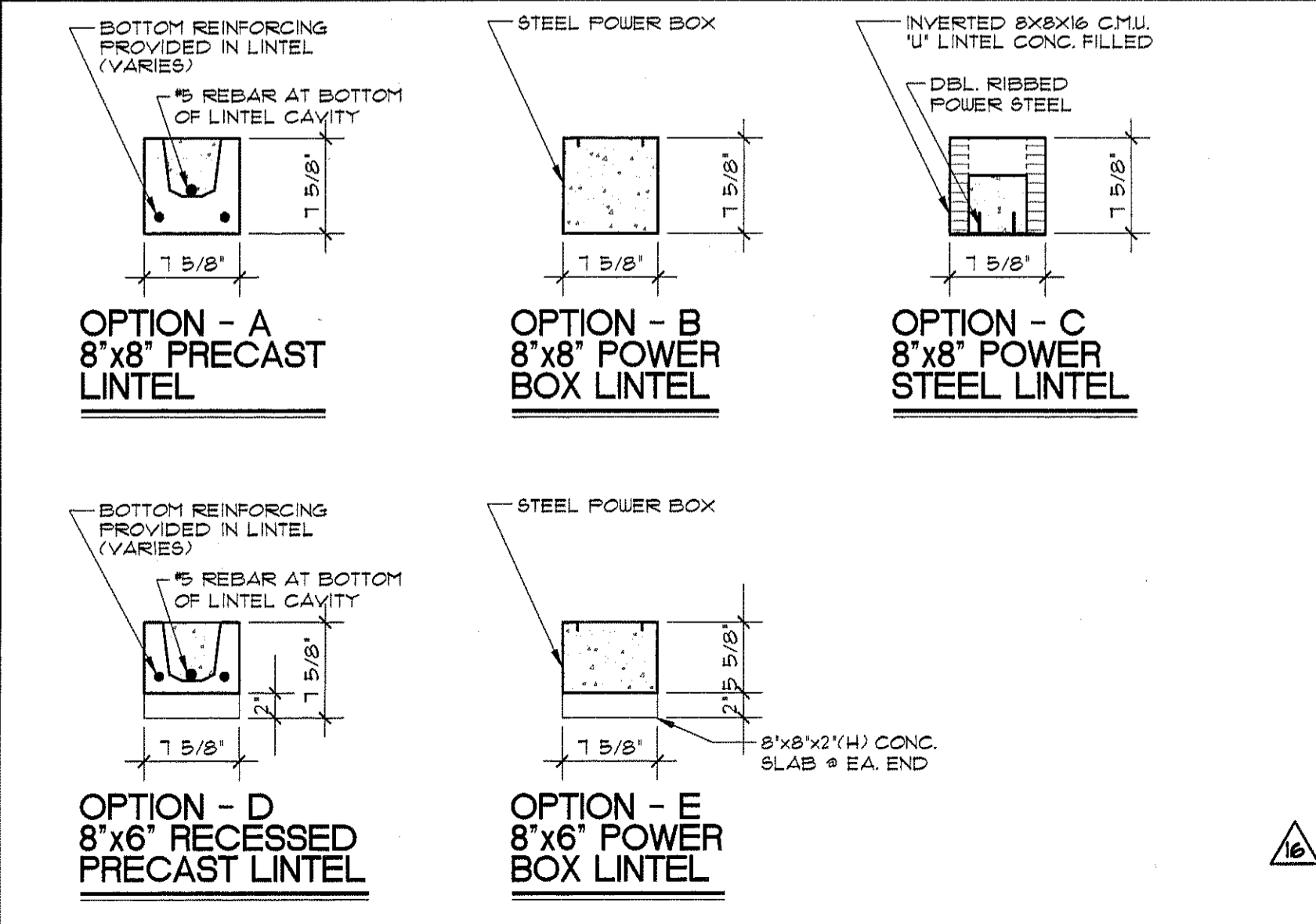


8F16-1B/1T

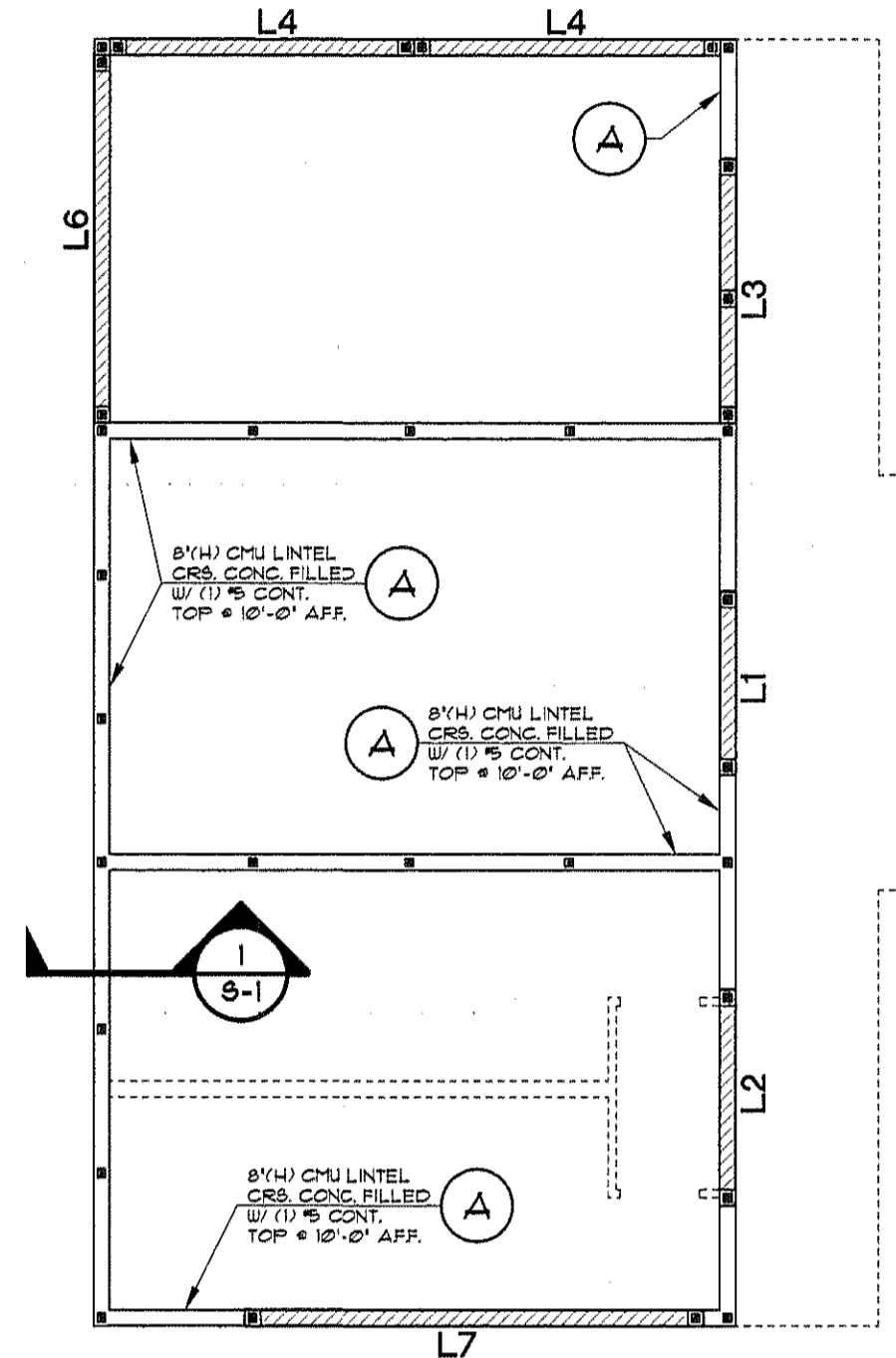


8F16-1B/1T

BOND BEAM SECTIONS SCALE: N/A



LINTEL OPTIONS SCALE: 1" = 1'-0"



BEARING WALL SCHEDULE

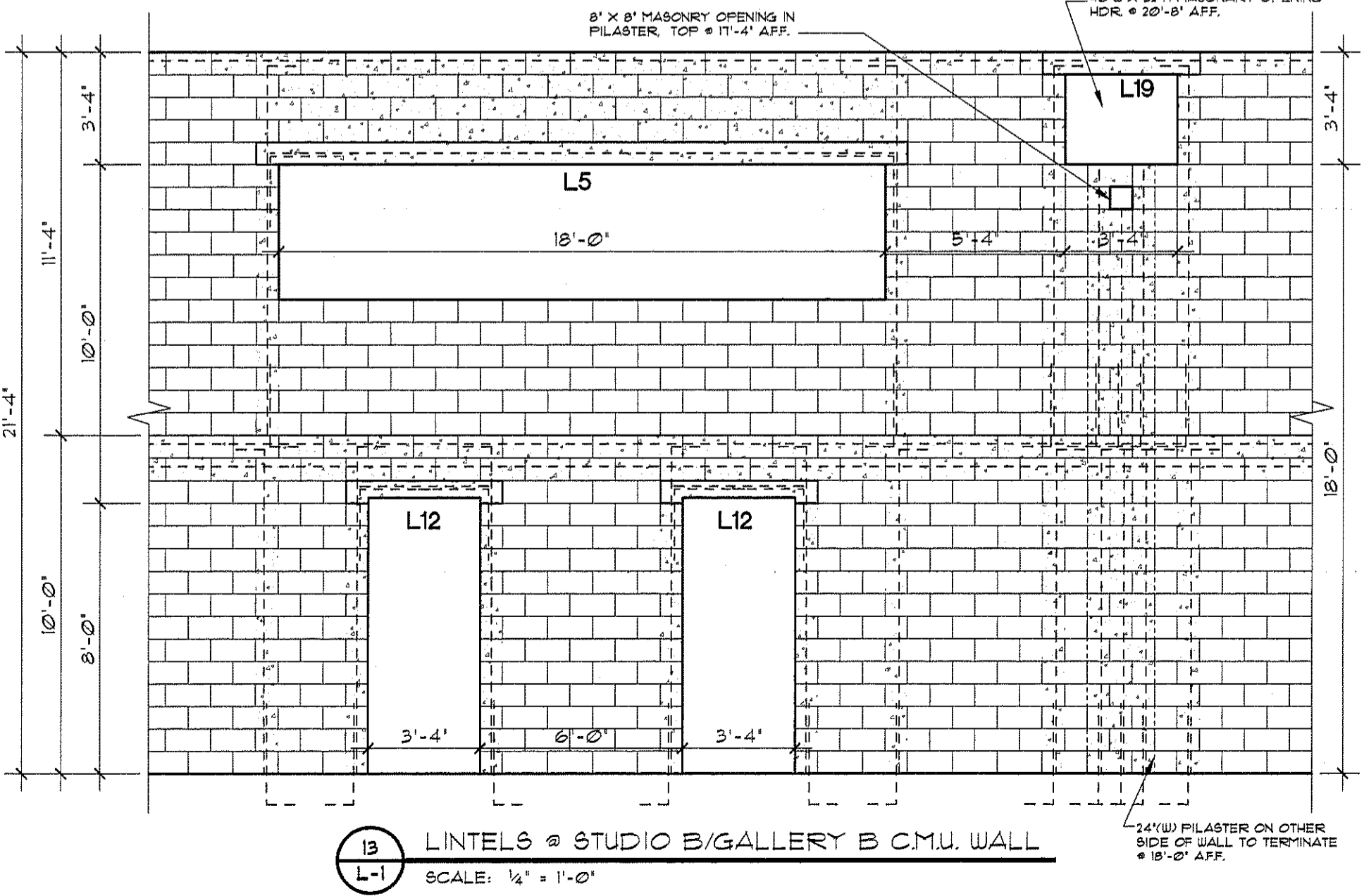
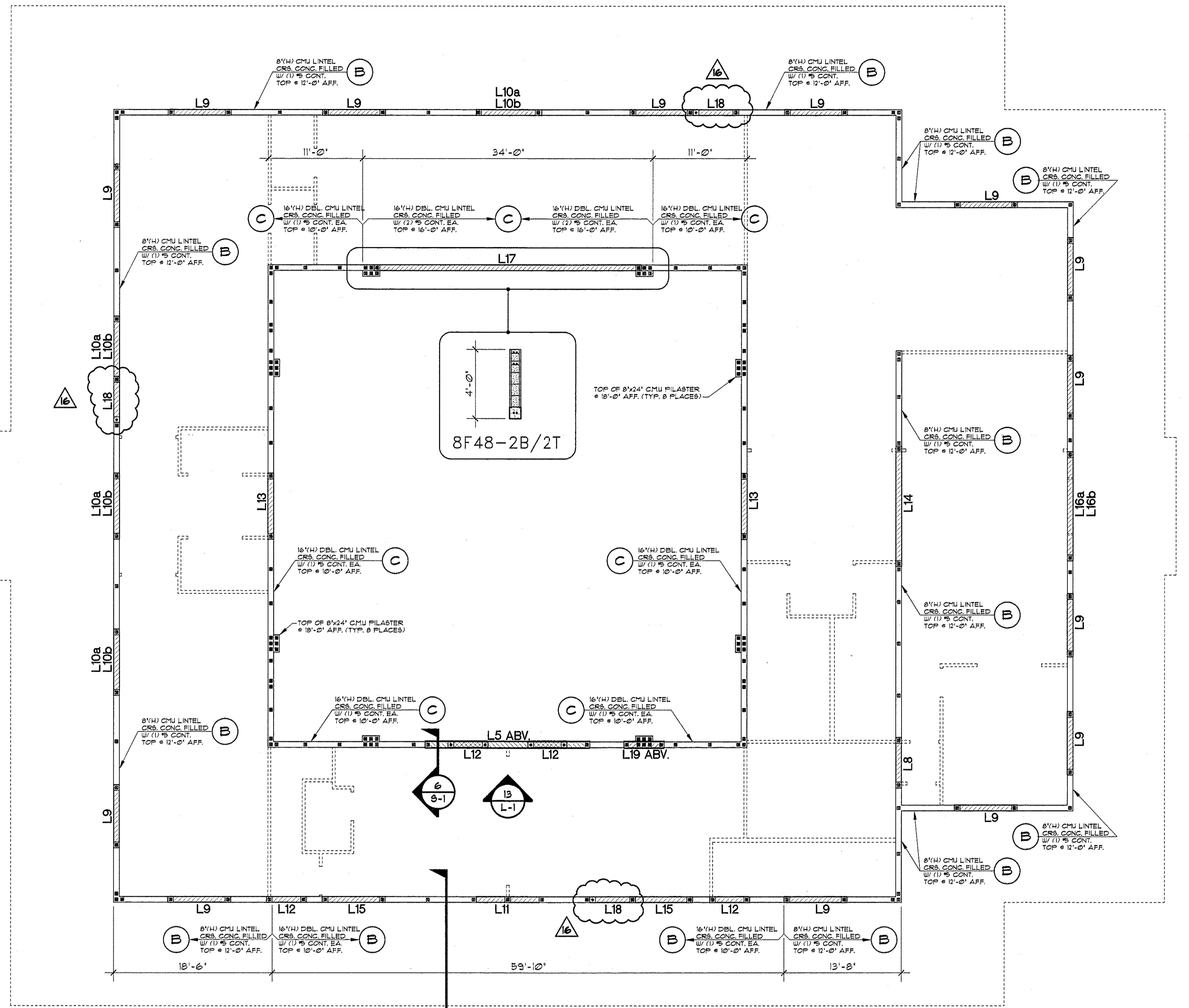
TYPE	BEAR. HT. (AFF.)	LOCATION
A	CMU, 14'-0"	EXTERIOR
B	CMU, 17'-4"	EXTERIOR
C	CMU, 21'-4"	INTERIOR

REBAR SCHEDULE

- DENOTES CONC FILLED BLOCK CELL W/ (1) #5 VERT. W/ 25" LAP & FTG. CONT. FROM FTG. TO TOP OF CMU WALL.
- DENOTES CONC FILLED BLOCK CELL W/ (1) #5 VERT. W/ 25" LAP & FTG. CONT. FROM FTG. TO 10'-0" AFF.

LINTEL SCHEDULE

LINTEL NO.	TOTAL LENGTH	TYPE	CLEAR SPAN	HEADER HT.	LINTEL OPTION	COMMENTS
L 1	7'-8"	8 F 22-1B/1T	6'-4"	8'-0" A.F.F.	D,E	RECESSED
L 2	9'-0"	8 F 24-1B/1T	7'-8"	12'-0" A.F.F.	A,B,C	
L 3	11'-0"	8 F 24-1B/1T	9'-8"	12'-0" A.F.F.	A,B,C	
L 4	12'-10"	8 F 24-1B/1T	11'-6"	12'-0" A.F.F.	A,B,C	
L 5	19'-4"	8 F 40-1B/1T	18'-0"	18'-0" A.F.F.	A,B,C	
L 6	15'-4"	8 F 24-1B/1T	14'-0"	12'-0" A.F.F.	A,B,C	
L 7	19'-4"	8 F 24-1B/1T	18'-0"	12'-0" A.F.F.	A,B,C	
L 8	5'-10"	8 F 16-1B/1T	4'-6"	8'-8" A.F.F.	A,B,C	
L 9	7'-4"	8 F 24-1B/1T	6'-0"	10'-0" A.F.F.	A,B,C	
L 10a	7'-8"	8 F 6-1B/1T	6'-4"	8'-0" A.F.F.	D,E	RECESSED
L 10b	7'-8"	8 F 24-1B/1T	6'-4"	10'-0" A.F.F.	A,B,C	
L 11	8'-8"	8 F 22-1B/1T	7'-4"	8'-0" A.F.F.	D,E	RECESSED
L 12	4'-8"	8 F 22-1B/1T	3'-4"	8'-0" A.F.F.	D,E	RECESSED
L 13	7'-8"	8 F 46-1B/1T	6'-4"	8'-0" A.F.F.	D,E	RECESSED
L 14	14'-0"	8 F 16-1B/1T	12'-8"	16'-0" A.F.F.	A,B,C	
L 15	7'-4"	8 F 24-1B/1T	6'-0"	8'-0" A.F.F.	A,B,C	
L 16a	12'-8"	8 F 6-1T	11'-4"	8'-0" A.F.F.	D,E	RECESSED
L 16b	12'-8"	8 F 32-1B/1T	11'-4"	14'-8" A.F.F.	A,B,C	
L 17	31'-4"	8 F 48-2B/2T	30'-0"	12'-0" A.F.F.	B	POWER BOX
L 18	5'-4"	8 F 8-1T	4'-0"	16'-8" A.F.F.	A,B,C	
L 19	4'-8"	8 F 8-1T	3'-4"	20'-8" A.F.F.	A,B,C	



LINTEL PLAN SCALE: 1/8" = 1'-0"

DESIGNER HEREBY EXPRESSLY RESERVES HIS COPYRIGHT AND OTHER PROPERTY RIGHTS IN THESE PLANS. THESE PLANS AND DRAWINGS ARE NOT TO BE REPRODUCED, CHANGED OR COPIED IN ANY FORM OR MANNER WHATSOEVER, NOR ARE THEY TO BE ASSIGNED TO ANY PARTY, WITHOUT FIRST OBTAINING THE EXPRESSED WRITTEN PERMISSION AND CONSENT OF GREAT GROSS ARCHITECT.

REVISIONS

PROJECT NO: 06CA108L
DATE: 4 APR 2008
DRAWN BY: JTR
SHEET NO: L-1

BEARD GROSS ARCHITECT
 AIA FARA
 780 Deltona Blvd, Suite 105
 Deltona, Florida 32725
 386-574-2961
 FL REG. ARCHITECT NO. 5998

Ver. 10

LINTEL PLAN
Gateway Center for the Arts
 DEBARY, FLORIDA