

LIGHTING FIXTURE SCHEDULE					
TYPE	MANUFACTURER	CATALOG NO.	LAMPS	MOUNTING	QUANTITY
A	LITHONIA (FLOUR) 1'x4' BLACK STIRLING	HD 135-922	2-32W T-8 ELECTRONIC BALLIST DAYLIGHT DELUXE	CHAIN DROP	16
B	LITHONIA (FLOUR) 1'-4" WRAP	HD 453-879	2-32W T-8 ELECTRONIC BALLIST DAYLIGHT DELUXE	SURFACE MOUNT	21
C	LITHONIA (FLOUR) 1'x4' RIGBY	HD 565-783	4-32W T-8 ELECTRONIC BALLIST DAYLIGHT DELUXE	SURFACE MOUNT	3
D	LITHONIA (FLOUR) 2'-4" WRAP	HD 433-180	4-32W T-8 ELECTRONIC BALLIST SOFT	SURFACE MOUNT	3
G	TRACK LIGHT OR WIRE & PENDANT		50W HALIGON	TRACK OR WIRE	
H	PENDANT FLOOD		250W FLOOD	DROP LEVEL W/ LIGHT TRUSS	
K	HALO 6" RECESS REFLECTOR-CHROME TRIM-WHITE	HD 796-928	100W SPOT	6" RECESS	30
L	HALO 6" RECESS REFLECTOR-CHROME TRIM-BLACK	HD 959-724 (BLACK TRIM)	100W SPOT	6" RECESS	14 (6 PACK)
M	COMMERCIAL ELECTRIC 6" OPEN TRIM WHITE	HD 285-669	100W SPOT	6" RECESS BULB FLUSH W/TRIM	82

LIGHTING FIXTURE SCHEDULE (cont...)					
TYPE	MANUFACTURER	CATALOG NO.	LAMPS	MOUNTING	QUANTITY
N			25W INCAND.	CEILING SURFACE	
P			2-32W T8	STAIRWAY BRACKET	
Q	BATH BAR 4-BULB	HD 644-257	4-G25 TYPE-G 40W	WALL MTG.	
R	2x4 ELEC LAY-IN FLEX	HD 458-149	32W BULB		12
EB	EMERGENCY LIGHT BLACK	HD 307-158	LAMP/BATTERY INCLUDED	WALL MTG.	7
XIB	EXIT LIGHT BLACK	HD 307-063	LAMP/BATTERY INCLUDED	WALL MTG.	4
XIE	EXIT/EMERGENCY COMBO - WHITE (OR EQUAL)	HD 204-610	LAMP/BATTERY INCLUDED (OR EQUAL)	WALL MTG.	9
XI	EXIT LIGHT WHITE	HD 583-260	LAMP/BATTERY INCLUDED	WALL MTG.	2

PANEL: A						
CT	DESCRIPTION	POLE	AMPS	WIRE	COND	ØC
1,3	ELECTRONICS	1	120	#12	1/2"	
5,7	ELECTRONICS	1	120	#12	1/2"	
9,11	ELECTRONICS	1	120	#12	1/2"	
13,15	ELECTRONICS	1	120	#12	1/2"	

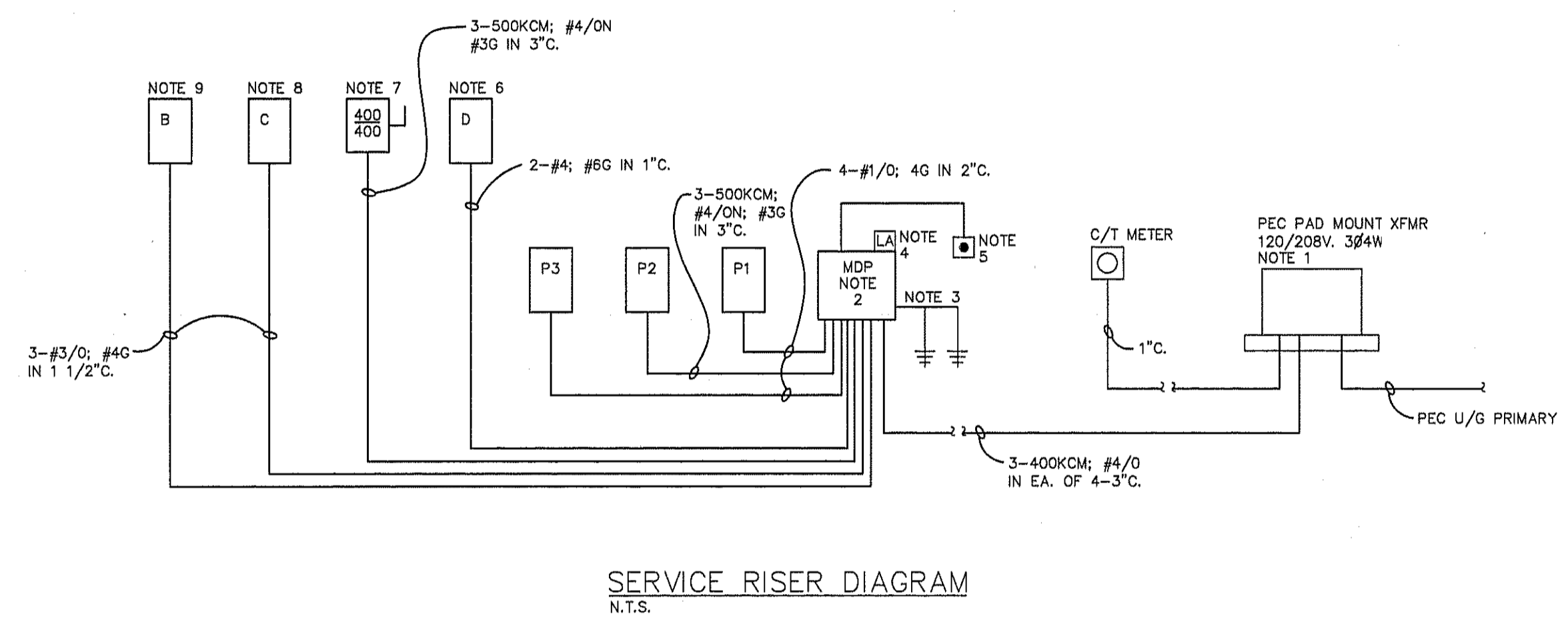
PANEL: P1						
CT	DESCRIPTION	POLE	AMPS	WIRE	COND	ØA ØB ØC
1-16	LIGHTS	1	20	#12	1/2"	54 54 36
17-24	SPARE	1	20	-	-	-
25-33	OUTLETS	1	20	#12	1/2"	28 21 14
34-42	SPARE	1	20	-	-	-

PANEL: B						
CT	DESCRIPTION	POLE	AMPS	WIRE	COND	ØA ØB ØC
1-24	OUTLETS	1	20	#12	1/2"	
25-30	SPACE					

PANEL: P2						
CT	DESCRIPTION	POLE	AMPS	WIRE	COND	ØA ØB ØC
1	SPARE	1	20	#12	1/2"	
3,5	EWI	2	30	#10	1/2"	18 18
2,4	SPARE	2	30	-	-	-
6-11	LIGHTS	1	20	#12	1/2"	18 18 18
12-14	SPARE	1	20	-	-	-
15-24	OUTLETS	1	20	#12	1/2"	14 28 28
25-27	AHU-4	2	50	#8	3/4"	43 43 -
28,28,30	AHU-5	3	110	#2	1&1/4"	103 103 103
29,31	AHU-6	2	50	#8	3/4"	43 - 43
33,35	AHU-7	2	50	#8	3/4"	- 43 43
32,34	SPARE	2	30	#8	3/4"	-
26-42	SPARE	1	20	-	-	-

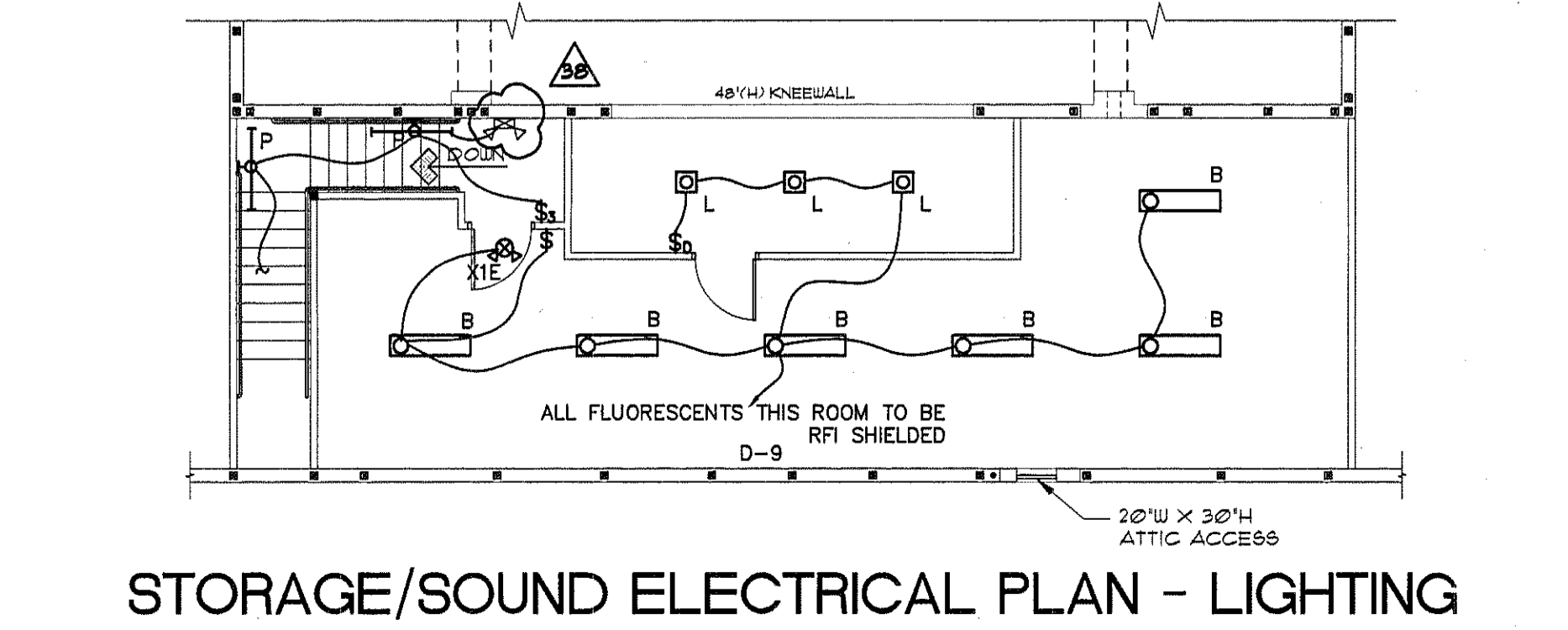
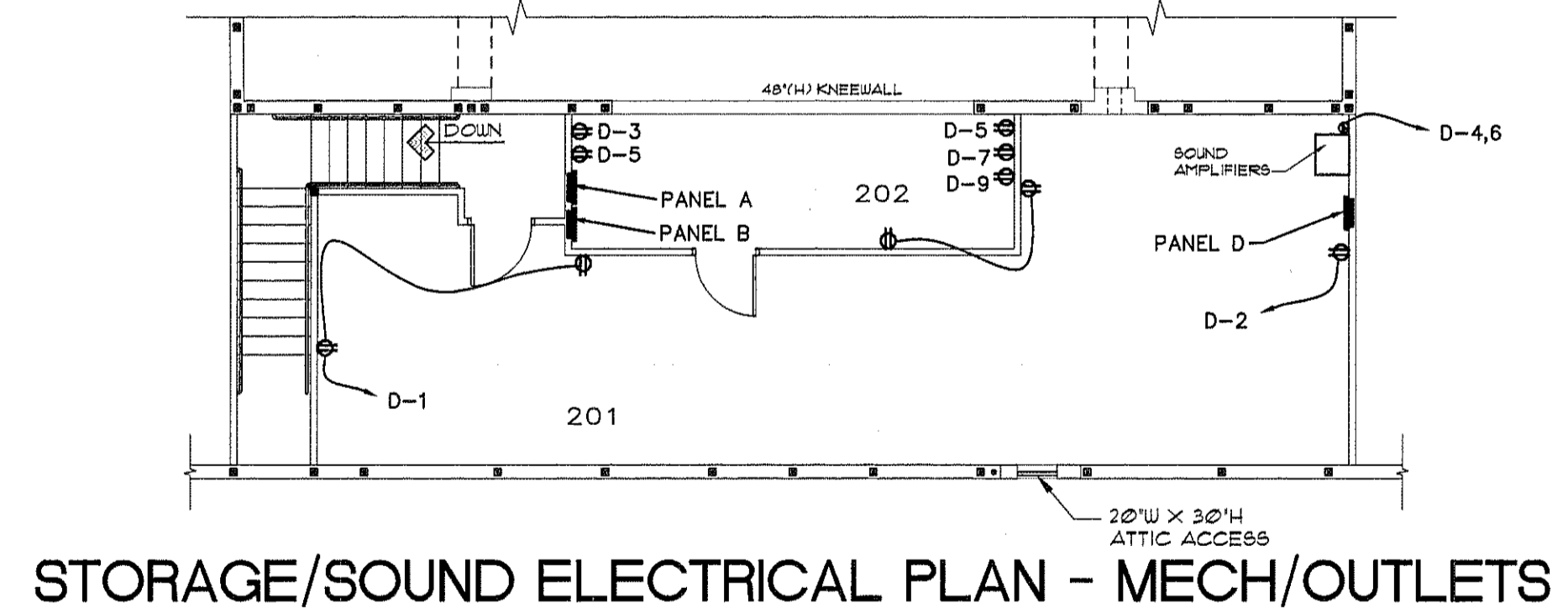
PANEL: C						
CT	DESCRIPTION	POLE	AMPS	WIRE	COND	ØA ØB ØC
1-24	STAGE LIGHTS	1	20	#12	1/2"	
25-30	SPACE					

PANEL: P3						
CT	DESCRIPTION	POLE	AMPS	WIRE	COND	ØA ØB ØC
1,3	AHU-8	2	15	#12	1/2"	1 1 1
5,7	AHU-9	2	15	#12	1/2"	1 1 1
9,11	ACU-8/9	2	30	#10	1/2"	11 11 11
2,4	ACU-4	2	40	#8	3/4"	17 17 17
14,16,18	ACU-5	3	50	#8	3/4"	32 32 32
6,8	ACU-6	2	40	#8	3/4"	17 17 17
10,12	ACU-7	2	40	#8	3/4"	17 17 17
13,15,17	SPARE	1	20	-	-	-
19-21	OUTLETS	1	20	#8	3/4"	14 7 -
22-24	SPARE	1	20	#8	3/4"	- - -
25,26	LIGHTS	1	20	#12	1/2"	18 - -
27-30	SPARE	1	20	-	-	- - -
31,33	J-BOX	2	40	#8	3/4"	- - -
32,34,36,38	J-BOX	1	20	#12	1/2"	- - -



PANEL: MDP						
CT	DESCRIPTION	POLE	AMPS	WIRE	COND	ØA ØB ØC
1,3,5	PANEL P1	3	150	#1/0	2"	82 75 50
7,9,11	PANEL P2	3	400	500K	3"	221 253 253
13,15,17	PANEL P3	3	150	#1/0	2"	100 85 78
2,4,6	PANEL A	3	400	500K	3"	
8,10	PANEL B	2	200	#3/0	1&1/2"	
12,14	PANEL C	2	200	#3/0	1&1/2"	
16	PANEL D	1	60	#4	1"	43
19,21	AHU-1	2	50	#8	3/4"	43 43
23,25	AHU-2	2	50	#8	3/4"	43 43
27,29	AHU-3	2	50	#8	3/4"	43 43
20,22	ACU-1	2	50	#8	1/2"	26 26
24,26	ACU-2	2	50	#8	-	26 26
28,30	ACU-3	2	50	#8	3/4"	26 26
31-42	PREP SPACE					

- NOTES:
- COORDINATE LOCATION AND INSTALLATION OF PROGRESS ENERGY PAD MOUNT TRANSFORMER WITH THAT UTILITY. PROVIDE ALL EASEMENTS AND ANY REQUIRED FEES TO THAT UTILITY. PEDESTAL MOUNT C/T METER ADJACENT TO TRANSFORMER.
 - PANEL MDP TO BE 1200 AMP MAIN BREAKERS SERVICE ENTRANCE RATED PANEL, PER SCHEDULE. WIRE SHUNT TRIP TO NOTE 5 EQUIPMENT.
 - SERVICE GROUND TO BE #3/0 COPPER RUN TO BUILDING SLAB STEEL AND 2-20' DRIVEN ELECTRODES, 20' ON CENTER.
 - LA TO BE LIGHTNING ARRESTOR SQUARE D MODEL SDSA 3650 OR APPROVED EQUAL.
 - PROVIDE EMERGENCY "BREAK GLASS" SHUNT TRIP OPERATOR, 84" AFF AT LOCATION APPROVED BY AHJ. WIRE TO OPERATE MAIN BREAKER SHUNT TRIP.
 - PROVIDE FEED SHOWN TO SOUND PANEL. WIRE LOCAL LIGHTING AND POWER OUTLETS FROM THIS PANEL. ALL AUDIO WIRING BY OTHERS.
 - PROVIDE 400 AMP 3 POLE 3 FUSE SOLID NEUTRAL NEMA 1 DISCONNECT FOR MAIN DIMMER RACK. DIMMERS AND ALL STAGE LIGHTING BY OTHERS.
 - PROVIDE PANEL D FOR STAGE LIGHTS. ALL STAGE LIGHTING BY OTHERS.
 - PROVIDE PANEL B FOR INTELLIGENT LIGHTS. ALL INTELLIGENT WIRING BY OTHERS.



ELECTRICAL SYMBOLS

NOTE: ALL DSL AND PHONE BOXES TO BE FED FROM CONDUIT IN WALL TO ATTIC SPACE.

⊖	110 V. DUPLEX OUTLET	⊖	TRACK LIGHT FIXTURE
⊖	110 V. G.P.I., DUPLEX OUTLET	⊖	EXHAUST FAN
⊖	1/2 HOT, 1/2 SWITCHED 110 V. DUPLEX OUTLET	⊖	EXHAUST FAN/LIGHT COMBO
⊖	WATERPROOF 110 V. DUPLEX OUTLET	⊖	MOTOR
⊖	FLOOR OUTLET	⊖	EMERGENCY LIGHT WALL MOUNT (2-HR BATTERY BACKUP)
⊖	220 V. DUPLEX OUTLET	⊖	EMERGENCY LIGHT CEILING MOUNT (2-HR BATTERY BACKUP)
⊖	PRE-WIRE FOR CLG. FAN	EXIT	LIGHTED EXIT SIGN (2-HR BATTERY BACKUP)
⊖	PRE-WIRE FOR GARAGE DOOR OPENER	EXIT	EMERGENCY LIGHT LIGHTED EXIT SIGN COMBO (2-HR BATTERY BACKUP)
⊖	SINGLE POLE SWITCH	☎	TELEPHONE
⊖	3-WAY SWITCH	⊖	ELECTRICAL PANEL
⊖	4-WAY SWITCH	⊖	DSL
⊖	G.F.I. SWITCH	⊖	TELEVISION JACK
⊖	CEILING MOUNTED LIGHT FIXTURE	⊖	SMOKE DETECTOR
⊖	CEILING MOUNTED PENDANT LIGHT FIXTURE	⊖	PUSH BUTTON
⊖	WALL MOUNTED LIGHT FIXTURE	⊖	JUNCTION BOX (AUDIO)
⊖	RECESSED LIGHT FIXTURE	⊖	SPEAKER (AUDIO)
⊖	WALL SCONCE	⊖	THERMOSTAT
⊖	FLOOD LIGHT FIXTURE	⊖	220 V. DISCONNECT
⊖	SURFACE MOUNTED FLUORESCENT FIXTURE		
⊖	FLUORESCENT FIXTURE		

PANEL NOTES

(A) 400 AMP, 3 PHASE CIRCUIT WITH DISCONNECT FOR MAIN DIMMER RACK (BY OTHERS)

(B) 200 AMP, 1 PHASE, 24 CIRCUIT PANEL FOR INTELLIGENT LIGHTS.

(C) 200 AMP, 1 PHASE, 24 CIRCUIT PANEL FOR STAGE LIGHTS.

(D) 100 AMP, 1 PHASE SUB PANEL FOR AUDIO

PAUL M. ESTES, P.E.
ELECTRICAL CONSULTANT

615 NORTH PENNSULA DRIVE
DAYTONA BEACH, FL 32118
(386)-252-6948
FL REG. PE # 33651

ELECTRICAL PLAN - SCHEDULES

SCALE: 1/8" = 1'-0"

DESIGNER HEREBY EXPRESSLY RESERVES HIS COPYRIGHT AND OTHER PROPERTY RIGHTS IN THESE PLANS. THESE PLANS AND DRAWINGS ARE NOT TO BE REPRODUCED, CHANGED OR COPIED IN ANY FORM OR MANNER WHATSOEVER, NOR ARE THEY TO BE ASSIGNED TO ANY PARTY WITHOUT FIRST OBTAINING THE EXPRESSED WRITTEN PERMISSION AND CONSENT OF GREGALD GROSS ARCHITECT.

GREGALD GROSS ARCHITECT
AIA, FARA
780 Deltona Blvd., Suite 105
Deltona, Florida 32725
386-574-2961
FL REG. ARCHITECT NO. 5998

PROJECT NO.: 06CA108E3
DATE: 4 APR 2008
DRAWN BY: TML

REVISIONS

ELECTRICAL PLAN - SCHEDULES

Ver. 10

Gateway Center for the Arts
DEBARY, FLORIDA

SHEET NO.: E-3