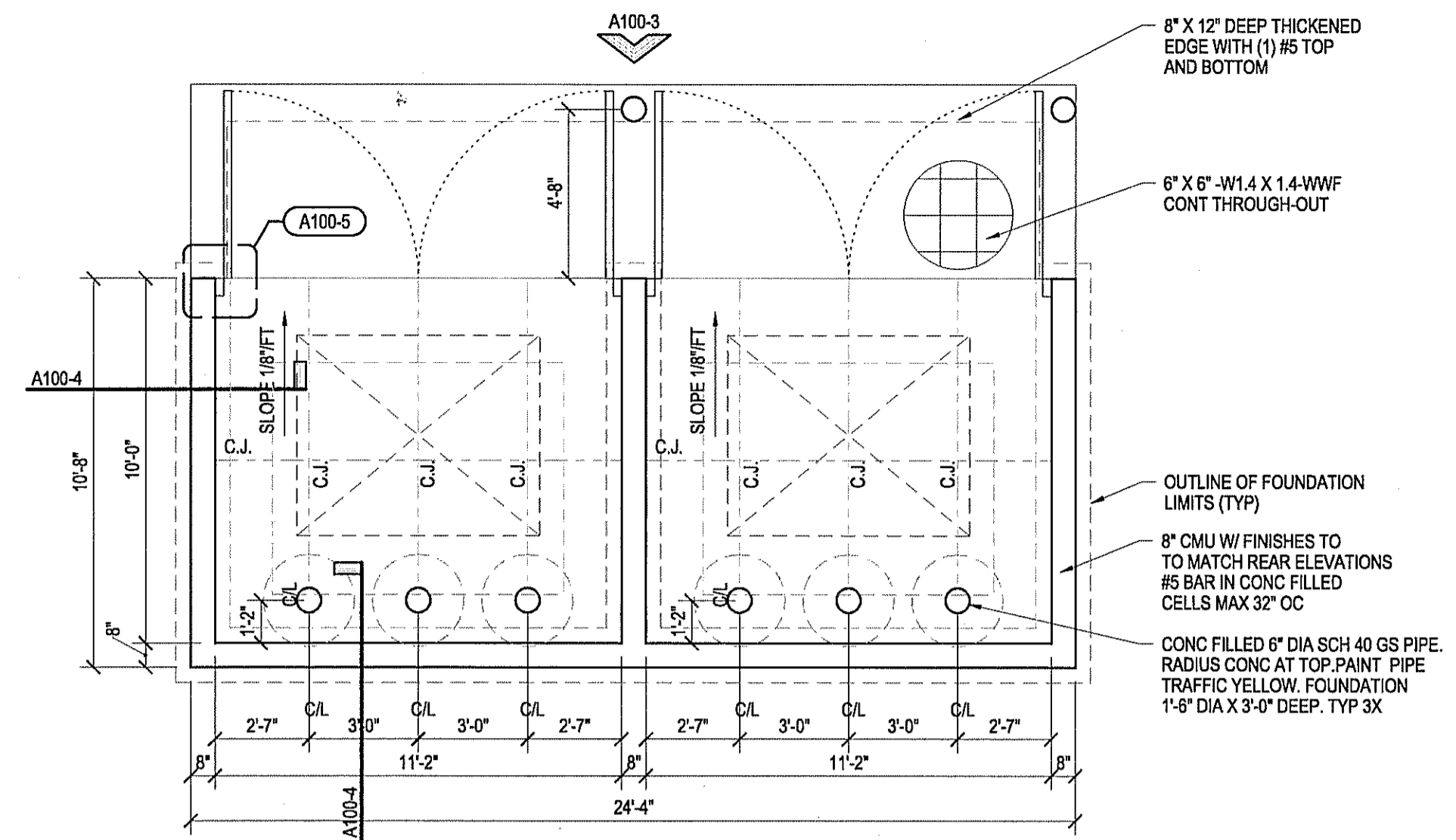
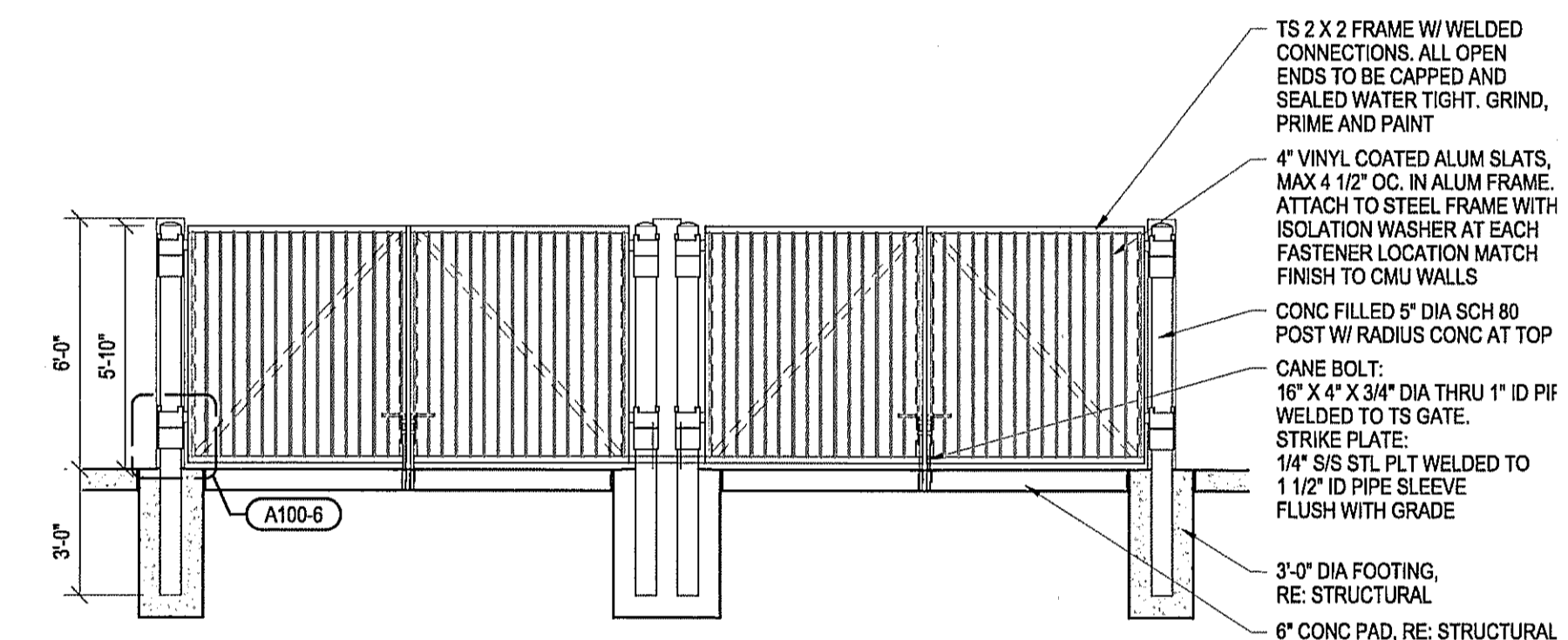


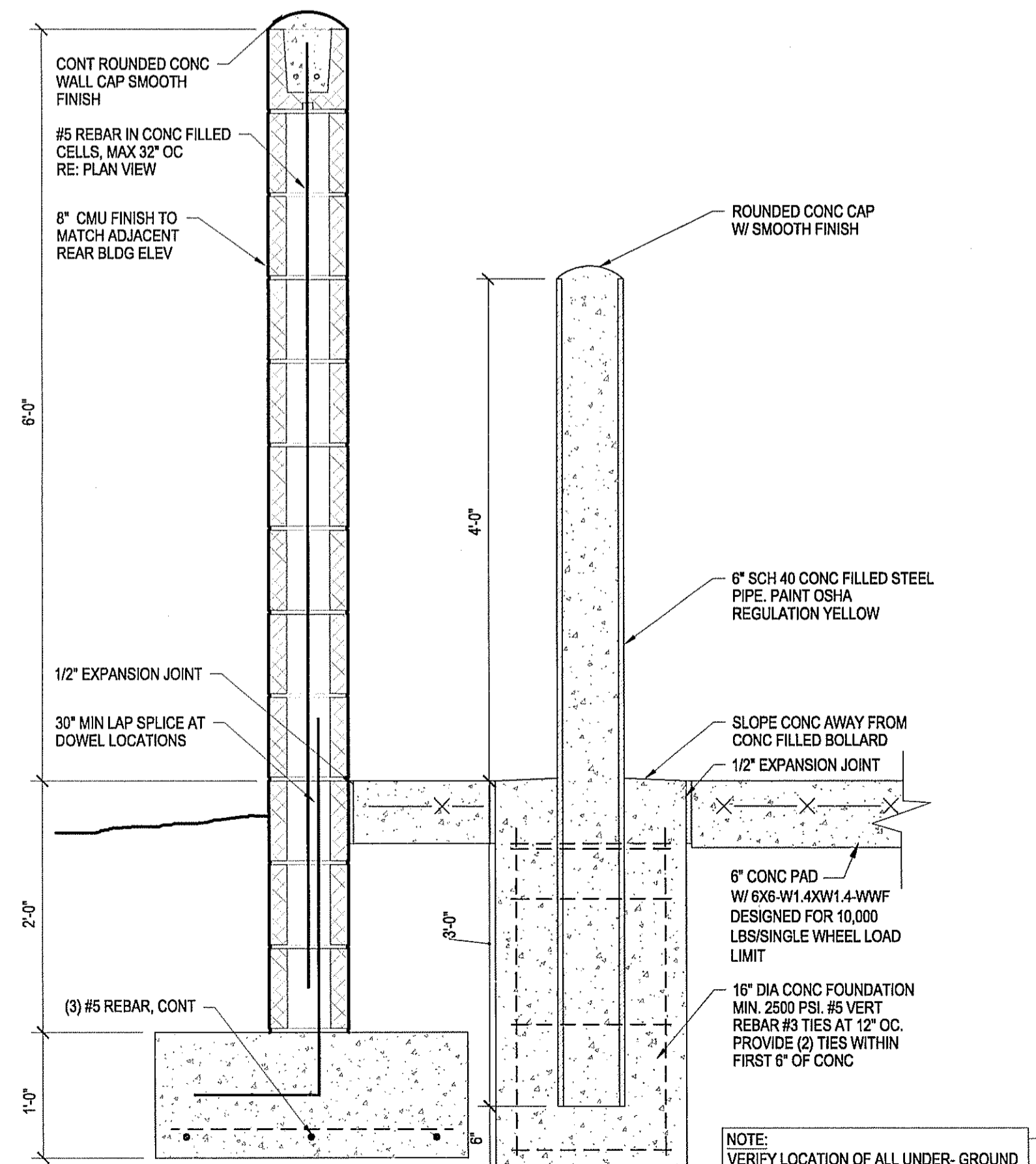
**1 Architectural Site Plan**  
Scale 1/16"=1'-0"



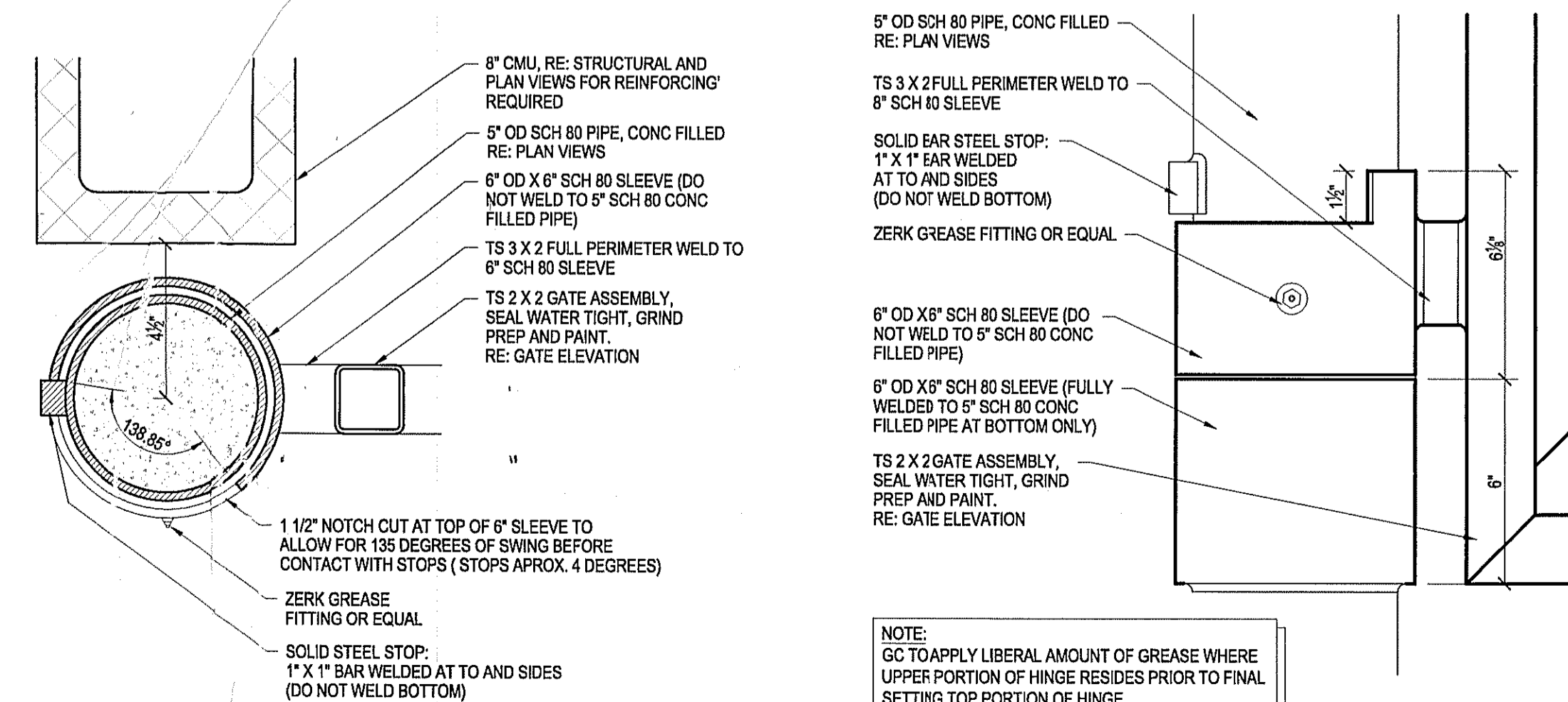
**2 Dumpster Enclosure Plan**  
Scale 1/4"=1'-0"



**3 Gate Elevation**  
Scale 1/4"=1'-0"

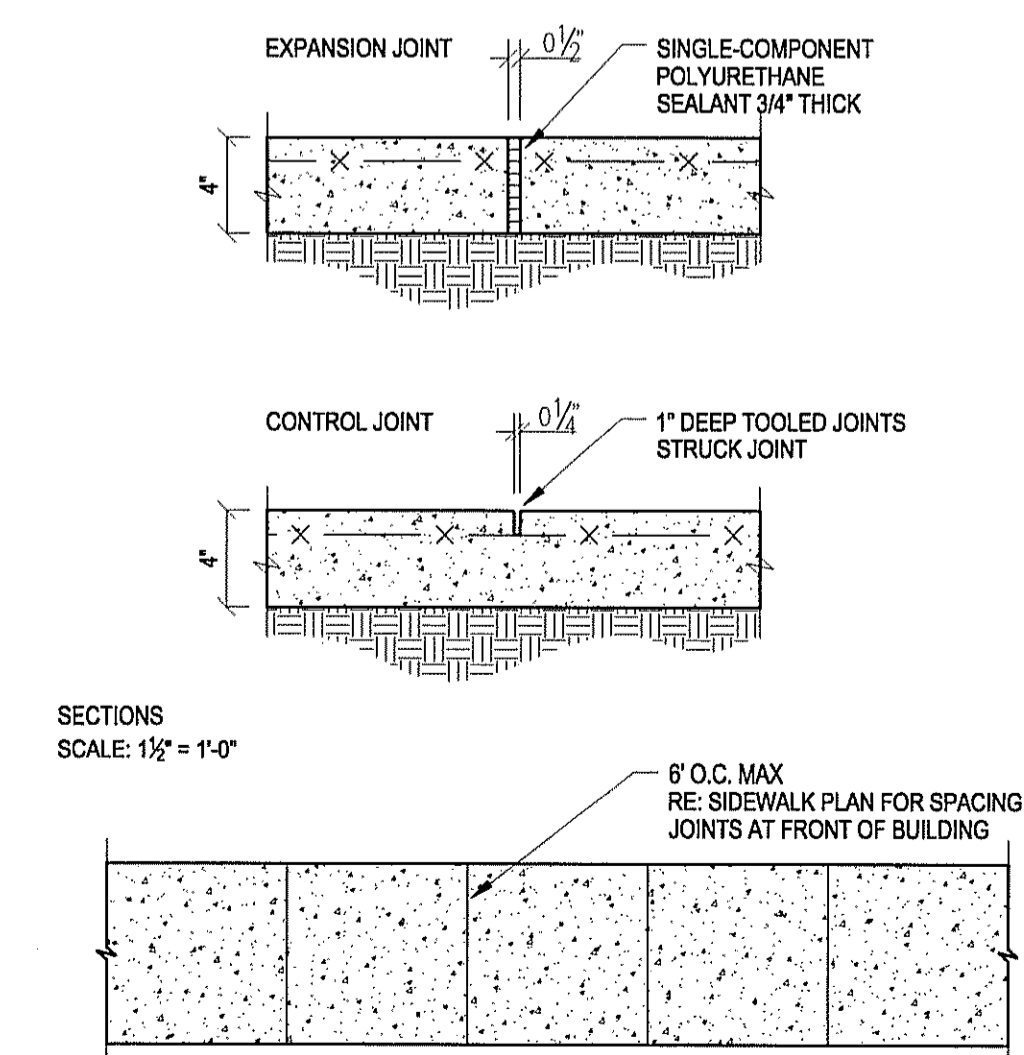


**4 Dumpster Wall Section**  
Scale 1"=1'-0"



**5 Hinge Section Detail**  
Scale 3"=1'-0"

**6 Hinge Detail**  
Scale 3"=1'-0"



**7 Sidewalk Details**  
Scale 1 1/2"=1'-0"

**Cuhaci & Peterson**  
Architects Engineers Planners  
Florida Corporate Certificate #AA 000626  
1975 Thurston Avenue, Orlando, FL 32814  
P: 407.651.9100 F: 407.681.9101  
www.csp.com

**Weingarten Realty Investors, Inc.**  
2770 E. Colonial Drive  
Orlando, FL 32803

**Outparcel 5 @ Palm Coast Landing**  
N.E.C. SR 100 and Belle Terre Parkway  
Palm Coast, Florida

PROJECT NO.	206650
DATE	08/28/08
DRAWN	CD/EI
CHECKED	JEI
RELEASE	
CLIENT NAME	Weingarten Realty Investors, Inc.
PROJECT TITLE	Outparcel 5 @ Palm Coast Landing
SHEET TITLE	Architectural Site Plan & Details
DESIGNED BY	GREGORY SIMPSON
DATE	FL 1/16/02

**A100**