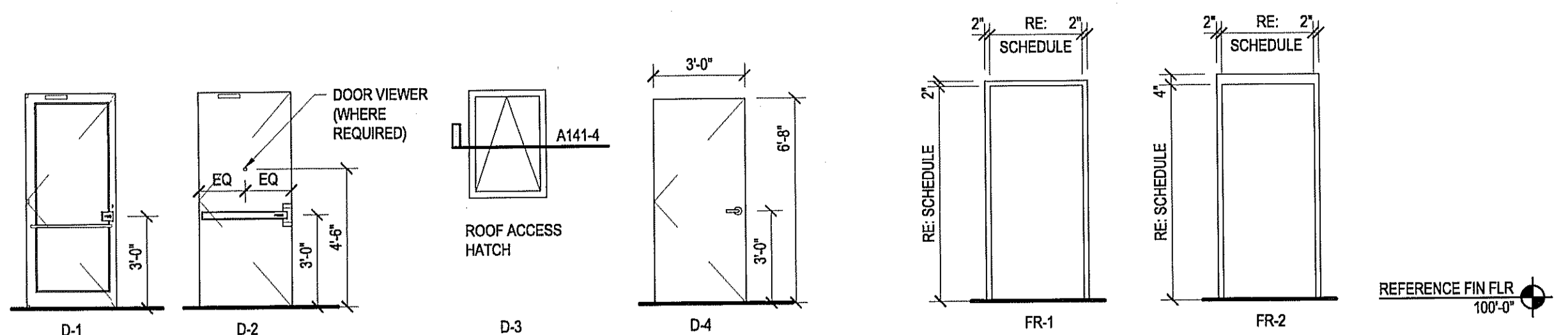


Door & Frame Schedule																
DOORS				FRAME			DETAILS			GLASS			DOOR & FRAME ASSEMBLY U/L LABEL	HARDWARE SET	REMARKS	MARK
MARK	TYPE	WIDTH	HT.	MATERIAL	TYPE	MATERIAL	HEAD	JAMB	SILL	SIZE	TYPE	THICKNESS				
(100-B)	D-2	3'-0"	7'-0"	HM	FR-2	HM	RE: A602-3	RE: A602-3	RE: A602-3	-	-	-	-	2	INSTALL PER MIAMI - DADE NOA #05-0809.02	(100-B)
(100-D)	D-3	2'-6"	3'-0"	MFR	-	MFR	-	RE: A141-4	-	-	-	-	-	3	ROOF ACCESS HATCH, RE-SPECIFICATIONS	(100-D)
(101-A)	D-1	(PR) 3'-0"	7'-0"	ALUMINUM	-	ALUMINUM	RE: A602-1	RE: A602-1	RE: A602-1	FULL	T	PER NOA	-	1	INSTALL PER MIAMI - DADE NOA #04-0123.02	(101-A)
(101-B)	D-2	4'-0"	7'-0"	HM	FR-2	HM	RE: A602-3	RE: A602-3	RE: A602-3	-	-	-	-	2	INSTALL PER MIAMI - DADE NOA #05-0809.02	(101-B)
(102-A)	D-1	3'-0"	7'-0"	ALUMINUM	-	ALUMINUM	RE: A602-1	RE: A602-1	RE: A602-1	FULL	T	PER NOA	-	1	INSTALL PER MIAMI - DADE NOA #04-0123.02	(102-A)
(102-B)	D-2	3'-0"	7'-0"	HM	FR-2	HM	RE: A602-3	RE: A602-3	RE: A602-3	-	-	-	-	2	INSTALL PER MIAMI - DADE NOA #05-0809.02	(102-B)
(103-A)	D-1	3'-0"	7'-0"	ALUMINUM	-	ALUMINUM	RE: A602-1	RE: A602-1	RE: A602-1	FULL	T	PER NOA	-	1	INSTALL PER MIAMI - DADE NOA #04-0123.02	(103-A)
(103-B)	D-2	3'-0"	7'-0"	HM	FR-2	HM	RE: A602-3	RE: A602-3	RE: A602-3	-	-	-	-	2	INSTALL PER MIAMI - DADE NOA #05-0809.02	(103-B)
(103-C)	D-4	3'-0"	6'-8"	HC WOOD	FR-2	WOOD	-	-	-	-	-	-	-	2	PRE HUNG	(103-C)
(104-A)	D-1	3'-0"	7'-0"	ALUMINUM	-	ALUMINUM	RE: A602-1	RE: A602-1	RE: A602-1	FULL	T	PER NOA	-	1	INSTALL PER MIAMI - DADE NOA #04-0123.02	(104-A)
(104-B)	D-2	3'-0"	7'-0"	HM	FR-2	HM	RE: A602-3	RE: A602-3	RE: A602-3	-	-	-	-	2	INSTALL PER MIAMI - DADE NOA #05-0809.02	(104-B)
(104-C)	D-4	3'-0"	6'-8"	HC WOOD	FR-2	WOOD	-	-	-	-	-	-	-	2	PRE HUNG	(104-C)
(105-A)	D-1	(PR) 3'-0"	7'-0"	ALUMINUM	-	ALUMINUM	RE: A602-1	RE: A602-1	RE: A602-1	FULL	T	PER NOA	-	1	INSTALL PER MIAMI - DADE NOA #04-0123.02	(105-A)
(105-B)	D-2	3'-0"	7'-0"	HM	FR-2	HM	RE: A602-3	RE: A602-3	RE: A602-3	-	-	-	-	2	INSTALL PER MIAMI - DADE NOA #05-0809.02	(105-B)



**Locksets and Keying:**  
SEE SPECS FOR INFORMATION

**Hardware Notes:**

- ADJUST ALL CLOSERS TO A 5 LB. MAX. OPENING FORCE.
- CONTRACTOR TO SUBMIT TYPE WRITTEN SHOP DRAWINGS AND PRODUCT LITERATURE FOR ALL DOORS AND HARDWARE SPECIFIED PREPARED BY A LICENSED AND CERTIFIED CONSULTANT FOR ARCHITECTS APPROVAL.
- ALL EXTERIOR HOLLOW CORE METAL DOORS ARE TO BE INSULATED. DOOR AND FRAME TO BE SHOP PRIMED AND PAINTED.
- ALL DOORS AND HARDWARE TO COMPLY WITH N.F.P.A. 101-5.2.1.5.

- ALL DOORS AND HARDWARE TO COMPLY WITH THE FLORIDA ACCESSIBILITY CODE AND THE A.D.A. FEDERAL REGULATION CODES, UTILIZING A LEVER LATCH OR LOCKSET.
- SEE SPECS FOR ADDITIONAL INFORMATION.
- BEST LOCK ONLY.
- ALL REAR DOORS KEYPED ALIKE.

**Hardware Schedule:**

- HARDWARE SET #1: (DOUBLE ENTRANCE DOORS)**
- 2 EA SET TOP & BOTTOM OFFSET PIVOT HINGES
  - 2 EA INTERMEDIATE OFFSET PIVOT HINGE
  - 2 EA PUSH BAR
  - 2 EA FULL HANDLE
  - 1 EA CYLINDER - 7 PIN (MORTISE)
  - 1 4" (ADA) SADDLE THRESHOLD (FULL WIDTH OF OPENING)
  - 1 EA SEAL AIR WEATHERING SYSTEM AND EPDM BLADE SURFACED ATTACHED SWEEP STRIP
  - 2 EA CLOSER

**HARDWARE SET #2: (SINGLE REAR EXIT DOORS)**

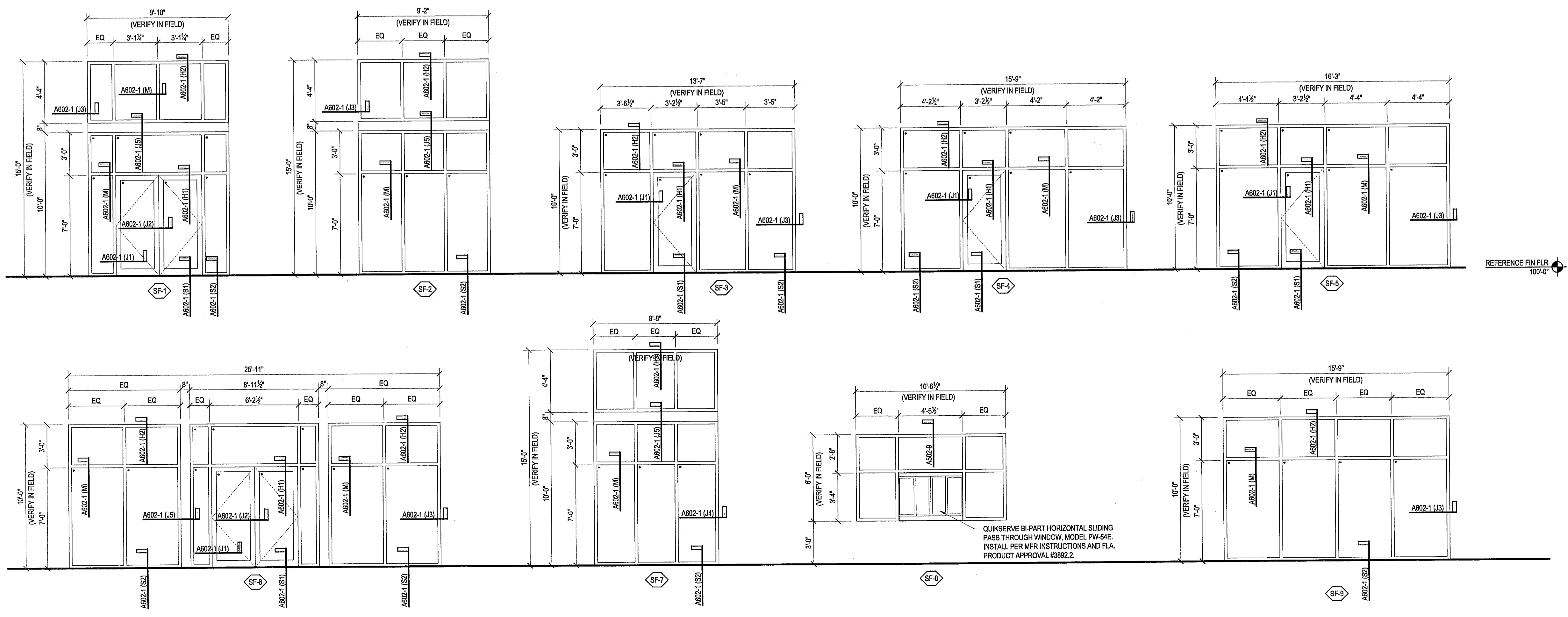
- 1 PR HAGER 4 1/2" x 4 1/2" BUTT FULL MORTISE HINGES NO. B91191 FINISH 26D
- 1 EA CLOSER - LCN NO. 1460 FINISH US 26D MOUNTED INSIDE OF ROOM
- 1 EA REM PANIC BAR WITH EXTERIOR COVER PLATE
- 1 SET FULL WEATHERSTRIP (ENTIRE PERIMETER OF OPENING)
- 1 EA BRUSH DOOR SWEEP
- 1 EA ALUMINUM THRESHOLD (FULL WIDTH OF OPENING)
- 1 EA LATCH GUARD PLATE

**HARDWARE SET #4: (RESTROOM DOOR)**

- (1 1/2") PAIR HAGER 4 1/2" x 4 1/2" BUTT FULL MORTISE HINGES NO. 1191 FINISH 26D
- (3) SILENCERS
- (1) LOCKSET SCHLAGE AL SERIES "SATURN" FINISH 626 PRIVACY LOCK
- (1) CLOSER - LCN NO. 1460 FINISH US26D MOUNTED IN ROOM
- (1) WALL STOP

**HARDWARE SET #3: (ROOF HATCH)**

- 1 PADLOCK - MASTER LOCK (OR APPROVED EQUAL)



**Cuhaci & Peterson**  
Architects Engineers Planners  
Florida Corporate Certificate #A.C. 0000256  
1925 Progress Avenue, Orlando, FL 32814  
Ph: 407.661.9100 - Fax: 407.661.9101  
www.cpe.com

---

**Weingarten Realty Investors, Inc.**  
CLIENT NAME

**Outparcel 5 @ Palm Coast Landing**  
PROJECT NAME  
N.E.C. SK 100 and Belle Terre Parkway  
Palm Coast, Florida

**Door Schedule & Storefront Elevations**  
SHEET TITLE

GREGORY SIMPSON  
FL # 18922

---

PROJECT NO. 208060	DATE 08/28/08	DRAWN GJM	CHECKED EJ
RELEASE			

A601