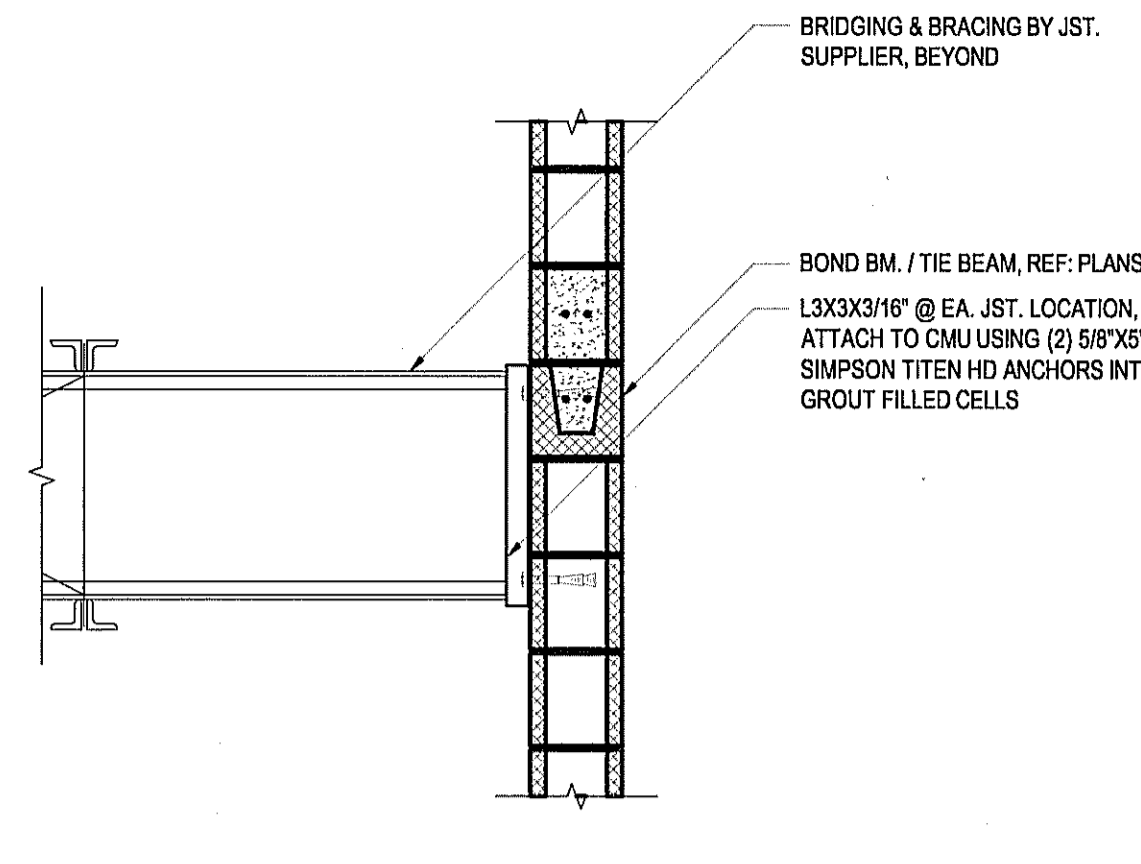
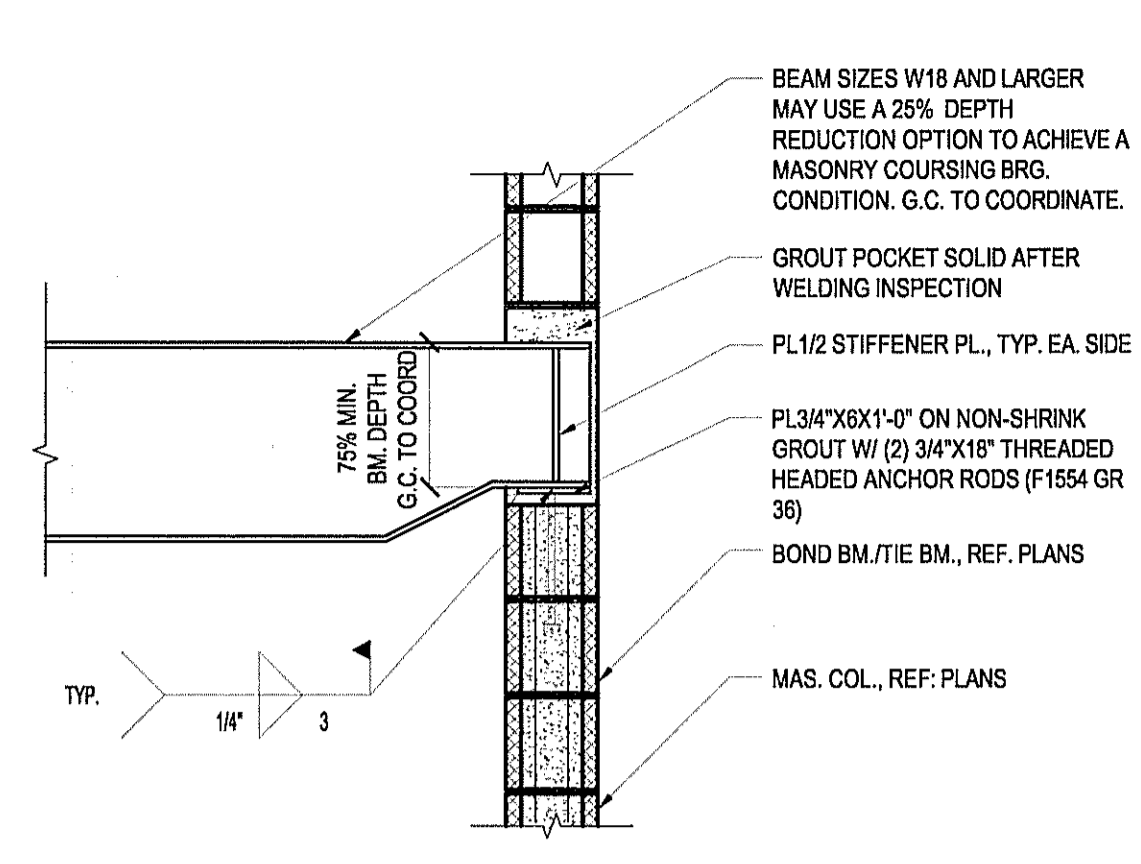


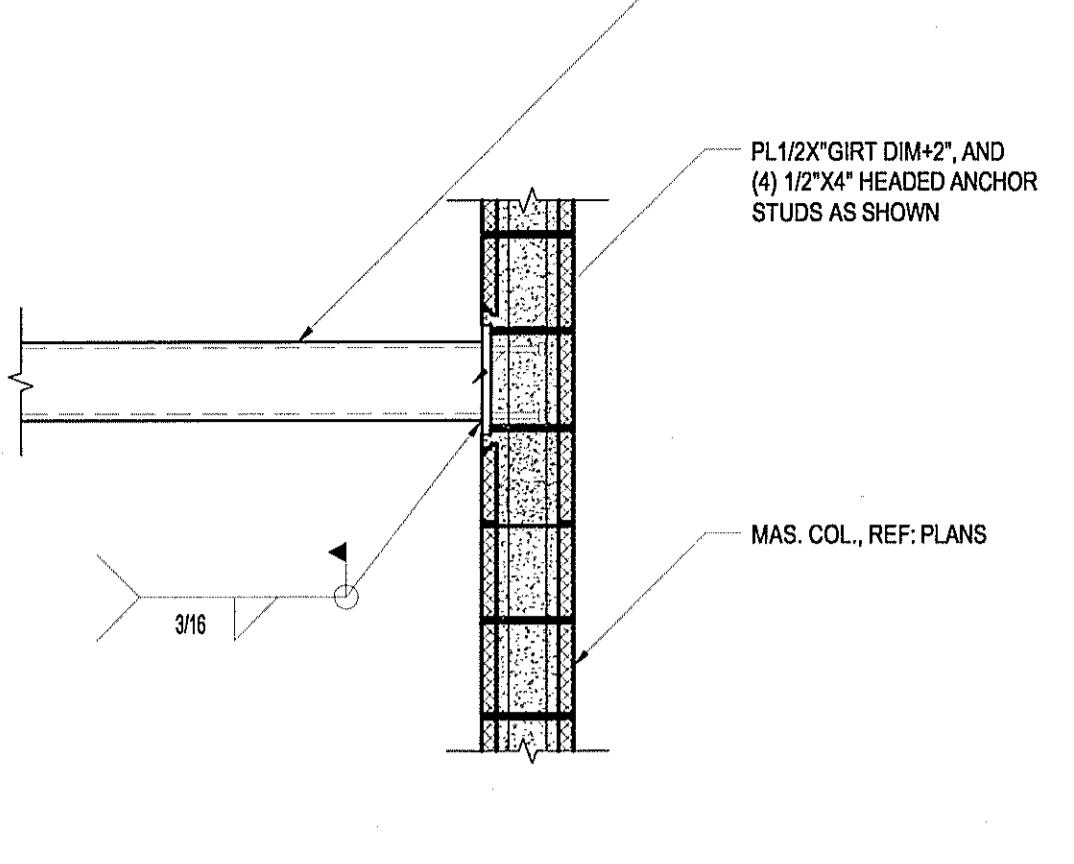
1 JOIST BEARING AT CMU / CONC.
SCALE: 3/4"=1'-0"
REF: FRAMING PLAN



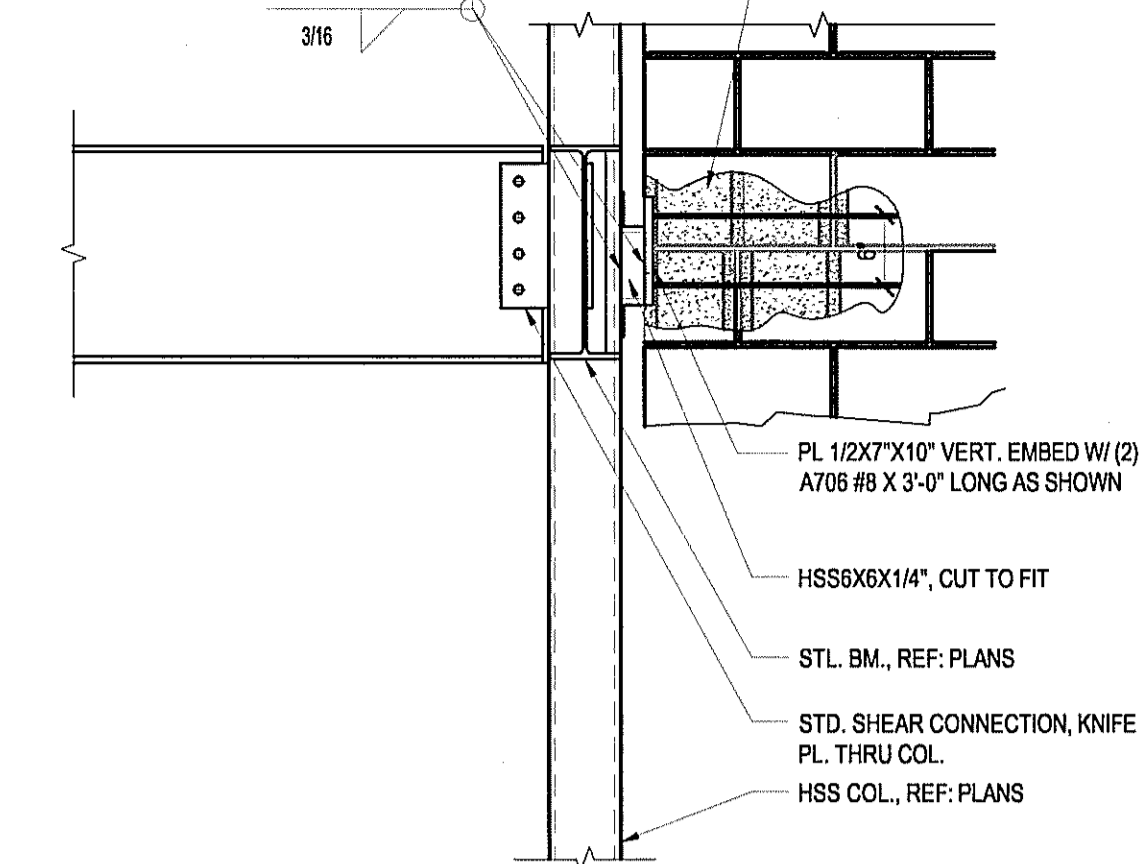
2 JOIST BRIDGING AT CMU / CONC.
SCALE: 3/4"=1'-0"
REF: FRAMING PLAN



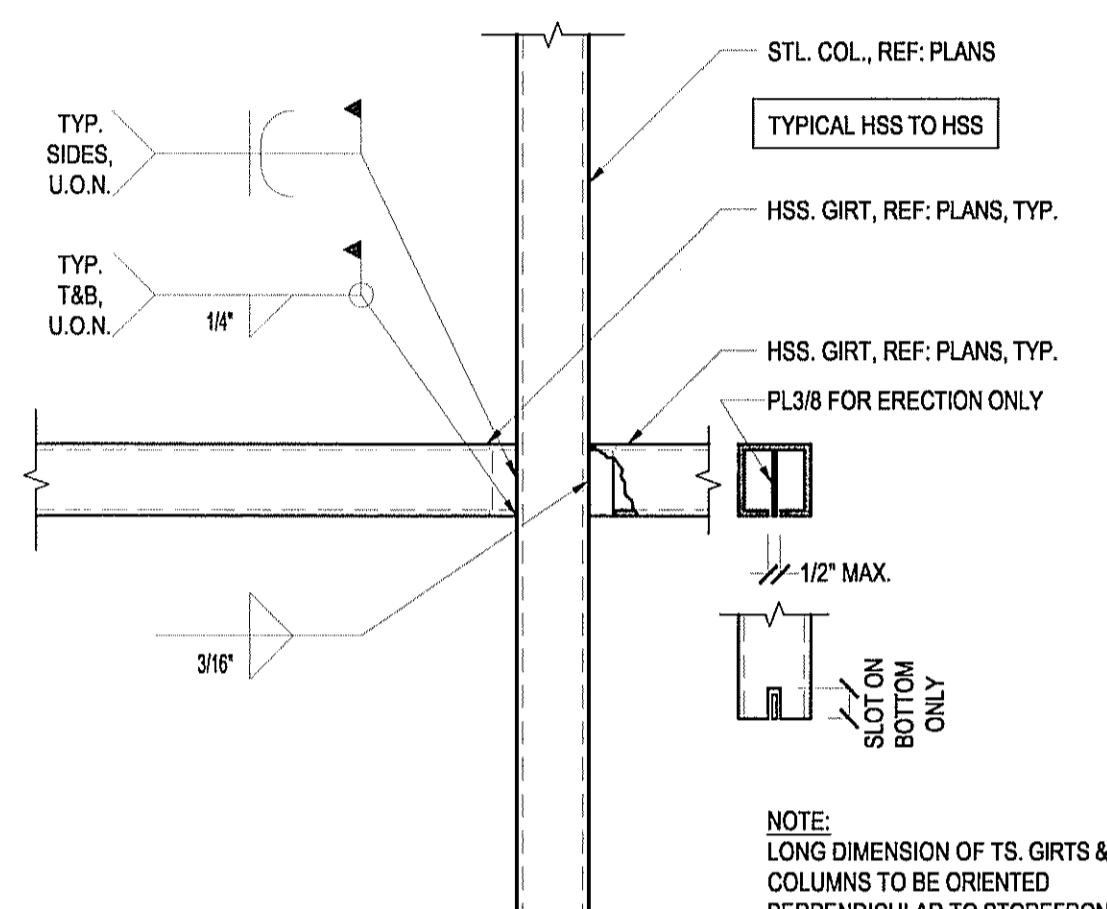
3 FRAMING DETAIL
SCALE: 3/4"=1'-0"
REF: FRAMING PLAN



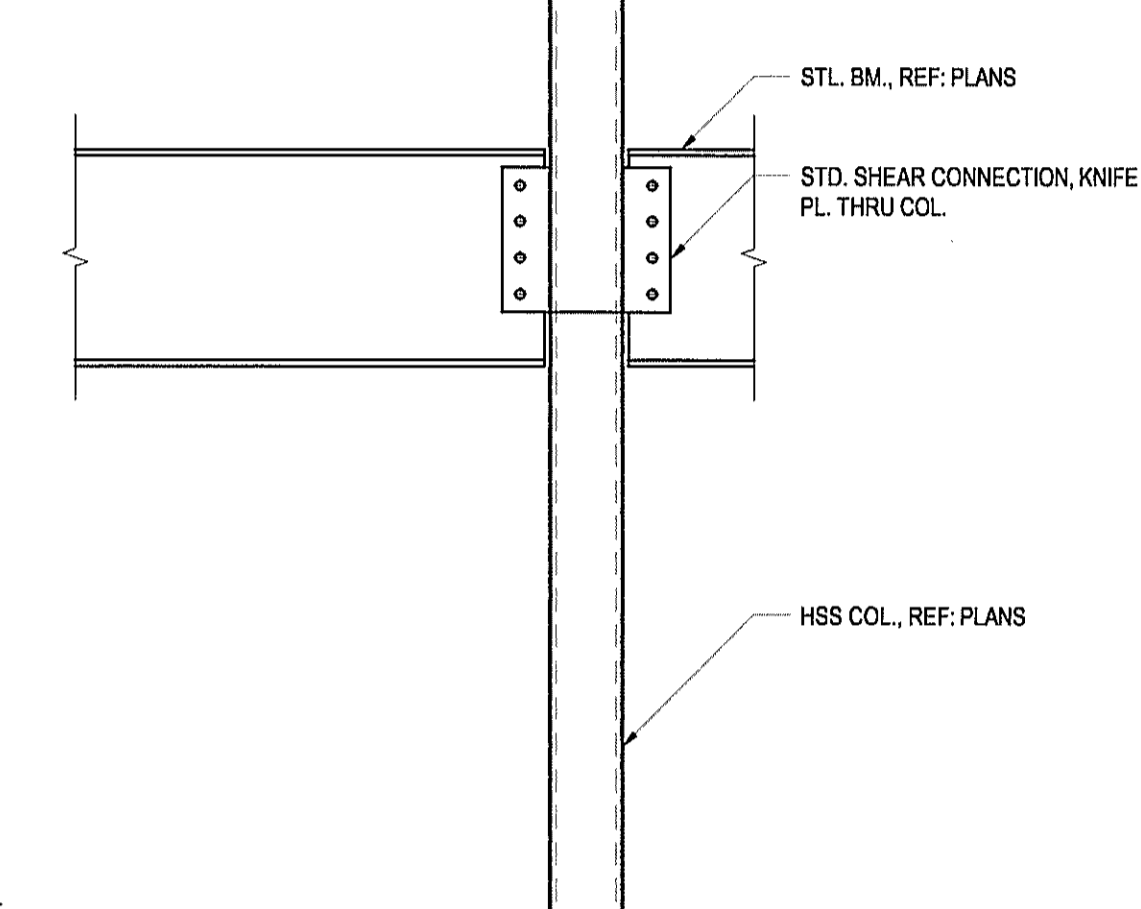
4 FRAMING DETAIL
SCALE: 3/4"=1'-0"
REF: FRAMING PLAN



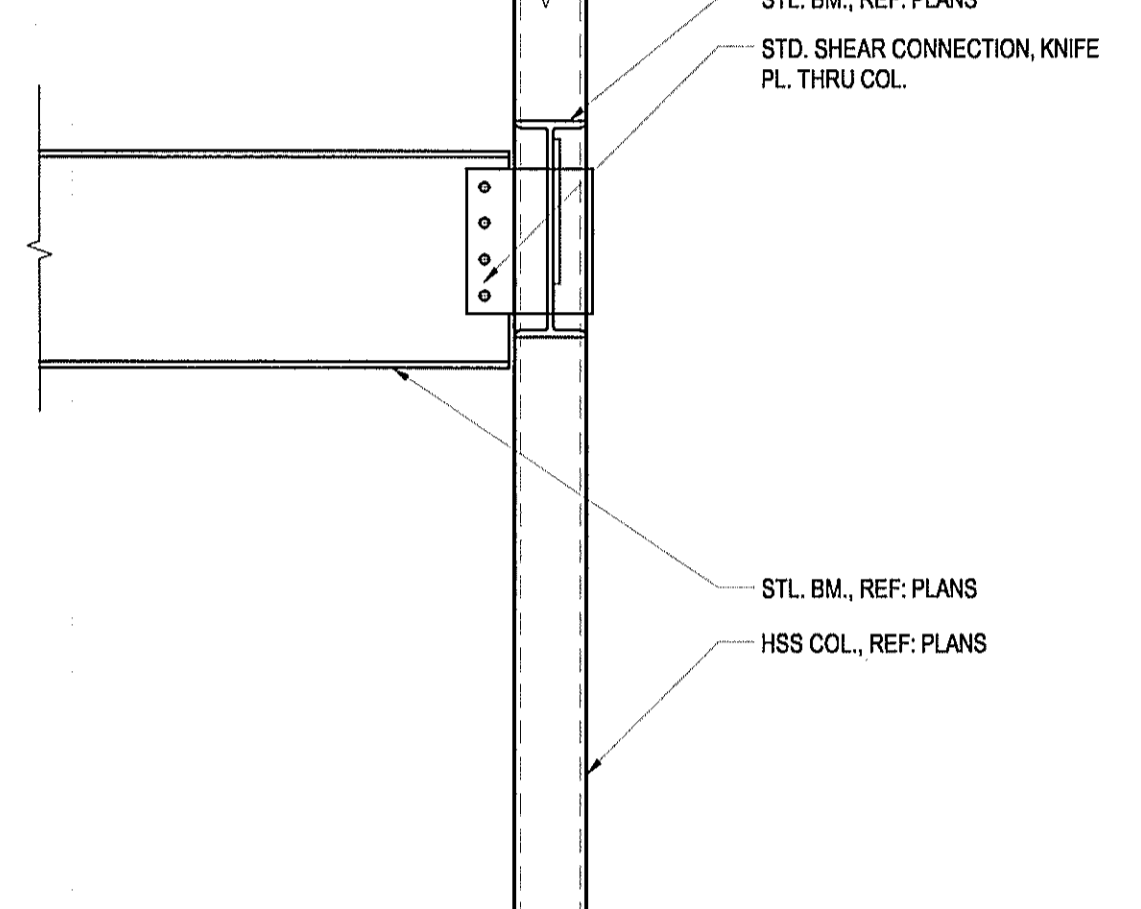
5 FRAMING DETAIL
SCALE: 3/4"=1'-0"
REF: FRAMING PLAN



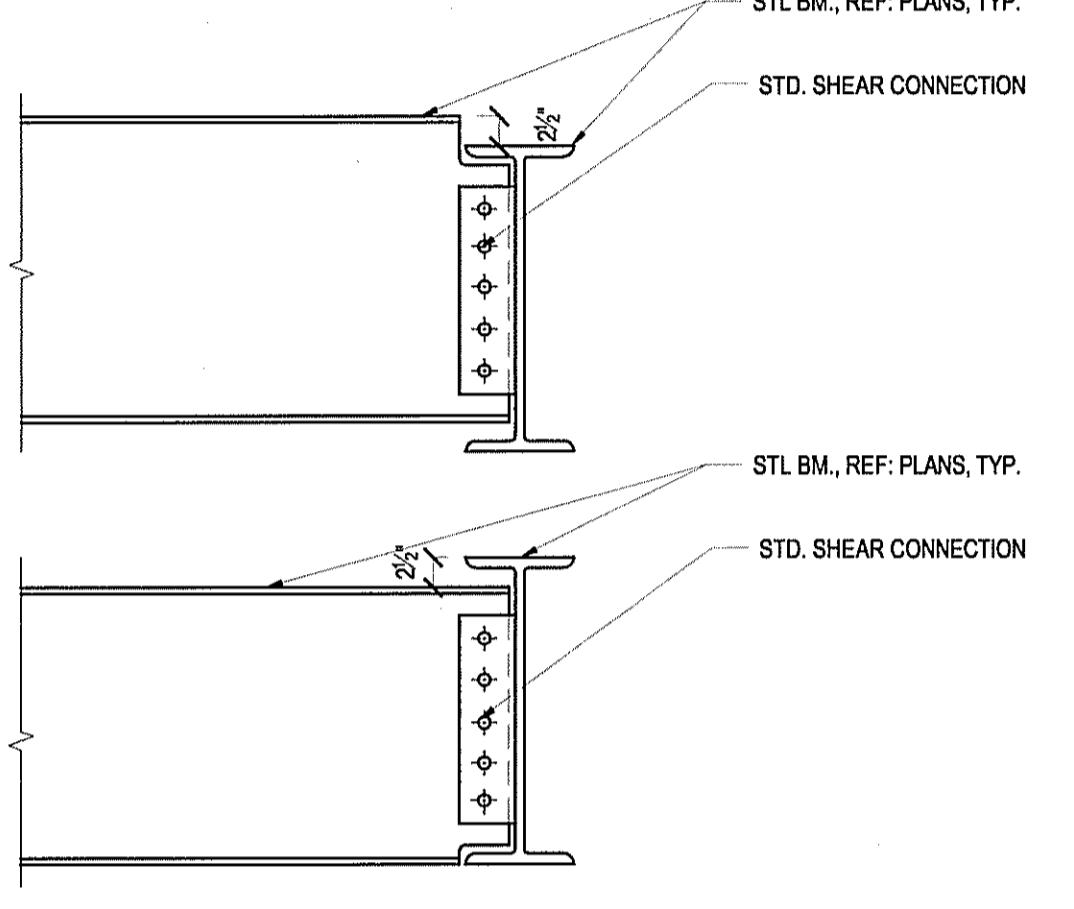
6 FRAMING DETAIL
SCALE: 3/4"=1'-0"
REF: FRAMING PLAN



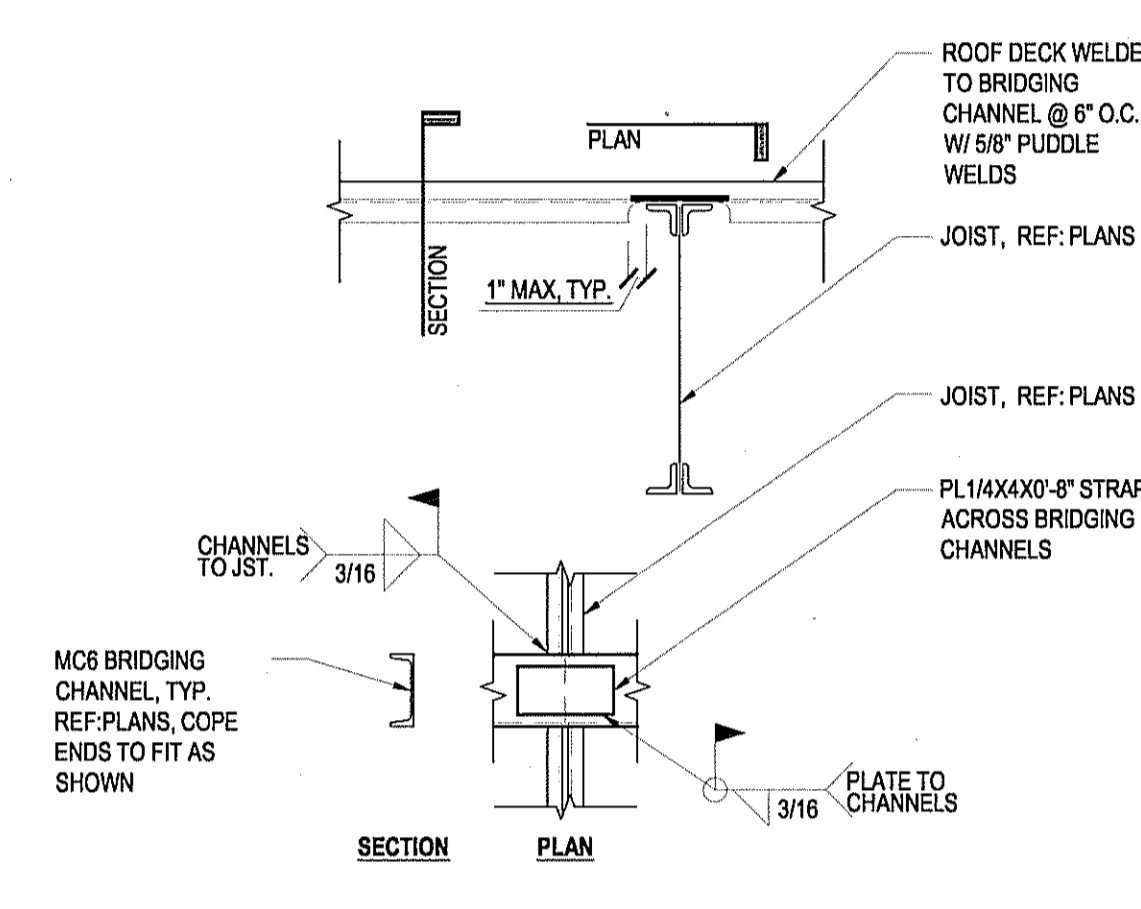
7 FRAMING DETAIL
SCALE: 3/4"=1'-0"
REF: FRAMING PLAN



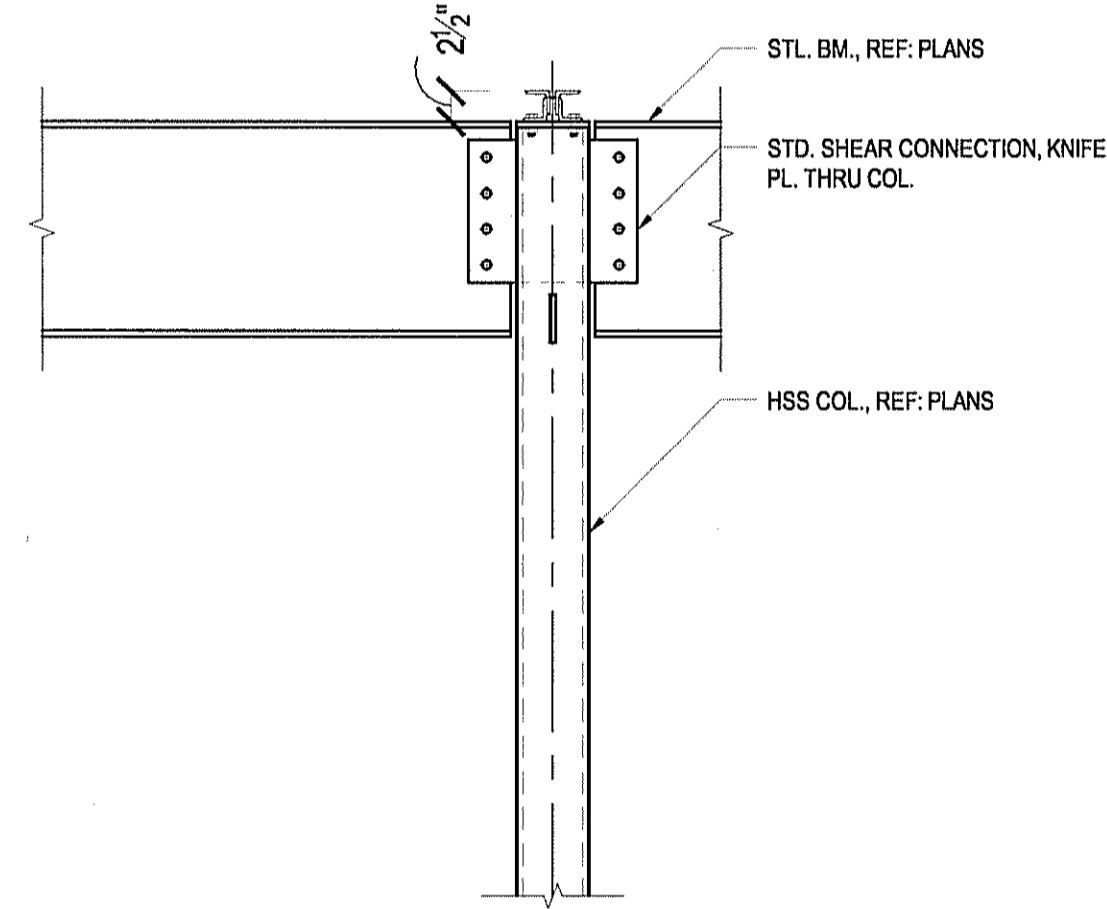
8 FRAMING DETAIL
SCALE: 3/4"=1'-0"
REF: FRAMING PLAN



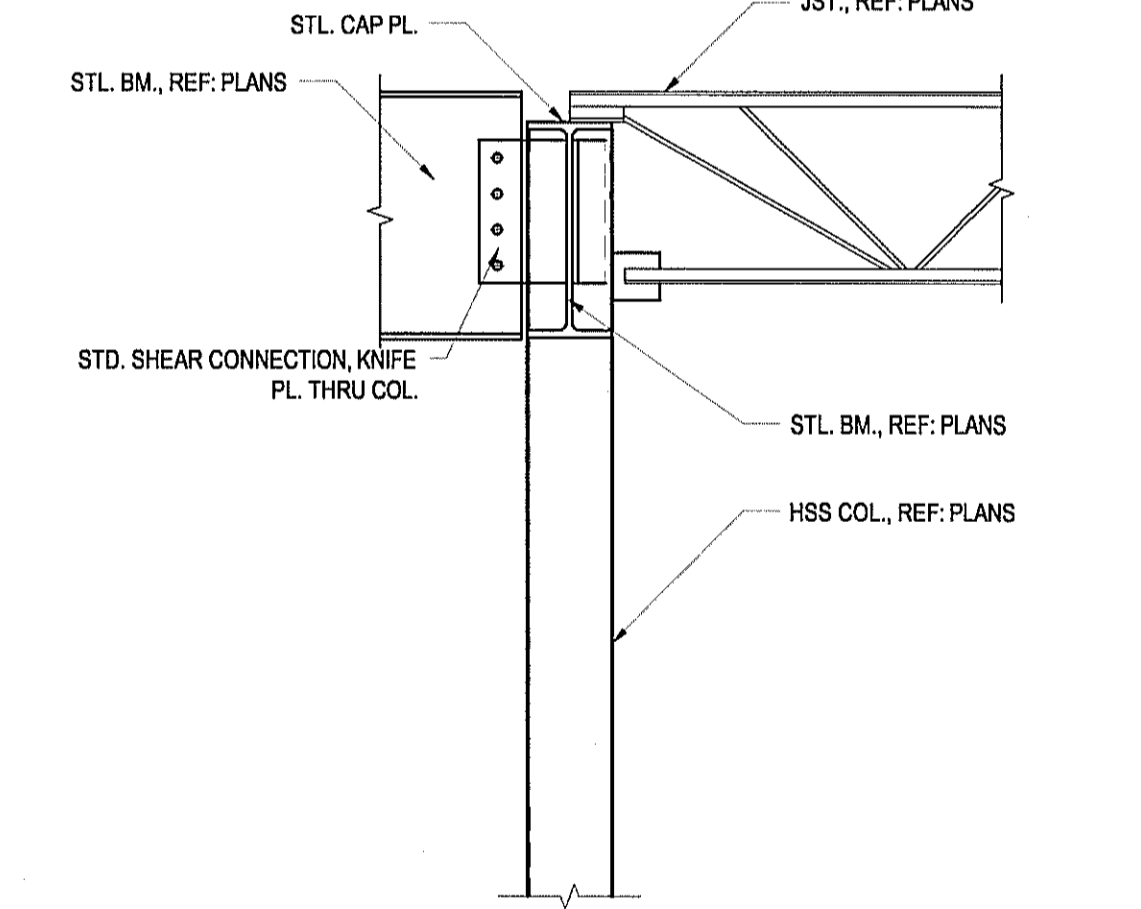
9 FRAMING DETAIL
SCALE: 3/4"=1'-0"
REF: FRAMING PLAN



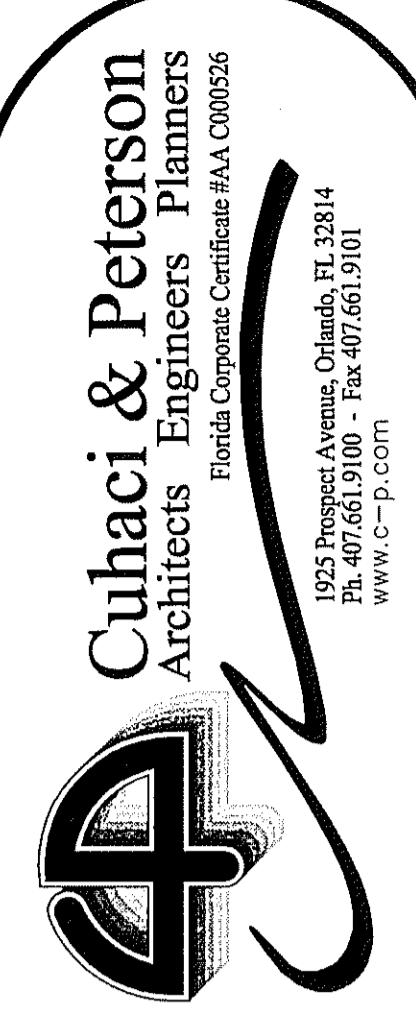
10 FRAMING DETAIL
SCALE: 3/4"=1'-0"
REF: FRAMING PLAN



11 FRAMING DETAIL
SCALE: 3/4"=1'-0"
REF: FRAMING PLAN



12 FRAMING DETAIL
SCALE: 3/4"=1'-0"
REF: FRAMING PLAN



Cuhaci & Peterson
Architects Engineers Planners
Florida Composite Certificate #AA 000826
1925 Prospect Avenue, Orlando, FL 32814
Ph: 407.661.9100 • Fax: 407.661.9101
www.c-p.com

PROJECT NAME
Outparcel 5 @ Palm Coast Landing
N.E.C. Sp 100 and Belle Terre Parkway
Palm Coast, Florida

CLIENT NAME
Weingarten Realty Investors, Inc.
2720 E. Colonial Drive
Orlando, FL 32803

PROJECT NAME
Outparcel 5 @ Palm Coast Landing
N.E.C. Sp 100 and Belle Terre Parkway
Palm Coast, Florida

SHEET TITLE
FRAMING DETAILS

PROJECT NO.
2888B

DATE
08/28/08

DRAWN
JR

CHECKED
BR

RELEASE

SHEET NO.
1

TOTAL SHEETS
1

BRETT RYLANDS
P.L.P. 55938

S502