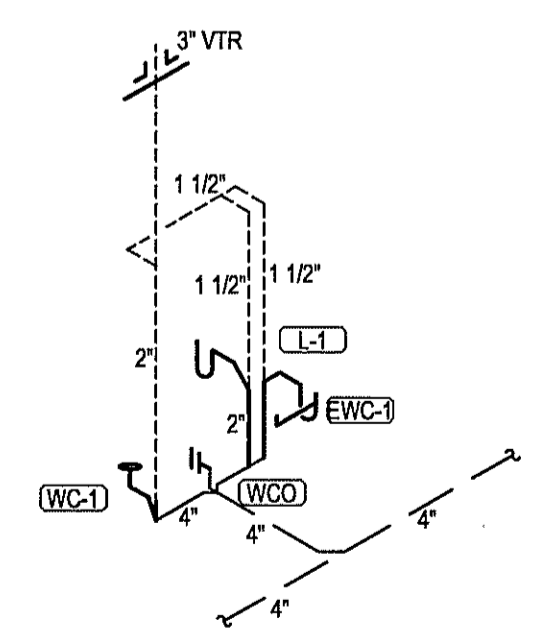
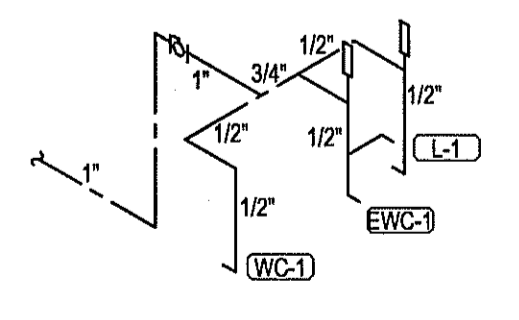


Plumbing Floor Plan
Scale: 1/8"=1'-0"



1 Sanitary & Vent Riser
Scale: NTS



2 Domestic Water Riser
Scale: NTS

- PLUMBING DRAWING NOTES:**
- 1 1" DOMESTIC WATER SEE CIVIL DRAWING FOR BACKFLOW, METER AND CONTINUATION.
 - 2 1-1/2" DOMESTIC WATER SEE CIVIL DRAWING FOR BACKFLOW, METER AND CONTINUATION.
 - 3 VALVE AND CAP WATER LINE 18" A.F.F. FOR FUTURE TENANT CONNECTION.
 - 4 SEE CIVIL DRAWINGS FOR CONTINUATION TO GREASE INTERCEPTOR, SEE TENANT IMPROVEMENT PLAN FOR SIZING AND CALCULATIONS.
 - 5 STUB UP 4" GREASE LINE AND CAP FOR FUTURE TENANT CONNECTION.
 - 6 4" SANITARY SEE CIVIL DRAWING FOR CONTINUATION.
 - 7 STUB UP 4" SANITARY AND CAP FOR FUTURE TENANT CONNECTION.
 - 8 SEE CIVIL DRAWINGS FOR CONTINUATION, OWNER TO COORDINATE UNDERGROUND PROPANE TANK.
 - 9 VALVE AND CAP WATER LINE IN CEILING SPACE FOR FUTURE TENANT CONNECTION.

COPYRIGHT © All rights, plans, specifications, computer files, field notes, sales and other documents are trademarks of the author prepared by Cuhaci & Peterson, Architects, Engineers, Planners, Inc. (C.E.P.), as indicated on the drawings and other documents. Any use or reproduction of this document without the written permission from C.E.P. is a violation of Florida copyright laws.

Cuhaci & Peterson
Architects Engineers Planners
Florida Corporate Certificate #AA 0006526

9925 Progress Avenue, Orlando, FL 32814
Phone: 407.261.1910 - Fax: 407.261.1911
www.c&p.com

Weingarten Realty Investors, Inc.
2720 E. Colonial Drive
Orlando, FL 32803

PROJECT NAME	Outparcel 5 @ Palm Coast Landing N.E.C. SR 100 and Belle Terre Parkway Palm Coast, Florida
CLIENT NAME	Weingarten Realty Investors, Inc.
SHEET TITLE	Plumbing Floor Plan
PROJECT NO.	208950
DATE	08/28/08
DRAWN	TAB
CHECKED	JFK
RELEASE	

JOSEPH F. KEENE
FL # 60022

P101