

DOOR SCHEDULES

Description	Nominal Size			DOOR			FRAME		HARDWARE	GENERAL
	Width	Height	Thickness	Operation	Type	Finish	Type	Finish	Set	
101A	40"	70"	1 3/4"	Swing Simple	D	-	A	MTL	-	ELIASON SINGLE DUAL ACTING DOOR
101B	60"	70"	1 3/4"	Swing Bi-part	F	PT	A	MTL	5	ADD KICKPLATE & PEEP HOLE
103A	120"	70"	1 3/4"	Slider	E	ALUM	A	ALUM	-	
103B	30"	70"	1 3/4"	Swing Simple	C	PT	A	PT	1	METAL DOOR
104	30"	70"	1 3/4"	Swing Simple	B	PT	A	PT	2	
105	30"	70"	1 3/4"	Swing Simple	B	PT	A	PT	2	
106	28"	70"	1 3/4"	Swing Simple	B	PT	A	PT	3	
107	30"	70"	1 3/4"	Swing Simple	A	PT	A	PT	3	METAL DOOR

DOOR NOTES & REMARKS

DOOR DIMENSIONING: (THE DOOR SIZE SHALL BE GOVERNED BY THE DOOR SCHEDULE)
 1. ALL DOORS IN A CMU WALL ARE DIMENSIONED TO THE ROUGH OPENING.
 2. ALL DOOR IN A FRAMED PARTITION WALL ARE TO BE LOCATED BY ONE OF THE FOLLOWING:
 A. IF THE DOOR IS LOCATED CLOSE TO ANOTHER WALL AT A RIGHT ANGLE PROVIDE MIN 4" RETURN (TYP).
 B. THE DOOR IS CENTERED IN A WALL.
 C. OR AS DIMENSIONED ON THE PLAN.
 3. CONTRACTOR TO COORDINATE ALL REQUIRED ROUGH OPENINGS W/ THE DOOR MANUFACTURER.

DOOR FINISHES:
 EXTERIOR - PAINT GRADE
 INTERIOR - PAINT GRADE

NOTES:
 EXTERIOR DOORS PROVIDED ARE TO MEET THE DESIGN PRESSURE FOR OPENINGS AS SPECIFIED IN DESIGN WIND LOAD CHART PROVIDED. DOOR MANUFACTURER TO PROVIDE SHOP DRAWINGS FOR ARCHITECTS APPROVAL PRIOR TO MANUFACTURING / INSTALLING.

ALL DOORS TYPE, STYLE & HARDWARE AS SELECTED BY OWNER/DEVELOPER
 G.C. TO COORDINATE DOOR MANUFACTURERS UNIT DIMENSION WITH REQUIRED ROUGH OPENING.

CONTACT ARCHITECT IF THERE IS A DISCREPANCY BETWEEN DOOR SIZE SHOWN AND ACTUAL OPENING.

REFER TO MANUFACTURER SPECIFICATIONS FOR ALL DOOR AND FRAME REQUIREMENTS AND INSTALLATION RECOMMENDATIONS
 G.C. TO VERIFY THAT ANY DOORS TO BE REUSED ARE IN GOOD CONDITION AND MEET ALL REQUIREMENTS PER SCHEDULE.

Hardware Set Descriptions				
SET NO. 1	SET NO. 2	SET NO. 3	SET NO. 4	SET NO. 5
3 - HINGES 1 - PANIC HRDWARE 3 - SILENCERS 1 - KICKPLATE 1 - CLOSER 1 - WEATHERSTRIPPING 1 - SWEEP	3 - HINGES 1 - PRIVACY LOCK 3 - SILENCERS 1 - DOOR STOP 1 - CLOSER	3 - HINGES 1 - STOREROOM LOCK 3 - SILENCERS 1 - DOOR STOP 1 - CLOSER 1 - PEEP HOLE	3 - HINGES 1 - PASSAGE SET 3 - SILENCERS 1 - DOOR STOP 1 - CLOSER 1 - KICKPLATE	6 - HINGES 1 - PANIC HRDWARE 3 - SILENCERS 2 - KICKPLATES 1 - PEEP HOLE 1 - WEATHERSTRIPPING 2 - SWEEPS 2 - FLUSH BOLTS 1 - DBL DOOR STRIKE 1 - EXIT ALARM

HARDWARE SPECS:

- HINGES:** BALL BEARING HINGES, PBB BB81 4 1/2" X 4 1/2" FINISH, SATIN CHROME
- PASSAGE LATCH SET:** "SCHLAGE" ALIOS FINISH, SATIN CHROME
- PRIVACY LOCK SET:** "SCHLAGE" ALAOS FINISH, SATIN CHROME
- STOREROOM LOCK SET:** "SCHLAGE" AL80BD FINISH, SATIN CHROME
- PANIC HARDWARE SET:** "DETEX" V40XEB - FINISH, BLACK AND RED W/ MORTISE CYLINDER "SCHLAGE 80 - 102 FINISH, SATIN CHROME.
- CLOSER:** DORO-MATIC SC81 FINISH, ALUMINUM
- DOOR STOP:** IVES TYPE 436 FINISH, SATIN CHROME
- KICK PLATE:** HIAWATHA 10" X 34" FINISH, SATIN STAINLESS STEEL
- SILENCER:** IVES, NO. 20
- WEATHERSTRIPPING:** REESE DS75 FINISH, ALUMINUM
- SWEEP:** REESE 377 FINISH, ALUMINUM
- PEEP HOLE:** IVES 698 FINISH, SATIN CHROME
- FLUSH BOLTS:** IVES FB458 FINISH, SATIN CHROME
- DOUBLE DOOR STRIKE:** DETEX 102212-2 FINISH, BLACK
- EXIT ALARM:** DETEX EAX500 FINISH, GRAY

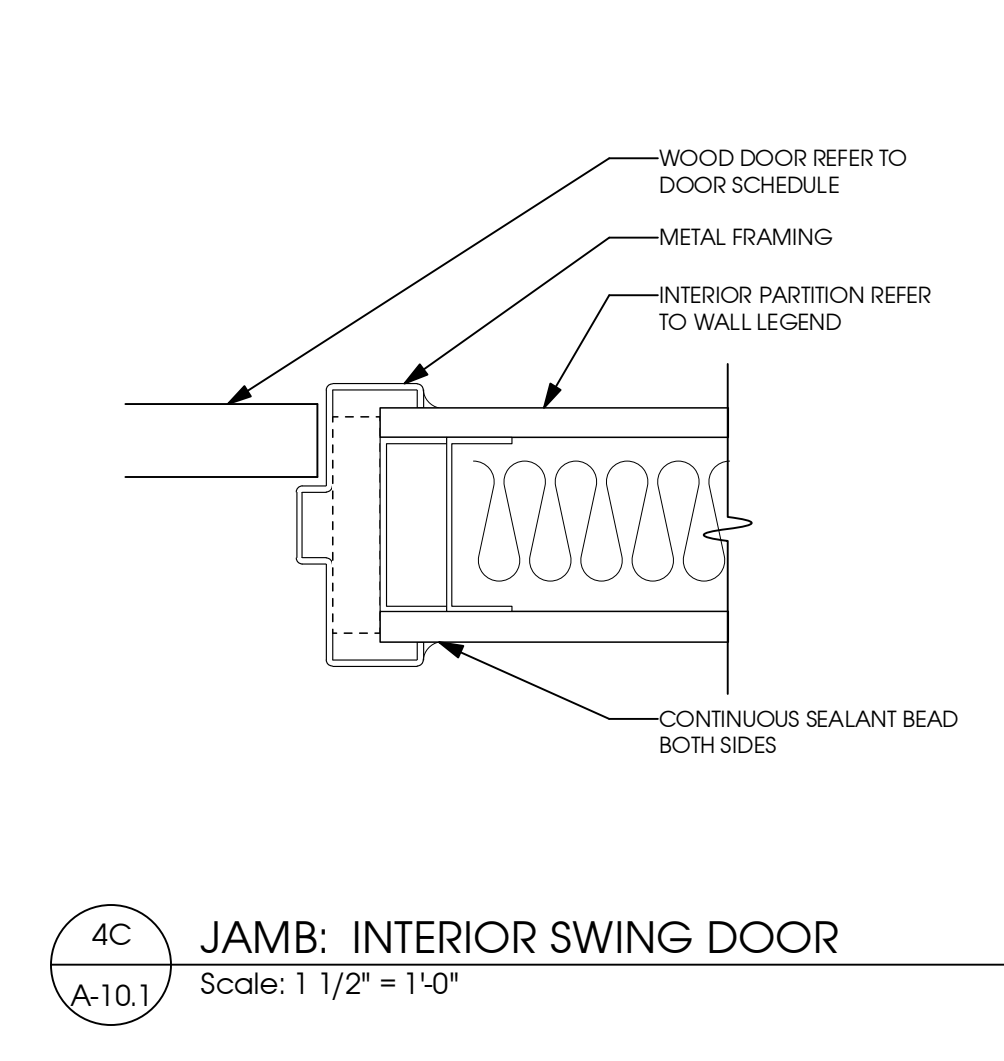
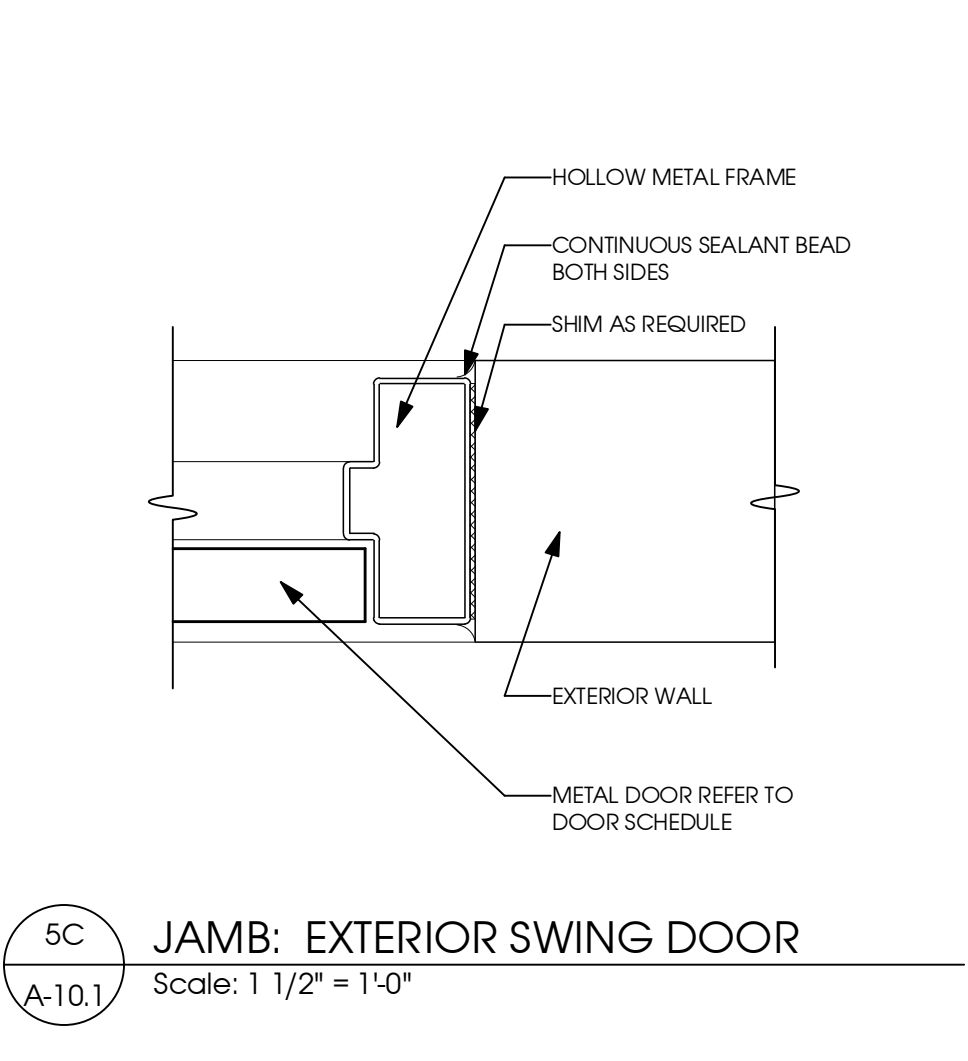
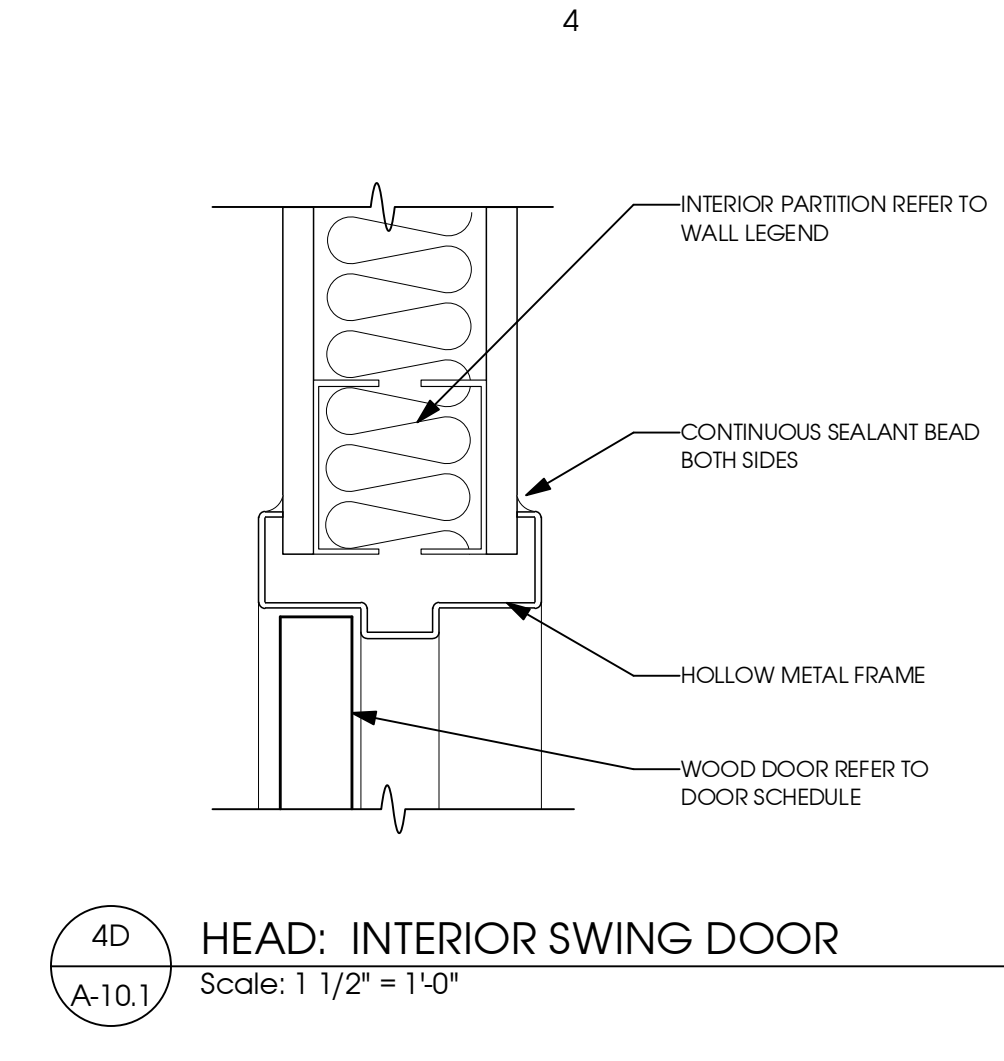
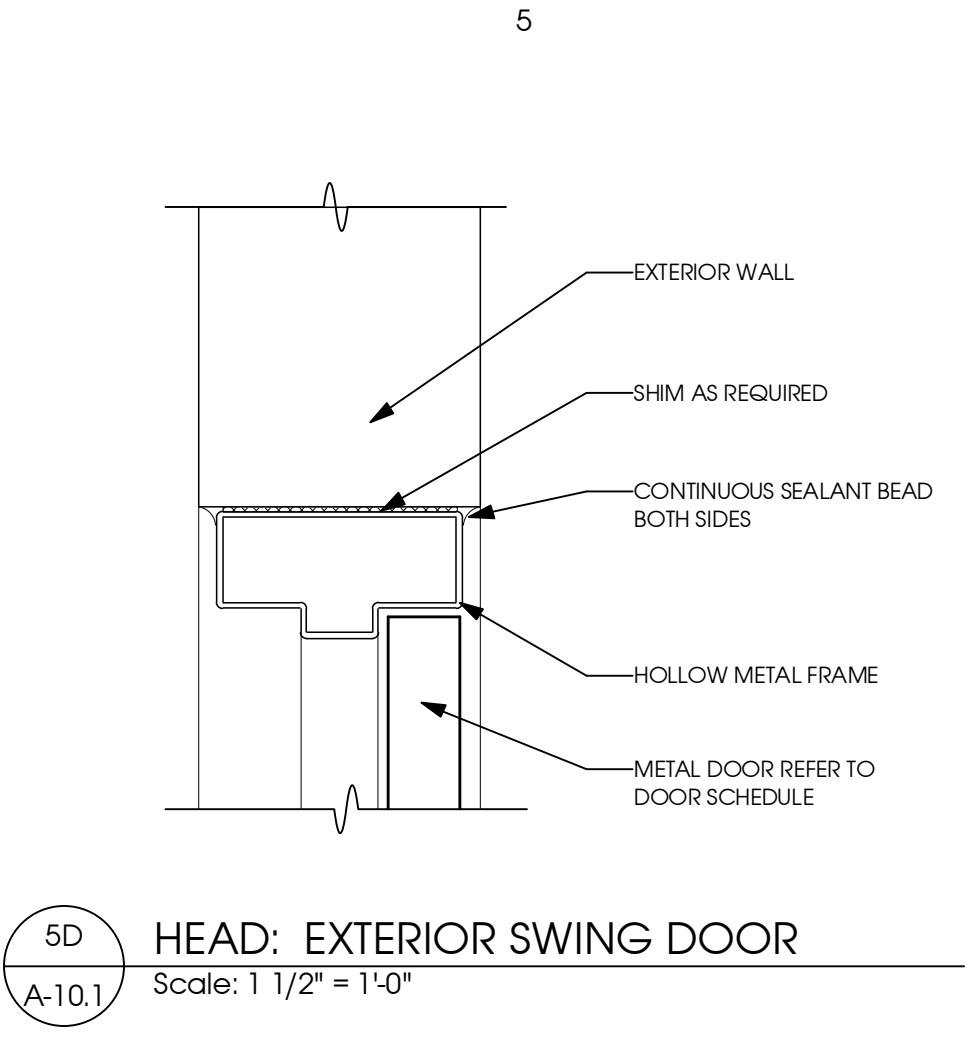
- NOTES:
- ALL HARDWARE REPRESENTS THE INTENDED QUALITY, STYLE, AND APPEARANCE. CONTRACTOR TO PROVIDE HARDWARE CUT SHEETS TO TENANT PROJECT MANAGER PRIOR TO CONSTRUCTION.
 - ALL LOCKS TO BE PROVIDED WITH "BEST" INTERCHANGEABLE CORES AND CYLINDERS.
 - EXIT DOORS SHALL BE OPERABLE FROM THE INSIDE WITHOUT THE USE OF A KEY OR ANY SPECIAL KNOWLEDGE OR EFFORT.
 - AT EXTERIOR DOORS PROVIDE WEATHER STRIPPINGS, BUTTS WITH TAMPERPROOF PINS AND AN ADA THRESHOLD IF NOT EXISTS - ALL THRESHOLDS SHALL NOT EXCEED 1/2" MAX-HEIGHT.
 - AT EXISTING DOORS-REPLACE DAMAGED OR MISSING HARDWARE, REPLACE LOCK CYLINDERS AND PROVIDE TENANT WITH (2) NEW KEYS
 - PROVIDE ANY REQ. SIGNAGE AT SERVICE DOOR CONTACT MALL REPRESENTATIVE.
 - UNDER CUT TOILET ROOM DOOR 1" TO PROVIDE AIR FLOW. VERIFY PRIOR TO CUTTING
 - INSTALL "PEMKO" SMOKE SEALS AT FIRE RATED DOORS.
 - INSTALL DOOR STOPS WHERE A DOOR WOULD STRIKE A WALL OR OTHER PART OF CONSTRUCTION WHEN OPEN.
 - PAINT DOOR & FRAME TO MATCH ADJ. WALL

rojo Architecture
 AA 0002962
 5701 E. Hillsborough Avenue
 Suite 1122
 Tampa, FL 33610
 813 430 5508 (p)
 813 430 5518 (f)
 (e-mail) rojo@rojooarchitecture.com
 www.rojooarchitecture.com

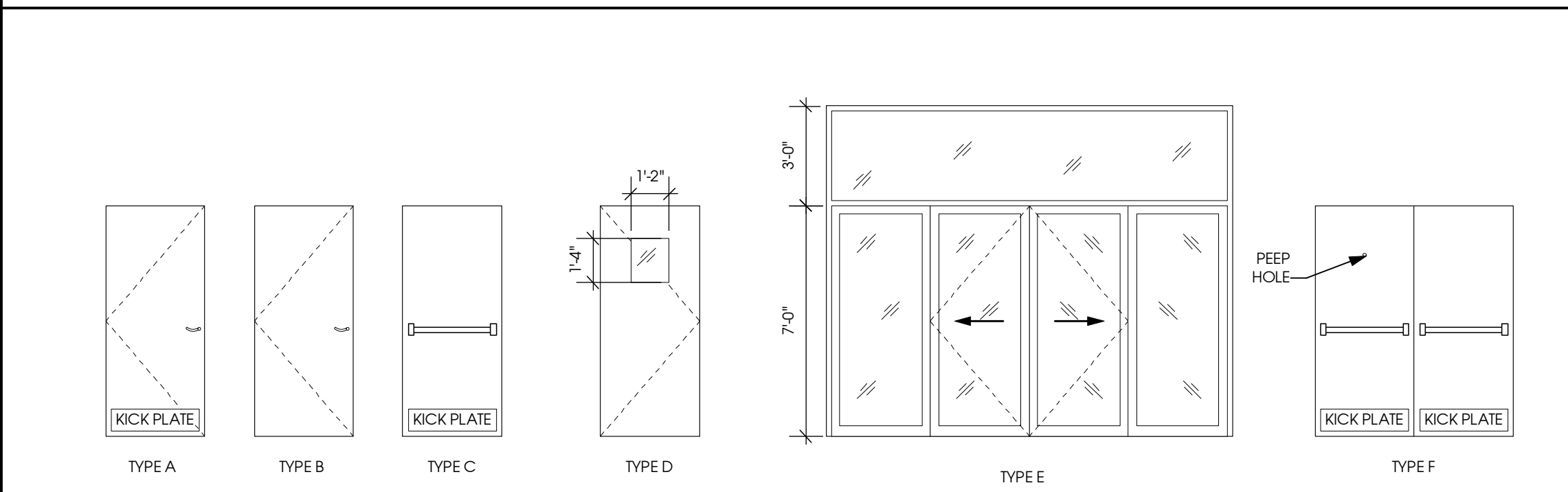
STATE OF FLORIDA
 REGISTERED ARCHITECT

ROBERT A. GLISSON
 AR0015123

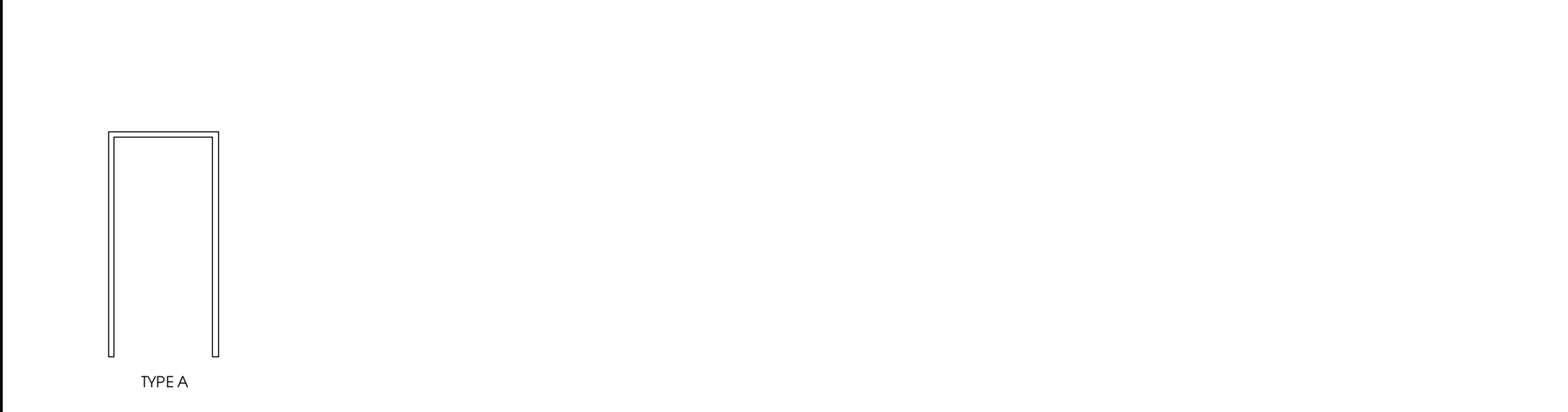
JONATHAN S. MOORE
 AR93150



DOOR TYPES



FRAME TYPES



COLONIAL LANDING
 SHOPPING CENTER
 3220 EAST COLONIAL BLVD.
 ORLANDO, FL



3/2/10	Permit Set
--------	------------

Mark	Date	Description
Issue/Revision		Permit Set
Project ID		10003
CAD File Name		10003-CD.vwx
Drawn By		Drawn By
Checked By		Checked By
Plot Date:		
Record Date:		Record Date

Sheet Title
 DOOR SCHEDULE

SHEET SCALE: AS NOTED

Drawing No.
 A-6.1