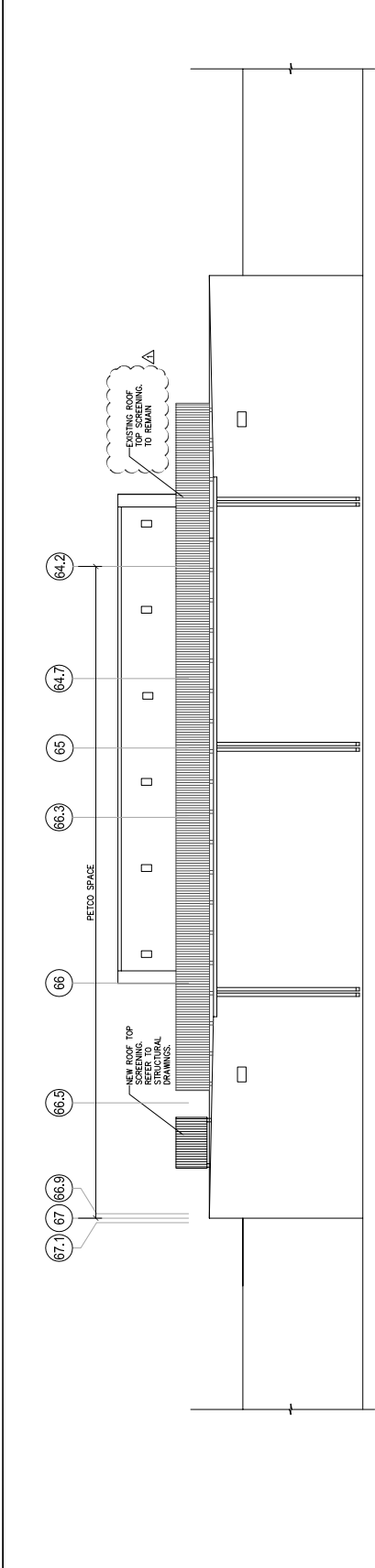




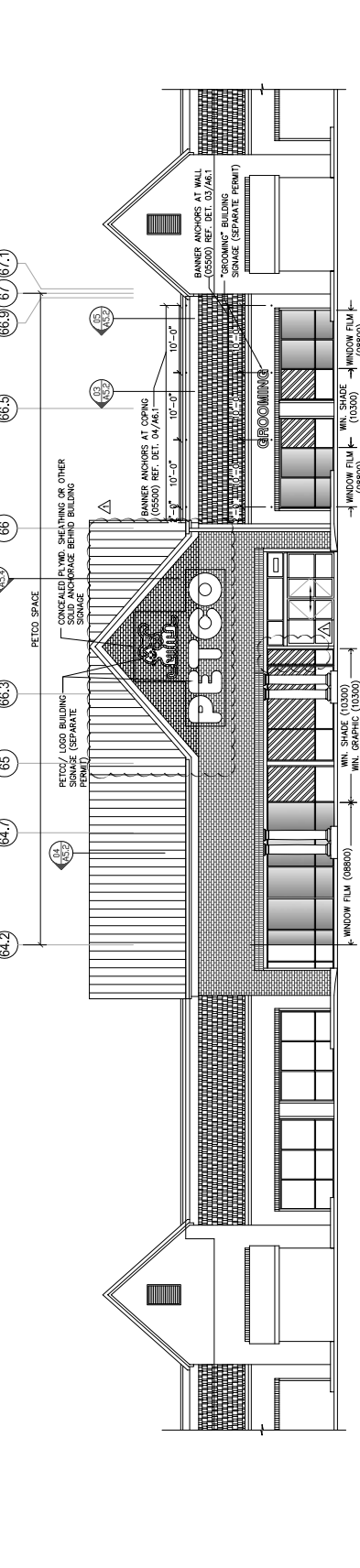
• CONTRACTOR SHALL VERIFY ALL DRAWING CONDITIONS AND COMPLETE CHECKS PRIOR TO PROVIDING THE WORK ELEMENTS IN THESE DRAWINGS.  
 • ANY SHALL PROBABLY NOTIFY THE ARCHITECT OF ANY DISCREPANCIES.  
 • COPYRIGHT SBLM ARCHITECTS P.C. UNAUTHORIZED REPRODUCTION OR OTHER USE OF THIS DRAWING IS PROHIBITED.



**REAR ELEVATION**  
 REF: A2.1  
 SOURCE: 11  
 10'-0" 11'-0"



**PARTIAL RIGHT ELEVATION**  
 REF: A2.1  
 SOURCE: 06  
 10'-0" 11'-0"



**FRONT ELEVATION**  
 REF: A2.1  
 SOURCE: 01  
 10'-0" 11'-0"

REVISIONS	
NO.	DESCRIPTION
1	ISSUED FOR CONSTRUCTION
2	REVISED PER COMMENTS
3	REVISED PER COMMENTS
4	REVISED PER COMMENTS
5	REVISED PER COMMENTS
6	REVISED PER COMMENTS
7	REVISED PER COMMENTS
8	REVISED PER COMMENTS
9	REVISED PER COMMENTS
10	REVISED PER COMMENTS
11	REVISED PER COMMENTS
12	REVISED PER COMMENTS
13	REVISED PER COMMENTS
14	REVISED PER COMMENTS
15	REVISED PER COMMENTS
16	REVISED PER COMMENTS
17	REVISED PER COMMENTS
18	REVISED PER COMMENTS
19	REVISED PER COMMENTS
20	REVISED PER COMMENTS

**PETCO**  
 ANIMAL SUPPLIES STORES, INC.  
 PETCO CARRY, INC.  
 218 CROSSROADS BOULEVARD  
 CARY, NC 27518

**SBLM**  
 ARCHITECTS  
 121 HAWK CREEK DRIVE  
 NEW YORK, NY 10001  
 TEL: 212 275 6225  
 WWW.SBLM.COM

**A4.1**  
 EXTERIOR ELEVATIONS