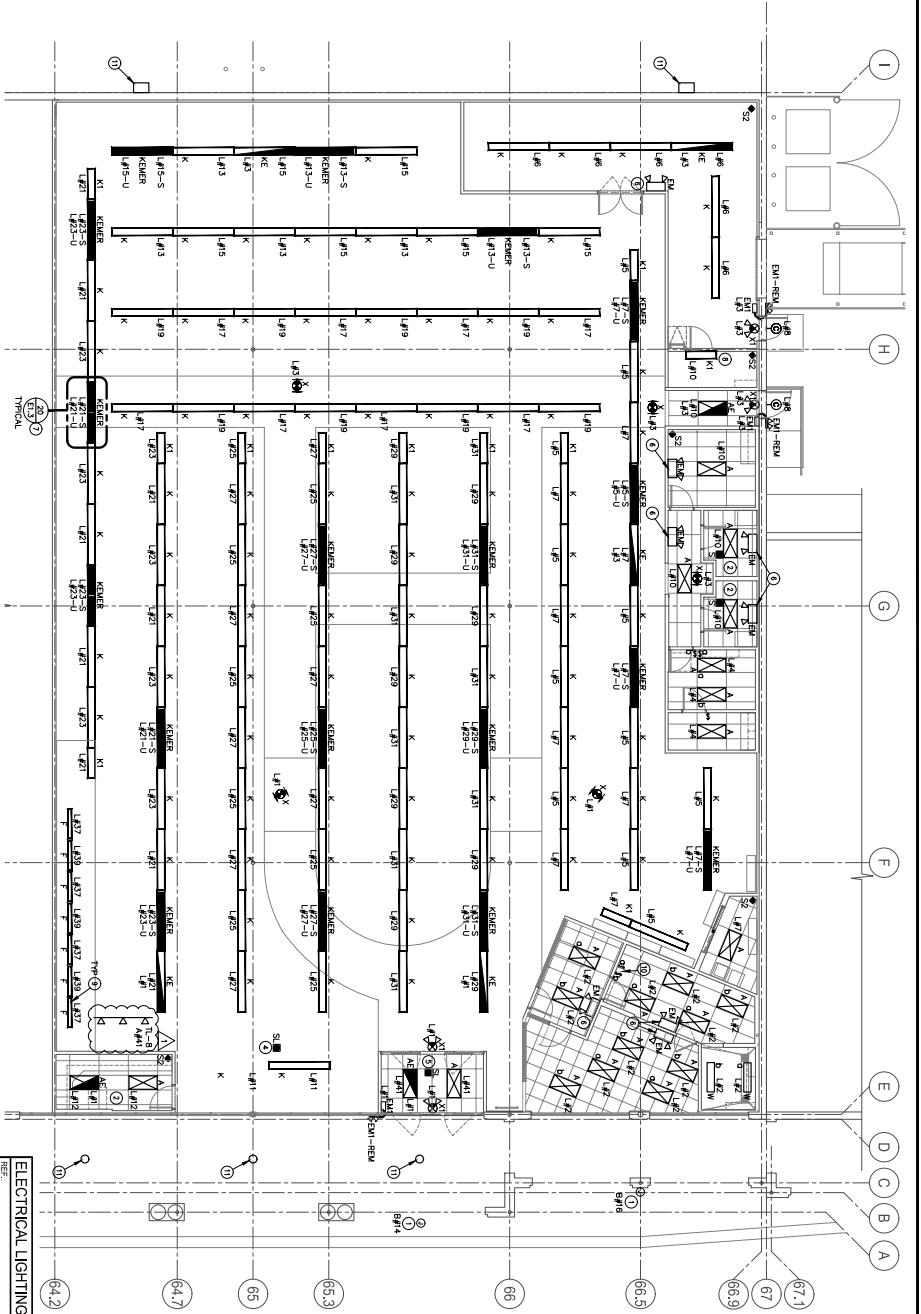


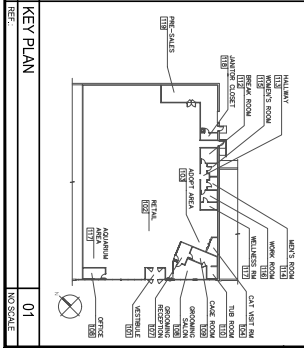
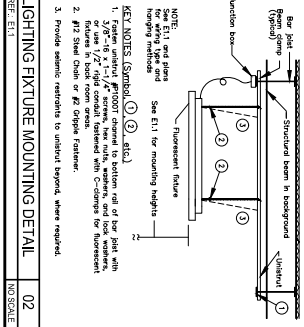
● CONTRACTOR(S) SHALL VERIFY EXISTING CONDITIONS AND CORRELATE DIMENSIONS PRIOR TO PROVIDING THE WORK DETAILED IN THESE DRAWINGS, AND SHALL PROMPTLY NOTIFY THE ARCHITECT OF ANY DISCREPANCIES.
 ● COPYRIGHT SBLM, ARCHITECTS PC. UNAUTHORIZED REPRODUCTION OR OTHER USE OF THIS DRAWING IS PROHIBITED.



- NOTES FOR THIS DRAWING**
- All light fixtures to be connected to panel 1, unless otherwise noted.
 - All lighting fixtures in sales areas controlled through the EMS lighting control system.
 - Emergency egress lights shall be included to the nearest right light fixture except where otherwise noted.
 - Connect sales and service areas to existing equipment and lighting fixtures as indicated. All final connections to existences, modified and existing equipment shall be the contractor's responsibility.
 - See sheet E2.2 for location of exhaust fans.
 - Mount all emergency lighting per E.1 or at 135° AFF.
 - Chasing mounts, occupancy sensors, and other lighting in rooms identified except for all ceiling sensors at 15' mounts.
 - See sheet E.1 for lighting fixture mounting height schedule.
 - Lower casework (e.g. 3", 4", 12" at wall) and luminaires indicates switching arrangement.

- KEYNOTES (SYMBOLS, etc.)**
1. Junction box for sign. Vary location and connections field. Signs controlled electrically from the point of mounting and shall be within the interior face of the exterior wall.
 2. This room has wall insulation. Ceiling. Maintain adequate clearance for light fixture installation.
 3. Not used.
 4. Provide light sensor for store front of lights. Mount on bottom chord of bar rail (ceiling) at approximately 2' from bar rail.
 5. Provide light sensor for vestibule normal lighting.
 6. Connect fire emergency alarm to the controller keeping the lighting fixture in this room instead of controller and motion sensor controlling the lighting. This connection shall be the contractor's responsibility.
 7. Referring to sheet E2.1 for the control cabinet. See E.1 for the unswitched box to the controller.

8. Mount on wall above door at 8'0" AFF.
9. A single light to be mounted upside down top of link, keene and security.
10. Label for identification of wall mounted ceiling. Confirm actual mounting for reference.
11. Schedule for lighting fixtures and wall panels to remain. Check actual situation to the new condition.



DATE	DESCRIPTION
10/25/10	ISSUE FOR PERMIT
11/25/10	ISSUE FOR CONSTRUCTION
02/25/11	ISSUE FOR AS-BUILT
05/25/11	ISSUE FOR FINAL
08/25/11	ISSUE FOR ARCHIVE
11/25/11	ISSUE FOR CLOSURE

PETCO ANIMAL SUPPLIES STORES, INC.
 PETCO "CARY, NC"
 213 CROSSROADS BOULEVARD
 CARY, NC 27518

MEP Engineer of Record
 Randall A. Nelson, P.E.
 14817 West 95th Street
 Lenexa, Kansas 66215
 Phone 913 322 5150