

CONTRACTOR(S) SHALL VERIFY EXISTING CONDITIONS AND CORRELATE DIMENSIONS PRIOR TO PROVIDING THE WORK DETAILED IN THESE DRAWINGS. AND SHALL PROMPTLY NOTIFY THE ARCHITECT OF ANY DISCREPANCIES.
 COPYRIGHT SBLM ARCHITECTS PC. UNAUTHORIZED REPRODUCTION OR OTHER USE OF THIS DRAWING IS PROHIBITED.

PLUMBING FIXTURE SCHEDULE

TAG	DESCRIPTION	FIXTURE (select one Mfr)		TRIM (Select one Mfr)		PIPE SIZES					SFU	DFU	REMARKS
		MFR	MODEL	MFR	MODEL	TRAP	WASTE	VENT	CW	HW			
P1	Water Closet PA Tank Floor Mounted	Kohler Am Stand	K-3505-T 2333.100			4"	4"	2"	1/2"	-	5	6	White vitreous china, elongated bowl, pressure assisted siphon jet flush action, flushometer tank with left hand flush lever, metal actuator (trip) arm Church #9500 open front seat w/o lid, 1.6 gallon per flush. Provide tank locking clips.
P1A	Water Closet PA Tank Barrier-Free Floor Mounted	Kohler Am Stand	K-3493-T 2377.1			4"	4"	2"	1/2"	-	5	6	White vitreous china, 17" high elongated bowl, pressure assisted siphon jet flush action, flushometer tank with flush lever on wide side of stall, Church #9500 open front seat w/o lid, 1.6 gallon per flush. Provide tank locking clips.
P2	Urinal Wall Hung	Kohler Am Stand Eljer Crane	K-4960-ET 6501.010 161-2030 7197	Zurn	Z-6003-WS	2"	2"	2"	3/4"	-	5	4	White vitreous china, 3/4" top spud, 1.0 gallon per flush, mounted to wall with wall hangers. Mount with rim 17" AFF.
P3	Lavatory Countertop Round	Kohler Am Stand Eljer	K-2196-4 0476.028 051-3514	Symmons	S-60-G-H	2"	2"	2"	1/2"	1/2"	2	2	Self rimming white vitreous china, 4" faucet centers, open grid drain strainer, front overflow.
P4	Map Receptor	Fiat	MSB2424	Fiat	830 AA	3"	3"	2"	3/4"	3/4"	3	3	Fiberglass floor service sink, 3" drain with open grid strainer, faucet with top brace, stops & vacuum breaker
P5	Sink - Single Compartment 20 Gauge	Elkay	GECR-2521	Chicago Faucet	785	2"	2"	2"	1/2"	1/2"	4	2	25" x 21" W 5-3/8" D. Type 304 stainless steel. 3-1/2" drain opening.
P6	Work Room Sink Stainless Steel	Elkay	SS-8124-(L or R)	Elkay	LK940GN04TH	2"	2"	2"	1/2"	1/2"	3	2	Sturdibuilt type 304 stainless steel with 24" drain board, 8" backsplash, square corner construction, #LK-188 grid strainer with tail piece, four tubular steel legs. * Verify drain board side (Left or Right) with floor plan
P7	Sink Countertop Stainless Steel	Elkay	D11515	Speakman	SC-30B4-LD	2"	2"	2"	1/2"	1/2"	2	2	Self rimming stainless steel hospitality sink, 2 holes 4" on center. Open grid drain strainer.
P8	Electric Water Cooler Barrier-Free	Elkay Haws Oasis	EZSTL8C HWUACP8L PBACSL			2"	2"	2"	1/2"	-	1/2	1	Wall mounted barrier free, front and side push bars, single utility connection. HI-Lo model
P9	Waste Hose Box	Ox Box	Outlet Box			2"	2"	2"	3/4"	3/4"	4	2	ABS recessed outlet box. Valves with male threaded outlet. Provide vacuum breakers on hot and cold water outlets.
P10	Water Heater Gas 60 Gallon	A.O. Smith	BTH-120 NO SUBSTITUTIONS			-	-	-	1 1/2"	1 1/2"	-	-	94% extra high efficiency, zero clearance to combustibles. PVC vent and combustion air intake. Sealed combustion chamber. 3/4" gas connection. 237 GPH recovery @ 60 deg. temp. rise.
P12	Hair Interceptor	Zurn	Z-1180 NO SUBSTITUTIONS			-	2"	-	-	-	-	-	2" inlet and outlet, removable sediment bucket.
FD1	Floor Drain 5" Round Nickel Bronze	Jay R. Smith Wade Zurn	2005-13-NB 110*STD5 ZN-415-B-P			2" or 3"	2" or 3"	2" or 3"	-	-	-	3	Dura coated cast iron body with bottom outlet, combination invertible membrane clamp & adjustable collar with type B polished nickel bronze strainer, polished nickel bronze top, trap primer fitting. Installed elevation: EL [-0'-0"] (Flush)
FS1	Floor Sink 12.5"x12.5"x6"D Nickel Bronze	Jay R. Smith	3141Y-19-SSM NO SUBSTITUTIONS			2" or 3"	2" or 3"	2" or 3"	-	-	-	3	Square indirect waste drain, cast iron body with A.R.E., no hub bottom outlet, hinged nickel bronze grate, and solid bottom ported sediment bucket with stainless steel mesh screen. Installed elevation: EL [-0'-1"]
FS2	Floor Sink 8"x 8"x6"D 3/4 Grate Nickel Bronze	Jay R. Smith Wade Zurn	3100-21 9110-EF4 Z-1910-3-K-33			2" or 3"	2" or 3"	2" or 3"	-	-	-	3	Sani-Floor receptor, cast iron body with white acid resisting porcelain enamel interior, anti-splash interior bottom dome strainer, anchor flange, 3/4 grate, loose set nickel bronze. No alternate for this fixture will be accepted without prior written approval. Installed elevation: EL [-0'-0"] (Flush)
FS3	Floor Sink 8"x 8"x6"D	Zurn	FD2378			2" or 3"	2" or 3"	2" or 3"	-	-	-	3	Square indirect waste drain, cast iron body with acid-resisting coating and PVC anti-splash dome strainer. No grate. Installed elevation: EL [-0'-0"] (Flush)
CP1	Recirculating Pump	Taco	0014 Bronze										Bronze. Controlled By Aquastat Set @ 110 Degrees Fahrenheit 10 GPM @ 16", 120V, 1 Ph
TV1	Tempering Valve	Powers	431			-	-	-	3/4"	3/4"	-	-	Tempering valve for 110 deg. water. ASSE 1017 Compliant.
HB1	Hose Bibb Freezeproof Roof Mounted	Jay R. Smith Wade Zurn	5609QT 8600 Z1321-C			-	-	-	3/4"	-	-	-	Freezeproof key-operated wall hydrant

PLUMBING GENERAL NOTES

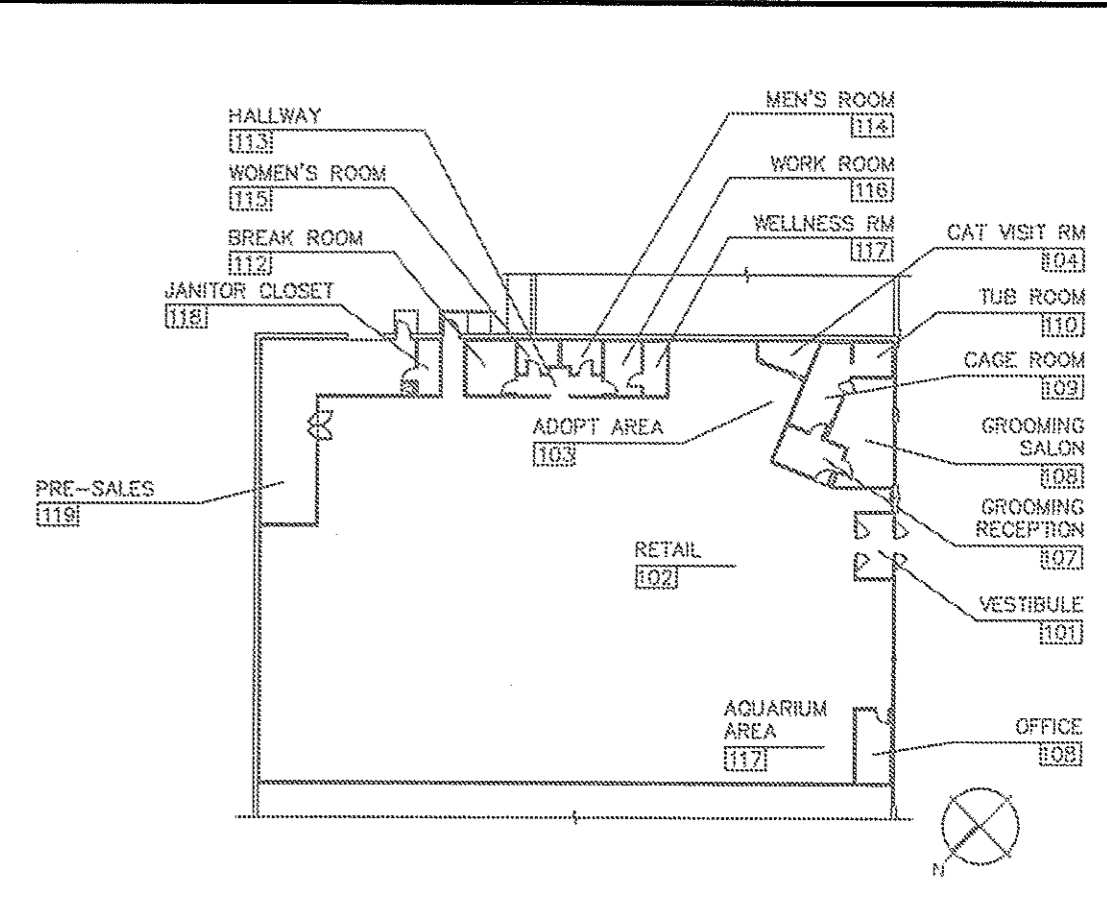
- Plumbing Contractor shall coordinate locations of all plumbing piping and sprinkler piping to clear intake louvers. Provide 10'-0" clearance in all directions from vents through roof to outside air intakes.
- The floor plans and risers do not show all valves. Contractor shall provide isolation valves at all fixtures and valves for each water pipe supplying a fixture group (e.g. Toilet Room, Grooming Area, etc.) for ease of service and maintenance. Provide isolation valve on each underslab pipe branch, aquarium group, and at each side of vendor-supplied equipment.
- Maintain minimum 10'-0" between outside air intakes and any exhaust outlet or plumbing vent.
- Provide scald guard on all traps and hot water supplies of sinks and lavatories where exposed to open knee space.
- Refer to Architectural Plans and Project Manual for trenching details and slab repairs.
- Where demolition is required, cap off water and sanitary piping made obsolete. Remove all above slab piping, abandon all obsolete underslab piping. No unused piping shall remain connected to the active system.
- Contractor shall coordinate activities with local utilities (Water, Sewer, Gas) and shall include all utility requirements including, but not limited to, materials, labor and metering clearances. Contractor shall secure, pay and schedule all required permits, fees, and required inspections.
- Floor drain and floor sink trap sizes are optional at the Contractor's discretion based on availability and at no additional cost to PETCO as long as not prohibited by local codes or ordinances.
- For water closets, sinks, and lavatories, provide all necessary supply and drainage fittings for connections to building systems. On supply piping, provide wheel handle stops or 1/4"-turn ball valve - no keyed stops are permitted.

HORIZONTAL PIPING SUPPORT

- Horizontal pipe of the following materials shall be supported according to the Manufacturer's recommendations but not less than the distances listed below. No piping is to be supported directly from the roof deck.
- Cast Iron Soil Pipe
 - Five foot (5') intervals except where ten foot (10') lengths of cast iron soil pipe are used. Ten foot (10') intervals between supports are acceptable.
 - Steel Threaded Pipe
 - 1-1/4" in diameter or less - eight foot (8') intervals
 - 1-1/2" and over - ten foot (10') intervals.
 - Copper Tube
 - 1-1/4" or less - six foot (6') intervals.
 - 1-1/2" or over - ten foot (10') intervals.
 - Plastic (PVC And ABS) Pipe
 - 1-1/2" or less - three foot (3') intervals.
 - 2" or over - four foot (4') intervals.
 - Exposed
 - All piping in exposed locations to route along walls or structure.

PLUMBING SYMBOLS

Identifier	Description
	Gate Valve/Ball Valve
	OS&Y Gate Valve
	Ball Valve With Memory Stop Kit
	Check Valve
	Balancing Valve
	1/4" Turn Ball Valve
	Gas Cock
	Gas Solenoid Valve
	Union
	Denotes Cleanout Floor Mounted
	Denotes Cleanout Mounted At Grade
	Denotes Cleanout In Wall
	Denotes Cleanout Deck Plate
	Water Meter
	Gas Meter
	Thermometer
	Wall Hydrant
	Floor Drain
	Floor Sink
	Roof Drain
	Overflow Drain
	Sanitary Sewer Piping Below Grade
	Sanitary Sewer Piping
	Condensate Piping
	Storm Sewer Piping Below Grade
	Storm Sewer Piping
	Vent Piping
	Vent Piping (Below Slab)
	Cold Water Piping
	Hot Water Piping
	Cold Water Piping (Below Slab)
	Hot Water Piping (Below Slab)
	Hot Water Recirculating Piping
	Filtered Water Piping
	Filtered Water Piping Below Grade
	Gas Piping
	Equipment Designation
	Plumbing Fixture Number
	Vent Through Roof
	Detail Callout
	Connect to Existing



OPEN	02	KEY PLAN	01
REF:	NO SCALE	REF:	NO SCALE

MEP Engineer of Record
 Randall A. Nelson, P.E.
 14817 West 99th Street
 Lenexa, Kansas 66215
 Phone 913 322 5150

PETCO ANIMAL SUPPLIES STORES, INC.
 PETCO "CARY, NC"
 213 CROSSROADS BOULEVARD
 CARY, NC 27518

PETCO
 SAN DIEGO, CALIFORNIA 92121

DISTRIBUTION	DATE
25% SUBMISSION	01-15-10
75% SUBMISSION	01-29-10
98% SUBMISSION	02-25-10
ISSUED FOR CONSTRUCTION	02-26-10

SBLM JOB#	PETCO P.M. JOB#
09147	09277
DRAWN	CHECKED
MTH/JCC/JMM	BJT

DRAWING TITLE:
PLUMBING GENERAL INFORMATION AND SCHEDULES

P1.1