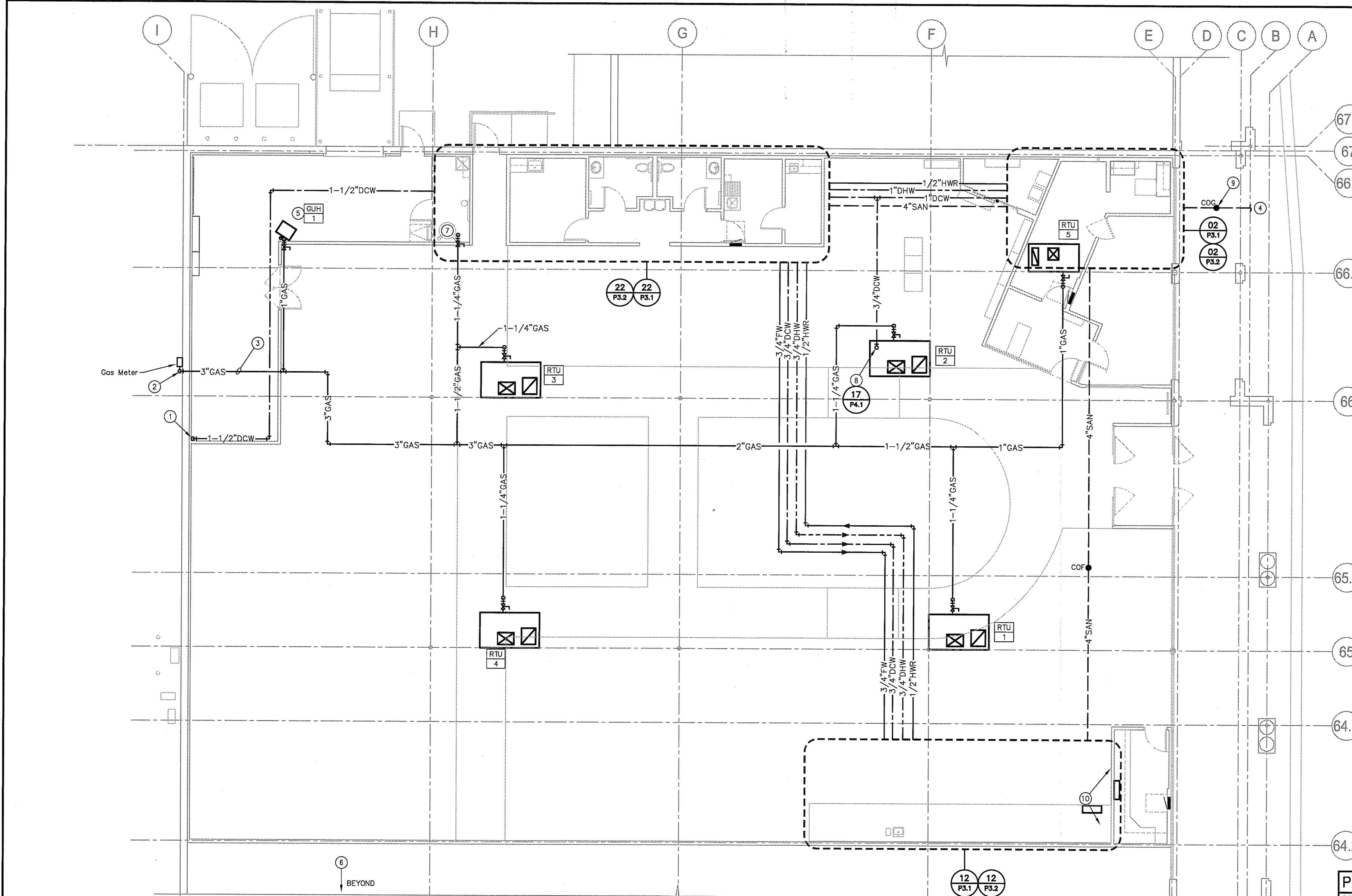


CONTRACTOR(S) SHALL VERIFY EXISTING CONDITIONS AND CORRELATE DIMENSIONS PRIOR TO PROVIDING THE WORK DETAILED IN THESE DRAWINGS, AND SHALL PROMPTLY NOTIFY THE ARCHITECT OF ANY DISCREPANCIES.  
 COPYRIGHT SELM, ARCHITECTS P.C. UNAUTHORIZED REPRODUCTION OR OTHER USE OF THIS DRAWING IS PROHIBITED.



67.1  
67  
66.9  
66.5  
66  
65.3  
65  
64.7  
64.2

- NOTES FOR THIS DRAWING**
1. Install water piping as high as possible toward roof structure.
  2. Install trap primers to all floor drains to meet local codes.
  3. Coordinate all utility connections with Landlord and utility company.
  4. Install 4" soil and waste piping at 1/8" fall per foot. Install other soil and waste piping at 1/4" fall per foot. Slope toward points of connection. Field verify finished floor elevation and invert elevation of existing soil/sewer pipe for points of connection.
  5. Refer to mechanical equipment shop drawings for orientation of units for actual rough-in locations.
  6. All utility services are new unless noted otherwise.
  7. All connections to sanitary laterals shall be made using wye or double-wye fittings, no tee fittings permitted.

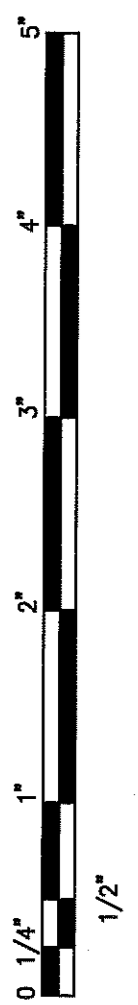
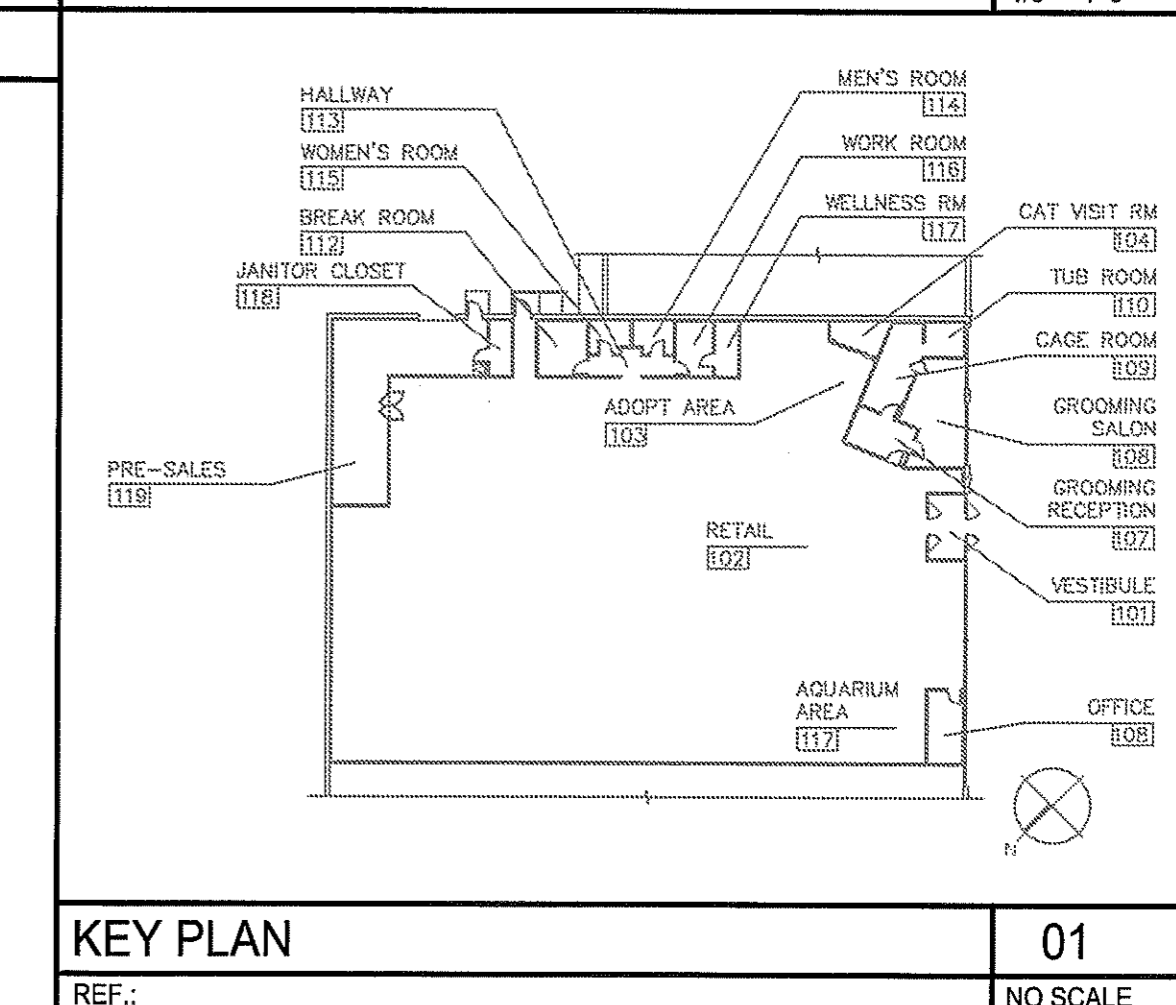
- KEYNOTES (SYMBOLS ①, ②, ETC.)**
1. 2" CW service. Reference civil drawings for continuation.
  2. 3" gas up outside of building. Provide shut-off valve in exterior riser. Coordinate with gas utility for provision of pressure regulators, and provide same. See 12/P4.1 for gas loads.
  3. 3" gas to rooftop units. All piping above roof shall be installed in order to avoid roof hatch, walkways, and other equipment. Paint per architectural drawings. Plumbing Contractor to field verify rough-in location with rooftop unit manufacturer prior to installation of gas piping. Provide shut-off cock and dirt leg at each unit connection.
  4. Provide sanitary connection to existing sewer. Confirm invert and location of connection in field. Deviations from graphically shown locations are permitted if a) no additional cost to the Owner and b) they are verified with and approved by the PETCO project manager.
  5. 1" gas down through roof to Gas Unit Heater GUH#1.
  6. Fire water alarm valve and riser. See drawing F1.1 for additional information.
  7. 1-1/4" gas down through roof to gas water heater.
  8. Stub up 3/4" CW from below roof inside curb. Install one (1) HB1 freeze proof

hydrant with integral vacuum breaker through rooftop unit curb at condensing section end of the unit. Provide blocking as required on inside surface of the curb to accommodate manufacturer's installation instructions. Refer to architectural drawings for limitations on cutting of roof deck and coordinate with GC for minimizing roof opening size while maintaining access for maintenance or replacement of hose bib and protection of piping from freezing. Locate one (1) key hung inside at the roof hatch and one (1) key at the manager's office.

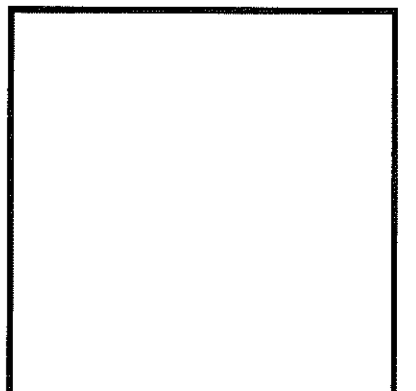
9. Contractor to determine the proximity of any mechanical means for sewage conveyance. For projects that are constructed in a location such that the failure of any mechanical device will pose risk of backflow of sewage into the Petco store, provide backwater valve in this location. Contractor shall submit a minimum of two backwater valve options for review by Petco's design team and for final selection by Petco's Construction & Maintenance Department.

10. Pipe condensate from Office AHU to Aquatics floor sink.

**PLUMBING FLOOR PLAN** 06  
 REF.: 1/8" = 1'-0"



MEP Engineer of Record  
 Randall A. Nelson, P.E.  
 14817 West 96th Street  
 Lenexa, Kansas 66215  
 Phone 913 322 5150



**PETCO ANIMAL SUPPLIES STORES, INC.**  
 PETCO "CARY, NC"  
 213 CROSSROADS BOULEVARD  
 CARY, NC 27518

DISTRIBUTION	DATE
25% SUBMISSION	01-15-10
75% SUBMISSION	01-29-10
98% SUBMISSION	02-25-10
ISSUED FOR CONSTRUCTION	02-26-10

SELM JOB#	PETCO P.M. JOB#
09147	09277
DRAWN: MTH/JCC/JMM	CHECKED: BJT

DRAWING TITLE:  
**PLUMBING PLAN**  
**P2.1**