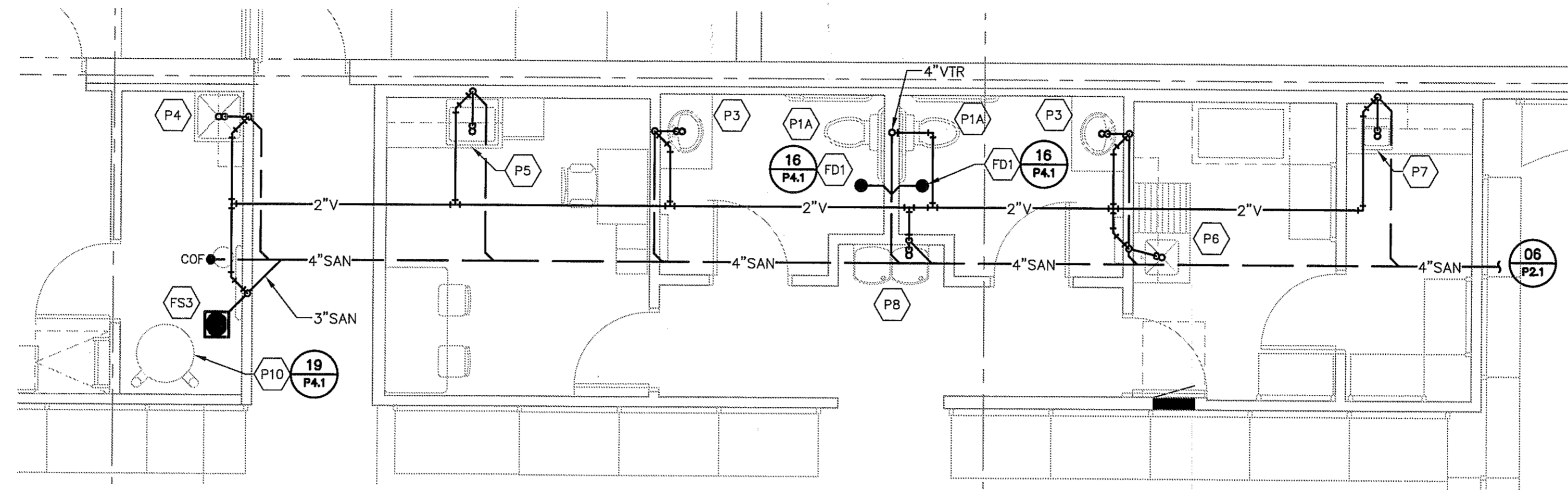
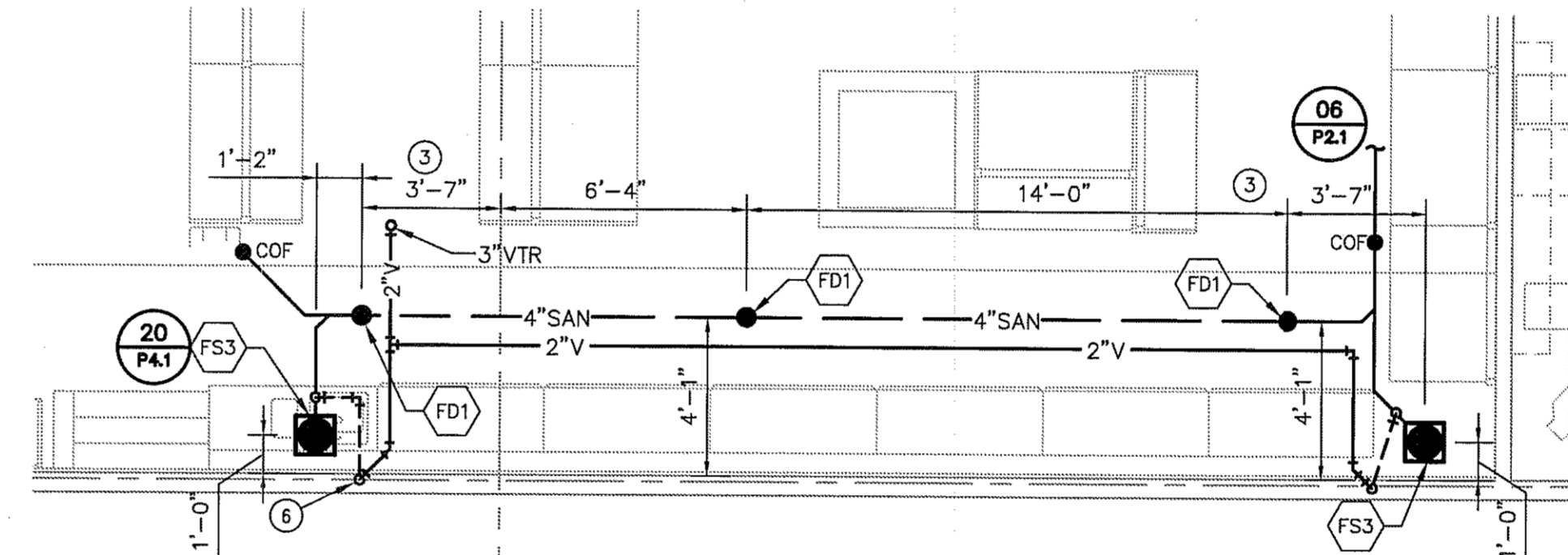


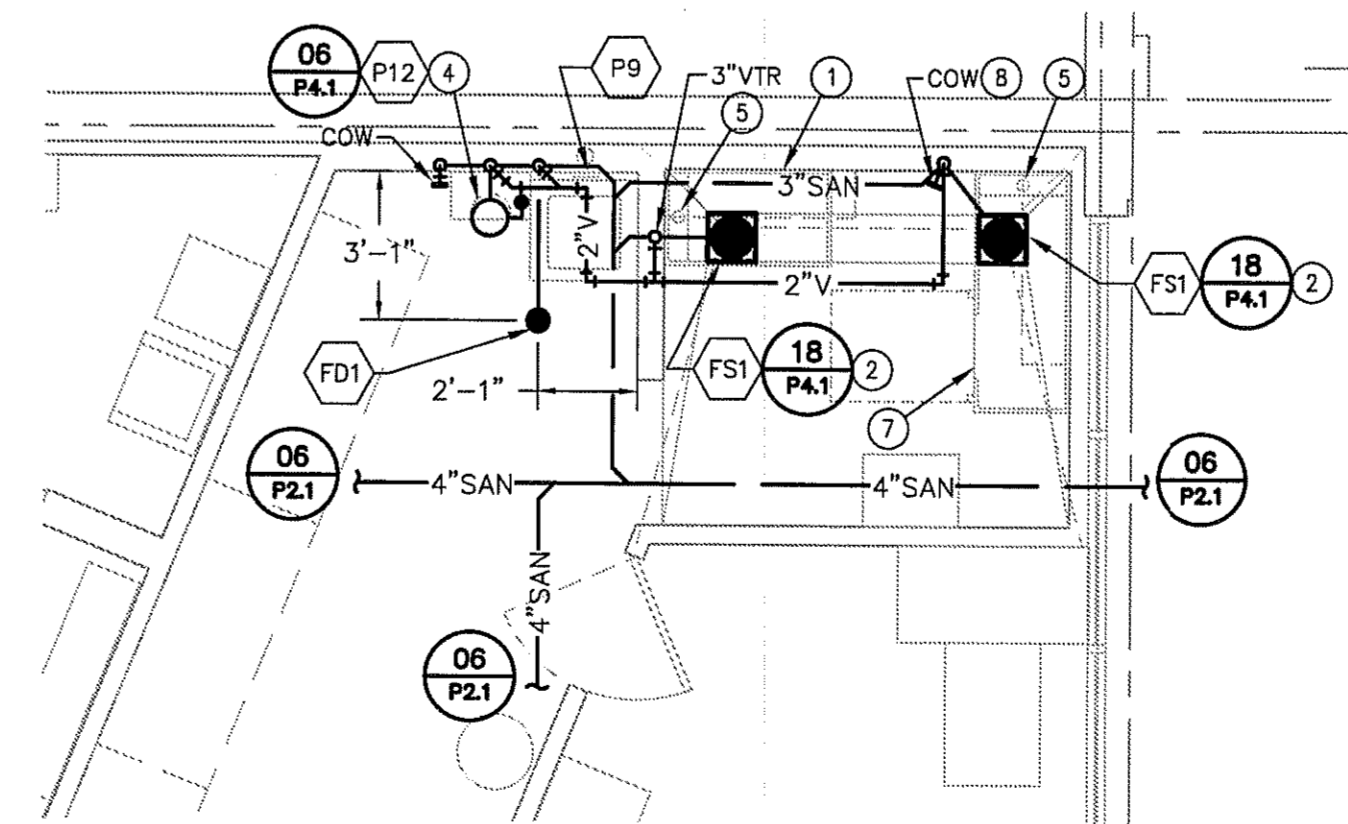
CONTRACTOR(S) SHALL VERIFY EXISTING CONDITIONS AND CORRELATE DIMENSIONS PRIOR TO PROVIDING THE WORK DETAILED IN THESE DRAWINGS.
 AND SHALL PROMPTLY NOTIFY THE ARCHITECT OF ANY DISCREPANCIES.
 © COPYRIGHT SBLM ARCHITECTS PC. UNAUTHORIZED REPRODUCTION OR OTHER USE OF THIS DRAWING IS PROHIBITED.



LARGE SCALE SUPPORT AREA PLAN 22
 REF.: 06/P2.1 1/4" = 1'-0"



LARGE SCALE AQUARIUM AREA PLAN 12
 REF.: 06/P2.1 1/4" = 1'-0"



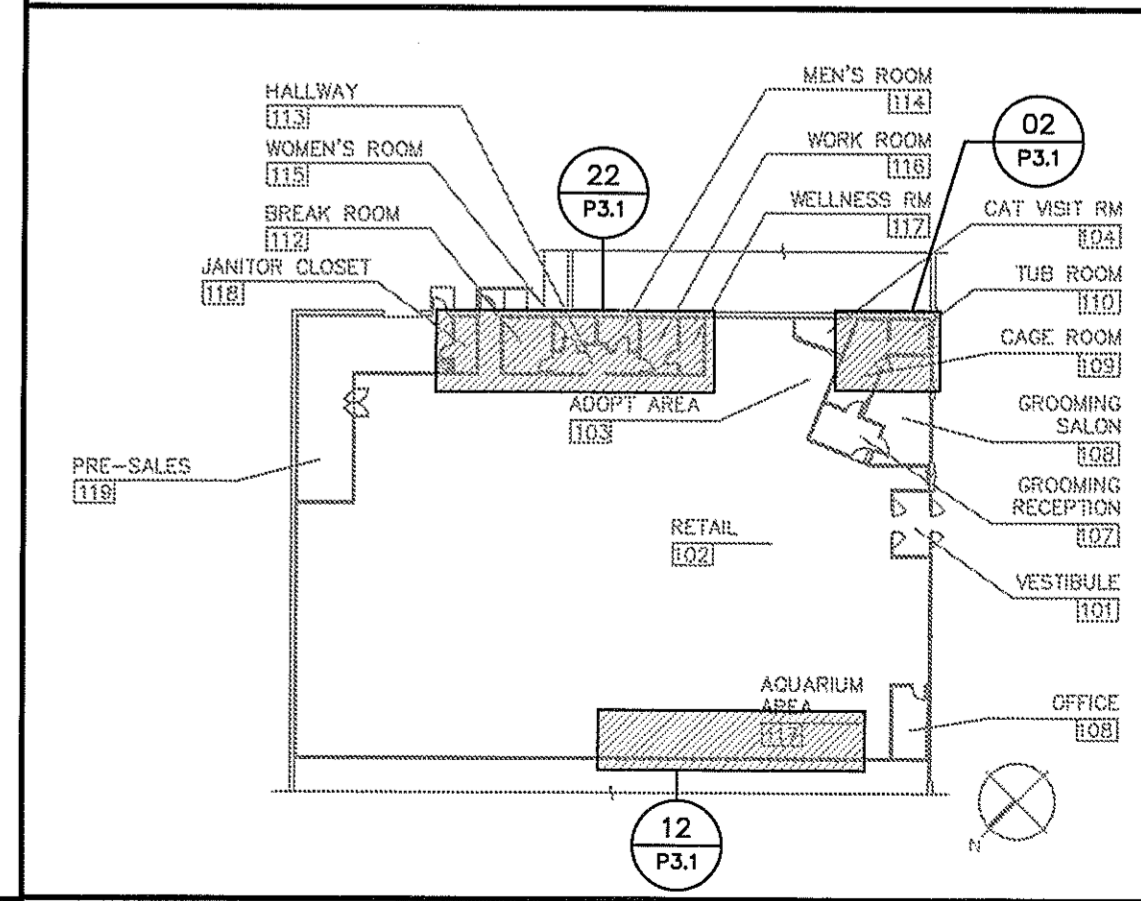
LARGE SCALE GROOMING SALON PLAN 02
 REF.: 06/P2.1 1/4" = 1'-0"

NOTES FOR THIS DRAWING

1. Verify all dimensions with the PETCO vendors.
2. Refer to architectural drawings for Tub Room floor sink locations and Tub Room floor slope information.
3. All dimensions are from the inside face of unfinished wall.

KEYNOTES (SYMBOLS ①, ② ETC.)

1. Forever Stainless Steel grooming tub with faucet, strainer, vacuum breaker furnished by PETCO vendor, installed by Contractor. Contractor shall provide supply and waste connections as required. Contact Mark Arndt at Forever Stainless Steel (402) 935-0771 for rough-in information. Obtain latest equipment literature prior to rough-in.
2. The floor in the Tub Room is sloped. Refer to Architectural plans and coordinate with General Contractor prior to installation of floor sinks in this area. Also refer to plumbing fixture schedule.
3. Dimensions shown are to centerline of drain of floor sink/drain. Verify with latest architectural fixture plan prior to installation.
4. Mount hair interceptor on floor, according to manufacturer's instructions.
5. Extend copper tailpiece out of tub outlet down with air gap (maintaining clearance for hinging floor drain grate for removal and replacement of sediment bucket). See 18/P4.1.
6. Coordinate with E.C. for locations of piping versus conduit and devices.
7. Forever Stainless Steel over-size pet bath with faucet, vacuum breaker and walking ramp, furnished by PETCO vendor, installed by Contractor. Ramp on opposite side of faucet. Contractor shall provide supply and waste connections as required. Contact Mark Arndt at Forever Stainless Steel (402) 935-0771 for rough-in information. Obtain latest equipment literature prior to rough-in.
8. A wall clean-out at 10" AFF is to be provided in the Tub Room. Under no circumstances is it permissible to use a floor clean out. Locate clear of tub legs.



KEY PLAN 01
 REF.: NO SCALE



MEP Engineer of Record
 Randall A. Nelson, P.E.
 14817 West 95th Street
 Lenexa, Kansas 66215
 Phone 913 322 5150

PETCO ANIMAL SUPPLIES STORES, INC.
 PETCO "CARY, NC"
 213 CROSSROADS BOULEVARD
 CARY, NC 27518



DISTRIBUTION	DATE
25% SUBMISSION	01-15-10
75% SUBMISSION	01-29-10
98% SUBMISSION	02-25-10
ISSUED FOR CONSTRUCTION	02-26-10

SBLM JOB#	PETCO P.M. JOB#
08147	09277
DRAWN	CHECKED
MTH/JCC/JMM	BJT

DRAWING TITLE:
SANITARY LARGE SCALE PLANS AND DETAILS

P3.1