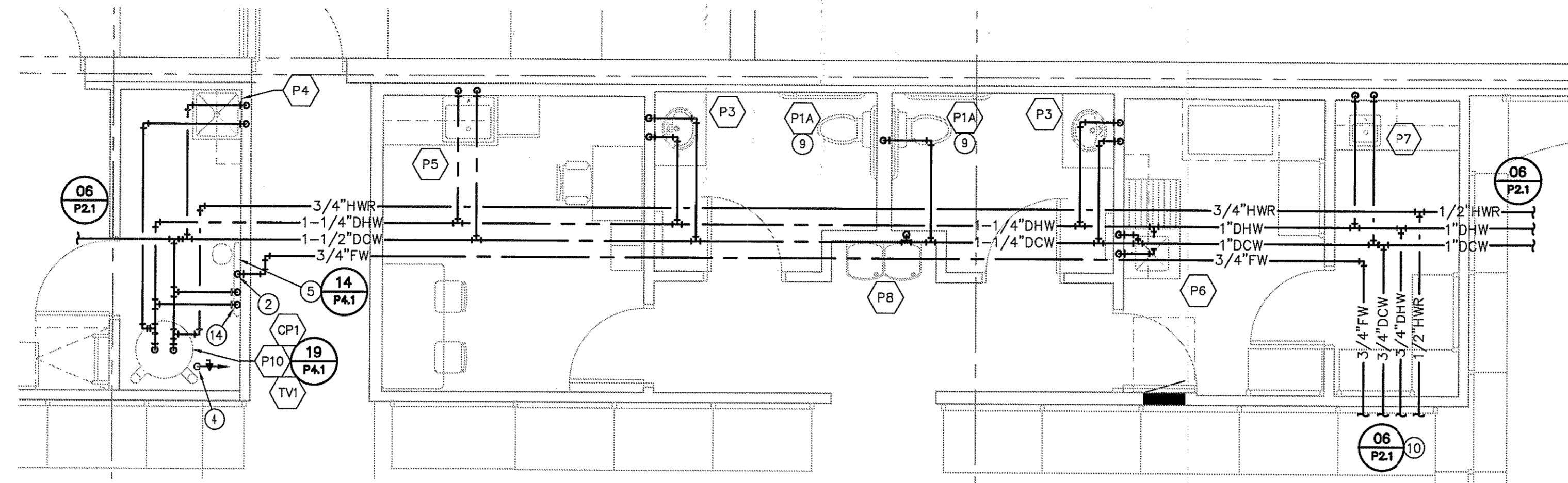
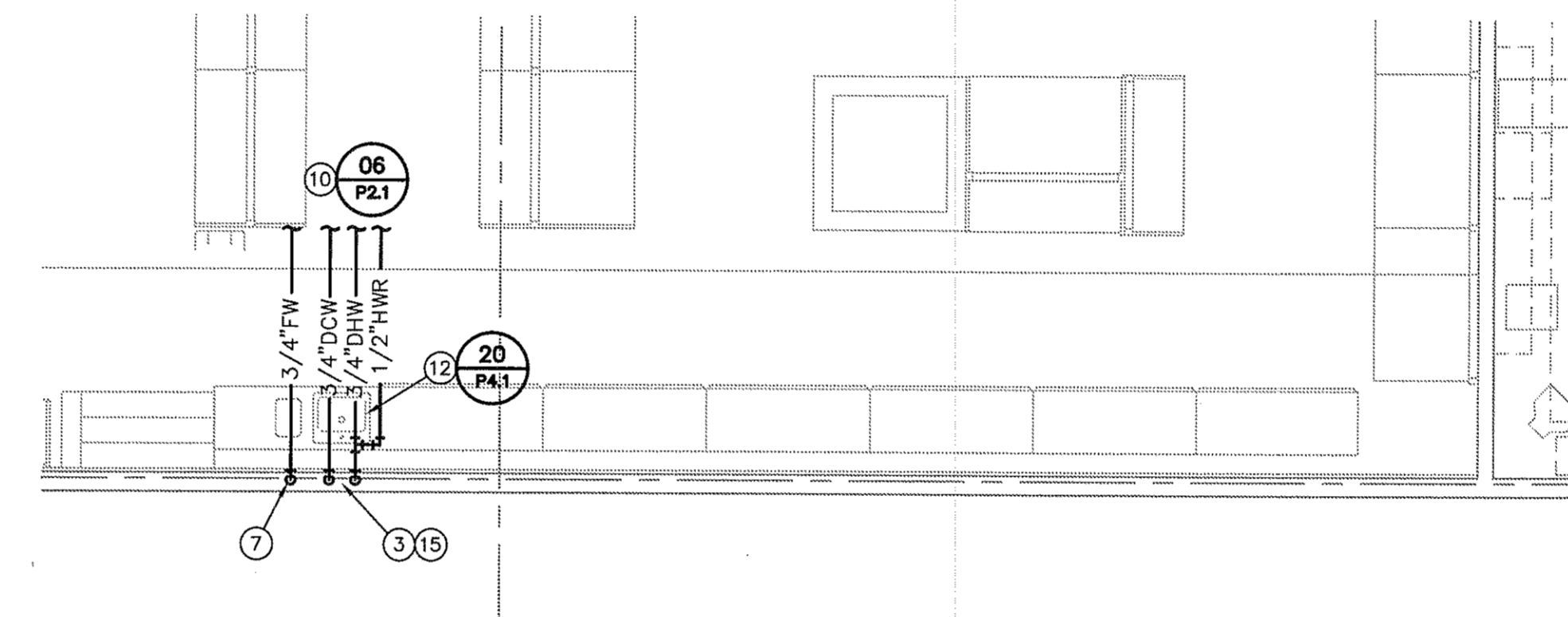


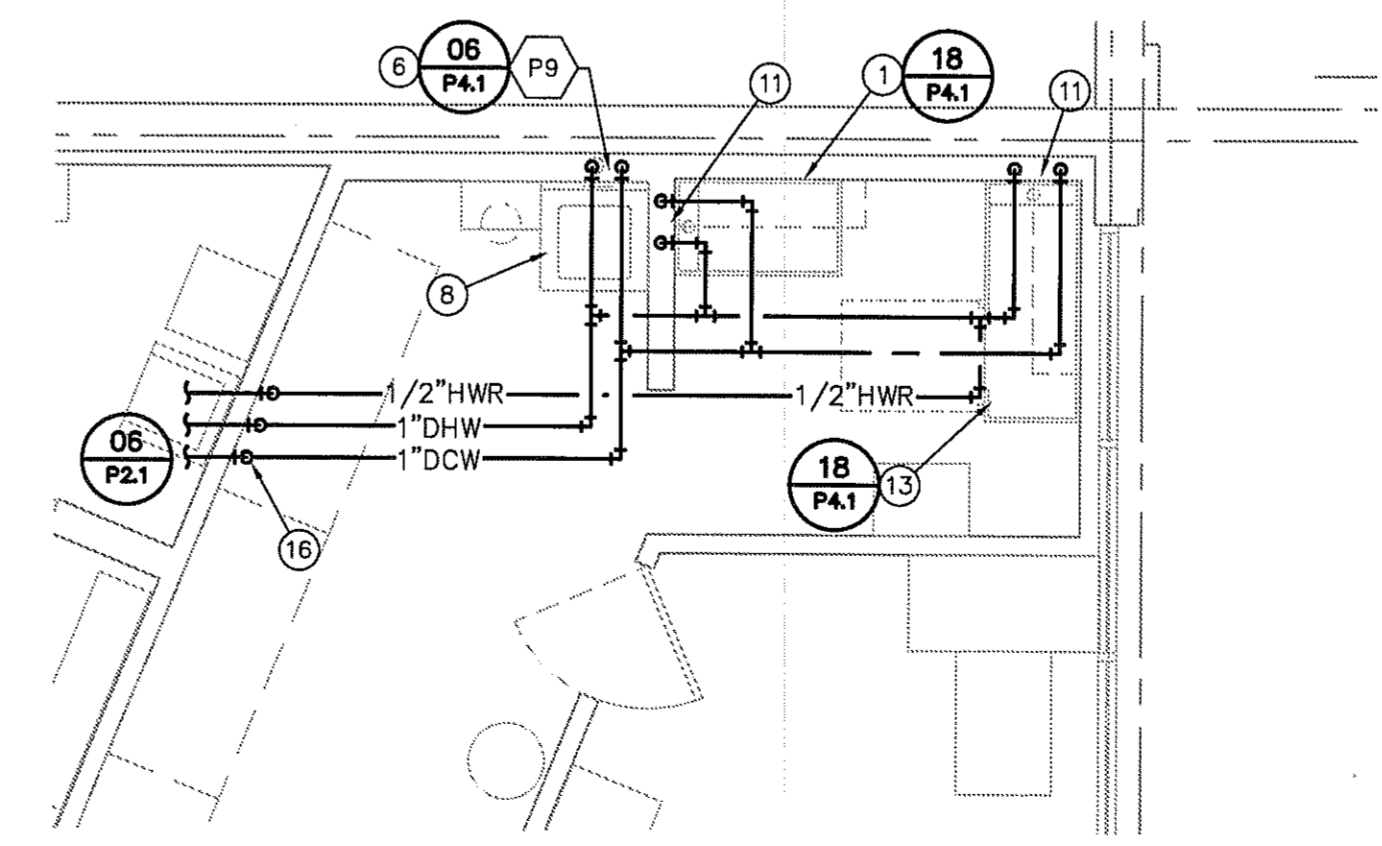
CONTRACTOR(S) SHALL VERIFY EXISTING CONDITIONS AND CORRELATE DIMENSIONS PRIOR TO PROVIDING THE WORK DETAILED IN THESE DRAWINGS. AND SHALL PROMPTLY NOTIFY THE ARCHITECT OF ANY DISCREPANCIES.
 COPYRIGHT SELM ARCHITECTS P.C. UNAUTHORIZED REPRODUCTION OR OTHER USE OF THIS DRAWING IS PROHIBITED.



LARGE SCALE SUPPORT AREA PLAN 22
 REF.: 06/P2.1 1/4" = 1'-0"



LARGE SCALE AQUARIUM AREA PLAN 12
 REF.: 06/P2.1 1/4" = 1'-0"



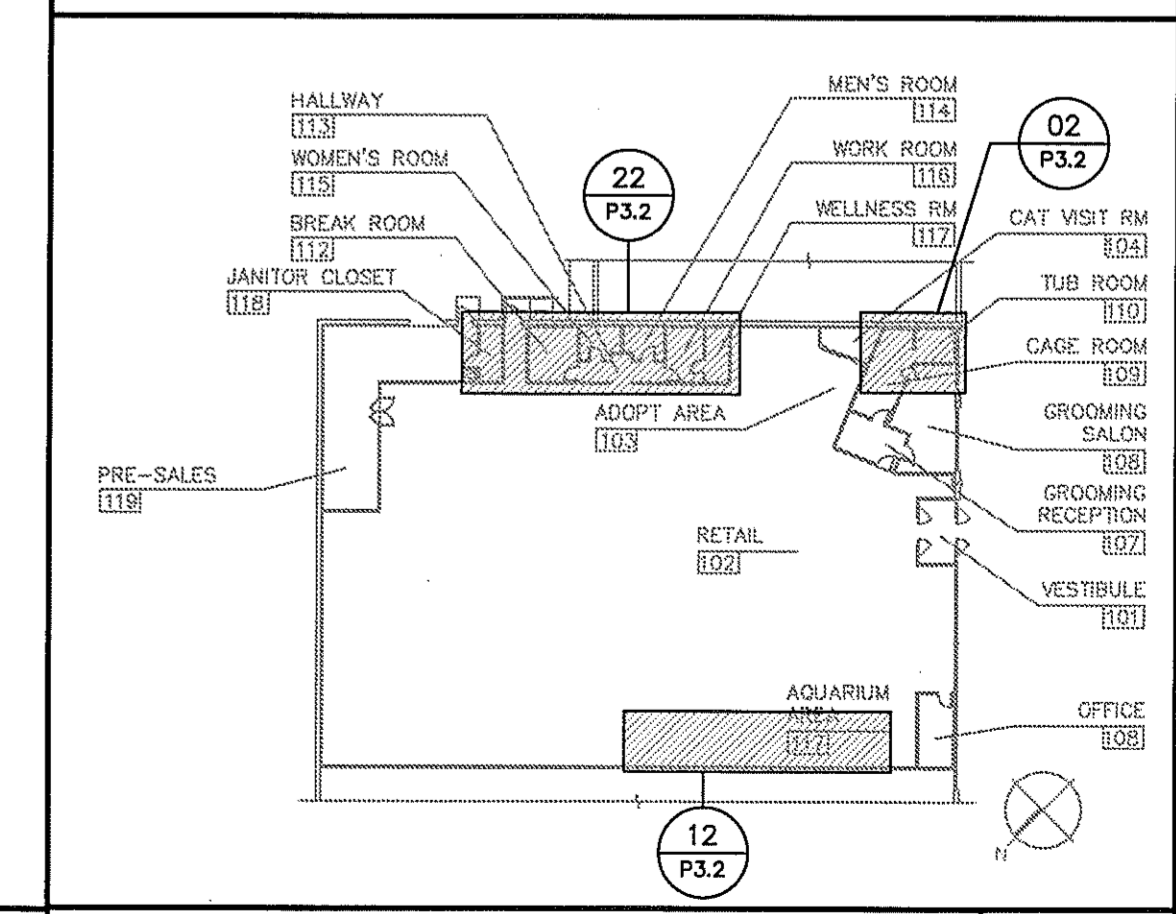
LARGE SCALE GROOMING SALON PLAN 02
 REF.: 06/P2.1 1/4" = 1'-0"

NOTES FOR THIS DRAWING

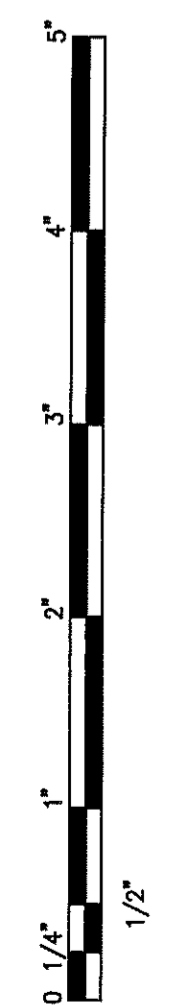
1. Install water piping as high as possible at/to roof structure. Coordinate with roof hatch and roof openings for exhaust fans and RTUs.
2. Water piping in outside walls shall be installed within building insulation envelope. Check for all breaches prior to installation of finished wall.
3. Verify all dimensions with the PETCO vendors.
4. All dimensions are from the inside face of unfinished wall.
5. All water piping under slab shall be type 'K' copper in armflex. No fittings are permitted under the slab. Stub up from slab shall be fitted with 1/4 turn ball valve at 12' AFF, with 3/4" female threads for connection by PETCO vendor.

KEYNOTES (SYMBOLS ①, ② ETC.)

1. Forever Stainless Steel grooming tub with faucet, strainer, vacuum breaker furnished by PETCO vendor, installed by Contractor. Contractor shall provide supply and waste connections as required. Contact Mark Arndt at Forever Stainless Steel (402) 935-0771 for rough-in information. Obtain latest equipment literature prior to rough-in.
2. Rise 3/4" filtered water through 1/4 turn ball valve to ceiling space.
3. Drop 1/2" HW and CW and 3/4" filtered water down from bar joists to bagging station and connect to sink faucets.
4. 1-1/4" gas drop to gas cock and flex connection to Water Heater.
5. Water filter furnished and installed by Marineland Retailer Systems (318) 747-5915. Provide stub-outs for inlet and outlet. See P14/4.1.
6. Provide vacuum breakers at hot and cold water piping serving waste hose box.
7. 3/4" Filtered water to bagging station sink faucet. Stub-up, provide tee at 12" AFF and 1/4 turn valve and 3/4" male adapter. Provide non-removable vacuum breaker Watts #BA or equal. See 20 / P4.1.
8. Stackable washer and dryer by PETCO.
9. Rough-in for toilet water supply must be at least 8" AFF to avoid conflict with cove base.
10. 1" Hot and cold water, 3/4" filtered water and 1/2" hot water return piping at bar joists.
11. Stub out 1/2" CW and HW on 8" centers, 9-1/4" out from unfinished wall frame, for grooming tub faucet 40" AFF.
12. Hospitality sink furnished by PETCO vendor, installed by Contractor.
13. Forever Stainless Steel over-size pet bath with faucet, strainer and walking ramp, furnished by PETCO vendor, installed by Contractor. Ramp on opposite side of faucet. Contractor shall provide supply and waste connections as required. Contact Mark Arndt at Forever Stainless Steel (402) 935-0771 for rough-in information. Obtain latest equipment literature prior to rough-in.
14. 3/4" Mixed water to filter. Provide all necessary accessories. See 14/P4.1.
15. Coordinate with E.C. for locations of piping versus conduit and devices.
16. Drop cold water, hot water, and hot water recirculating pipes down to 12' above ceiling. Coordinate with electrical and mechanical contractor.



KEY PLAN 01
 REF.: NO SCALE



MEP Engineer of Record
 Randall A. Nelson, P.E.
 14817 West 96th Street
 Lenexa, Kansas 66215
 Phone 913 322 3150

PETCO ANIMAL SUPPLIES STORES, INC.
 PETCO "CARY, NC"
 213 CROSSROADS BOULEVARD
 CARY, NC 27518



DISTRIBUTION	DATE
25% SUBMISSION	01-15-10
75% SUBMISSION	01-29-10
98% SUBMISSION	02-25-10
ISSUED FOR CONSTRUCTION	02-26-10

SEAL JOB#	PETCO P.M. JOB #
09147	09277
DRAWN: MTH/JCC/JMM	CHECKED: BJT

DRAWING TITLE:
WATER LARGE SCALE PLANS AND DETAILS

P3.2