

HVAC SCHEDULES

DIFFUSER & REGISTER SCHEDULE

| UNIT ID. | MODEL | DESCRIPTION | NOTES |
|----------|----------------------|---|-------|
| CD1 | 1234 | CEILING DIFFUSER PERFORATED FACE SUPPLY AIR DIFFUSER WITH ADJUSTABLE CURVED BLADES. LAY-IN. NECK SIZE AS NOTED ON SCHEDULE. | 1 |
| CD2 | 12P | CEILING DIFFUSER PERFORATED FACE SUPPLY AIR DIFFUSER WITH ADJUSTABLE CURVED BLADES. SURFACE MOUNT. NECK SIZE AS NOTED ON SCHEDULE. | 1 |
| RG/TG1 | 1230 | CEILING RETURN/TRANSFER AIR GRILLE PERFORATED FACE RETURN AIR GRILLE. NECK SIZE AS NOTED ON SCHEDULE. | 1 |
| TG2/EG2 | 12P | CEILING EXHAUST/TRANSFER AIR GRILLE PERFORATED FACE EXHAUST AIR GRILLE. SURFACE MOUNT. NECK SIZE AS NOTED ON SCHEDULE. | 1 |
| EG1 | 12P | CEILING EXHAUST AIR GRILLE PERFORATED FACE EXHAUST AIR GRILLE. LAY-IN. NECK SIZE AS NOTED ON SCHEDULE. | 1 |
| FRG/FEG | 12-PFF | CEILING, FILTERED EXHAUST/RELIEF AIR GRILLE, PERFORATED FACE FILTERED RETURN GRILLE WITH 1" THICK FILTER. NECK SIZE AS NOTED ON SCHEDULE. | 1 |
| CCD | 530 SERIES 01-530-22 | CONCENTRIC CEILING DIFFUSER. SIDE SUPPLY DISCHARGE CENTER RETURN AIR DRAW. COMBINATION SUPPLY AND RETURN AIR DEVICE. | 2 |
| WTG/WEG | S90H | WALL TRANSFER AIR / EXHAUST AIR HORIZONTAL BAR TYPE GRILLE. SIZE AS NOTED ON SCHEDULE. | 1 |

- NOTES:
 1. SELECTIONS ARE BASED ON J&J REGISTER. ACCEPTABLE ALTERNATES TITUS, ANEMOSTAT, METALAIR, OR PRICE.
 2. SELECTIONS ARE BASED ON ROOFTOP SYSTEMS INC., FURNISHED AS PART OF THE LENNOX RTU PACKAGE.

SPLIT TYPE AC UNIT SCHEDULE

| TAG NO. | INDOOR UNIT | | | OUTDOOR UNIT | | | | ELECTRIC VOLT/PH/Hz | SEER | HSPF | ACCESSORIES |
|-----------|-------------|-----------------|--------------|--------------|--------------|-----|------|---------------------|------|------|-------------|
| | MODEL # | CAPACITY (BTUH) | WEIGHT (LBS) | MODEL # | WEIGHT (LBS) | MCA | MOCF | | | | |
| AHU/ACC-1 | MSZ-AG9NA | 9000 | 23 | MUZ-AG9NA | 75 | 13 | 19 | 208/1/60 | 17.0 | 8.2 | 1,2 |

- NOTES:
 1. UNIT SELECTION BASED ON MITSUBISHI
 2. ALL REMOTE CONDENSING UNITS SHALL BE SECURELY MOUNTED ON EQUIPMENT CURBS FLASHED TO ROOF.
 3. ALL REFRIGERANT PIPING SHALL BE SIZED AND INSTALLED PER MANUFACTURERS RECOMMENDATIONS.
 4. AIR CONDITIONING UNITS ACC-1 AND AHU-1 SHALL BE OF THE SAME MANUFACTURER.

- ACCESSORIES:
 1. PROVIDE LOW AMBIENT CONTROL.
 2. REMOTE MOUNTED TEMPERATURE CONTROLLER.

ELECTRIC UNIT & CEILING HEATER SCHEDULE

| UNIT ID. | MANUFACTURER | MODEL NO. | BTUH | MOUNTING | CONTROL | ELECTRICAL DATA | | | | NOTES |
|----------|--------------|-----------|--------|---------------------|---------|-----------------|-------|---|------|-----------|
| | | | | | | KW | VOLTS | # | AMPS | |
| CUH-1 | BERKO | FFCH-54B | 6,800 | SURFACE | EMS | 2.0 | 208 | 1 | 9.6 | 1,2,3,4,5 |
| CUH-2 | BERKO | FFCH-55B | 17,100 | RECESSED IN CEILING | EMS | 5.0 | 208 | 3 | 13.9 | 1,2,3,4,5 |

- NOTES:
 1. ACCEPTABLE ALTERNATE INDEECO (CCI SERIES), OR Q-MARK (CDF SERIES)
 2. PROVIDE FACTORY-INSTALLED 24-VOLT CONTROL TRANSFORMER. EC TO PROVIDE 24-VOLT HOLDING COIL CONTROL RELAY.
 3. COLOR SHALL BE WHITE.
 4. PROVIDE FACTORY-INSTALLED DISCONNECT SWITCH.
 5. FIELD CONVERT WIRING AS DIRECTED IN INSTALLATION MANUAL FOR OPERATION INDICATED.

GAS FIRED UNIT HEATER SCHEDULE

| UNIT ID. | MANUFACTURER | MODEL NO. | BTUH | MOUNTING | CONTROL | ELECTRICAL DATA | | | | NOTES |
|----------|--------------|-----------|--------|-----------|---------|-----------------|-------|---|------|-------|
| | | | | | | KW | VOLTS | # | AMPS | |
| GUH-1 | REZNR | UDAS-75 | 75,000 | SUSPENDED | EMS | 0.4 | 120 | 1 | 3.3 | 1,2,3 |

- NOTES:
 1. WITH 60" DOWNTURN NOZZLE.
 2. UNIT CONTROLLED DIRECTLY VIA EMS VIA FACTORY-INSTALLED 24-VOLT CENTRAL TRANSFORMER.
 3. ACCEPTABLE ALTERNATE MANUFACTURERS ARE STERLING OR LENNOX. LENNOX IS APPROVED ONLY FOR 100MBH AND UP.

EXHAUST FAN SCHEDULE

| UNIT ID. | MANUFACTURER | MODEL NO. | TYPE | DRIVE | CFM | EXT. S.P. IN. WG | ACCESSORIES | INTERLOCKED WITH | SONES | FAN RPM | MOTOR | | | WEIGHT LBS | NOTES |
|----------|--------------|-----------|--------------|-------|-----|------------------|-------------|-------------------|-------|---------|-------|-------|---|------------|-------|
| | | | | | | | | | | | HP | VOLTS | # | | |
| EF-1 | GREENHECK | GB-091-4 | ROOF EXHAUST | BELT | 650 | 0.75 | 1 | EMS VIA CONTACTOR | 10.3 | 1556 | 1/4 | 120 | 1 | 85 | 1 |
| EF-2 | | | | | | | | | | | | | | | |
| EF-3 | GREENHECK | GB-081-4 | ROOF EXHAUST | BELT | 250 | 0.5 | 1 | | 8.5 | 1556 | 1/4 | 120 | 1 | 50 | 1 |
| EF-4 | GREENHECK | GB-081-4 | ROOF EXHAUST | BELT | 150 | 0.5 | 1 | EMS VIA CONTACTOR | 5.7 | 1247 | 1/4 | 120 | 1 | 50 | 1 |
| EF-5 | GREENHECK | GB-081-4 | ROOF EXHAUST | BELT | 250 | 0.5 | 1 | EMS DIRECT | 8.5 | 1556 | 1/4 | 120 | 1 | 50 | 1,2 |
| EF-6 | GREENHECK | GB-081-4 | ROOF EXHAUST | BELT | 135 | 0.5 | 1 | | 5.7 | 1247 | 1/4 | 120 | 1 | 50 | 1 |

- ACCESSORIES:
 1. FAN SHALL HAVE MANUFACTURER SUPPLIED ROOF CURB, BACK DRAFT DAMPER, BIRD AND INSECT SCREEN AND ELECTRICAL DISCONNECT.

- NOTES:
 1. ACCEPTABLE ALTERNATE MANUFACTURERS ARE PENNBARRY, COOK, OR BREIDERT.
 2. EC TO PROVIDE 24-VOLT HOLDING COIL CONTROL RELAY.

ROOFTOP UNIT SCHEDULE (NATURAL GAS)

| TAG NO. | MANUFACTURER | MODEL # | NOMINAL CAPACITY (TONS) | SUPPLY FAN | | | DX COOLING COIL DATA | | HEAT | | ELECTRIC VOLT/PH/Hz | MCA | MOCF | IEER (SEER) | OPERATING WEIGHT LBS | CCD WEIGHT LBS | NOTES | | | |
|---------|--------------|-----------|-------------------------|------------|--------|--------|----------------------|----------------------|----------|-----|---------------------|---------|------|-------------|----------------------|----------------|-------|---------|-----------------|-----------------|
| | | | | TOTAL CFM | OA MIN | OA MAX | E.S.P. IN. WG | TOTAL CAPACITY (MBH) | SENSIBLE | IN | | | | | | | | MBH OUT | COMP RLA (EACH) | FAN HP |
| RTU-1 | LENNOX | LGH102H4 | 8.5 | 3400 | 0 | 850 | 0.8 | 103.8 | 78.9 | 240 | 192 | 2 @ 6.2 | 3 | 460V/3/60 | 22 | 25 | 12.9 | 1565 | 200 | 1,2,3,4,5,6,7,8 |
| RTU-2 | LENNOX | LGH102H4 | 8.5 | 3400 | 0 | 850 | 0.8 | 103.8 | 78.9 | 240 | 192 | 2 @ 6.2 | 3 | 460V/3/60 | 22 | 25 | 12.9 | 1565 | 200 | 1,2,3,4,5,6,7,8 |
| RTU-3 | LENNOX | LGH102H4 | 8.5 | 3400 | 850 | 850 | 0.8 | 103.8 | 78.9 | 240 | 192 | 2 @ 6.2 | 3 | 460V/3/60 | 22 | 25 | 12.9 | 1565 | 200 | 1,2,3,4,5,6,7,8 |
| RTU-4 | LENNOX | LGH102H4 | 8.5 | 3400 | 0 | 850 | 0.8 | 103.8 | 78.9 | 240 | 192 | 2 @ 6.2 | 3 | 460V/3/60 | 22 | 25 | 12.9 | 1565 | 200 | 1,2,3,4,5,6,7,8 |
| RTU-5 | LENNOX | LGH072H4B | 6 | 2400 | 650 | 650 | 0.8 | 77.2 | 57.9 | 105 | 84 | 9.7 | 1 | 460V/3/60 | 16 | 25 | 12.0 | 980 | N/A | 1,2,3,4,5,6,7,8 |

- NOTES:
 1. INSTALL MANUFACTURER SUPPLIED ROOF CURB AND BURGLAR BARS.
 2. UNIT SHALL BE FURNISHED WITH BAROMETRIC RELIEF DAMPERS, FILTER RACK, HAIL GUARD, FILTERS AND BURGLAR BARS.
 3. SMOKE DETECTORS AND SAMPLING TUBE TO BE FURNISHED BY LENNOX AND FACTORY INSTALLED IN THE SUPPLY AND RETURN AIR STREAM. SMOKE DETECTOR REMOTE TEST/RESET STATION TO BE FURNISHED BY LENNOX AND FIELD INSTALLED IN THE LOCATION SHOWN ON THE DRAWINGS BY THE E.C. ALL SMOKE DETECTOR WIRING BY OTHERS.
 4. UNIT SHALL BE VERTICAL DISCHARGE.
 5. MODULATING ECONOMIZER WITH OUTDOOR AIR HOOD, ALL NECESSARY WIRING, GLOBAL ECONOMIZER CONTROL, AND SENSORS ARE FACTORY INSTALLED BY LENNOX. PACKAGED L SERIES UNITS SHALL HAVE FACTORY INSTALLED CONTROLS. INSTALLING CONTRACTOR SHALL INSTALL ALL NECESSARY WIRING AND CONTROLS TO INTERFACE WITH THE EMS SYSTEM. SEE HVAC AND ELECTRICAL GENERAL NOTES AS WELL AS NOTES ON PME1.1, EMS1.1, AND SPECIFICATIONS IN THE PROJECT MANUAL.
 6. UNIT SHALL HAVE FACTORY INSTALLED CONVENIENCE ELECTRICAL OUTLET AND DISCONNECT SWITCH.
 7. HVAC UNITS SHALL BE PURCHASED FROM LENNOX NATIONAL ACCOUNTS EXECUTIVE STEVE FRICKE. TELEPHONE: 972-497-6788 EXPECT 8-10 WEEKS DELIVERY TIME.
 8. LENNOX SHALL FURNISH AND CONTRACTOR TO INSTALL DIFFUSER PACKAGE CONSISTING OF SUPPLY PLENUM, RETURN PLENUM, RETURN DUCT GRILLE, AND FOUR WAY SUPPLY STEP DOWN DIFFUSER WITH PRIME COAT. CONTRACTOR TO PROVIDE SUPPORTS AND CONNECTING DUCTWORK AND SHALL FIELD PAINT PER SPECIFICATIONS. DIFFUSER PACKAGE TO BE LENNOX/RSI PRODUCT.
 9. PROVIDE WITH LENNOX HUMIDITROL OPTION FOR L SERIES UNITS.

HVAC GENERAL NOTES

- All air moving devices, including but not limited to, air handling units, air conditioning units, and unit ventilators must comply with AMCA Standard 210 and ASHRAE Standard 62.
- Provide flexible connection on all duct connections to fans and other equipment.
- Duct sizes shown are clear inside dimensions.
- Provide turning vanes in all square elbows, unless otherwise noted.
- Provide volume damper on each branch take off from duct main and on each diffuser take off from branch duct or main.
- Flexible duct connections to registers, diffusers, etc. shall not exceed 6'-0" in length.
- Contractor shall cover open ended ductwork with 1/2" x 1/2" woven wire mesh.
- Unless otherwise noted on the drawings, all mechanical equipment within the contract limits shall be mounted on vibration isolators to prevent the transmission of sound to the building structure. Vibration isolators shall be in accordance with the specifications and an actual weight distribution of the equipment furnished. Deflections shall be noted on the equipment shop drawing submittals. Contractor shall provide all seismic and hurricane resistance provisions required by local code. Where required, provide details with calculations signed & sealed by a Structural Engineer licensed in the State.
- HVAC units are furnished with a smoke detector with sampling tube to be installed in the supply and return air stream as required by local code. Smoke detector indicator lights shall be visible from inside the building. HVAC Contractor shall install and Electrical Contractor shall wire smoke detectors.
- Balance all air systems as per specifications. HVAC Contractor shall be responsible to submit one signed and sealed testing and balancing report to the reviewing agency and one signed and sealed testing and balancing report to the local building official prior to project completion.
- Gas-fired equipment selections are based on altitudes up to 2000 feet above sea level. Equipment selections for altitudes over 2000 feet above sea level shall be checked and adjusted if required.
- Contractor shall provide decal for each rooftop HVAC unit, with minimum 4" high reflective letters, to identify each unit for maintenance purposes. Decal shall be placed on each unit adjacent to the unit power disconnect switch.
- Rooftop HVAC units shall be supplied with coastal package (coil coating, painted rails, etc.) when site is located within five (5) miles of the coast.
- Contractor shall install replacement filters furnished by Lennox in each unit following system startup and after project completion.
- Contractor shall startup equipment and test for all functionality (heating, cooling, ventilation, etc.) and all stages as a condition of final acceptance of the systems.
- For projects where either units other than Lennox are furnished (by Landlord, for example) or where existing units are to be reused, HVAC Contractor shall furnish smoke detector System Sensor #DH400ACDCP with sampling tube and remote test/reset station RTS451KEY and Electrical Contractor shall wire same.
- At the Contractor's discretion, direct drive exhaust fans may be used where belt drive fans are indicated, provided that 1) performance and characteristics are similar, 2) direct drive fans are provided with a solid state fan speed controller for field adjustment, and 3) changes affecting other contractors are done so at no additional cost to PETCO.
- To enable temporary cooling or heating via the return air sensor, refer to pages 32 & 38 "EOTO" control parameters, Block 6.01 & 6.17. Contact Brandon Sedlock or any other national accounts technical support person at 800-367-6285 for further instruction or programming for return air control.

HVAC SYMBOLS

| Identifier | Description |
|------------|---|
| | New Ductwork |
| | New Ductwork With 1" Acoustical Lining |
| | Existing Ductwork To Remain |
| | Existing Ductwork To Be Removed |
| | Volume Damper |
| | Fire Damper And Access Door |
| | Smoke Damper And Access Door |
| | Motor Operated Damper |
| | Equipment Type |
| | Equipment Number |
| | Cubic Feet Per Minute |
| | Connect New To Existing |
| | Supply Air Flow |
| | Exhaust Air |
| | Undercut Door |
| | Duct Smoke Detector |
| | 4 Way Ceiling Diffuser |
| | Diffuser Tag <input type="text"/> TYPE <input type="text"/> CFM |

MEP Engineer of Record
 Randall A. Nelson, P.E.
 14817 West 95th Street
 Lenexa, Kansas 66215
 Phone 913 322 5150

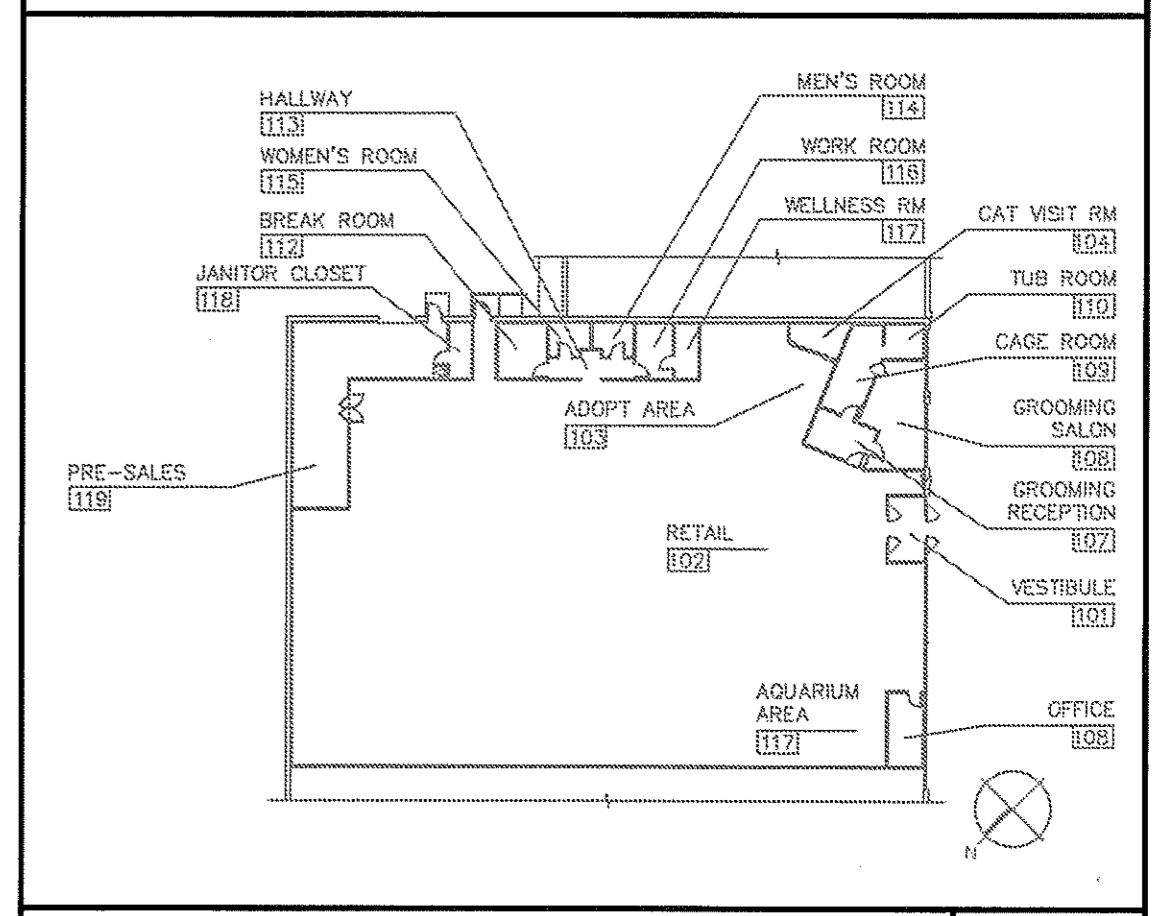
PETCO ANIMAL SUPPLIES STORES, INC.
 PETCO "CARY, NC"
 213 CROSSROADS BOULEVARD
 CARY, NC 27518

1000 BRENDA ROAD
 SAN DIEGO, CALIFORNIA 92121

| DISTRIBUTION | DATE |
|-------------------------|----------|
| 25% SUBMISSION | 01-15-10 |
| 75% SUBMISSION | 01-29-10 |
| 98% SUBMISSION | 02-25-10 |
| ISSUED FOR CONSTRUCTION | 02-26-10 |

| SRIM JOB # | PETCO P.M. JOB # |
|-------------|------------------|
| 09147 | 09277 |
| DRAWN | CHECKED |
| MTH/JCC/JMM | BJT |

DRAWING TITLE:
MECHANICAL GENERAL INFORMATION AND SCHEDULES
M1.1



KEY PLAN
 REF: **01**
 NO SCALE

CONTRACTOR(S) SHALL VERIFY EXISTING CONDITIONS AND CORRELATE DIMENSIONS PRIOR TO PROVIDING THE WORK DETAILED IN THESE DRAWINGS. AND SHALL PROMPTLY NOTIFY THE ARCHITECT OF ANY DISCREPANCIES. COPYRIGHT SELMA ARCHITECTS P.C. UNAUTHORIZED REPRODUCTION OR OTHER USE OF THIS DRAWING IS PROHIBITED.