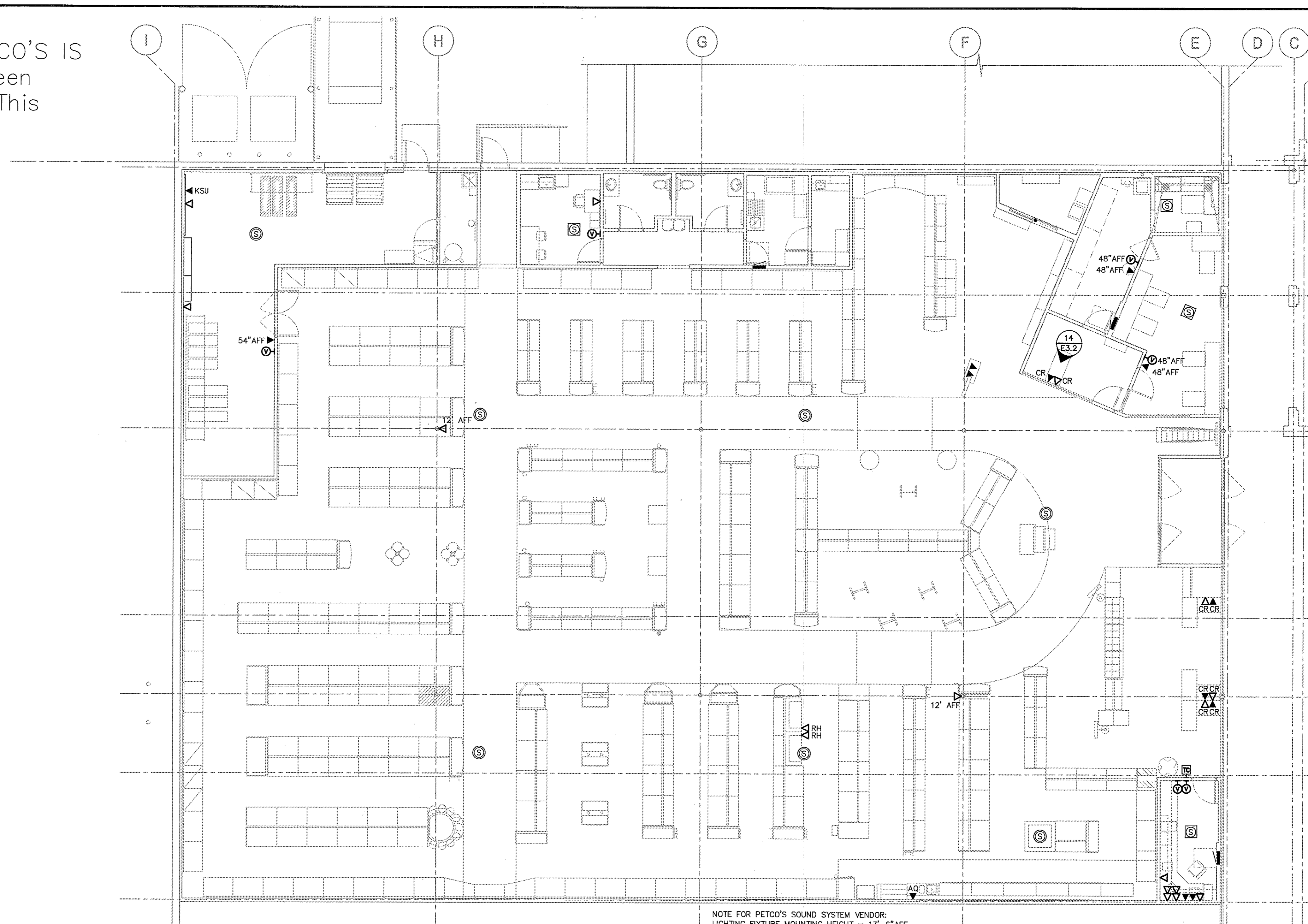


Information From PETCO'S IS  
Dept Not Has Been  
Incorporated Into This  
Submission



NOTE FOR PETCO'S SOUND SYSTEM VENDOR:  
LIGHTING FIXTURE MOUNTING HEIGHT = 13'-6\"/>

CONTRACTOR(S) SHALL VERIFY EXISTING CONDITIONS AND CORRELATE DIMENSIONS PRIOR TO PROVIDING THE WORK DETAILED IN THESE DRAWINGS.  
AND SHALL PROMPTLY NOTIFY THE ARCHITECT OF ANY DISCREPANCIES.  
COPYRIGHT SBML ARCHITECTS P.C. UNAUTHORIZED REPRODUCTION OR OTHER USE OF THIS DRAWING IS PROHIBITED.

MEP Engineer of Record  
Randall A. Nelson, P.E.  
14617 West 95th Street  
Lenexa, Kansas 66215  
Phone 913 322 5150

PETCO ANIMAL  
SUPPLIES STORES, INC.  
PETCO "CARY, NC"  
213 CROSSROADS BOULEVARD  
CARY, NC 27518



DISTRIBUTION	DATE
25% SUBMISSION	01-15-10
75% SUBMISSION	01-29-10
98% SUBMISSION	02-25-10
ISSUED FOR CONSTRUCTION	02-26-10

SBML JOB #	PETCO P.W. JOB #
09147	09277
DRAWN	CHECKED
MTH/JCC/JMM	BJT

DRAWING TITLE:  
SOUND AND  
COMMUNICATION  
SYSTEM

E2.3



NOTES FOR THIS DRAWING

- This drawing depicts responsibilities of multiple parties for the Sound And Communication systems. Generally, system outlets, devices, equipment, and wiring is by PETCO's Vendor. Provisions to facilitate installation, such as junction boxes, conduit and pull strings, are by the Electrical Contractor (E.C.).
- All wall mounted junction boxes and pull boxes shall have conduit and pull string by E.C. up and out wall at bottom of nearest bar joist (unless otherwise noted).
- Conduits in Pre-Sales Area may be run exposed.
- All exposed wiring (from junction box to device) shall be in flexible armor where subject to damage.
- All empty junction boxes shall have a cover plate.
- Sound system equipment and wiring furnished and installed by PETCO's Vendor.
- All dimensions, if shown, are from the inside face of masonry wall. Refer to 02/E3.2 for exact locations of P.O.S. area telephone and data outlets. Refer to 02/E3.2 and 04/E3.2 for exact locations of office area telephone and data outlets.

- Equipment in wet areas shall be suitable for wet locations.
- Verify exact locations and mounting heights of all devices with PETCO PM prior to installation. See 05/E1.1 for device mounting heights.
- All junction boxes installed exposed on sales floor and mounted below the bottom of the roof structure shall be surface-mounted style, no visible knockouts.
- E.C. to verify local requirements for low voltage systems wiring and provide conduit(s) where required.

SOUND SYSTEM LEGEND (W x H x D)

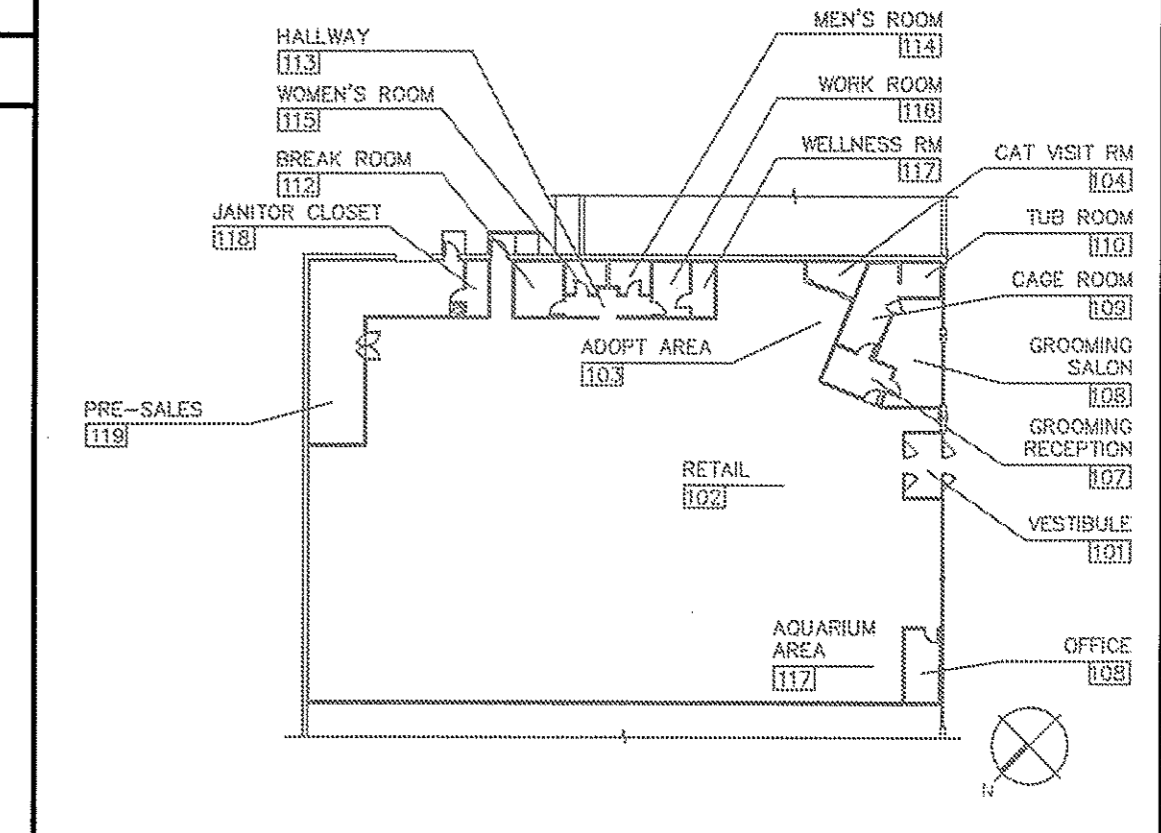
- ⊙ Sound system speaker mounted from bottom of bar joist.
- ⊠ Sound system speaker flush mounted in ceiling tile. Coordinate location with light fixtures and diffusers/grilles.
- ⊕ 2.125"x4"x2.5" junction box for sound system volume control. Mount at 42" AFF (except where specified otherwise) with 1/2" conduit up to joist space. Verify location in field.
- ⊕ 2"x4"x2" junction box with 1 1/2" extension ring for employee time clock. Mount at 42" AFF. with 1/2" conduit up above ceiling. Verify location in field.

COMMUNICATION SYSTEM LEGEND (W x H x D)

- ▼ Telephone outlet in 2"x4"x2" junction box with 3/4" conduit (or power pole for island fixtures, see E2.2) to above ceiling or to bottom cord of bar joist in open areas..
- ▼KSU KSU located next to Telephone Company M.P.O.E. at Main Telephone Terminal Board ("MTB"). See drawing E2.2 for location.
- ▼CR Telephone outlet mounted in cashier counter, with wiring fed through conduit in wall (or data channel in power pole for island fixtures). Refer to 04/E3.2.
- ▼AQ Telephone outlet. See sheet E3.1, large scale aquarium plan for height.
- ▼ Data outlet in 2"x4"x2" junction box with 3/4" conduit to above ceiling or to bottom cord of bar joist in open areas.
- ▼CR Data outlet mounted in cashier counter, with wiring fed through conduit in wall (or data channel in power pole for island fixtures). Refer to 04/E3.2.
- ▼RH Data outlet in 2"x4"x2" junction box with 3/4" rigid conduit to above ceiling or to bottom cord of bar joist, adjacent to power conduit in this location.

SOUND AND COMM SYSTEM PLAN 06

REF.: 1/8" = 1'-0"



KEY PLAN 01

REF.: NO SCALE