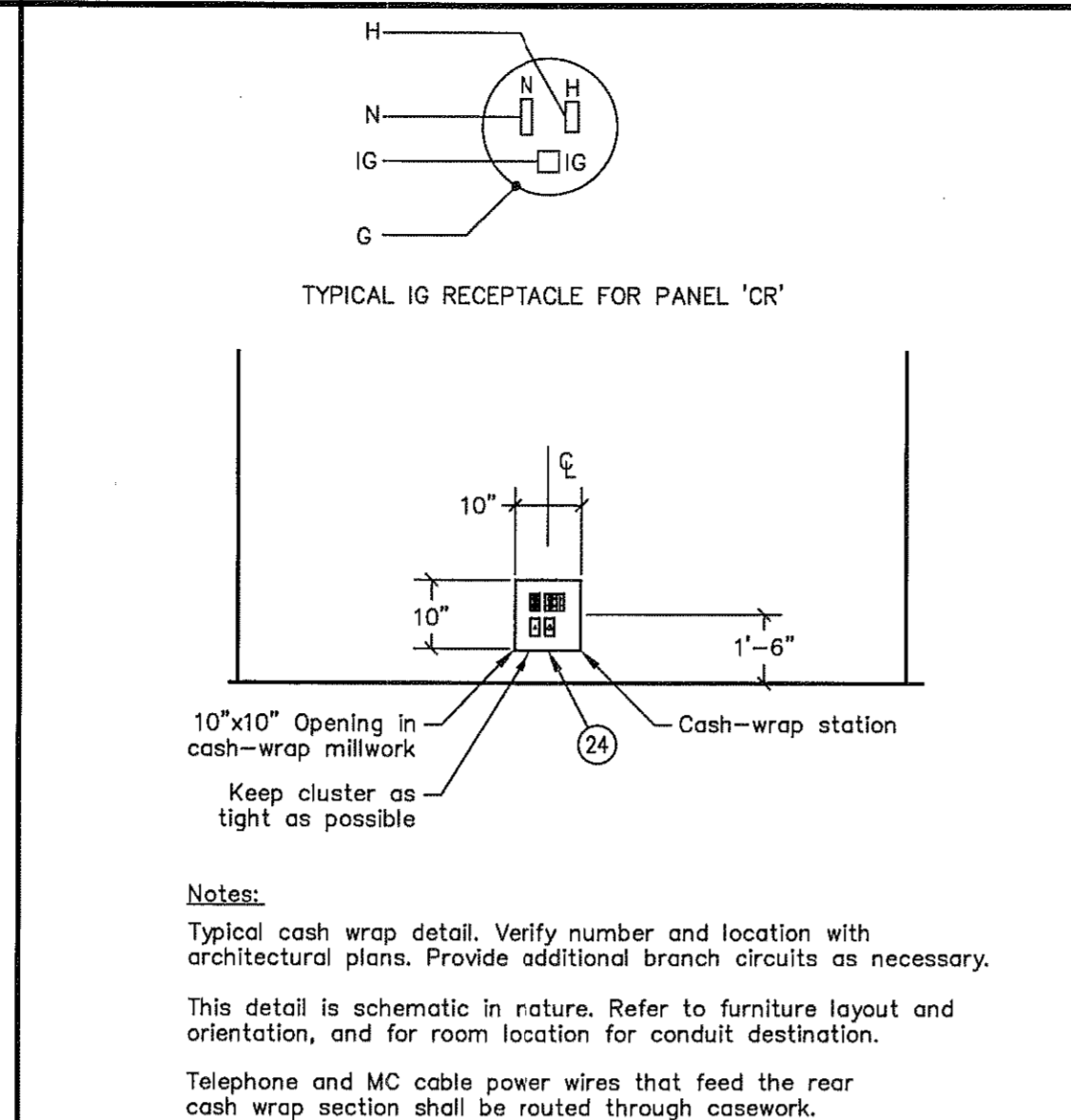
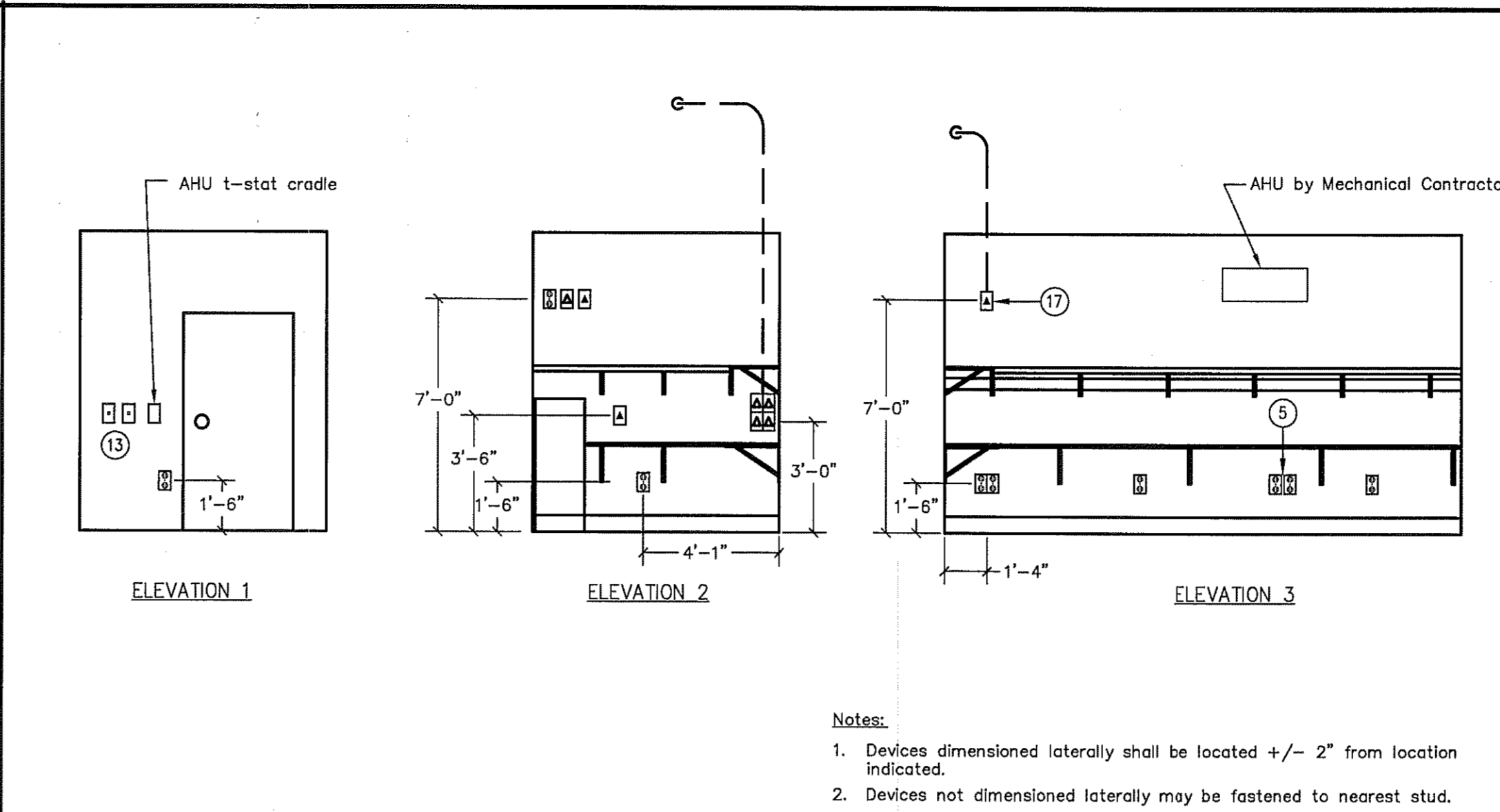


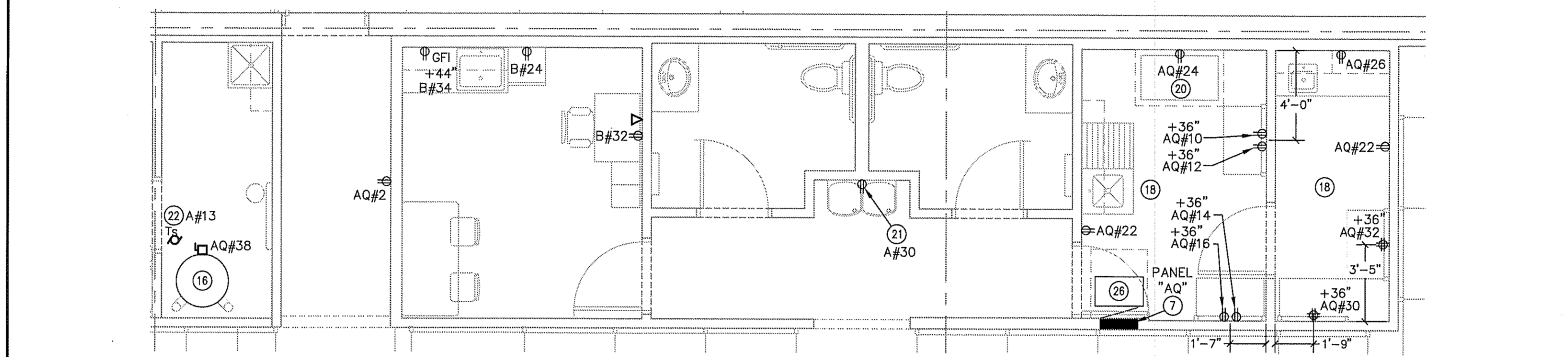
CONTRACTOR(S) SHALL VERIFY EXISTING CONDITIONS AND CORRELATE DIMENSIONS PRIOR TO PROVIDING THE WORK DETAILED IN THESE DRAWINGS, AND SHALL PROMPTLY NOTIFY THE ARCHITECT OF ANY DISCREPANCIES.
 ● COPYRIGHT SBILM, ARCHITECTS P.C. UNAUTHORIZED REPRODUCTION OR OTHER USE OF THIS DRAWING IS PROHIBITED.



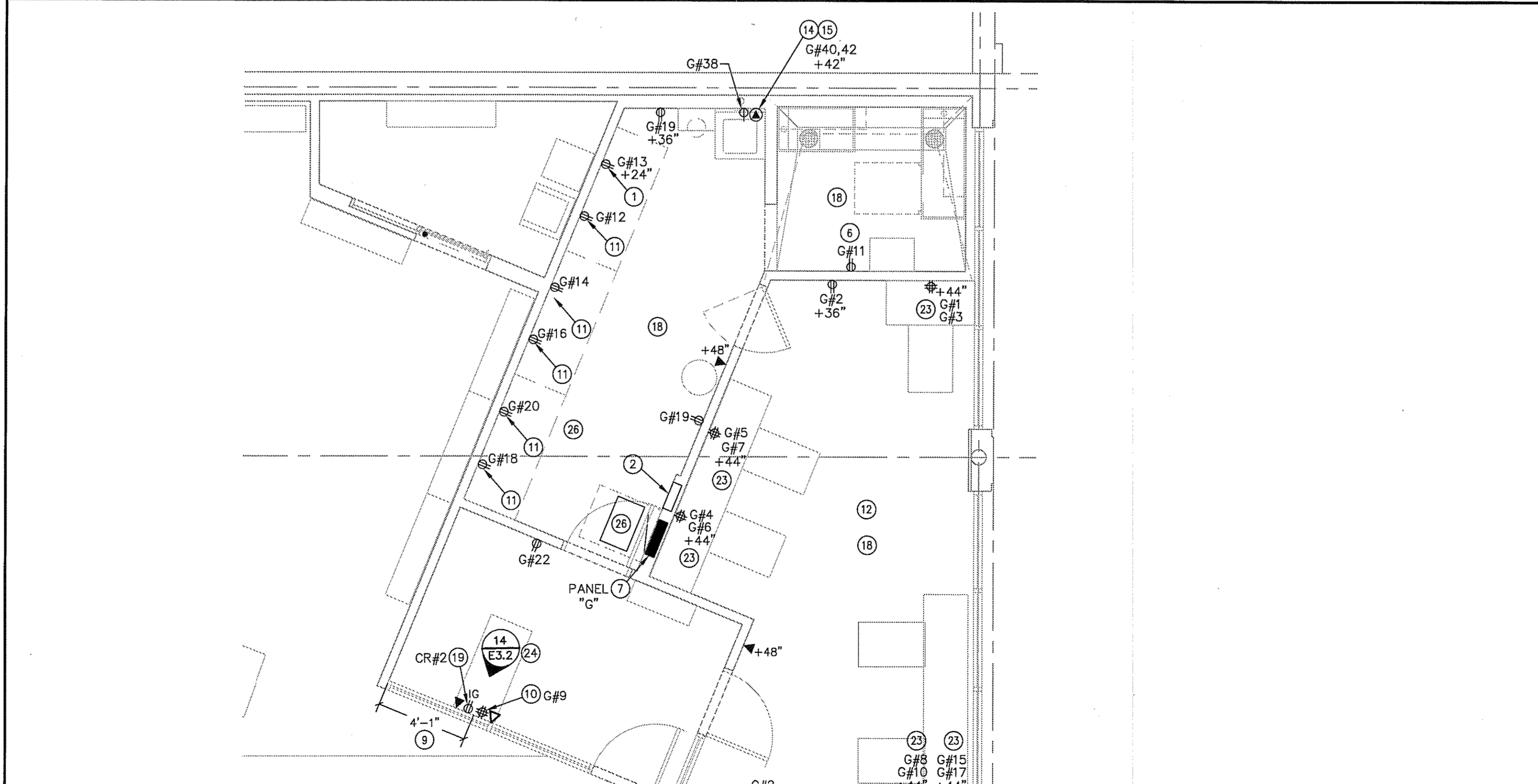
CASH-WRAP DEVICE MOUNTING DETAIL 14
 REF.: NO SCALE



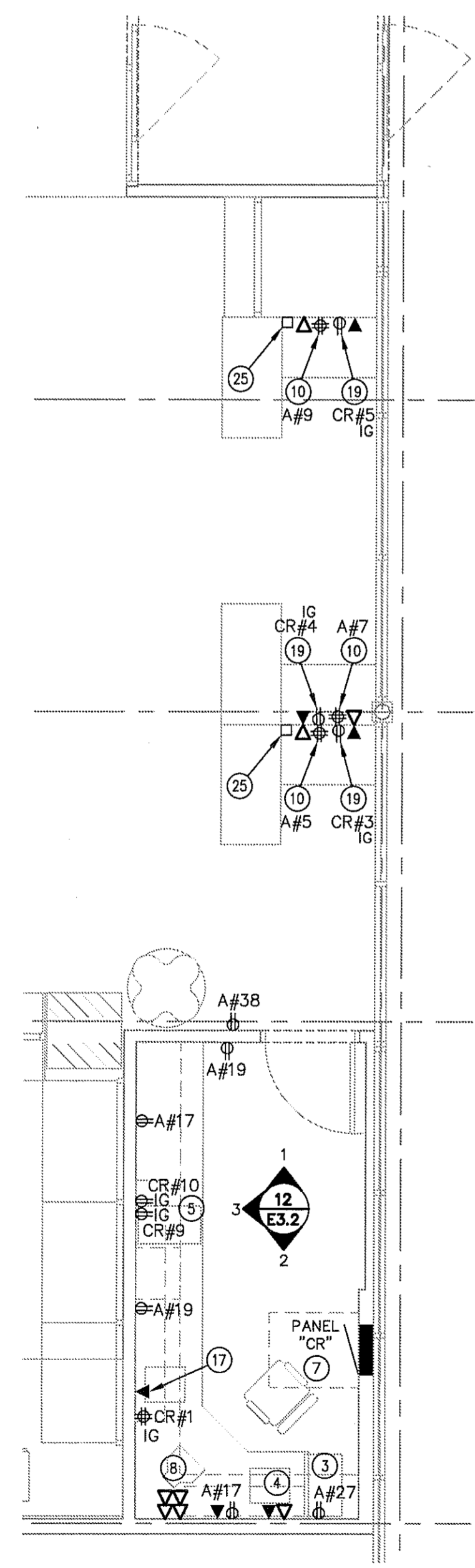
OFFICE WALL ELEVATIONS 12
 REF.: 02/E3.2



LARGE SCALE SUPPORT AREA PLAN 09
 REF.: 06/E2.2



LARGE SCALE GROOMING AREA PLAN 02
 REF.: 06/E2.2



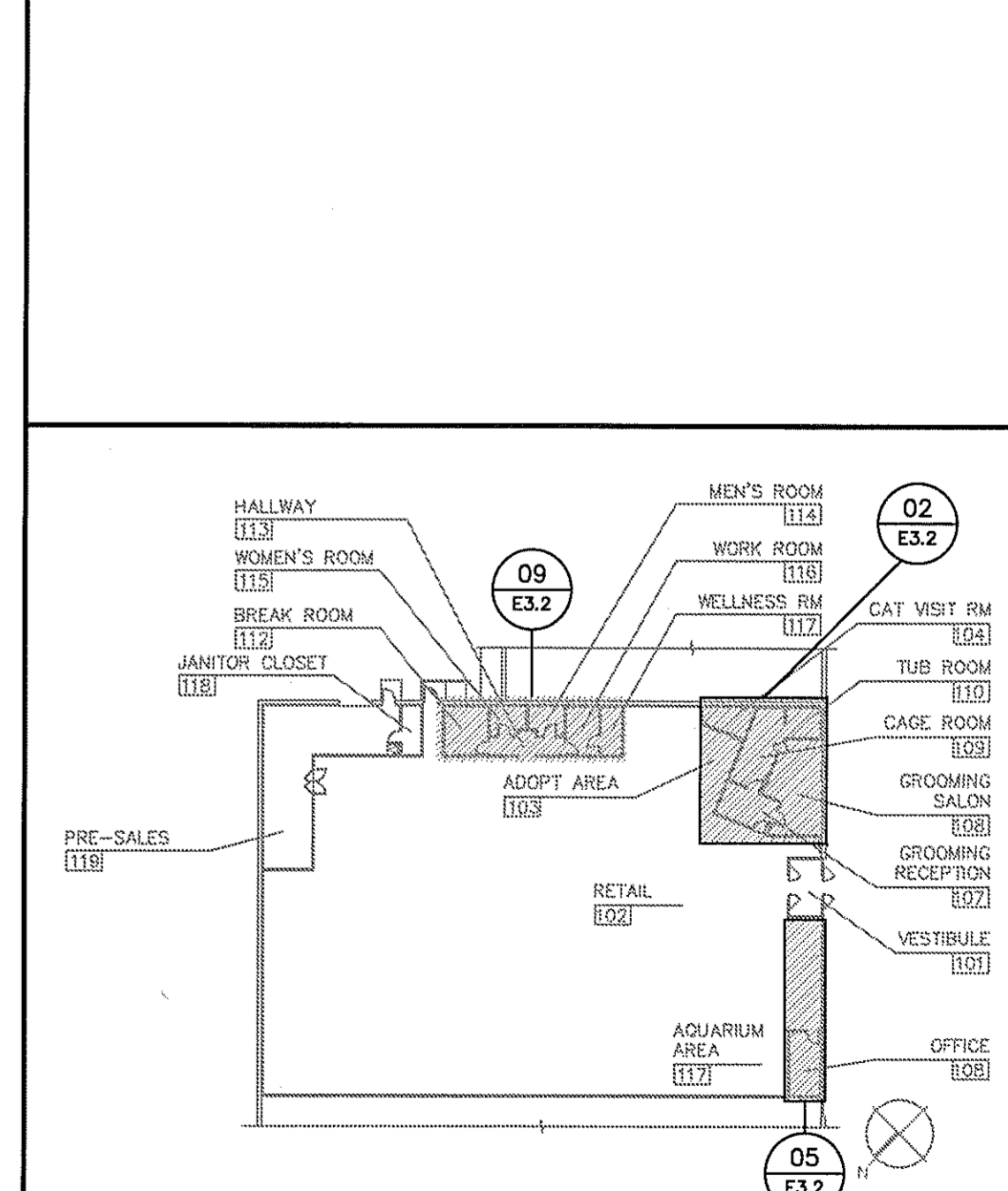
LARGE SCALE OFFICE / CASHWRAP PLAN 05
 REF.: 06/E2.2

NOTES FOR THIS DRAWING

- All power poles, other than the cashier area, are by the contractor. See sheet E2.2 for sales area power pole locations.
- All devices not specifically dimensioned may be located +/- 8" in either direction in plan from their appropriate location shown (to nearest stud or nearest CMU core).
- Contractor shall return to the site to make final connections to PETCO's equipment as necessary.

KEYNOTES (SYMBOLS ①, ② ETC.)

- Dedicated NEMA 5-20R receptacle for fan cage G#13, 24" AFF.
- Timer assembly by Integrated Power And Control Assembly manufacturer. Wire (T) circuits as shown on panelboard 'G' schedule to timers. One timer for each circuit. Label each timer for circuit number. Mount such that centerline of box is at 48" AFF.
- Sound system 7'-0" AFF, verify exact location in field.
- Equipment for sound system at 7'-0". Verify location in field.
- Duplex receptacles under the counter for security equipment. Circuit as shown.
- Weatherproof receptacle with in-use cover. Intermatic #WP1000C, 3/4" cover depth. Mount at 48" AFF.
- Coordinate location of this electric panel with provisions for other trades, such as wood blocking for General Contractors use.
- Data outlets in this area shall be mounted 36" AFF. Conduits to terminate in free air at bottom of roof structural members of Retail side of Manager's Office wall.
- Dimension indicated is to centerline of device cluster. See 14/E3.2.
- Junction box with quad outlet for light fixture, and other general outlet circuit.
- Dedicated receptacle for 2-hose dryer (typical). 84" AFF to bottom of device.
- Devices in this room shall have stainless steel device cover plates.
- Junction boxes for sound system volume controls. Refer to Sheet E2.3 for further information.
- Washer/dryers provided in one of two configurations: 3-pole, 4-wire and 3-pole, 3-wire. The 3-pole, 4-wire configuration (two hot, one neutral, one ground) comes with a NEMA 14-30P plug. EC to use a NEMA 14-30R receptacle. The 3-pole, 3-wire configuration (two hot, one ground) comes with a NEMA 10-30P plug. EC to use a NEMA 10-30P receptacle. Since either may be provided without advanced warning, EC to pull 5#10 AWG wires in either case.
- Contractor to attach PETCO provided cord kit to appliance.
- Disconnect for domestic hot water heater. Provide #3/0 bonding jumper between hot and cold water pipes.
- Single gang junction box with 3/4" conduit to bar joint for analog telephone.
- Convenience receptacles in this room are GFCI protected at the electrical panel. Label circuits on all devices.
- Dedicated circuit for cash register and card reader. All 'CR' circuits are isolated ground.
- This receptacle is dedicated to the work room freezer. Confirm location with final fixture plan.
- Outlet for water cooler to be gray in color.
- Thermal switch, Square D #2510 class or equal.
- Quad receptacle to be mounted in center of top tie band, 44" to center of box. Coordinate with Architectural elevation sheet A9.2.
- Power, telephone and data provisions for cash-wrap station to be located on wall to coordinate with 10' x 10' opening at the end of the cash-wrap millwork. Keep cluster tight within 10' x 10' area. Coordinate with 14/E3.2 and architectural sheet A2.3. Move device cluster horizontally as necessary within the 10" square designated area to avoid conflict with wall studs.
- Dual channel power pole furnished by PETCO vendor, installed and wired by E.C. Segregate power wiring from data and telephone. See detail 13/E3.1.
- Install transformer above ceiling at location shown. Refer to detail 17 on sheet E1.3 for more information.



KEY PLAN 01
 REF.: NO SCALE

MEP Engineer of Record
 Randall A. Nelson, P.E.
 14817 West 95th Street
 Lenexa, Kansas 66215
 Phone 913 322 5150

PETCO ANIMAL SUPPLIES STORES, INC.
 PETCO "CARY, NC"
 213 CROSSROADS BOULEVARD
 CARY, NC 27518



DISTRIBUTION:	DATE:
25% SUBMISSION	01-15-10
75% SUBMISSION	01-29-10
98% SUBMISSION	02-25-10
ISSUED FOR CONSTRUCTION	02-26-10

SBILM JOB#	PETCO P.M. JOB#
09147	09277
DRAWN: MTH/JCC/JMM	CHECKED: BJT

DRAWING TITLE:
 ELECTRICAL LARGE SCALE PLANS AND DETAILS
E3.2