



RENOVATIONS TO HEALTH BUILDING (2010)

ST. JOHNS RIVER COMMUNITY COLLEGE
 PALATKA CAMPUS, PALATKA, FLORIDA
 BID-SJRCC-2010-08

DISTRICT BOARD OF TRUSTEES

W.W. "BUNKY" ROBERTS
 LARRY R. LANCASTER
 JOHN NELSON, JR.
 ROB BRADLEY
 DIANE P. LEONE
 PRESTON B. SLOAN
 CARL C. BECK
 JOE H. PICKENS, J.D.

CHAIRMAN
 VICE CHAIRMAN

EXECUTIVE SECRETARY

ADMINISTRATION

JOE H. PICKENS, J.D.

PRESIDENT

MELISSA C. MILLER, J.D.

EXECUTIVE VICE PRESIDENT

GENERAL NOTES

GENERAL:

1. ALL WORK AND IMPROVEMENTS ARE CONFINED TO THE AREAS INDICATED IN THESE DRAWINGS. ALL WORK WILL BE INSTALLED BY A LICENSED CONTRACTOR AND THE APPROPRIATE LICENSED SUBCONTRACTORS IN STRICT ACCORDANCE WITH ALL GOVERNING CODES.

2. ALL WORK IS TO BE EXECUTED UNDER DIRECT SUPERVISION OF A CERTIFIED GENERAL CONTRACTOR. THE GENERAL CONTRACTOR SHALL VERIFY ALL SITE CONDITIONS, DIMENSIONS, AND COORDINATE ALL OPENINGS AND INSERTS WITH THE APPROPRIATE SUBCONTRACTORS. HANGING DEVICES SHALL BE INSTALLED SO AS NOT TO OVERLOAD THE ASSEMBLY OR ANY OTHER STRUCTURAL COMPONENTS. IT IS THE CONTRACTOR'S SOLE RESPONSIBILITY TO DETERMINE ERECTION PROCEDURE AND SEQUENCE TO ENSURE THE SAFETY OF THE BUILDING, ITS COMPONENTS, AND ALL PRESENT ON THE SITE.

DIMENSIONS: ALL DIMENSIONS AND ELEVATIONS SHOWN ON THE DRAWINGS SHALL BE VERIFIED BY THE CONTRACTOR TO INSURE THE PROPER INTERFACING WITH EXISTING CONDITIONS. IF ANY CONFLICT OCCURS BETWEEN ANY PART OF THESE DOCUMENTS THE CONTRACTOR IS TO NOTIFY THE ARCHITECT IMMEDIATELY. IF THE ARCHITECT IS NOT AFFORDED THE OPPORTUNITY TO CLARIFY OR MODIFY ANY CONFLICTS, THE CONTRACTOR ASSUMES RESPONSIBILITY FOR RESOLVING ANY PROBLEMS WHICH MAY HAVE DEVELOPED.

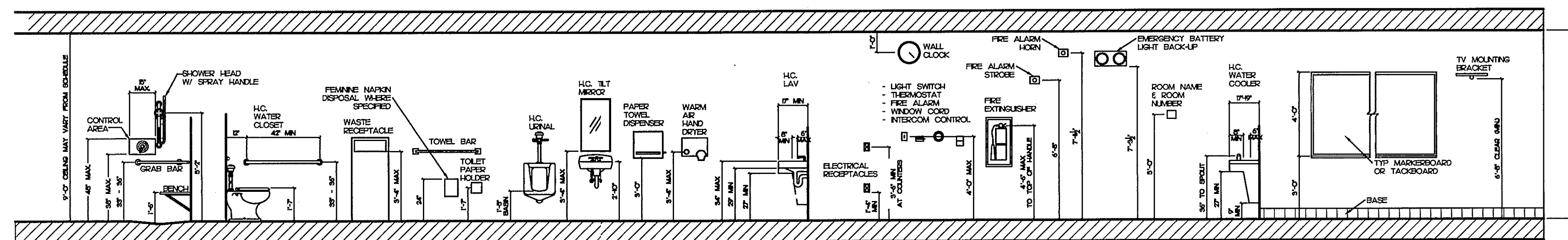
RESPONSIBILITY: IT IS THE CONTRACTOR'S SOLE RESPONSIBILITY TO DETERMINE ERECTION PROCEDURE AND SEQUENCE TO INSURE THE SAFETY OF THE BUILDING AND ITS COMPONENT PARTS DURING ERECTION. THIS INCLUDES BUT IS NOT LIMITED TO THE ADDITION OF WHATEVER TEMPORARY BRACING, GUYS, OR THE DOWNS THAT MAY BE NECESSARY. SUCH MATERIAL SHALL BE REMOVED AND SHALL REMAIN THE PROPERTY OF THE CONTRACTOR AFTER COMPLETION OF THE PROJECT. IT IS THE CONTRACTOR'S RESPONSIBILITY TO DETERMINE THE MEANS AND METHODS REQUIRED TO ACHIEVE THE INTENT OF THESE DRAWINGS.

CONFLICTS: WHERE CONFLICTS OCCUR BETWEEN THE SPECIFICATIONS, REFERENCED CODES, NOTES AND WORKING DRAWINGS, THE MOST STRINGENT REQUIREMENTS SHALL APPLY. IT IS THE CONTRACTOR'S SOLE RESPONSIBILITY TO NOTIFY THE ARCHITECT IMMEDIATELY OF ANY CONFLICTS FOR DIRECTION.

COORDINATION: GENERAL CONTRACTOR SHALL COORDINATE ALL OPENINGS AND INSERTS WITH THE APPROPRIATE SUBCONTRACTORS ACCORDING TO THE PLANS. SEE SHOP DRAWINGS FOR ALL SUPPORTING STRUCTURES AND INSERTS REQUIRED BY THE VARIOUS BUILDING SYSTEMS. ALL SUPPORT STRUCTURES AND HANGING DEVICES SHALL BE INSTALLED SO AS NOT TO OVERLOAD THE STRUCTURE OR ANY STRUCTURAL COMPONENT. THE CONTRACTOR SHALL BE RESPONSIBLE FOR THE SAFETY OF THE STRUCTURE AND ITS OCCUPANTS.

SUBMITTALS: THE REVIEW OF VARIOUS SUBMITTALS BY THE VARIOUS SUBCONTRACTORS AND PRE-ENGINEERED SYSTEMS ENGINEER OF RECORD WILL BE TO VERIFY THAT THE SUBMITTALS HAVE BEEN FURNISHED AND PREPARED BY A QUALIFIED PERSON THAT THE PREPARER HAS UNDERSTOOD THE INTENT OF THE DESIGN AND THE CONSTRUCTION DOCUMENTS. NO DETAILED REVIEW WILL BE MADE BY THE ARCHITECT AND ENGINEER. THE GENERAL CONTRACTOR SHALL CHECK AND STAMP THE SHOP DRAWINGS INDICATING THAT A THOROUGH REVIEW WAS CONDUCTED AND STAMPED FOR CONFORMANCE PRIOR TO FORWARDING THEM TO THE ARCHITECT. THE ARCHITECT / ENGINEER WILL REVIEW THE SHOP DRAWING SUBMITTAL ONCE AND IF FOUND NOT TO BE IN CONFORMANCE, THE SUBMITTAL WILL BE REJECTED. ADDITIONAL REVIEWS CAN BE PERFORMED FOR THE COST BURDEN DIRECTLY RELATED TO THE ADDITIONAL REVIEW. FOR COLOR SELECTION, THE CONTRACTOR IS TO SUBMIT ALL COLOR RELATED PRODUCTS AT ONE TIME TO INSURE CONTINUITY IN THE OVERALL COLOR SCHEME USED.

STANDARD MOUNTING HEIGHTS



INDEX TO THE DRAWINGS

COVER SHEET	
ARCHITECTURAL	
A-1	DEMOLITION PLANS
A-2	FLOOR, REFLECTED CEILING, & FLOOR TILE LAYOUT PLANS 'A'
A-3	FLOOR, REFLECTED CEILING, & FLOOR TILE LAYOUT PLANS 'B'
A-4	FLOOR, REFLECTED CEILING, & FLOOR TILE LAYOUT PLANS 'C'
A-5	ELEVATIONS AND SCHEDULES
ELECTRICAL	
E-1	ELECTRICAL OVERALL PLAN, LEGEND AND NOTES
E-2	ELECTRICAL DEMOLITION PLAN
E-3	ELECTRICAL LIGHTING PLAN
E-4	ELECTRICAL POWER AND SYSTEMS PLAN
E-5	ELECTRICAL SPECIFICATIONS

SET #25

STATEMENT OF COMPLIANCE: To the best of my knowledge, this set of DRAWINGS is complete and complies with the State Requirements for Educational Facilities, Current Addition.