

REVISION	BY

CRG ARCHITECTS/PALATKA, INC.  
 216 ST. JOHNS AVE. • PALATKA, FL 32177  
 40002604 386 325 0213 FAX: 386 328 6501

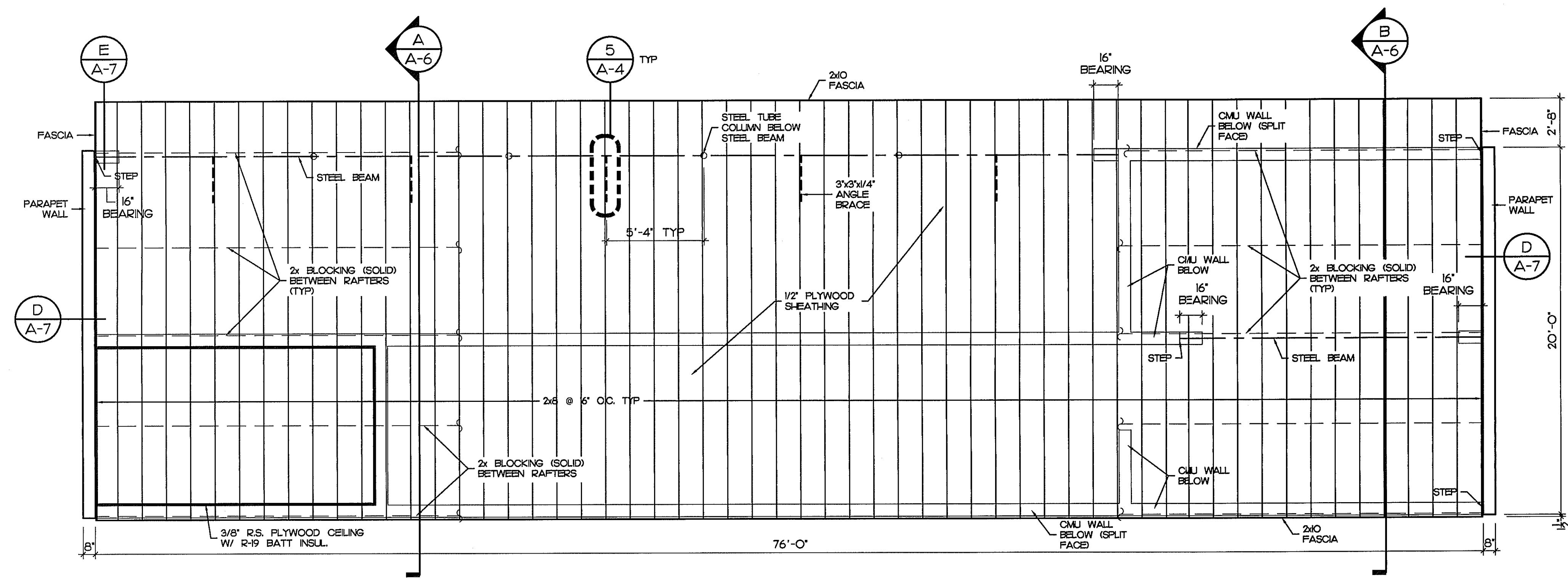
HOME DUGOUT  
 PLANS AND ELEVATIONS

MISCELLANEOUS ATHLETICS PROJECTS  
 ST JOHNS RIVER COMMUNITY COLLEGE  
 PALATKA, FLORIDA

Seal/Signature:  
 ROBERT C. GOODWIN  
 ARCHITECT. AR-9044

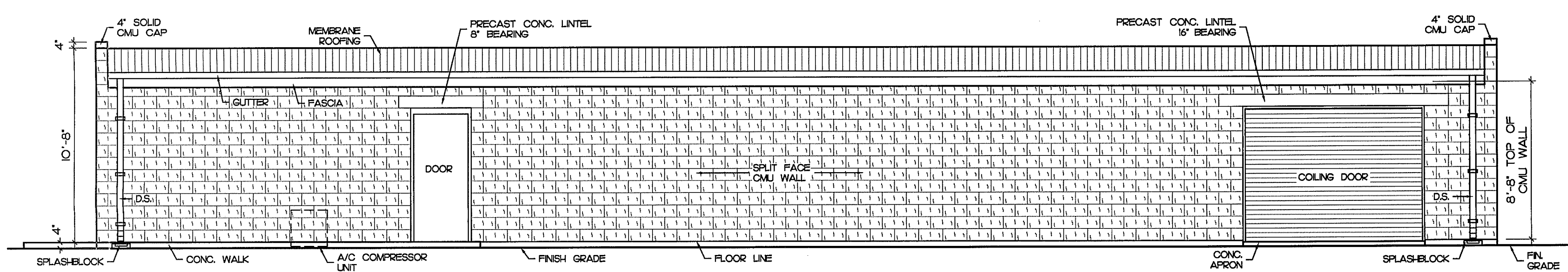
Date: 10-17-09  
 Scale: AS NOTED  
 Drawn: JCK  
 Job: OIS-HQ2  
 Sheet:

**A-4**  
 5 of 12 Sheets

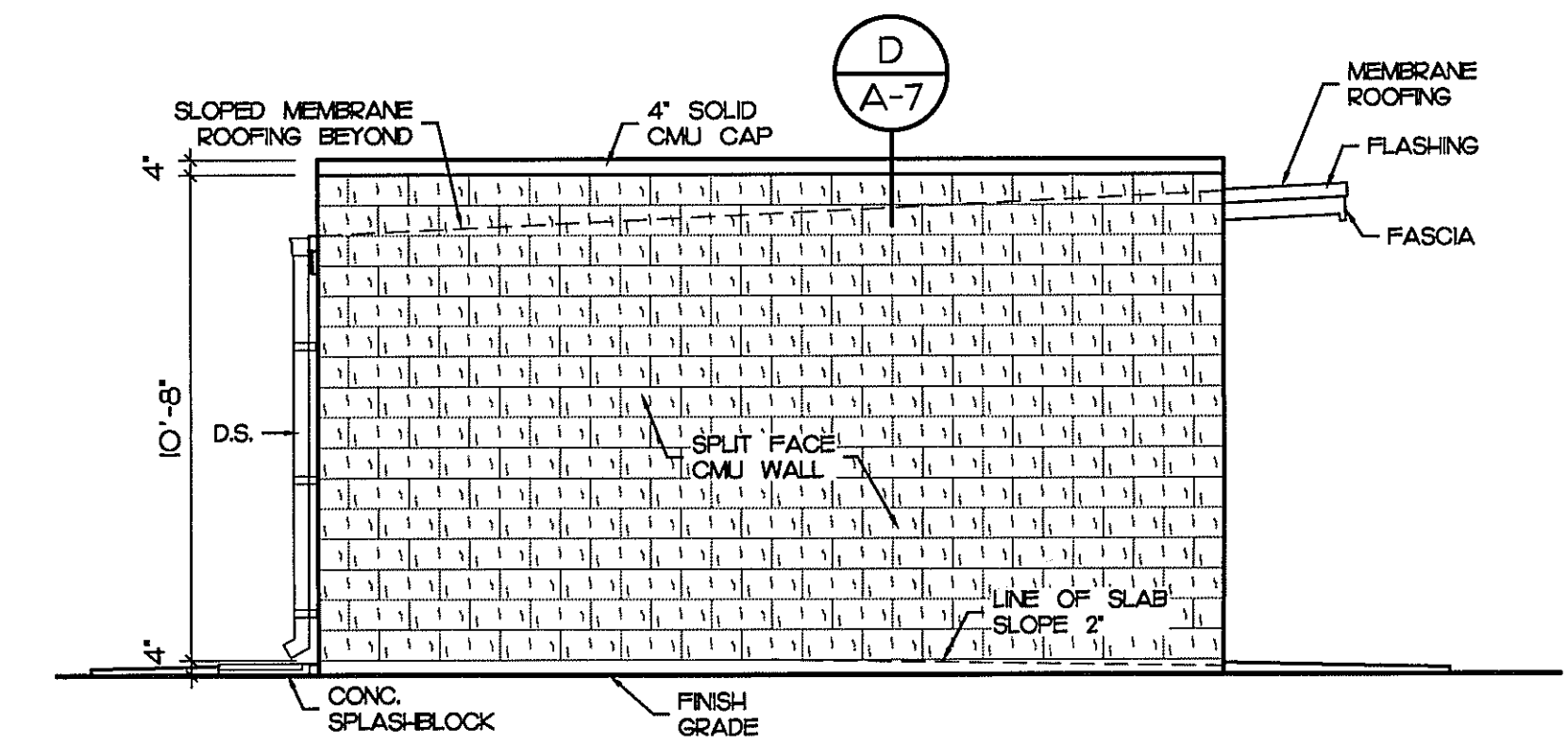


**ROOF FRAMING PLAN**  
 SCALE: 1/4" = 1'-0"

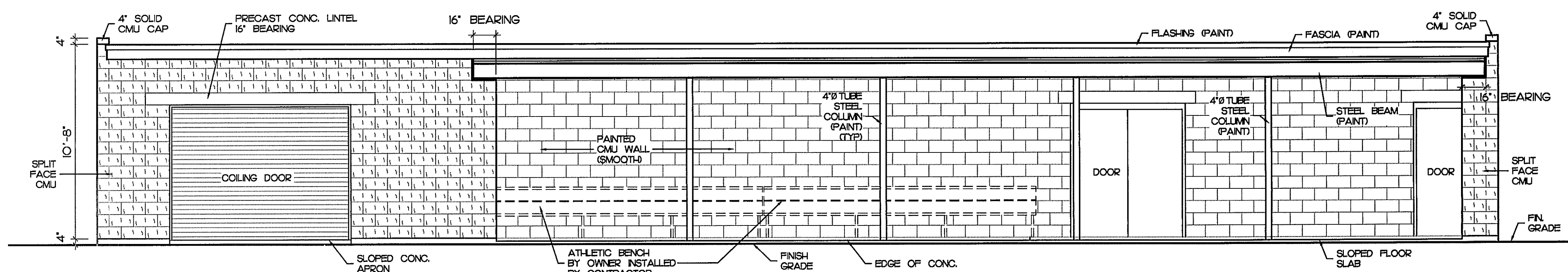
FINISH SCHEDULE	
NOTES:	1. ALL SPLIT FACE BLOCK SHALL BE SEALED WITH A CLEAR WATERPROOF SEALER.
	2. ALL SMOOTH FACE BLOCK SHALL BE PAINTED WITH EXTERIOR FLAT ENAMEL PAINT (UP TO TWO COLORS). COLOR SHALL BE SELECTED BY THE ARCHITECT.
	3. SOLID CMU CAP SHALL BE SEALED ON TOP WITH AN ELASTOMERIC COATING. COLOR SHALL BE SELECTED BY THE ARCHITECT.
	4. ALL EXPOSED RAFTERS AND SHEATHING AT DUGOUT AREAS SHALL BE STAINED WITH A TRANSPARENT WOOD STAIN.
	5. ALL FINISHED WOOD TRIM SHALL BE PAINTED. COLOR SHALL BE SELECTED BY ARCHITECT.
	6. ALL METAL DOORS AND DOOR FRAMES SHALL BE PRIMED AND PAINTED WITH GLOSS ENAMEL.
	7. COILING DOORS SHALL BE FACTORY FINISHED. COLOR SHALL BE SELECTED BY ARCHITECT.
	8. ALL STEEL SHALL BE PAINTED GLOSS ENAMEL. COLOR SHALL BE SELECTED BY ARCHITECT.



**BACK ELEVATION**  
 SCALE: 1/4" = 1'-0"

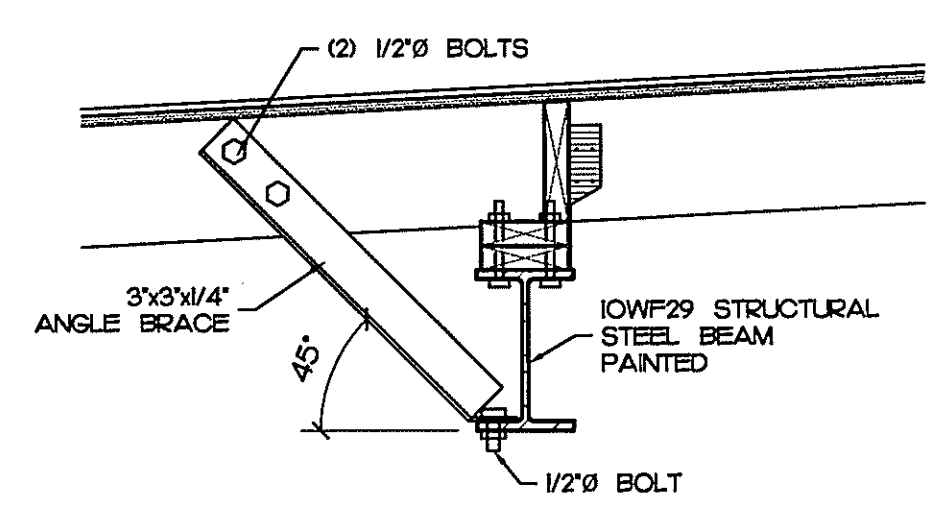


**SIDE ELEVATION**  
 SCALE: 1/4" = 1'-0"



**FRONT ELEVATION**  
 SCALE: 1/4" = 1'-0"

NOTE: EXTERIOR FACE OF ALL EXPOSED SPLIT-FACE CMU WALLS SHALL RECEIVE A CLEAR SILICONE WATER REPELLANT COATING (2 COATS)



**BRACE DETAIL**  
 SCALE: 1" = 1'-0"

6/19/2010 3:52:28 PM  
 COPYRIGHT © CRG ARCHITECTS PLOTTED: