

| REVISION | BY |
|----------|----|
| | |
| | |
| | |
| | |

CRG ARCHITECTS/PALATKA, INC.
 216 ST. JOHNS AVE. • PALATKA, FL 32177
 407-326-0204 • 326-0213 FAX 326-1401

AWAY DUGOUT
 PLANS AND ELEVATIONS

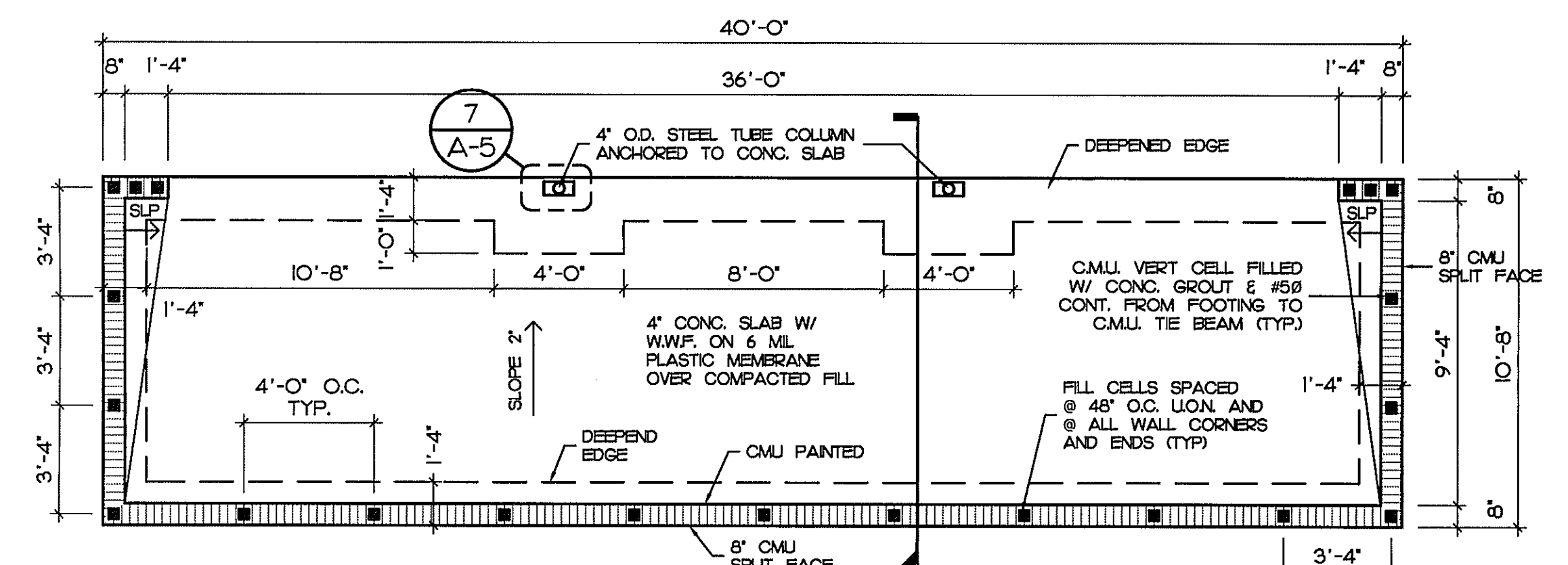
MISCELLANEOUS ATHLETICS PROJECTS
 ST. JOHNS RIVER COMMUNITY COLLEGE
 PALATKA, FLORIDA

Seal/Signature:
 ROBERT C. GOODWIN
 ARCHITECT, AR-30444

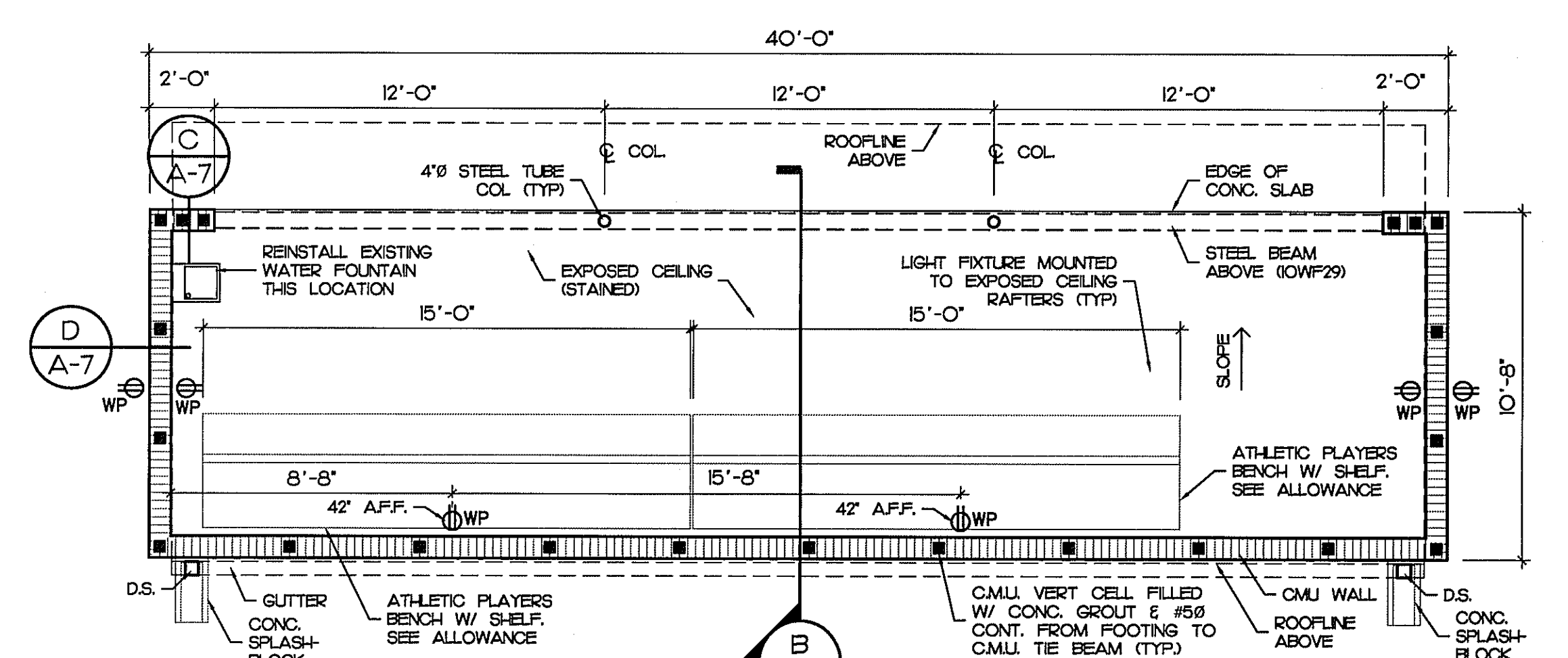
Date: 10-17-09
 Scale: AS NOTED
 Drawn: JCK
 Job: 015402
 Sheet:

A-5
 6 Of 12 Sheets

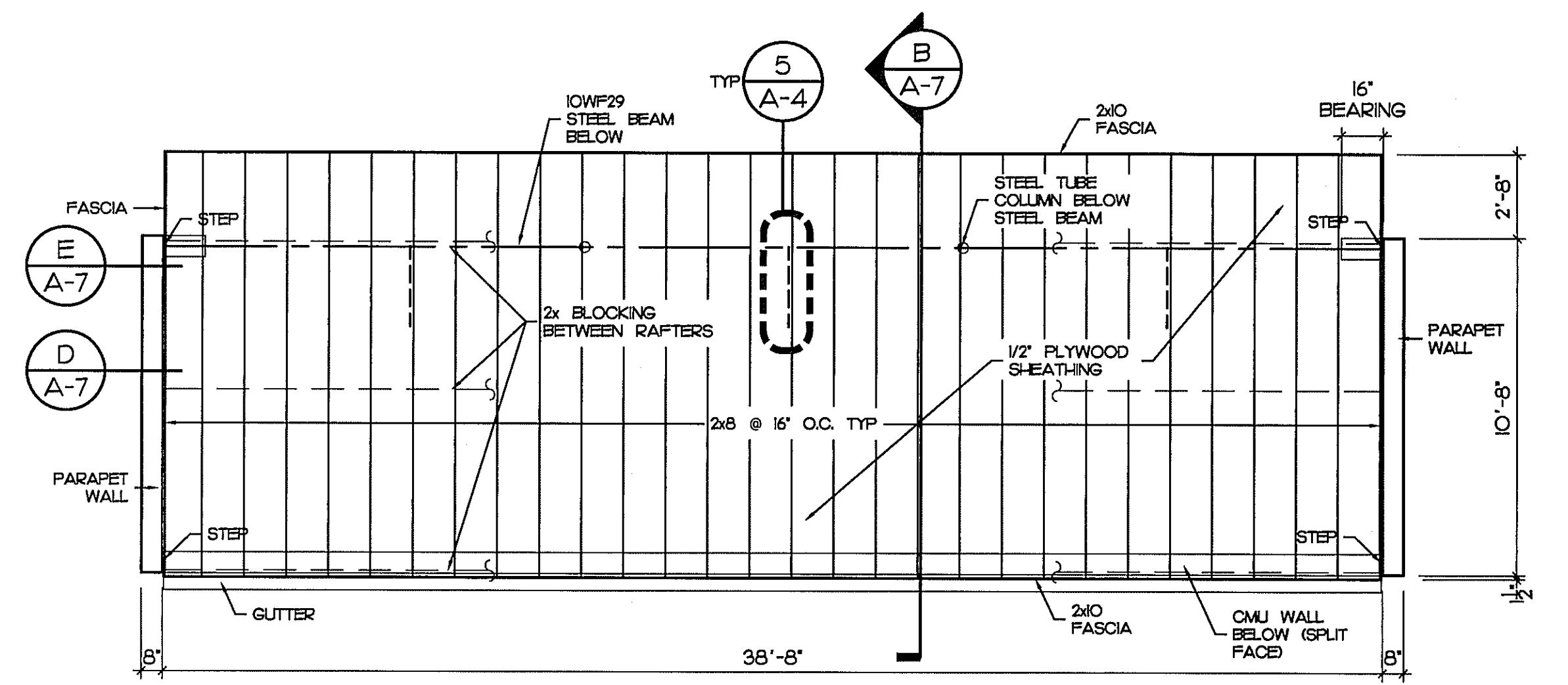
COPYRIGHT © CRG ARCHITECTS 6/19/2010 4:32:18 PM



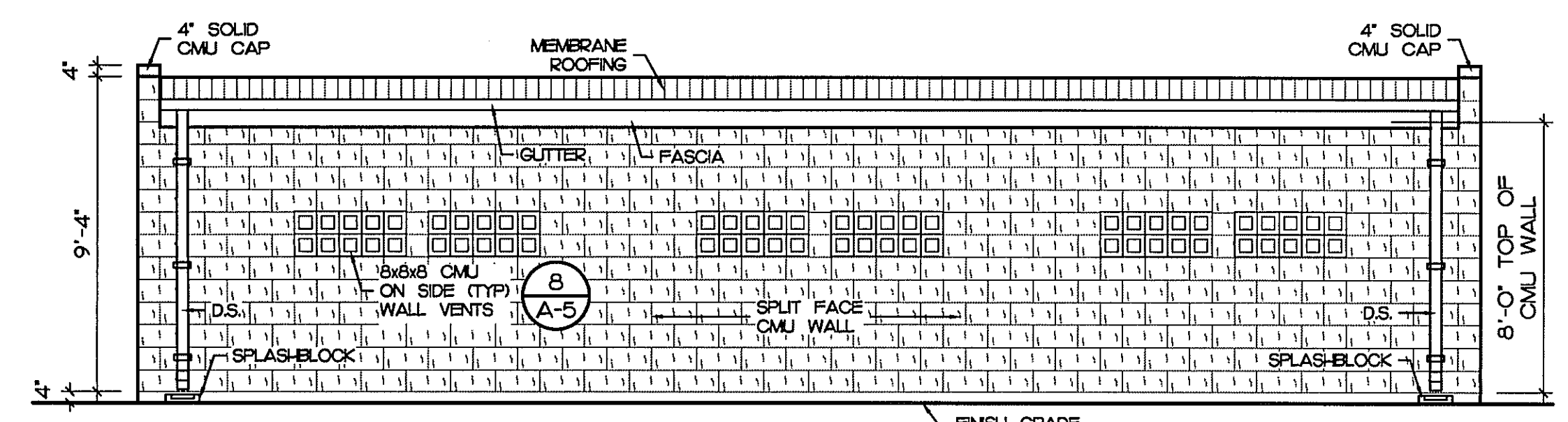
FOUNDATION PLAN 1
 SCALE: 1/4" = 1'-0" A-5



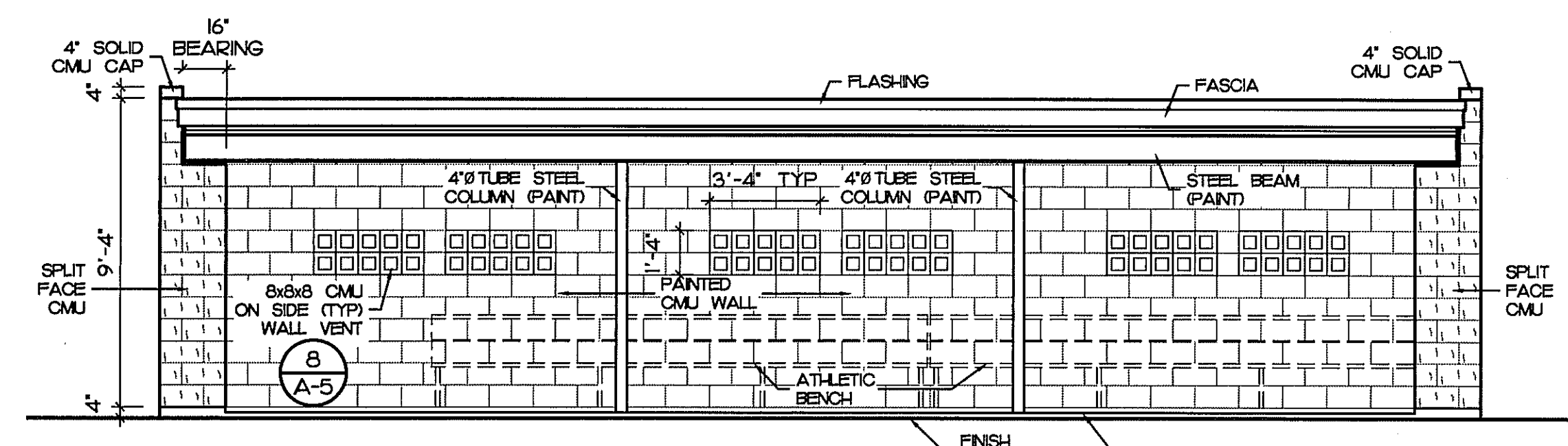
FLOOR PLAN 2
 SCALE: 1/4" = 1'-0" A-5



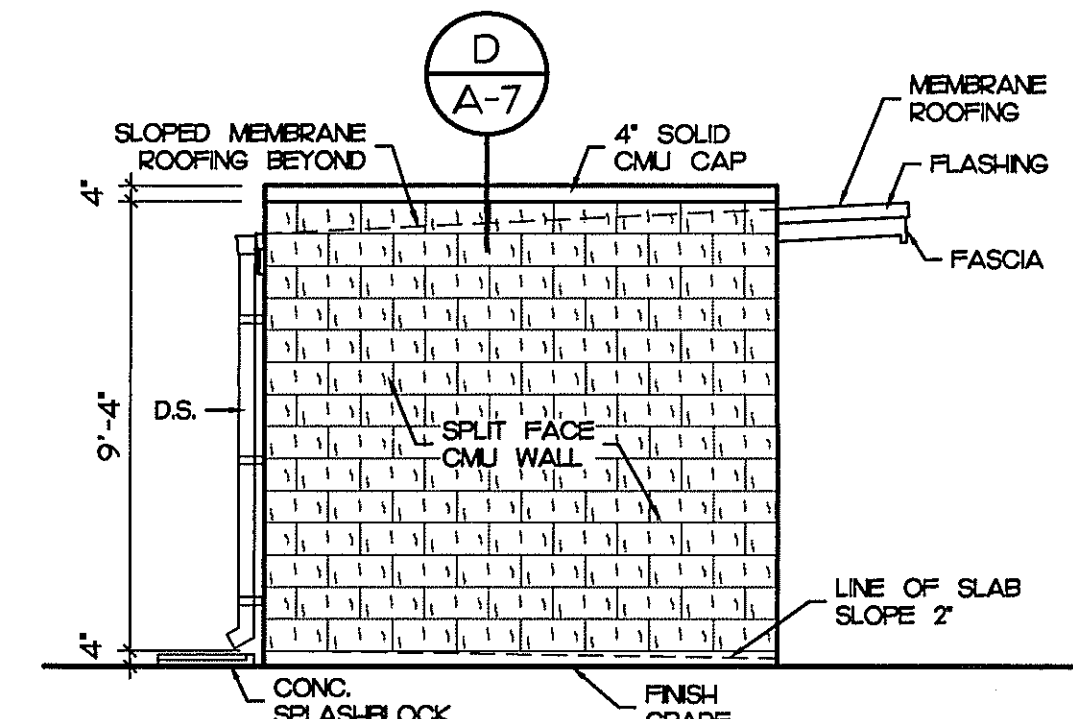
ROOF FRAMING PLAN 3
 SCALE: 1/4" = 1'-0" A-5



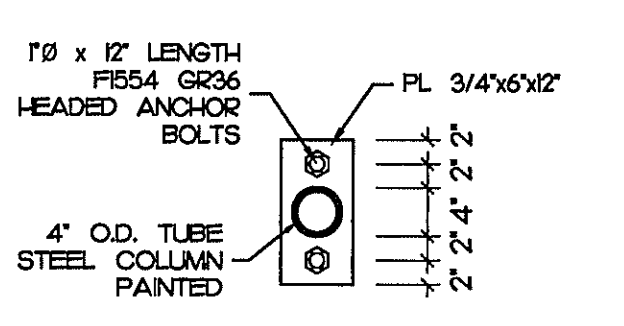
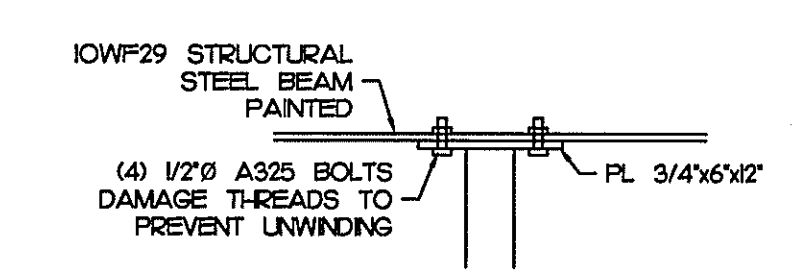
BACK ELEVATION 4
 SCALE: 1/4" = 1'-0" A-5



FRONT ELEVATION 5
 SCALE: 1/4" = 1'-0" A-5

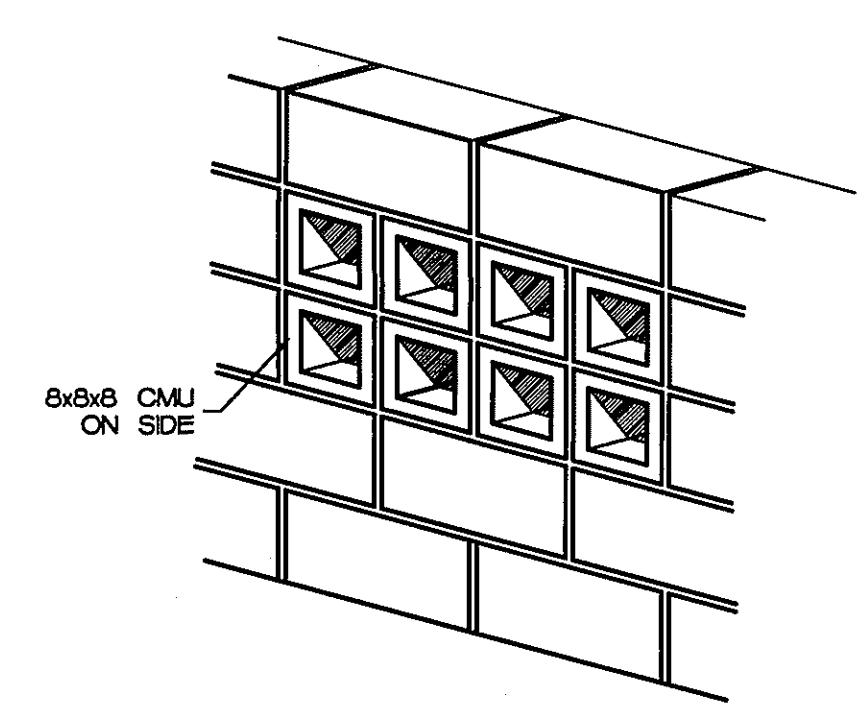


SIDE ELEVATION 6
 SCALE: 1/4" = 1'-0" A-5



DETAIL 7
 SCALE: 3/4" = 1'-0" A-5

NOTE: EXTERIOR FACE OF ALL EXPOSED SPLIT-FACE CMU WALLS SHALL RECEIVE A CLEAR SILICONE WATER REPELLANT COATING (2 COATS)



WALL VENT ISOMETRIC 8
 SCALE: N.T.S. A-5