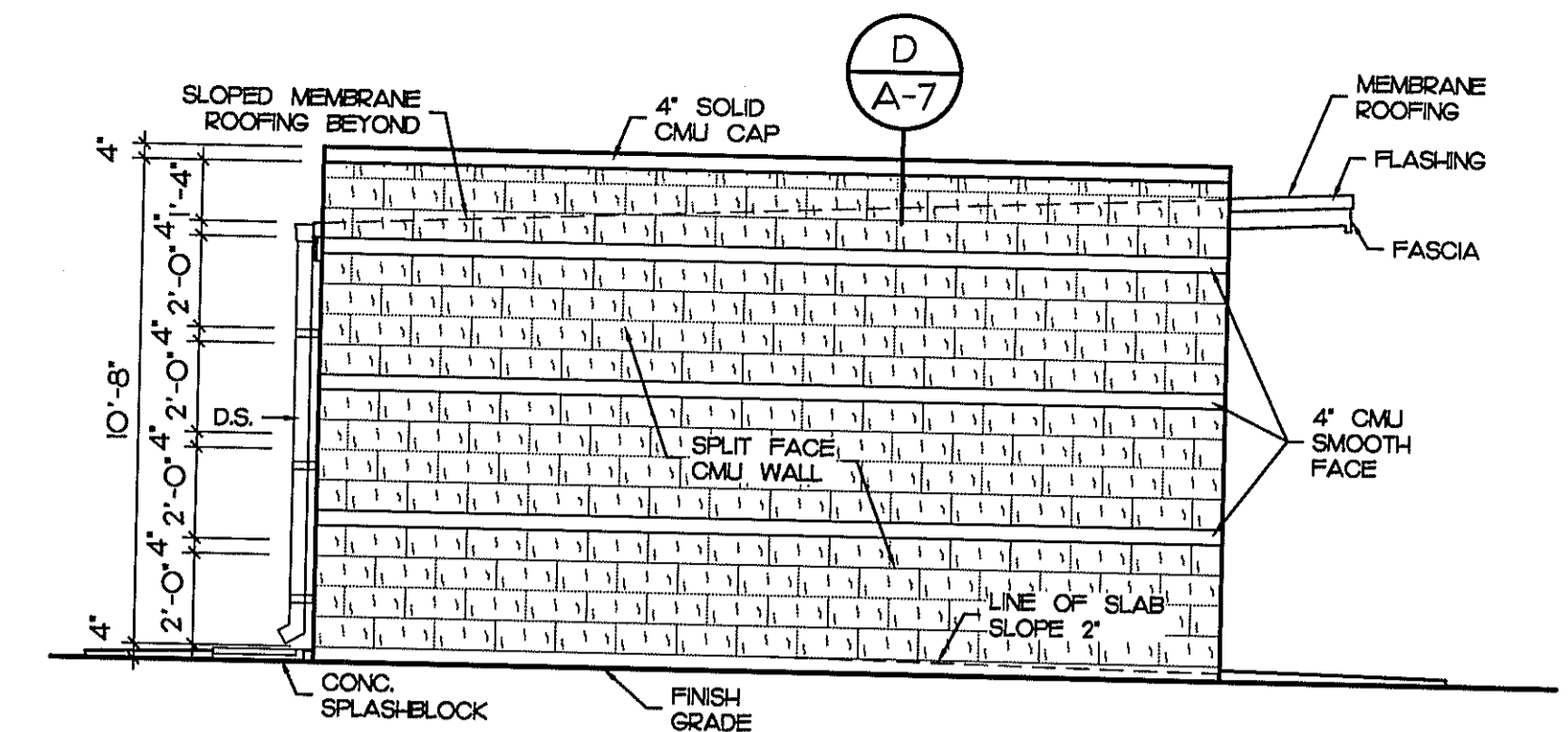
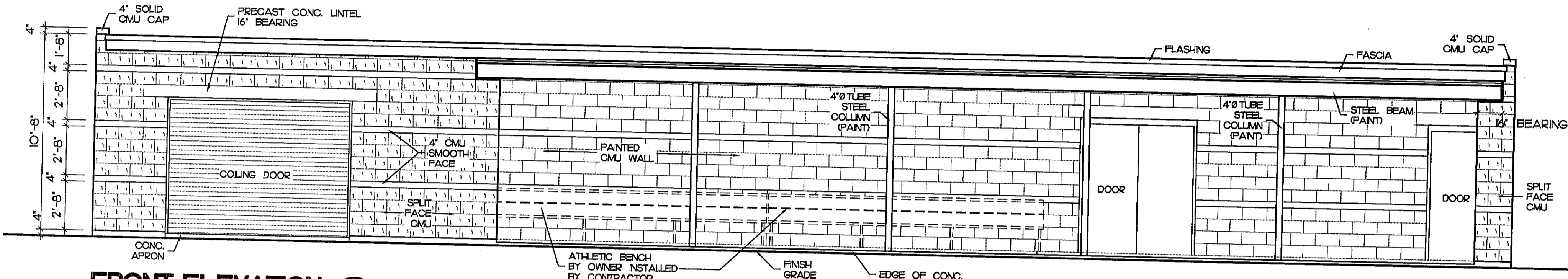


BACK ELEVATION 1
SCALE: 1/4" = 1'-0" (A-8)

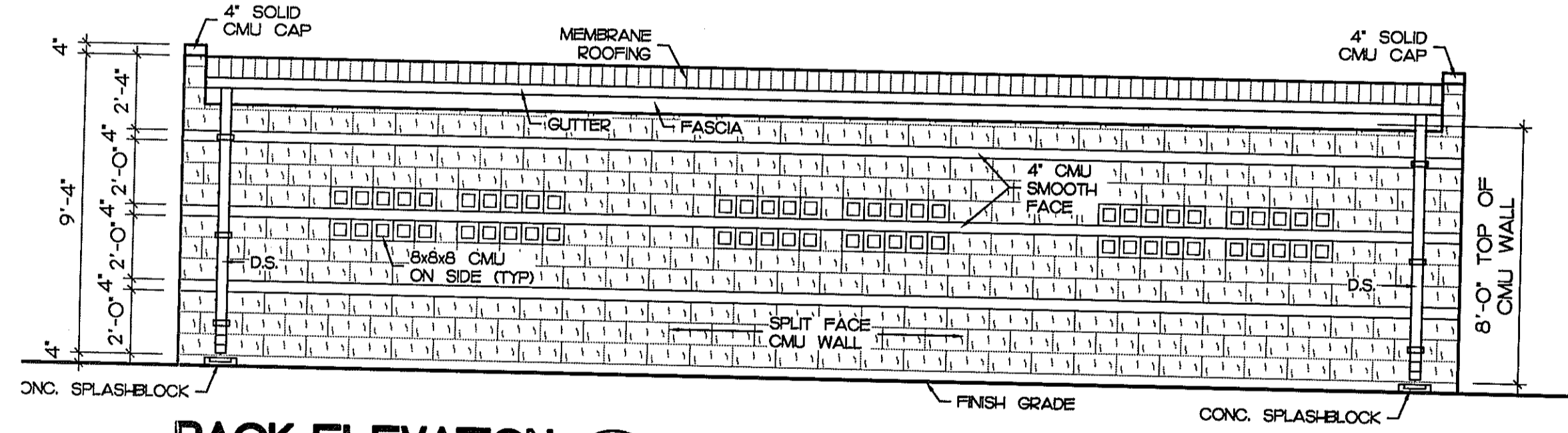


SIDE ELEVATION 2
SCALE: 1/4" = 1'-0" (A-8)

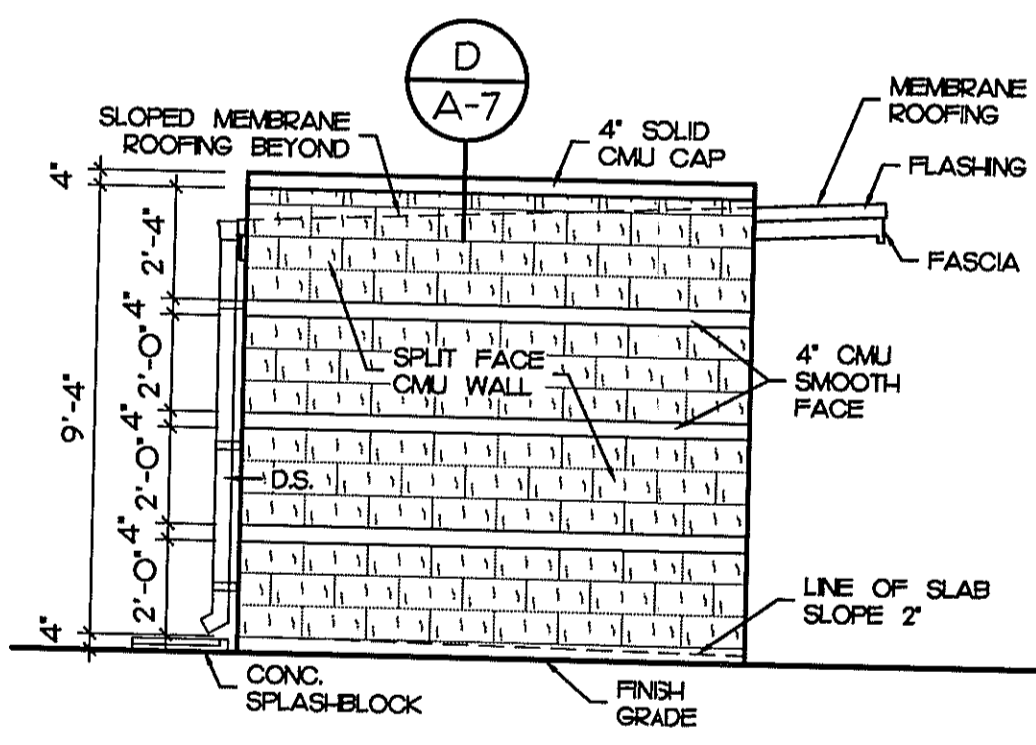


FRONT ELEVATION 3
SCALE: 1/4" = 1'-0" (A-8)

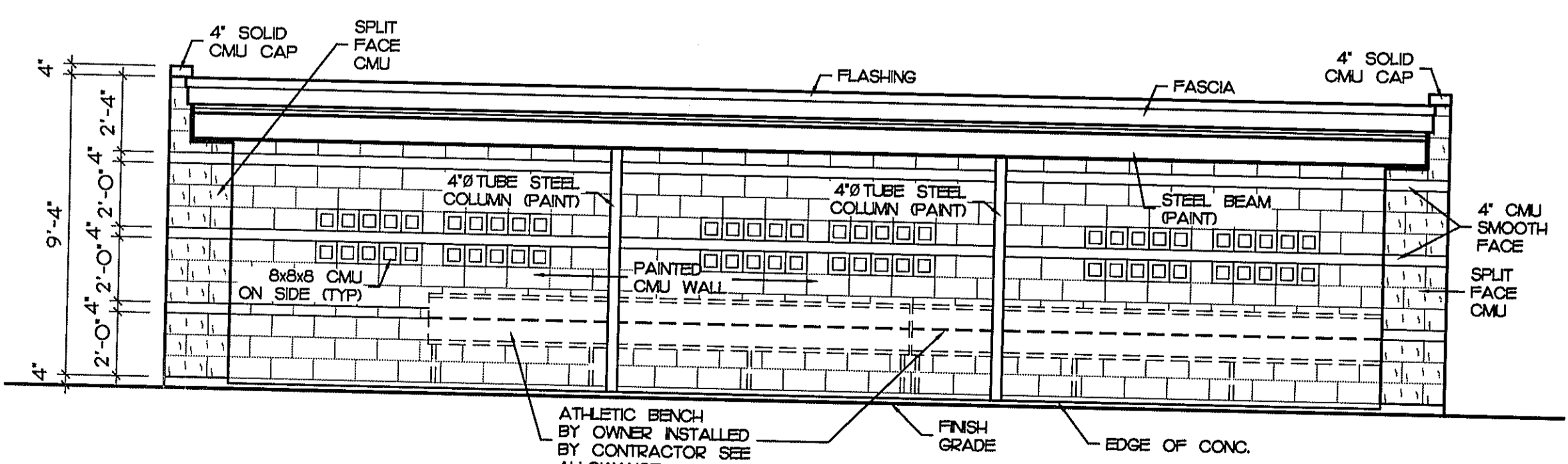
HOME DUGOUT



BACK ELEVATION 4
SCALE: 1/4" = 1'-0" (A-8)



SIDE ELEVATION 6
SCALE: 1/4" = 1'-0" (A-8)



FRONT ELEVATION 5
SCALE: 1/4" = 1'-0" (A-8)

VISITORS DUGOUT

NOTE: EXTERIOR FACE OF ALL EXPOSED SPLIT-FACE CMU WALLS SHALL RECEIVE A CLEAR SILICONE WATER REPELLANT COATING (2 COATS)

REVISION	BY

CRG ARCHITECTS/PALATKA, INC.
216 ST. JOHNS AVE. • PALATKA, FL 32177
407002604 (306) 325 0213 FAX: (306) 326 1601

BID ALTERNATE #1
HOME AND VISITOR
DUGOUT ELEVATIONS

MISCELLANEOUS ATHLETICS PROJECTS
ST JOHNS RIVER COMMUNITY COLLEGE
PALATKA, FLORIDA

Seal/Signature:
ROBERT C. GOODWIN,
ARCHITECT, AR-9044

Date: 10-17-09
Scale: AS NOTED
Drawn: JCK
Job: OEH02
Sheet:

A-8
9 Of 12 Sheets

BID ALTERNATE #1

6/19/2010 4:52:53 PM
PLOTTER: COPYRIGHT © CRG ARCHITECTS