

DRAWING REVISIONS

REVISION	COMMENTS

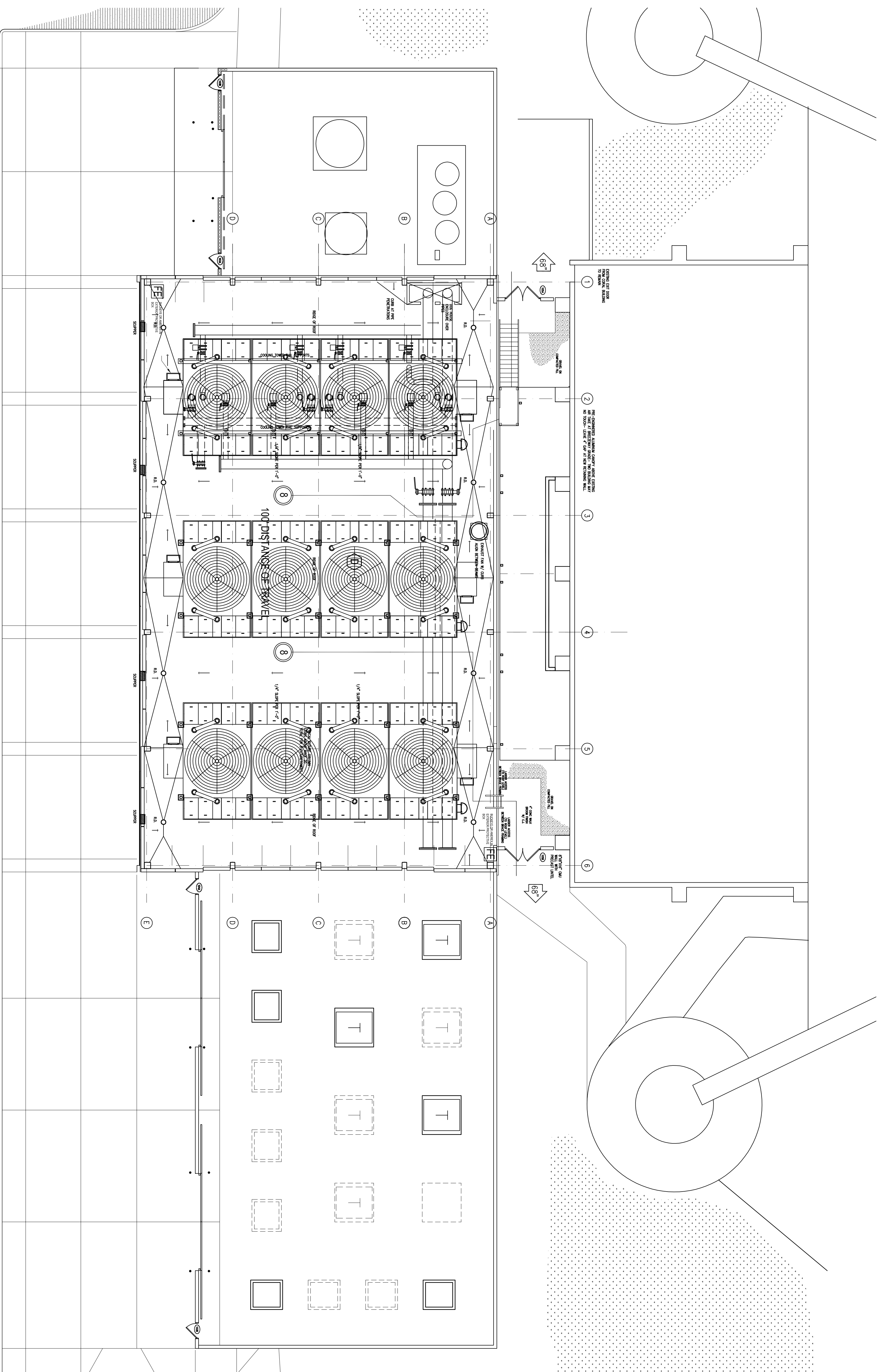
**UNIVERSITY OF SOUTH FLORIDA
 SOUTH EAST CHILLER PLANT
 BR-590 COMPONENT #6**

DRAWING TITLE :
 SOUTHEAST CHILLER PLANT
 LIFE SAFETY PLAN

Drawing Progress: 100% Construction Documents

FILE NAME: 03-51-2009
 DATE: 03-51-2009
 PLOT SIZE: AS NOTED
 CADDED BY: GTW
 DESIGNED BY: GTW
 CHECKED BY: ---

PROJECT NO. 081106
 SHEET NO. LS-2



SYMBOLS

2 HR. FIRE/SMOKE PARTITION	2 HR. FIRE/SMOKE PARTITION
1 HR. FIRE/SMOKE PARTITION	1 HR. FIRE/SMOKE PARTITION
1 HR. FIRE PARTITION	1 HR. FIRE PARTITION
NON-RATED SMOKE TIGHT PARTITION	NON-RATED SMOKE TIGHT PARTITION
48" EXIT / EXIT WIDTH IN INCHES	FIRE ALARM CHIME
SMOKE ZONE	FIRE ALARM MANUAL PULL STATION
EXIT LIGHT / DIRECTION	FIRE ALARM STROBE
FIRE EXTINGUISHER CABINET	SMOKE DETECTOR
FIRE HOSE CABINET & FIRE EXTINGUISHER	HEAT DETECTOR
STAND PIPE	SPRINKLER HEAD

BUILDING DATA

OCCUPANCY: GROUP F3 - MECHANICAL PLANT (FLORIDA BUILDING CODE) (NFPA 101)	BUILDING AREA: GROUND FLOOR 8,395
CONSTRUCTION TYPE II (FLORIDA BUILDING CODE) (NFPA 220)	ELECTRICAL EQUIPMENT YARD 5,200
TYPE	WATER SUPPLY (ES&P) 2,250
SPRINKLERS: UNSPRINKLERED	ROOF TOP (COOLING TOWER) 8,395
NO. OF STORES: 2 STORY	TOTAL 26,410
BUILDING HEIGHT: VARIES - 50 FT	

CODES AND STANDARDS

APPLICABLE CODES:

THE FLORIDA BUILDING CODES 2004 WITH 2005 & 2006 SUPPLEMENTS
 THE FLORIDA EXISTING BUILDING CODE WITH 2006 SUPPLEMENTS
 THE FLORIDA BUILDING CODE TEST PROTOCOLS FOR HIGH VELOCITY HURRICANE ZONES, 2004 WITH 2006 SUPPLEMENTS
 THE FLORIDA BUILDING CODE PLUMBING CODE 2004 WITH 2006 SUPPLEMENTS
 NFPA 1, FIRE PREVENTION CODE, 2004
 NFPA 13, STANDARD FOR THE INSTALLATION OF SPRINKLER SYSTEMS, 2002
 NFPA 30, FLAMMABLE AND COMBUSTIBLE LIQUIDS CODE, 2000
 NFPA 70, NATIONAL ELECTRIC CODE, 2005
 NFPA 72, NATIONAL FIRE ALARM CODE, 2002
 NFPA 80, FIRE DOORS, WINDOWS, 1999
 NFPA 80A, INSTALLATION OF AIR CONDITIONING AND VENTILATION SYSTEMS, 2002
 NFPA 80B, INSTALLATION OF WARM AIR HEATING AND AIR CONDITIONING SYSTEMS, 2002
 NFPA 101, LIFE SAFETY CODE, 2003
 NFPA 110, EMERGENCY AND STANDBY POWER SYSTEMS, 2002
 NFPA 220, TYPES OF BUILDING CONSTRUCTION, 1999
 NFPA 221, FIRE WALLS AND FIRE BARRIER WALL, 2000
 NFPA 241, SAFEGUARDING CONSTRUCTION ALTERATIONS AND DEMOLITION OPERATIONS, 2000
 NFPA 780, LIGHTNING PROTECTION CODE, 2001
 UNDERWRITERS LABORATORIES FIRE RESISTANCE DIRECTORY, LATEST EDITION
 UNDERWRITERS LABORATORIES BUILDING MATERIALS DIRECTORY, LATEST EDITION
 FLORIDA FIRE PREVENTION CODE - 2004

EXIT TABULATION -

SMOKE COMPARTMENT	OCCUPANCY	SQ. FT. / NUMBER INCHES / REQUIRED PROVIDED	OCCUPANTS	EXIT WIDTH
1A	MECHANICAL	300 30 0.3	9	68
1B	MECHANICAL	300 20 0.3	6	68
1C	MECHANICAL	300 8 0.3	252	34
2D	MECHANICAL	300 30 0.3	9	134
TOTALS		26,410	88	26.5 304

2 LIFE SAFETY - ROOF TOP EGRESS PLAN

SCALE: 3/32" = 1'-0"

RBK ARCHITECTS
 2804 N. 36TH STREET TAMPA FL 33605
 TEL: 813.247.5223 FAX: 813.224.9158
 AAC 005000 RBK-ARCH.COM