

REVISION	COMMENTS
▲	12/9/09
▲	
▲	
▲	
▲	

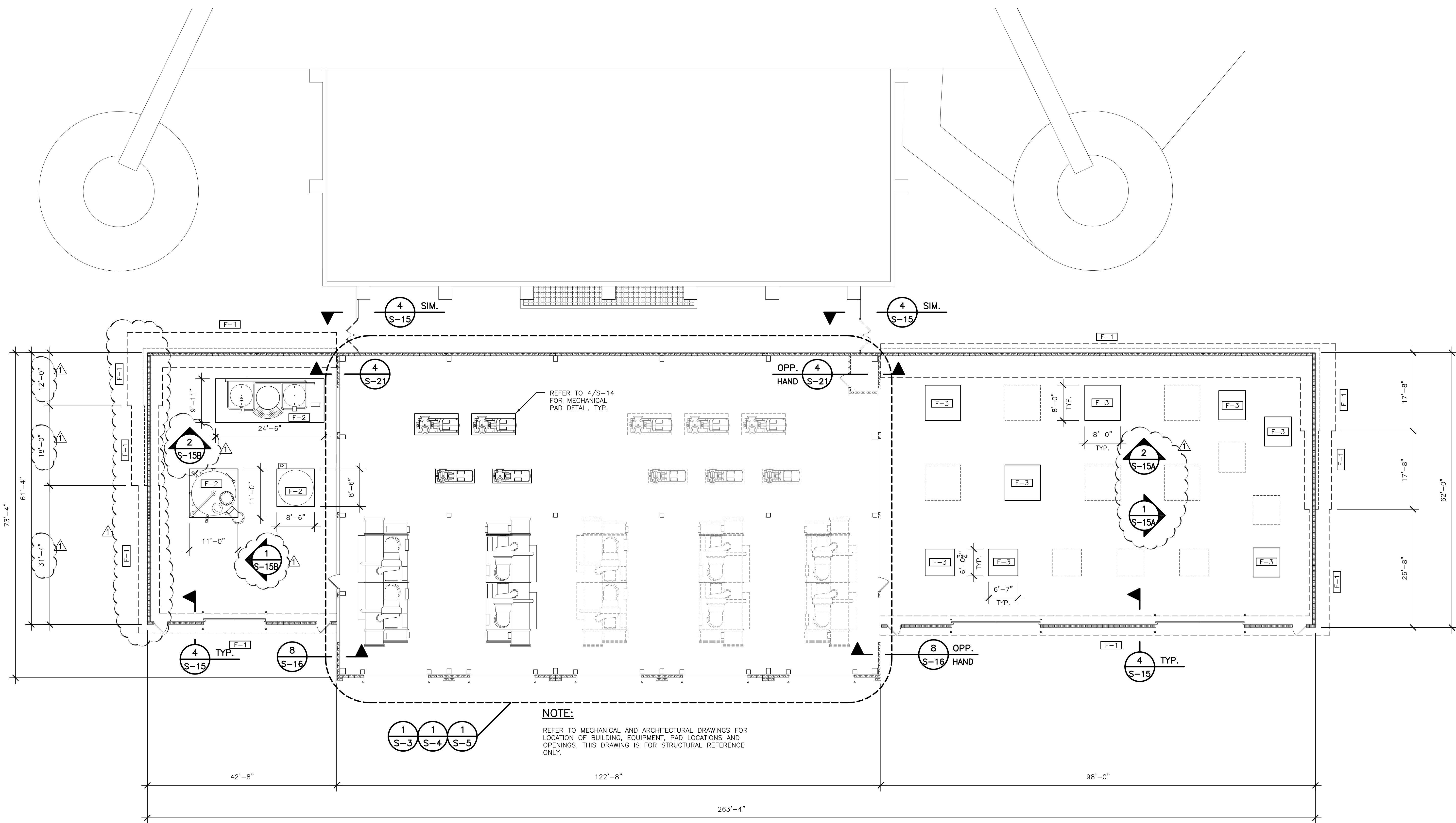
**UNIVERSITY OF SOUTH FLORIDA**  
**SOUTH EAST CHILLER PLANT**  
**BR-590 COMPONENT #6**  
 12225 USF MAPLE DRIVE  
 TAMPA, FLORIDA 33620

DRAWING TITLE :  
**MECHANICAL CHILLER  
 PLANT YARD FOUNDATIONS**  
 Drawing Progress: 100% CD

FILE NAME: S-2  
 DATE: 3-31-2009  
 PLOT SIZE: AS NOTED  
 CADD BY: RC  
 DESIGNED BY: RR, CP, BW  
 CHECKED BY: RR

PROJECT NO.  
 081106  
 SHEET NO.

**S-2**  
 2 OF 20



FOUNDATION SCHEDULE					
MARK	TOP OF FOUNDATION ABOVE FINISHED GRADE	THICKNESS	REINFORCEMENT		COMMENTS
			TOP	BOTTOM	
F-1	-	-	-	-	REFER TO SECTION CUT DETAIL
F-2	+ 0'-6"	1'-6"	#6's @ 8" O.C. EACH WAY	#6's @ 8" O.C. EACH WAY	-
F-3	+ 0'-4"	1'-4"	#6's @ 10" O.C. EACH WAY	#6's @ 10" O.C. EACH WAY	-

**1 MECHANICAL CHILLER PLANT YARD FOUNDATION**  
 S-2 SCALE: 3/32" = 1'-0"

**billerreinhardt**  
 STRUCTURAL GROUP INC.  
 4014 GUNN HIGHWAY SUITE 248, TAMPA, FLORIDA 33618  
 TELEPHONE: 813.908.7203 FAX: 813.908.7303  
 EMAIL: INFO@BILLERREINHART.COM  
 State of Florida Certificate of Authorization No. 9149

REVISION	COMMENTS
1	12/9/09
2	
3	
4	
5	

UNIVERSITY OF SOUTH FLORIDA  
 SOUTH EAST CHILLER PLANT  
 BR-590 COMPONENT #6  
 12225 USF MAPLE DRIVE  
 TAMPA, FLORIDA 33620

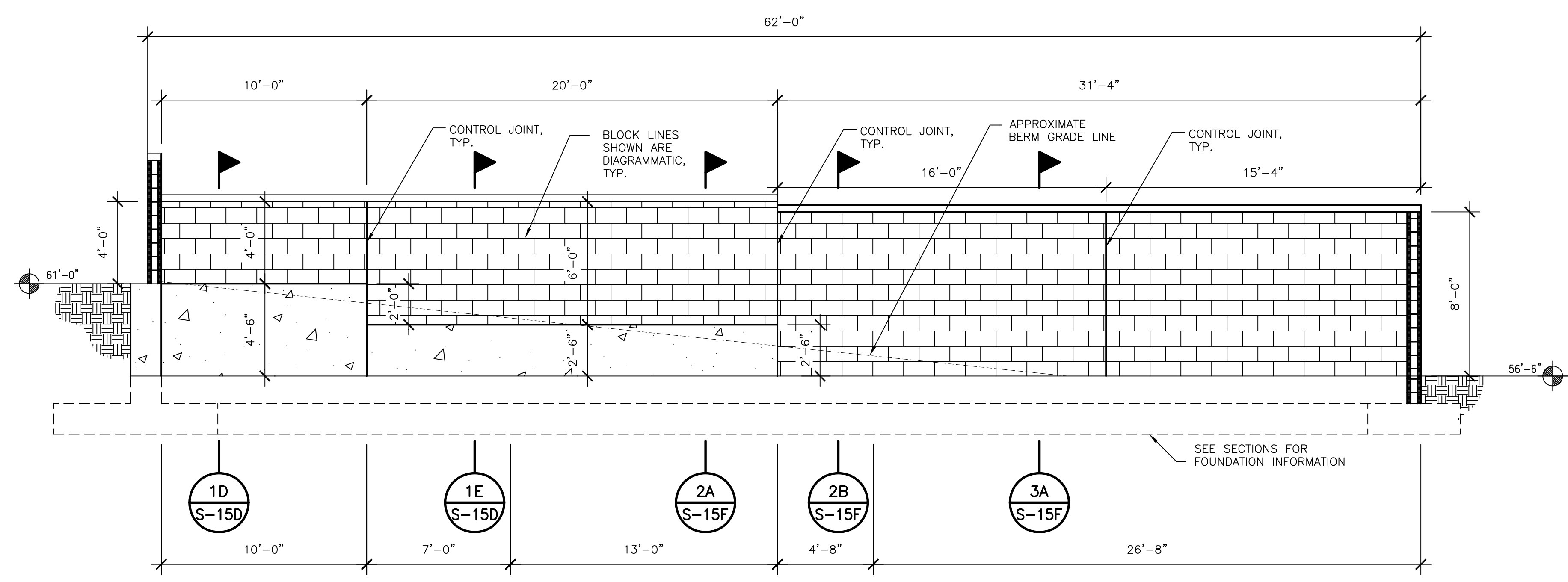
DRAWING TITLE :  
**COOLING TOWER  
 FRAMING DETAIL**  
 Drawing Progress: 100% CD

FILE NAME:	S-3
DATE:	3-31-2009
PLOT SIZE:	AS NOTED
CADDED BY:	RC
DESIGNED BY:	RR, CP, BW
CHECKED BY:	RR

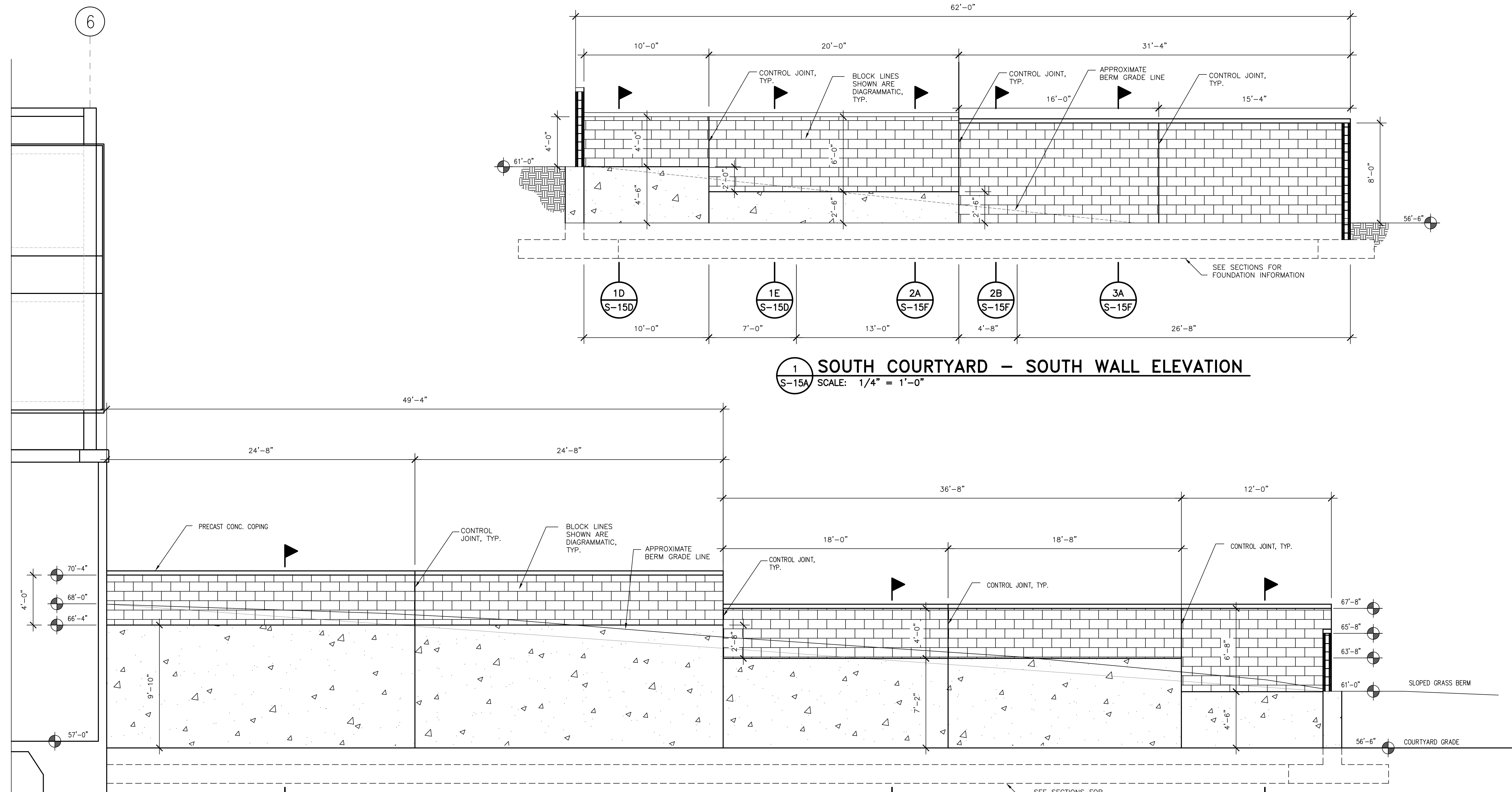
PROJECT NO.  
 081106  
 SHEET NO.

**S-15A**

**billerreinhardt**  
 STRUCTURAL GROUP INC.  
 4014 GUNN HIGHWAY SUITE 248, TAMPA, FLORIDA 33618  
 TELEPHONE : 813.908.7203 FAX : 813.908.7303  
 EMAIL : info@billerreinhardt.com  
 State of Florida Certificate of Authorization No. 9149



**1 SOUTH COURTYARD - SOUTH WALL ELEVATION**  
 S-15A SCALE: 1/4" = 1'-0"



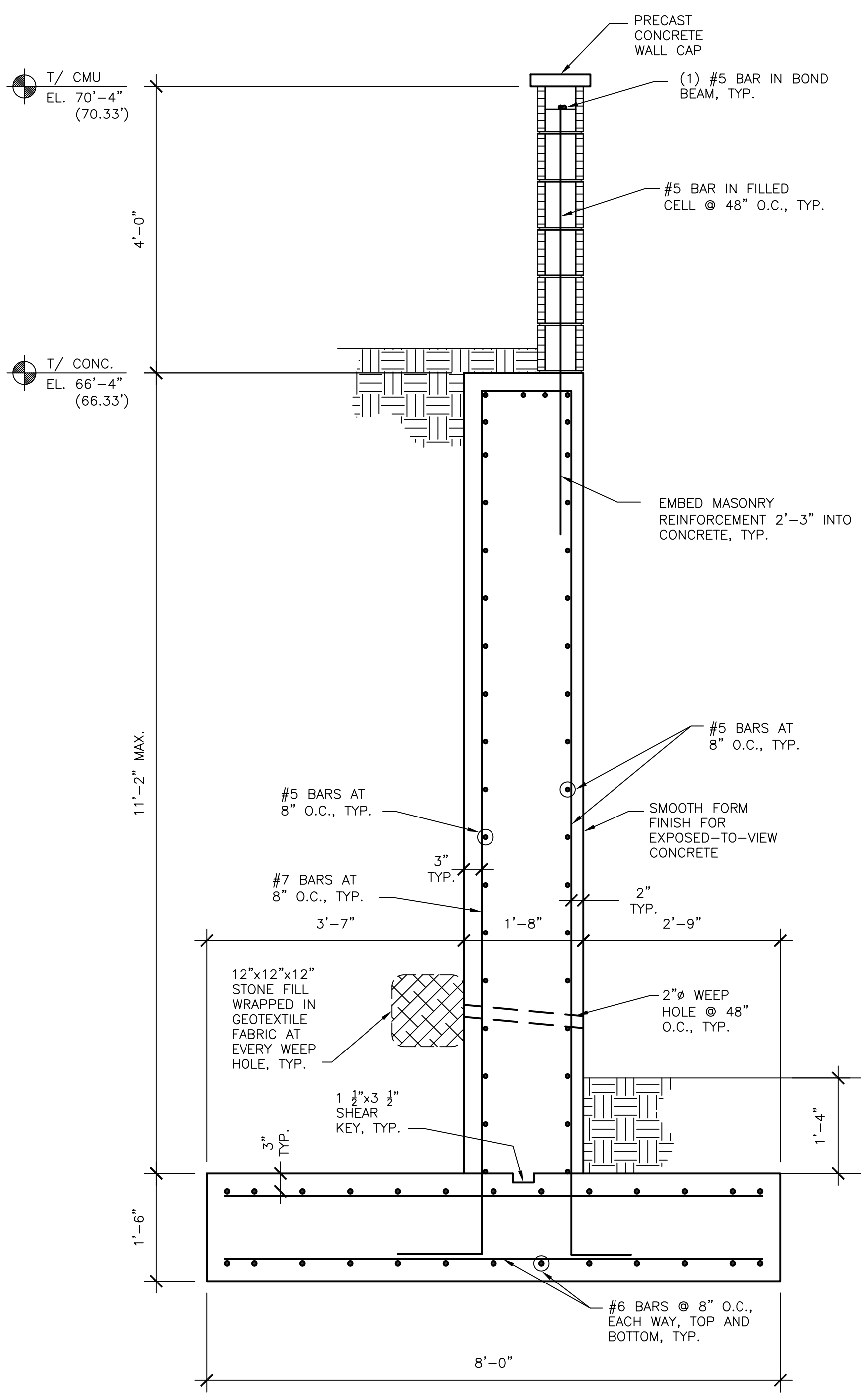
**2 SOUTH COURTYARD - EAST WALL ELEVATION**  
 S-15A SCALE: 1/4" = 1'-0"

6

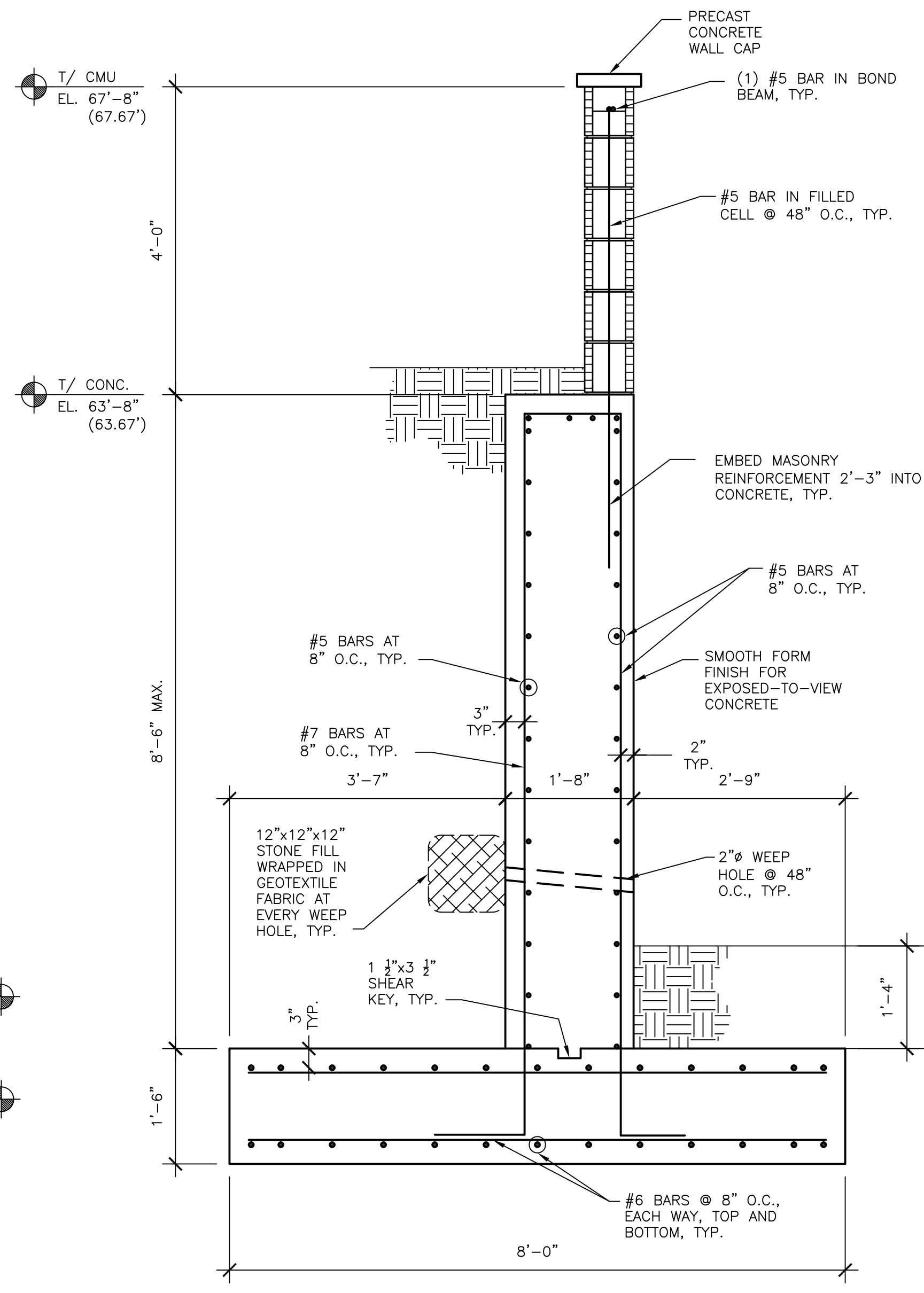


REVISION	COMMENTS
▲	12/9/09
▲	
▲	
▲	
▲	

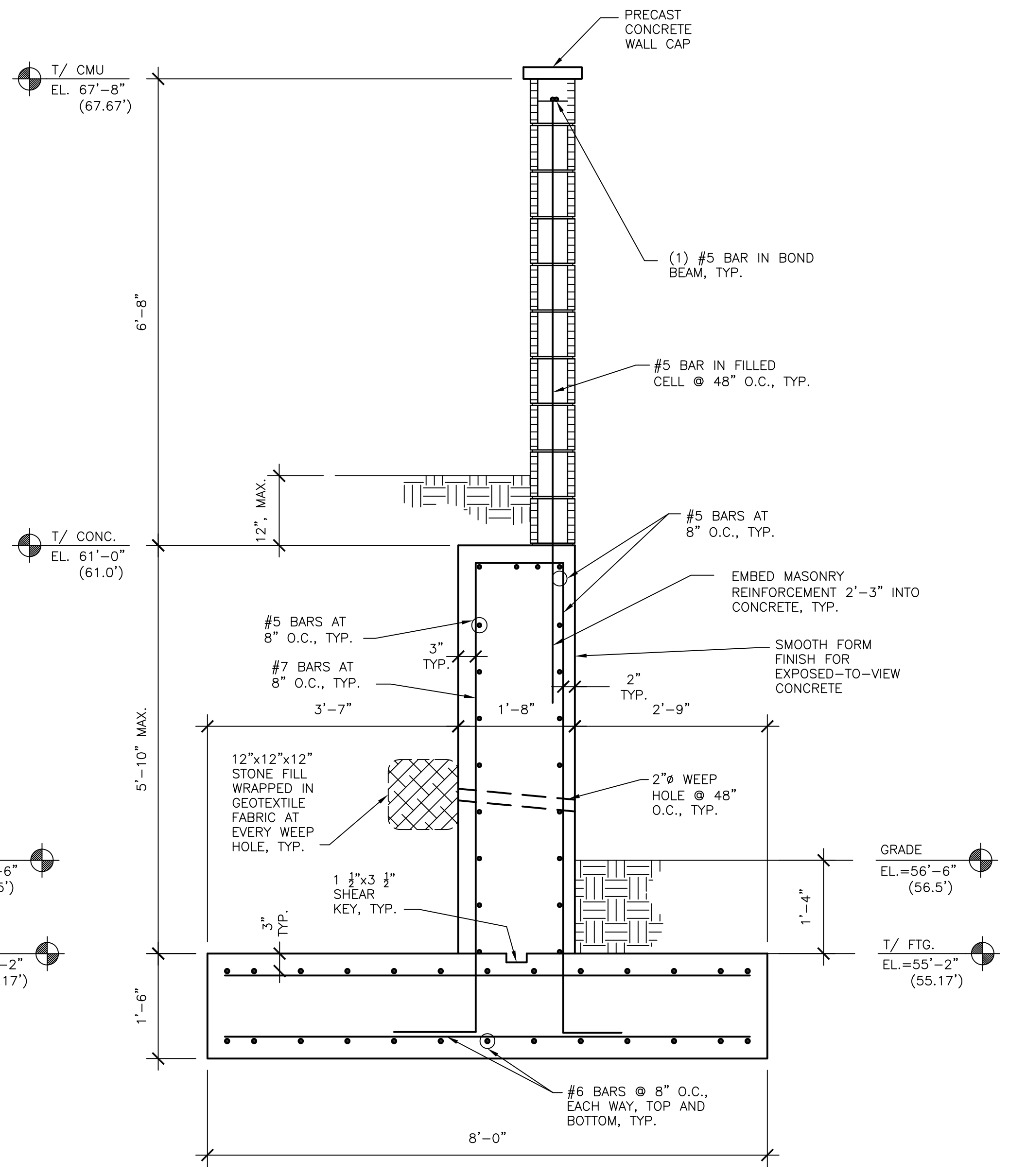
**UNIVERSITY OF SOUTH FLORIDA**  
**SOUTH EAST CHILLER PLANT**  
**BR-590 COMPONENT #6**  
 12225 USF MAPLE DRIVE  
 TAMPA, FLORIDA 33620



**1A SECTION**  
 S-15C SCALE: 3/4" = 1'-0"



**1B SECTION**  
 S-15C SCALE: 3/4" = 1'-0"



**1C SECTION**  
 S-15C SCALE: 3/4" = 1'-0"

**billerreinhardt**  
 STRUCTURAL GROUP INC.  
 4014 GUNN HIGHWAY SUITE 248, TAMPA, FLORIDA 33618  
 TELEPHONE : 813.908.7203 FAX : 813.908.7303  
 EMAIL : info@billerreinhardt.com  
 State of Florida Certificate of Authorization No. 9149

DRAWING TITLE :  
**DETAILS**

FILE NAME :  
 DATE: 3-31-2009  
 PLOT SIZE: AS NOTED  
 CADDED BY: RC  
 DESIGNED BY: RR, CP, BW  
 CHECKED BY: RR

PROJECT NO.  
 081106

SHEET NO.

TO THE BEST OF THE ENGINEER'S KNOWLEDGE  
 THE PLANS AND SPECIFICATIONS COMPLY WITH  
 THE APPLICABLE MINIMUM BUILDING CODES

Signature \_\_\_\_\_ Date \_\_\_\_\_

DRAWING REVISIONS	
REVISION	COMMENTS
▲	12/9/09
▲	
▲	
▲	
▲	

**UNIVERSITY OF SOUTH FLORIDA**  
**SOUTH EAST CHILLER PLANT**  
**BR-590 COMPONENT #6**  
 12225 USF MAPLE DRIVE  
 TAMPA, FLORIDA 33620

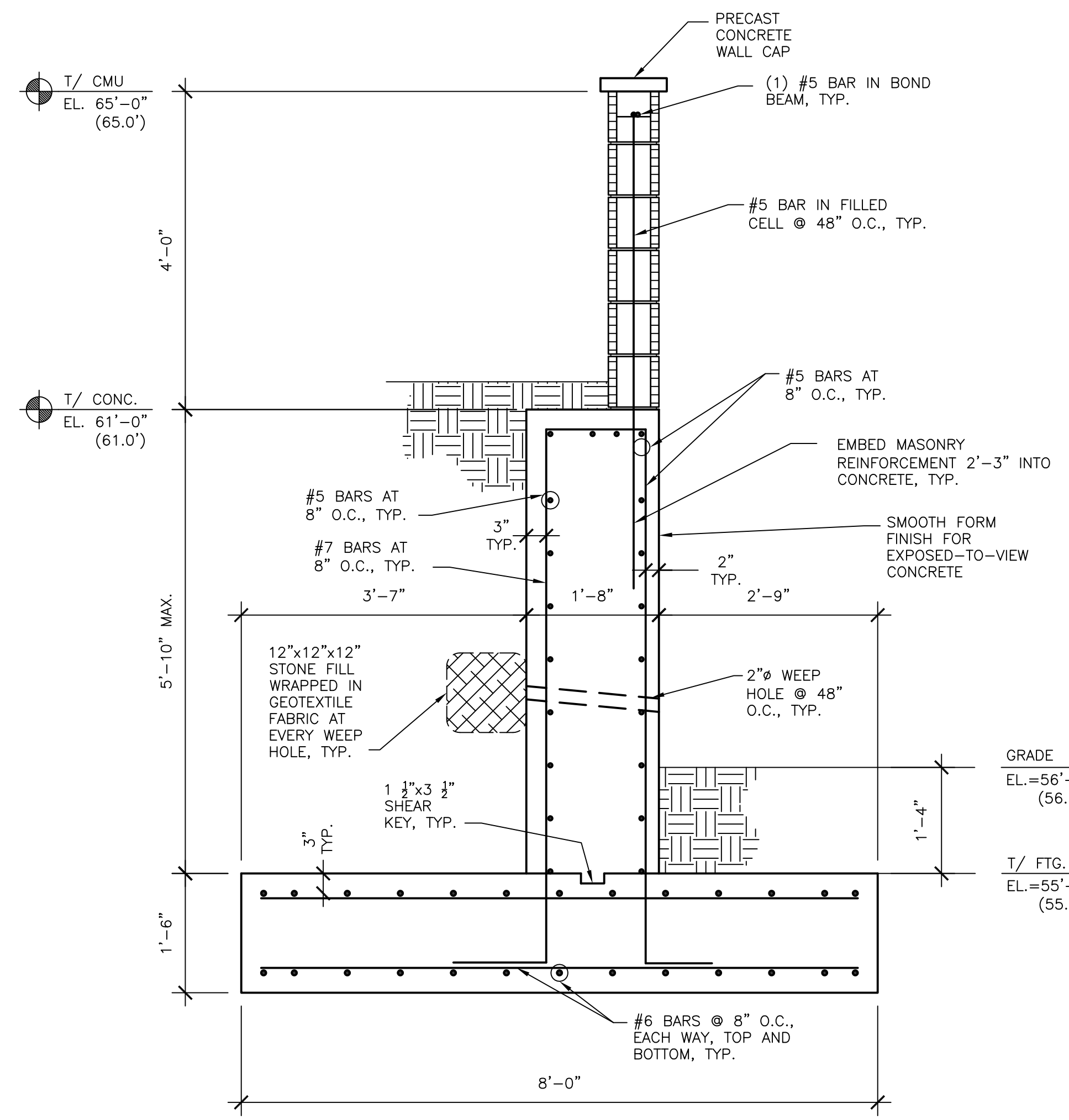
DRAWING TITLE :  
**DETAILS**

FILE NAME:  
 DATE: 3-31-2009  
 PLOT SIZE: AS NOTED  
 CADDED BY: RC  
 DESIGNED BY: RR, CP, BW  
 CHECKED BY: RR

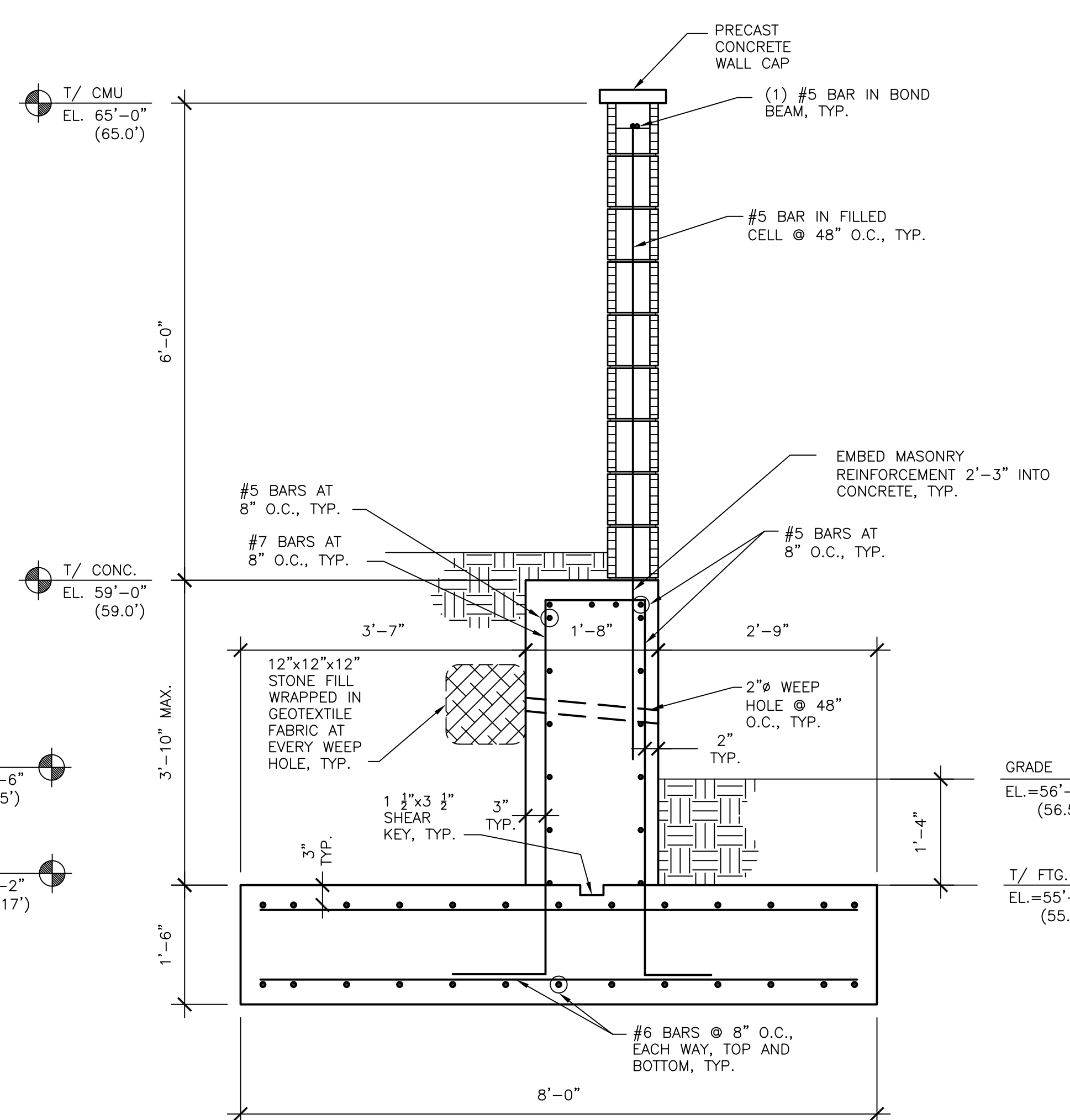
PROJECT NO.  
 081106

SHEET NO.

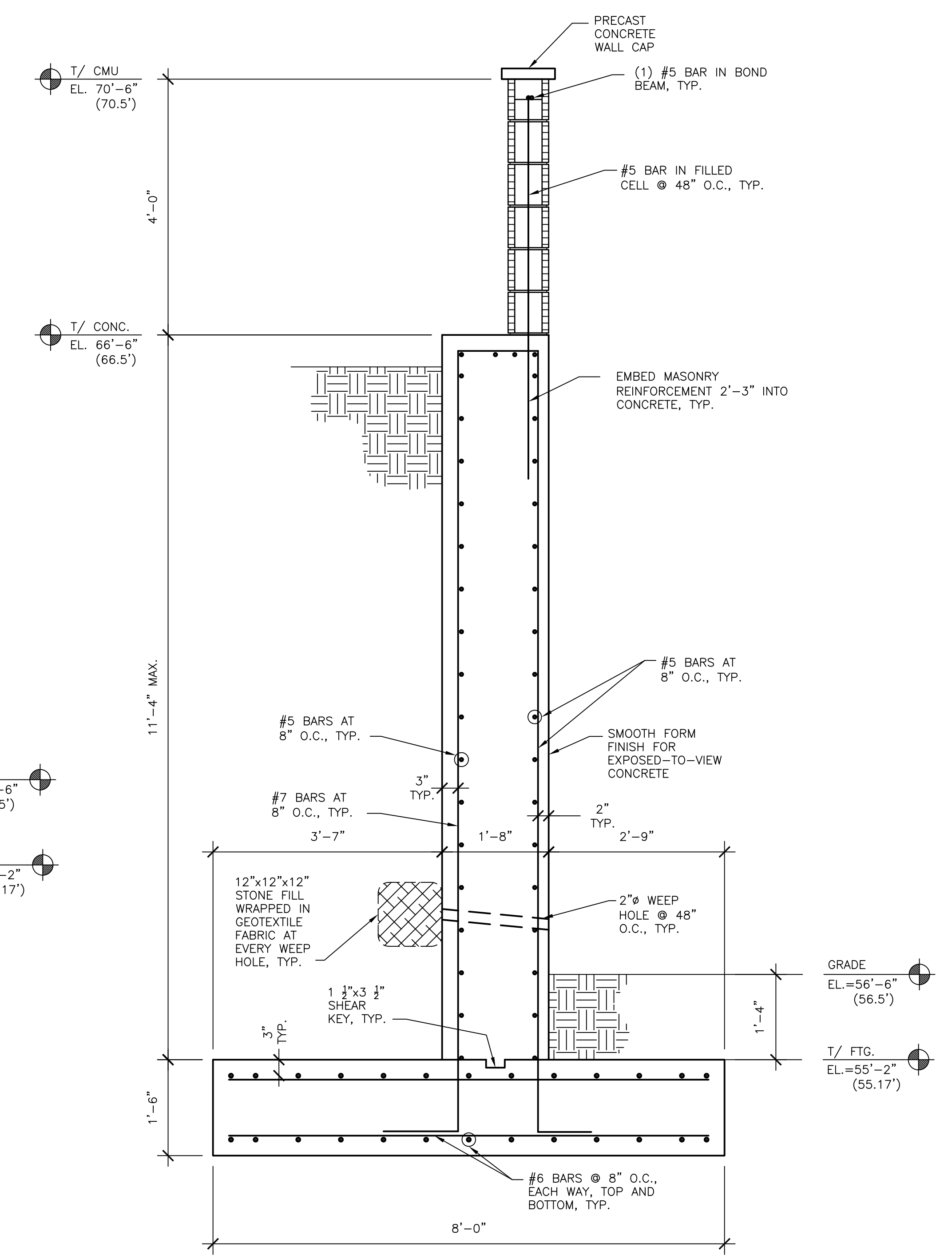
Drawing Progress: 100% CD



**1D SECTION**  
 S-15D SCALE: 3/4" = 1'-0"



**1E SECTION**  
 S-15D SCALE: 3/4" = 1'-0"

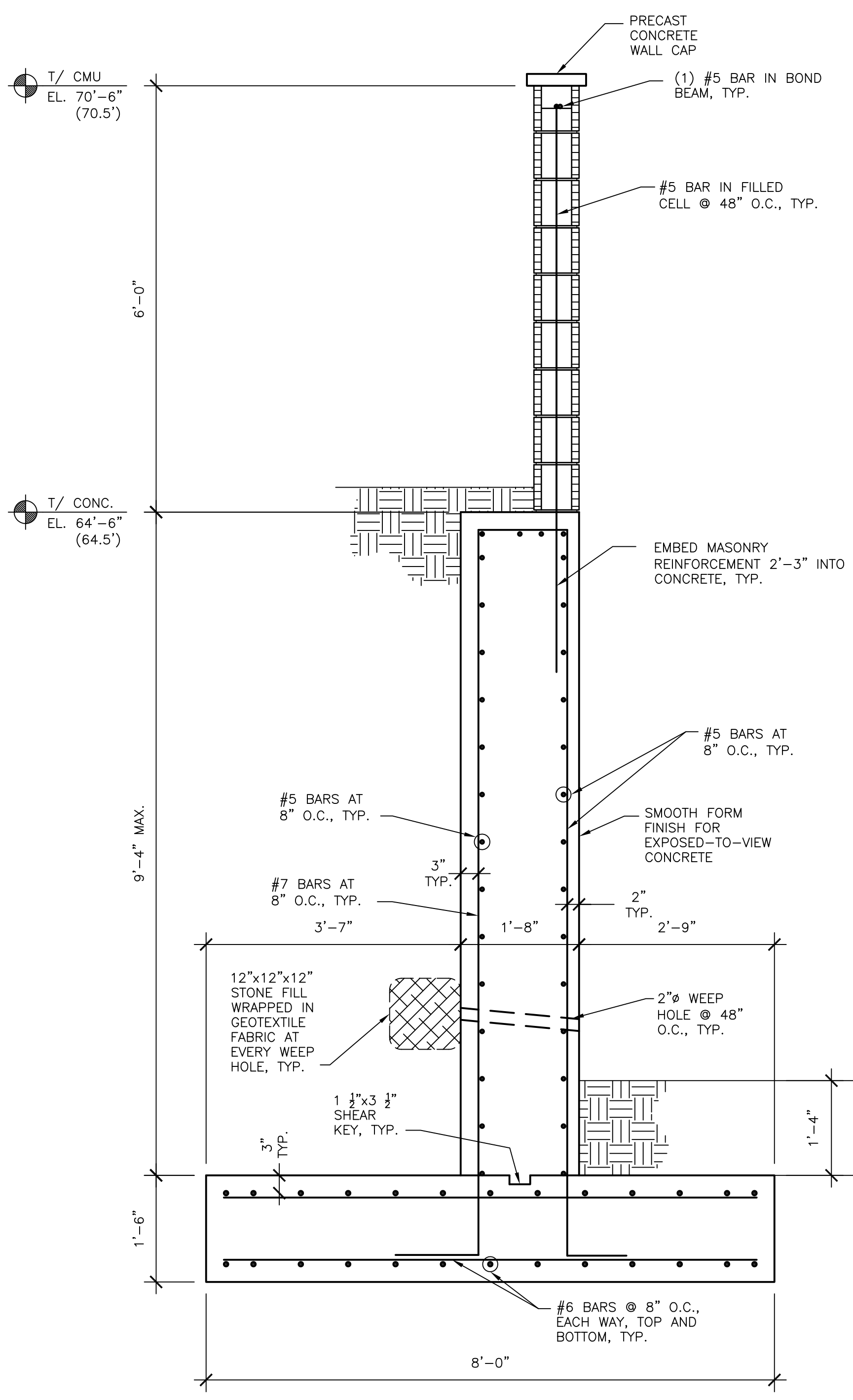


**1F SECTION**  
 S-15D SCALE: 3/4" = 1'-0"

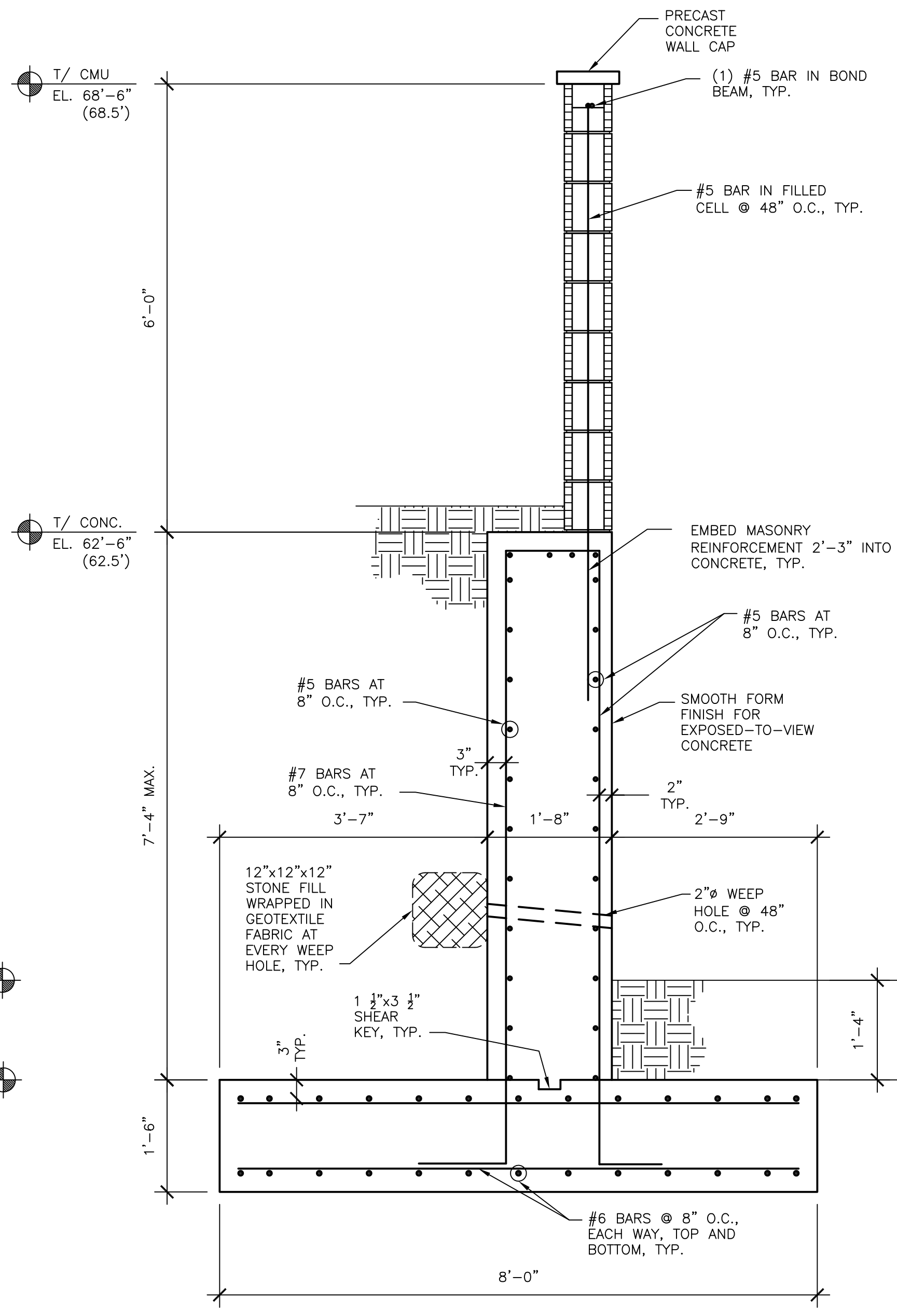
**billerreinhardt**  
 STRUCTURAL GROUP INC.  
 4014 GUNN HIGHWAY SUITE 248, TAMPA, FLORIDA 33618  
 telephone : 813.908.7203 fax : 813.908.7303  
 email : info@billerreinhardt.com  
 State of Florida Certificate of Authorization No. 9149

DRAWING REVISIONS	
REVISION	COMMENTS
▲	12/9/09
▲	
▲	
▲	
▲	

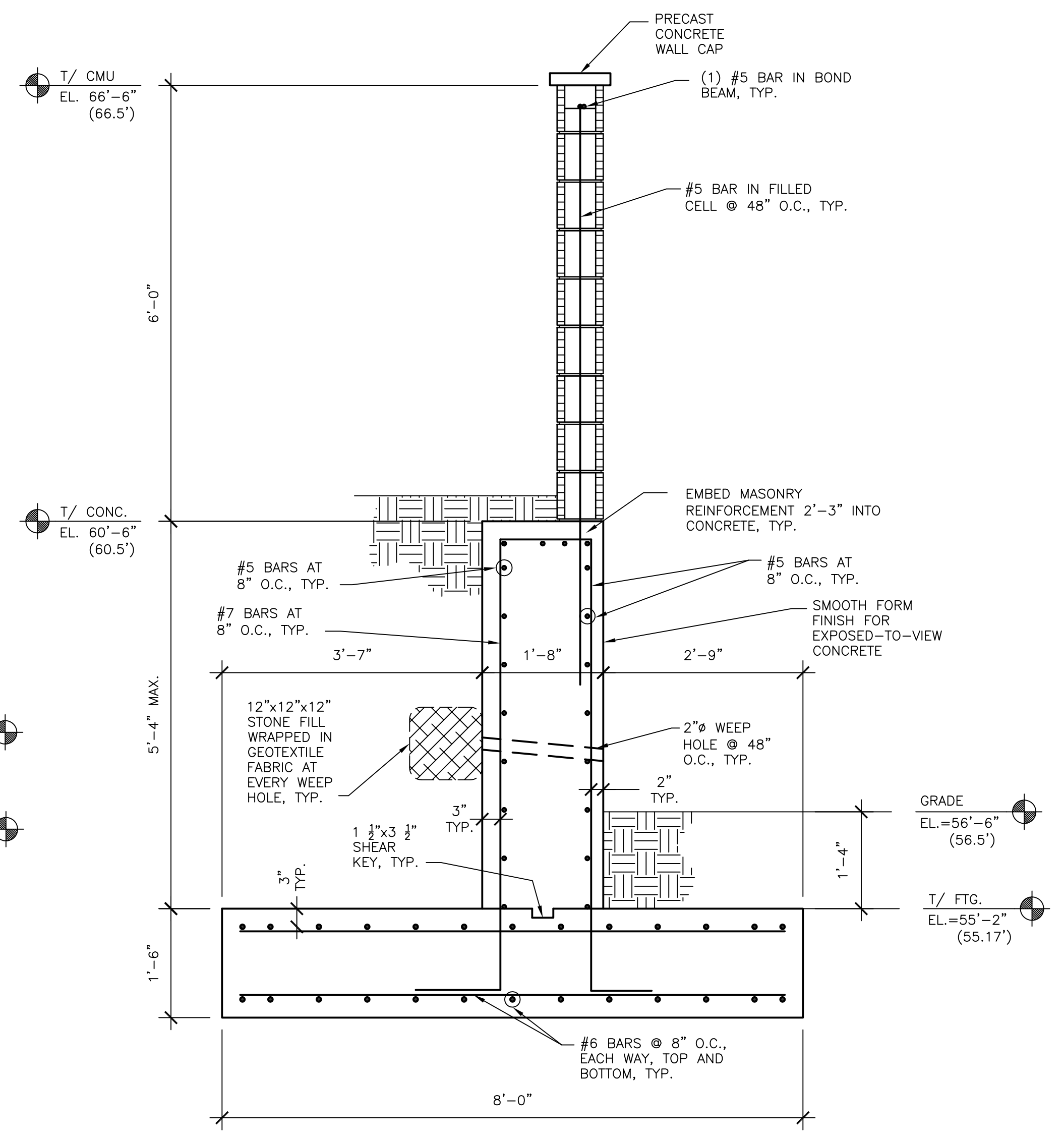
**UNIVERSITY OF SOUTH FLORIDA**  
**SOUTH EAST CHILLER PLANT**  
**BR-590 COMPONENT #6**  
 12225 USF MAPLE DRIVE  
 TAMPA, FLORIDA 33620



**1G SECTION**  
 S-15E SCALE: 3/4" = 1'-0"



**1H SECTION**  
 S-15E SCALE: 3/4" = 1'-0"



**1J SECTION**  
 S-15E SCALE: 3/4" = 1'-0"

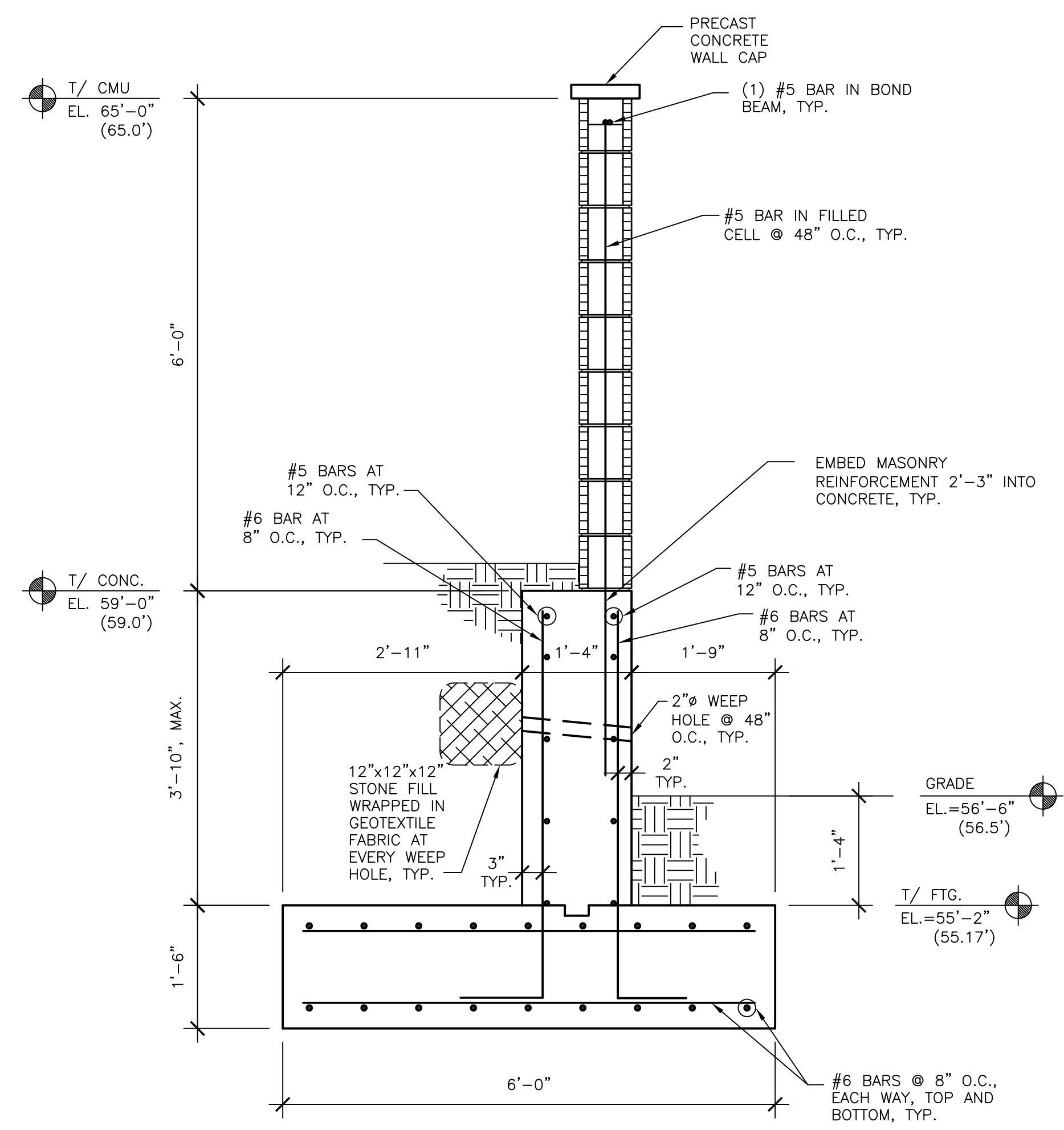
**billerreinhardt**  
 STRUCTURAL GROUP INC.  
 4014 GUNN HIGHWAY SUITE 248, TAMPA, FLORIDA 33618  
 TELEPHONE: 813.908.7203 FAX: 813.908.7303  
 EMAIL: info@billerreinhardt.com  
 State of Florida Certificate of Authorization No. 9149

DRAWING TITLE :  
**DETAILS**  
 FILE NAME:  
 DATE: 3-31-2009  
 PLOT SIZE: AS NOTED  
 CADDED BY: RC  
 DESIGNED BY: RR, CP, BW  
 CHECKED BY: RR  
 PROJECT NO.  
 081106  
 SHEET NO.

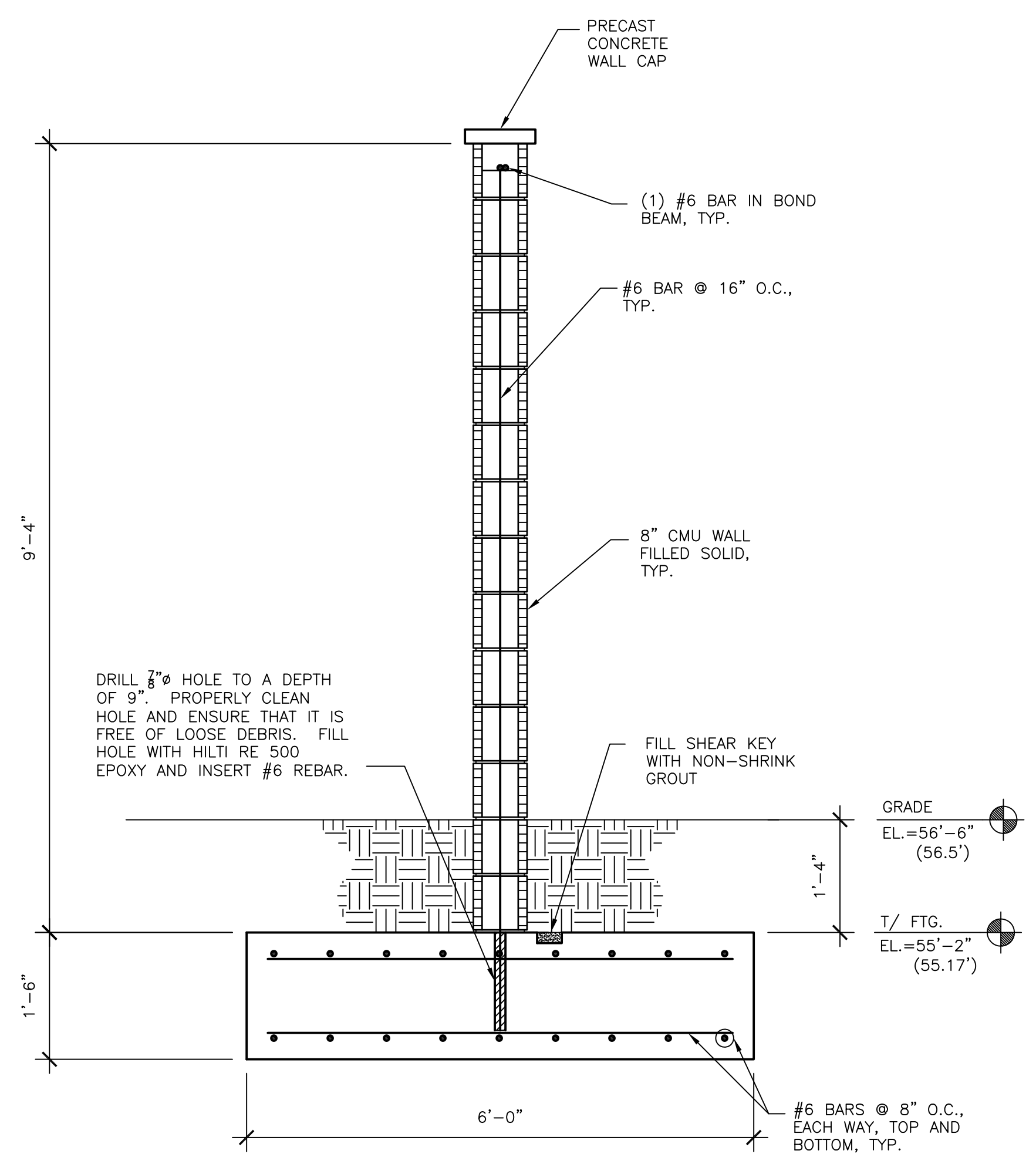
ROBERT J. REINHART  
 FL. P.E. NO. 50076

REVISION	COMMENTS
▲	12/9/09
▲	
▲	
▲	
▲	

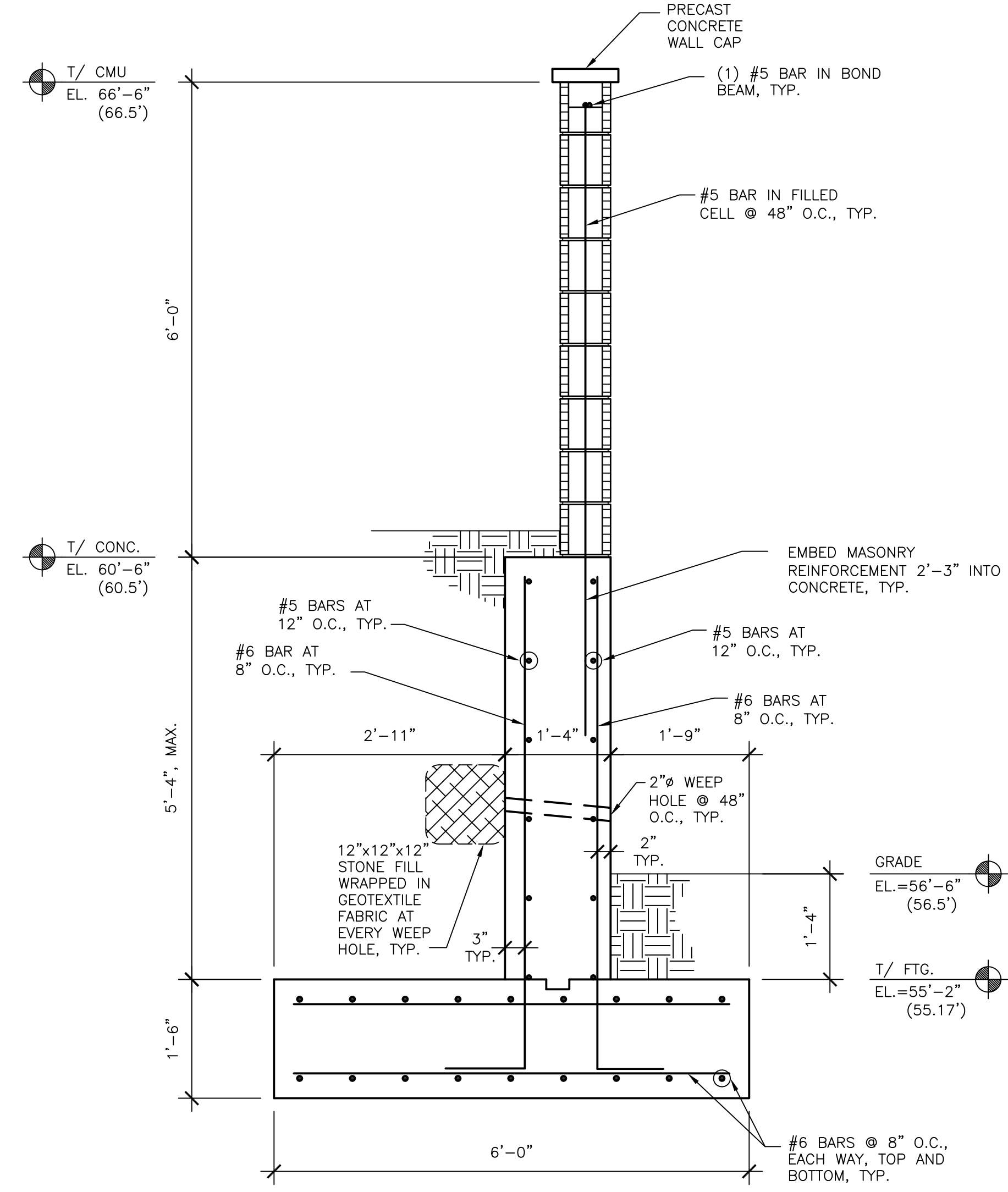
UNIVERSITY OF SOUTH FLORIDA  
 SOUTH EAST CHILLER PLANT  
 BR-590 COMPONENT #6  
 12225 USF MAPLE DRIVE  
 TAMPA, FLORIDA 33620



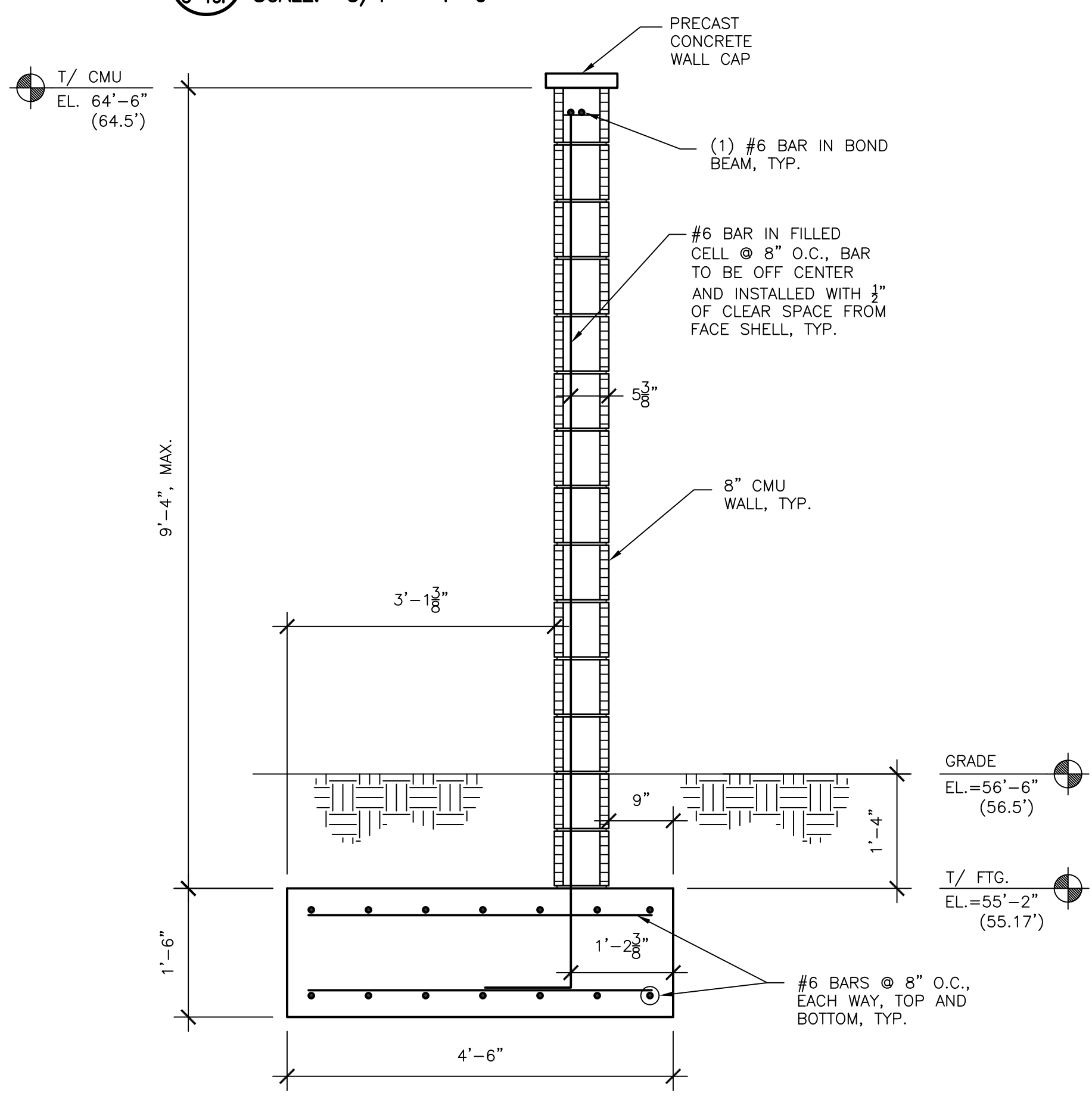
**2A SECTION**  
 S-15F SCALE: 3/4" = 1'-0"



**2B SECTION**  
 S-15F SCALE: 3/4" = 1'-0"



**2C SECTION**  
 S-15F SCALE: 3/4" = 1'-0"



**3A SECTION**  
 S-15F SCALE: 3/4" = 1'-0"

**billerreinhardt**  
 STRUCTURAL GROUP INC.  
 4014 gunn highway suite 248, tampa, florida 33618  
 telephone : 813.908.7203 fax : 813.908.7303  
 email : info@billerreinhardt.com  
 State of Florida Certificate of Authorization No. 9149

DRAWING TITLE :  
**DETAILS**

FILE NAME:  
 DATE: 3-31-2009  
 PLOT SIZE: AS NOTED  
 CADD BY: RC  
 DESIGNED BY: RR, CP, BW  
 CHECKED BY: RR

PROJECT NO.  
 081106

SHEET NO.